

# **PIRMP– Mudgee Wastewater Treatment Plant and Sewerage System**

## POLLUTION INCIDENT RESPONSE MANAGEMENT PLAN (PIRMP)

LICENCE NUMBER: 5230

Approved by: Manager Water and Sewer

Date: 02/05/2025

### PURPOSE:

Mid-Western Regional Council holds an Environment Protection Licence with the NSW Environment Protection Authority (EPA) for Mudgee Wastewater Treatment Plant. As per the Protection of the Environment Operations Act 1997 (the POEO Act), Mid-Western regional Council must prepare, keep, test and implement a pollution incident response management plan (PIRMP) that complies with Part 5.7A of the POEO Act.

If a pollution incident occurs in the course of our activities so that material harm to the environment (within the meaning of section 147 of the POEO Act) is caused or threatened, Mid-Western Regional Council will **immediately** implement this plan as required by Part 5.7A of the POEO Act.

A copy of this plan is kept at the licensed premises and can be made available on request by an authorised EPA officer and to any person who is responsible for implementing this plan.

Parts of the plan is also available on Mid-Western Regional Council website as set out in clause 98D of the Protection of the Environment Operations (General) Regulation 2009.

NOTE: This plan has been developed in accordance with the *Protection of the Environment Operations Act 1997* and the Protection of the Environment Operations (General) Regulation 2009.

### NOTIFICATION OF A POLLUTION INCIDENT

Notification is required if a pollution incident causes or threatens to cause 'material harm to the environment'. Harm to the environment is material as per section 147 of the POEO Act if:

- (i) it involves actual or potential harm to the health or safety of human beings or to ecosystems that is not trivial, **or**
- (ii) it results in actual or potential loss or property damage of an amount, or amounts in aggregate, exceeding \$10,000 (or such other amount as is prescribed by the regulations)

and the loss includes the reasonable costs and expenses that would be incurred in taking all reasonable and practicable measures to prevent, mitigate or make good harm to the environment.

Notification is required even where 'harm to the environment is caused only in the premises where the pollution incident occurs', as specified in section 147(2)

## Environment Protection Licence (EPL) Details

**Name of licensee:** Mid-Western regional Council

**EPL number:** 5230

**Premises name and address:** Mudgee Wastewater treatment Plant, 33 Blain Road Carleon, 2850 NSW

**Website address:** <http://www.midwestern.nsw.gov.au/>

**Scheduled activity/activities on EPL:** Sewage treatment

**Fee-based activity/activities on EPL:** Sewage Treatment processing by small plant

### PIRMP activation

**Position or title:** Water and Sewer Process Coordinator

**Business hours contact number/s:** 1300 765 002

**After hours contact number/s:** 1300 765 002

#### Alternative contact

**Position or title:** Manager Water and Sewer

**Business hours contact number/s:** 1300 765 002

**After hours contact number/s:** 1300 765 002

## Notification of relevant authorities

See below for persons and/or **any relevant authorities requiring to be notified as per Part 5.7A of the POEO Act** in the case of a pollution incident that causes or threatens to cause material harm to the environment.

The following information must be noted and forwarded to the authorities when they are notified of the incident:

- Time and date.
- Nature and location of the incident.
- Duration of the incident (including estimated quantity /volume discharged if applicable)
- Location of areas that may be affected by incident.
- Circumstances in which the incident occurred.
- The proposed action to be taken in dealing with the incident

<b>Fire &amp; Rescue NSW</b>	<b>Contact number/s:</b>	000 Emergency (112 mobile phones) 1300 729 579 (generic) 6372 6772 Mudgee Fire & Rescue
<b>EPA (written report to be provided within 7 days)</b>	<b>Contact number/s:</b>	131 555
<b>NSW Health</b>	<b>Relevant Area Health Service:</b>	Dubbo Office
	<b>Contact number/s:</b>	6809 8979
	After hours	0407 551 548 / 0418 66 397
<b>SafeWork NSW</b>	<b>Contact number/s:</b>	131 050

## Notification of relevant authorities, continued

See below for persons and/or authorities that also **may** need to be notified in the case of a pollution incident that causes or threatens to cause material harm to the environment.

<b>WaterNSW</b>	<b>Contact number/s:</b>	1300 662 077
	Emergency reporting – 24h (spills etc)	1800 061 069
<b>Mid-Western, Regional Council (24h)</b>	<b>Contact number/s:</b>	1300 765 002/(02) 6378 2850
<b>Rural Fire Services - Mudgee</b>	<b>Contact number/s:</b>	6372 4434
<b>NSW Fisheries – Central Tablelands</b>	<b>Contact number/s:</b>	0488 220 443

## Notification of neighbours and the local community

Mid-Western Regional Council will attempt to provide early warning to directly affected premises. Depending on the severity of the incident and the likelihood of impact on the community, a range of communications methods can be deployed during and after an incident. These include:

- Site visits/door knocking
- Phone calls
- SMS messages
- Emails (internal and external)
- Social media, website updates
- Media updates
- Letter drop
- Warning signs
- Depending on the incident; WaterNSW has an early warning system to alert Water Licence Holders. WaterNSW can be contacted and request made for them to send an alert

## Description and likelihood of hazards; Pre-emptive actions to be taken

### Sewage overflow

	Impact	Risk Rating*	Pre-emptive actions
Heavy rainfall	Land/waterway contamination	C 3 = M11	<ul style="list-style-type: none"> <li>• Sewerage system maintenance and rehabilitation to reduce infiltration and inflows</li> <li>• Spare capacity in pump wells</li> <li>• Monitoring and maintenance</li> <li>• SCADA alarm</li> </ul>
Power failure	Land/waterway contamination	B 2 = L5	<ul style="list-style-type: none"> <li>• Lightning protection</li> <li>• Backup generators at some SPS</li> <li>• Vegetation management to prevent damage to infrastructure in case of storm</li> <li>• Portable pumps</li> </ul>

			<ul style="list-style-type: none"> <li>SCADA alarms</li> </ul>
	Impact	Risk Rating*	Pre-emptive actions
Blockage or damage to sewers	Land/waterway contamination	C 2 = M8	<ul style="list-style-type: none"> <li>Sewerage system maintenance</li> <li>Sewer Jetting program (high pressure cleaning of mains for repeat chokes)</li> <li>Spare capacity in pump wells</li> <li>Monitoring and maintenance</li> </ul>
SCADA/Communication failure	Land/waterway contamination	A 2 = L4	<ul style="list-style-type: none"> <li>SCADA testing and alarming</li> <li>Monitoring of SCADA signal issues</li> </ul>
External person hitting sewers when excavating	Land/waterway contamination	C 2 = M8	<ul style="list-style-type: none"> <li>Provide approximate location of underground service to external persons</li> <li>Telemetry designed to pick up a change in inflows (for example excessive pumping hours)</li> <li>Vacuum trucks (for clean-up)</li> <li>Portable pumps (for clean-up)</li> <li>Review of design plans by Council</li> </ul>
Infrastructure failure (general)	Land/waterway contamination	C 3 = M11	<ul style="list-style-type: none"> <li>Maintenance and renewal programs</li> <li>Smoke testing program and asset condition assessment aimed at reducing stormwater infiltration</li> <li>Sewer relining program</li> </ul>
Infrastructure failure such as: 1. Failure of Putta Bucca Rising Main 2. Failure at Mudgee STP site 3. Sewer Pump Station failure	Land/waterway contamination	C 3 = M11	<ul style="list-style-type: none"> <li>Condition assessment of rising main between Putta Bucca and Mudgee STP</li> <li>Document "Contingencies - Mudgee STP, Putta Bucca Rising Main and SPS" has details for setting up a temporary pump station at STP, list of critical stock items and their location as well as Epump/generator setup details for sewer pump station</li> </ul>

Mechanical breakdown/dual pump failure	Land/waterway contamination	B 2 = L5	<ul style="list-style-type: none"> <li>Telemetry monitoring</li> <li>Maintenance and inspection programs</li> </ul>
	Impact	Risk Rating*	Pre-emptive actions
			<ul style="list-style-type: none"> <li>Spare capacity in pump wells</li> <li>vacuum truck</li> <li>Monitoring and maintenance</li> </ul>
Excessive flow at STP	Land/waterway contamination	B 2 = L5	<ul style="list-style-type: none"> <li>Sewerage system maintenance and rehabilitation to reduce infiltration and inflows</li> <li>Spare capacity in pump wells</li> <li>Monitoring and maintenance</li> <li>Overflow/storm dam at STP</li> <li>SCADA alarm</li> </ul>

### Chemical Spills

	Impact	Risk Rating*	Pre-emptive actions
Chemical spill due to Tank/storage failure	Land contamination, possibly enter a waterway	B 2 = L5	<ul style="list-style-type: none"> <li>Bunding</li> <li>Inspection and maintenance of tanks</li> </ul>
Chemical spill during delivery	Land contamination, possibly enter a waterway	B 2 = L5	<ul style="list-style-type: none"> <li>PPE</li> <li>Spill kit at STP and in fuel trucks</li> <li>Bund</li> </ul>
Chemical spill due to damage to chemical system	Land/waterway contamination	C 1 = L2	<ul style="list-style-type: none"> <li>Bund</li> <li>Alarms</li> <li>Shut off valves</li> </ul>
Chemical spill due to vandalism	Land/waterway contamination	B 2 = L5	<ul style="list-style-type: none"> <li>Security fences</li> </ul>
Chemical spill due to Bund failure	Land/waterway contamination	B 2 = L5	<ul style="list-style-type: none"> <li>Bund inspections</li> <li>Maintenance and renewal</li> </ul>
Chemical truck incident outside of banded area	Land/waterway contamination	C 2 = M8	<ul style="list-style-type: none"> <li>Only use transport companies with evidence of driver licensing and training</li> </ul>

			<ul style="list-style-type: none"> <li>Operator always on-site during deliveries. Chain of Responsibility (CoR) – supervision of connection</li> </ul>
Storage of chemicals	Toxic effect on human, flammability, Land/waterway contamination	C 2 = M8	<ul style="list-style-type: none"> <li>Spill kit and bund</li> <li>SDS</li> </ul>

### Fire (bushfire, fire at landfill)

	Impact	Risk Rating*	Pre-emptive actions
Fire destroying pump station	Land/waterway contamination	C 3 = M11	<ul style="list-style-type: none"> <li>Vegetation management</li> <li>Fire extinguishers</li> <li>Fire alarm</li> <li>SCADA monitoring</li> </ul>
Fire destroying part of or all of STP infrastructure	Land/waterway contamination	B 4 = M12	<ul style="list-style-type: none"> <li>Vegetation management</li> <li>Fire extinguishers</li> <li>Fire alarms</li> <li>SCADA Monitoring</li> </ul>
Fire at Landfill – no access to STP	Land/waterway contamination	B 3 = M9	<ul style="list-style-type: none"> <li>SCADA monitoring and operation</li> </ul>
* MWRC Risk Matrix WHS302 used to evaluate risk rating (see Appendix A)			

### Inventory of pollutants

**Provide an inventory of potential pollutants on the premises or used in carrying out the activity to which the licence relates:**

Identify the maximum quantity of any pollutant/s likely to be stored or held at particular locations (including underground tanks) at or on the premises to which the licence relates.

Example

Location/Tank	Max. quantity	Contents	Comments
---------------	---------------	----------	----------



Workshop	30 L	Diesel
Workshop	60 L	Unleaded Petrol
Workshop	5 L	2 stroke oil
Workshop	300 L	Oil (Shell, Valvoline, Castrol)
Workshop	20 L	Glyphosate (Roundup)
Workshop	8 L	Weed'n'Feed
Workshop	40 L	Disinfectant – All Pro Premium Lemon X (2% W/V quaternary Ammonium Compound)
Workshop	100 kg	Sodium Hydrogen Carbonate (soda ash)
Workshop	350 kg	Hydrated Lime
Workshop	250 kg	Renderoc HB70
Aluminium Sulphate Tank	20,000 L	Aluminium Sulphate
Near UV system	1250 kg	Zetag 8147 (polyacrylamide and adipic acid)
Scrubber stack		Carbon granules
Pump stations	Fuel in generators only	

## Safety equipment

Safety Equipment/Process	Location
Alarms via SCADA when issues with processes	Can be remotely monitored
Internal sampling and testing	Mudgee STP laboratory
External Sampling and testing	Contracted to ALS Mudgee
Safety Data Sheet (SDS)	in Chemwatch plus hard copy on site
Gas meter (confined space)	In W&S Process Coordinator office (Depot Road Mudgee)
PPE including gloves and safety glasses	at STP and in trucks
Life jacket, safety buoy, hand railing, harness	at various locations as appropriate
Fire extinguishers and fire hoses	at STP and SPS
Safety Showers and eye wash stations	at STP
Emergency Evacuation Plan	at STP
Emergency alert/evacuation warning system	at STP
Bund to contain chemical spills	at STP Workshop and chemical tanks
Spill containment kits (including sandbags, silt trap)	At Depot shed and stores as appropriate
Witches hats, star pickets and tape to isolate spill area	
Backup generator/ E pump	Pump Stations: Putta Bucca, Racecourse, Mudgee East and Industrial

## Communicating with neighbours and the local community

Mid-Western Regional Council will attempt to provide early warning to directly affected premises. Depending on the severity of the incident and the likelihood of impact on the community, a range of communications methods can be deployed during and after an incident. These include:

- Site visits/door knocking
- Phone calls
- SMS messages
- Emails (external and internal)
- Social media, website updates
- Media alerts
- Letter drop
- Warning signs
- Depending on the incident; WaterNSW has an early warning system to alert Water Licence Holders. WaterNSW can be contacted and request made for them to send an alert

Depending on the nature of the incident, MWRC will liaise with NSW Health and DPIE to ensure best advice is given to the community. The advice will be given to the community either by phone call, email, SMS messages if individuals are directly affected; or by media alerts and social media post for advice to the general community. Community will be regularly updated by the same mediums as the situation evolves.

Depending on the incidents, specific warning signs may be erected near incident sites or near affected area.

## Minimising harm to persons on the premises

The following are in place to minimise the risk of harm to any persons who are on the premises or who are present where the scheduled activity is being carried out:

- Operators are trained and qualified to undertake the work
- Operators in training are actively supervised by qualified operators
- Contractors have completed MWRC induction and site induction/ risk assessment
- Visitors are to sign in and out and visitors are accompanied by MWRC staff
- PPE are supplied and kept in good condition
- Gas meter are available to operators

## Maps

Maps are presented in Appendix B and includes:

- location of the premises to which the licence relates
- surrounding area likely to be affected by a pollution incident
- location of potential pollutants on the premises
- Stormwater drainage site plan

## Actions to be taken during or immediately after a pollution incident

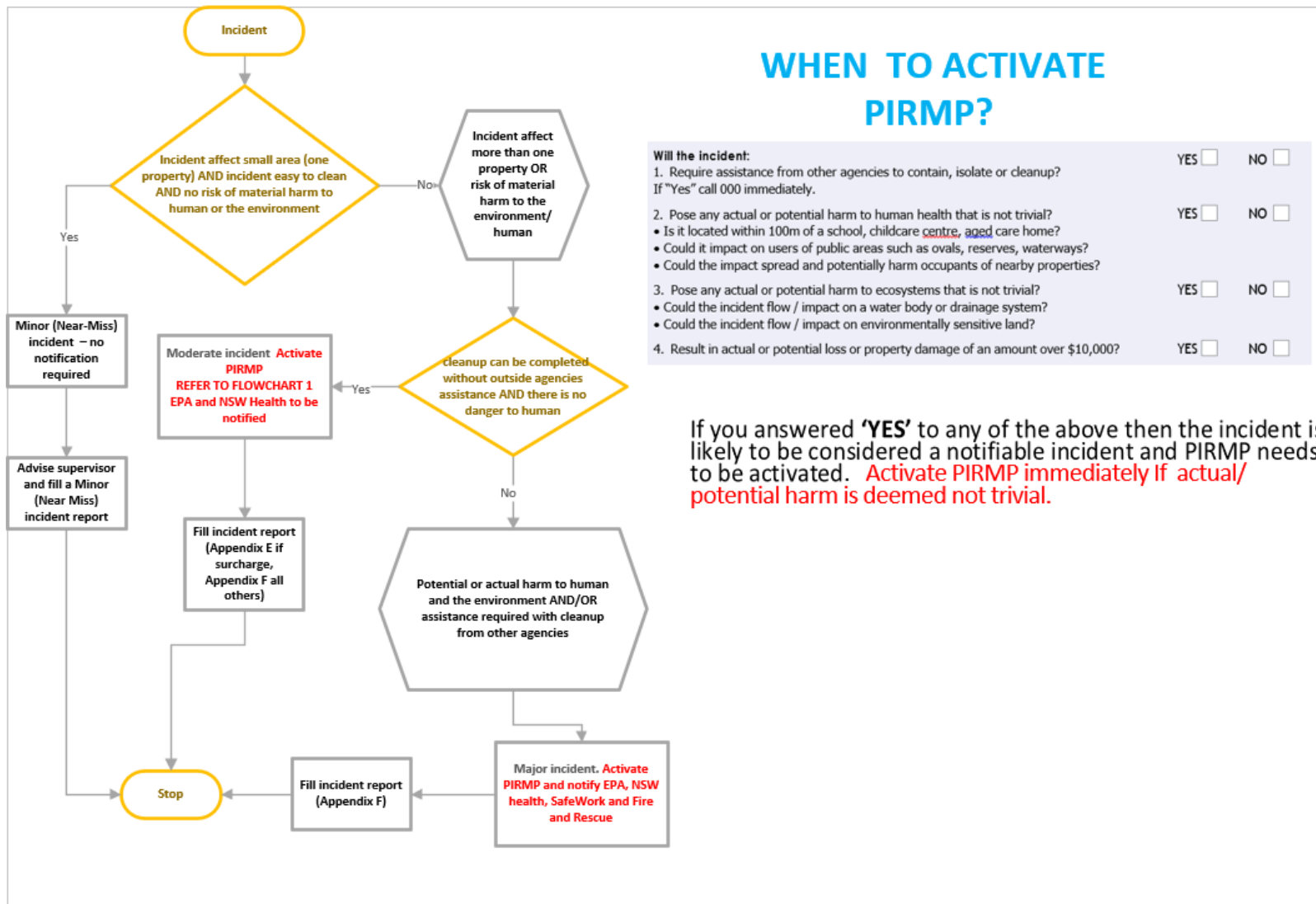


Figure 1: Incident classification flowchart

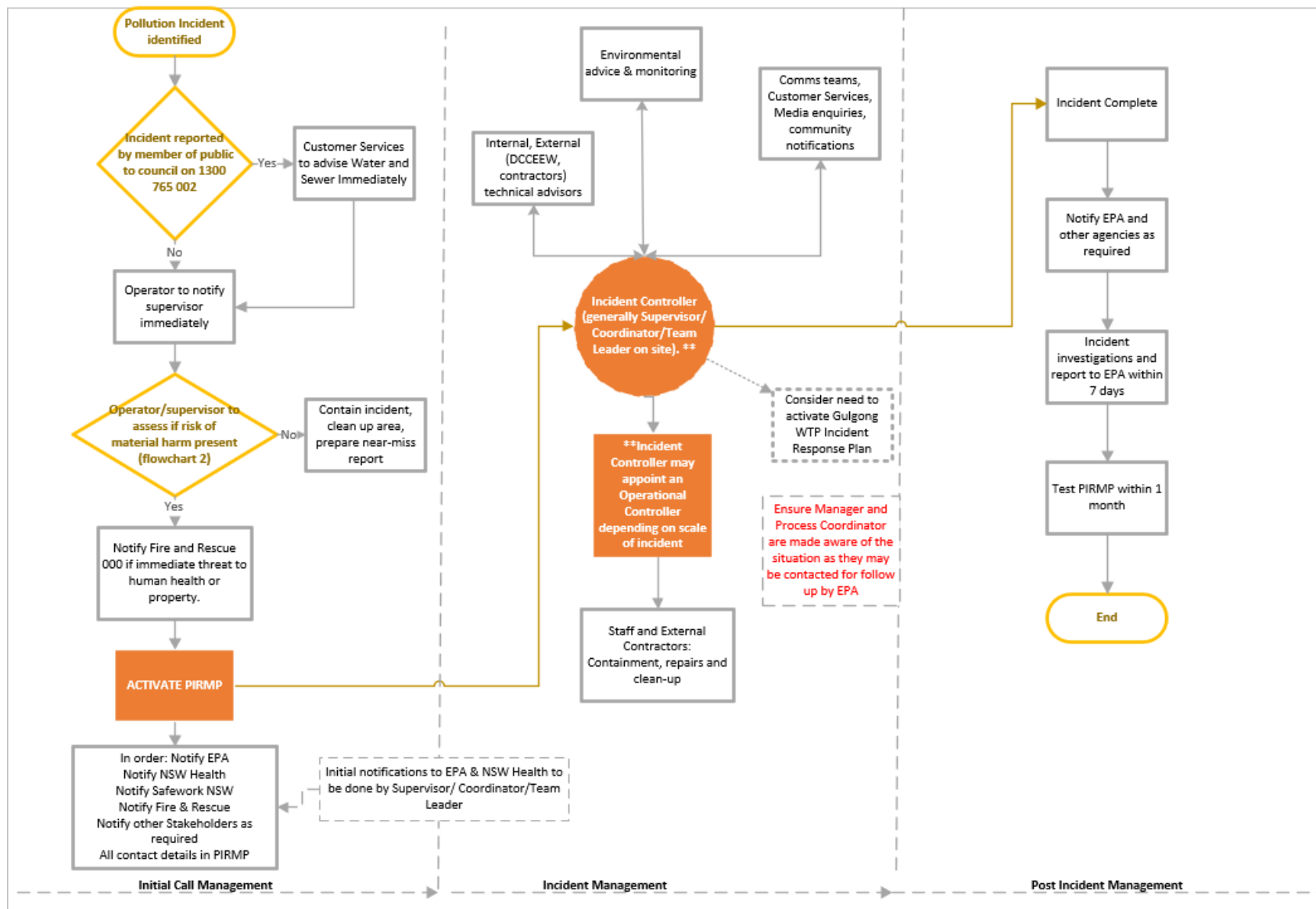


Figure 2: Pollution Incident Response Flowchart

## SURCHARGE IN A PARK. Refer to Appendix G for Lawson Park maps

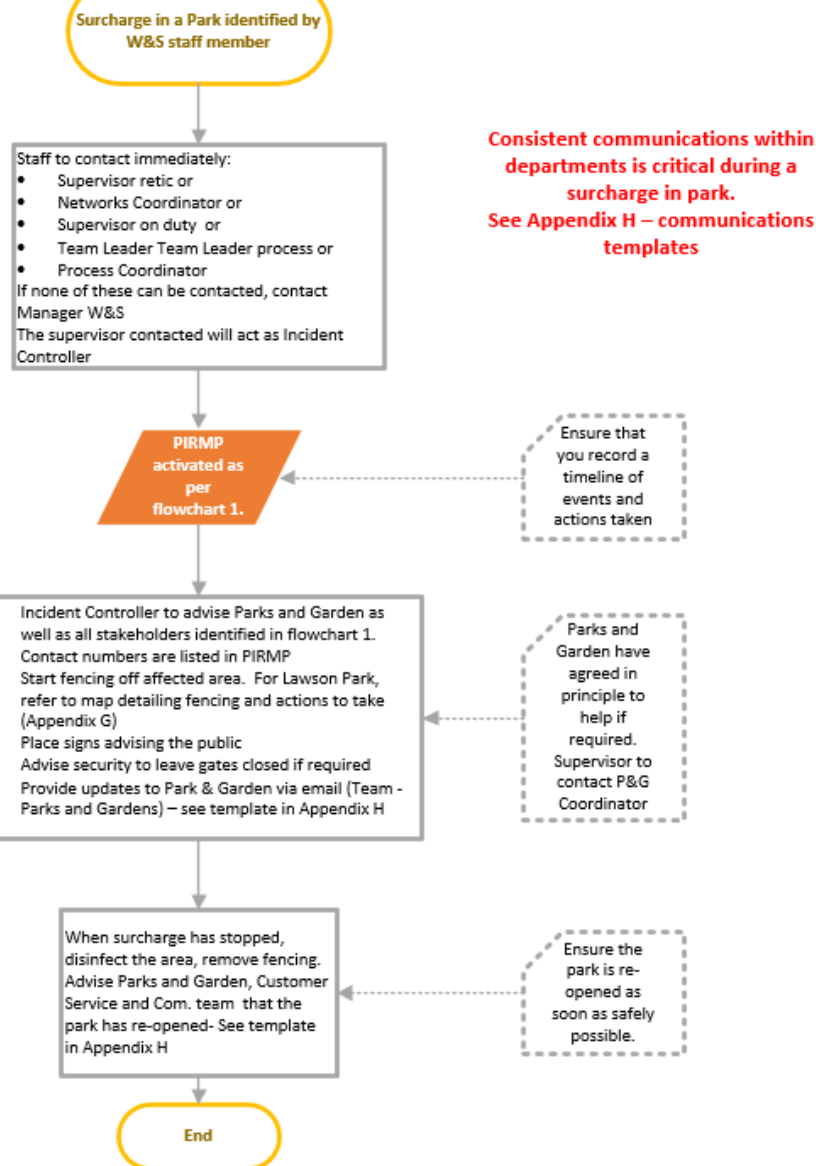


Figure 3: Surcharge in a Park - Flowchart

## Initial Call Management

Pollution incident is identified either by the public or by Water and Sewer Operator.

**If there is immediate threat to human health or properties, call triple zero (000 or 112 if using a mobile phone)** and follow emergency evacuation protocol as required.

Operator to advise supervisor immediately and **start isolating the site** to prevent un-authorised entry. If possible, contain the incident and prevent it from spreading without endangering staff and/or public. Remain upwind if incident involves smoke or fumes.

Operator and Supervisor will assess if the incident poses a risk of material harm to the environment as defined in section 147 of the POEO Act. Flowchart 1 can help with the assessment.

Material Harm is defined as:

*(i) involving actual or potential harm to the health or safety of human beings or to ecosystems that is not trivial, or  
(ii) resulting in actual or potential loss or property damage of an amount, or amounts in aggregate, exceeding \$10,000 (or such other amount as is prescribed by the regulations)  
and the loss includes the reasonable costs and expenses that would be incurred in taking all reasonable and practicable measures to prevent, mitigate or make good harm to the environment.*

If the incident is identified as **NOT** posing a risk of material harm, contain the incident, clean up the area and prepare a minor (Near Miss) incident report (Appendix D). In this instance, the PIRMP does not need to be activated.

If the incident is identified as **posing a risk** of material harm, Supervisor to ensure Water and Sewer Process Coordinator and Manager Water and Sewer are advised of the situation. The PIRMP must be **activated immediately**.

The following agencies **MUST** be contacted as soon as possible:

- EPA on 131 555
- NSW Health Dubbo Office (Mark Nave 6809 8977, 0407 551 548)

In case of major incident (potential or actual harm to human and the environment AND/OR assistance is required with cleanup from other agencies), the following agencies **MUST ALSO** be contacted as soon as possible:

- SafeWork NSW 131 050
- Fire and Rescue Mudgee 6372 6772

Further authorities may need to be contacted as required see page 4 (notification of authorities, continued)



## Incident Management

Incident Controller will take charge of the incident (generally Coordinator/Supervisor/Team Leader first on site). This staff member will be in charge of managing all aspects of the response to the incident. Depending on the scale of the incident, an Operation Controller can be appointed by the Incident Controller. The Operation Controller will be in charge of all technical aspects of the incident while the Incident Controller will be liaising with external agencies and internal communications, logistic and planning.

Incident and/or Operation Controller, with the help of internal and external technical advisors (DCCEEW, external contractors) if required, is to devise the course of action to be taken to contain, repair and clean up the affected area. Incident Controller will also allocate resources (staff, equipment etc) required to be able to deal with the incident in a timely manner. Incident Controller to consider the need to activate Gulgong WTP incident response plan (contamination in Cudgegong River)

Incident controller to contact Communication team and Customer Services as required to advise of incident and request assistance with communication to the community as required. Incident Controller to organise contacting Stakeholders listed in Appendix A as required. The Incident Controller will regularly review the need for communications updates.

In the event of a chemical or sewage spill, Mid-Western Regional Council staff will go to prominent and/or high use areas, erect signage and advise users. The signs are to warn users of the contamination and advise them to avoid using the area until contamination has cleared.

Incident or Operation Controller to organise sampling\* as required and to advise MWRC Environmental Officer.

Incident Controller to remind all staff involved in the incident to keep a timeline and record all actions taken during the incident.

## Post Incident

Incident Controller is satisfied that the incident is under control, repairs have been done and cleanup completed.

EPA and other agencies to be notified of incident completed as required.

Incident Controller to ensure that investigations into the incident, including root cause analysis, are done and report to EPA produced within 7 days. Appendix E can be used to report a sewage spill or overflow. Appendix F can be used as the basis for reporting any incident

PIRMP to be tested within 1 month of incident and amended as required

*\* Note: To facilitate sampling in case of an environmental incident, PIRMP sampling boxes have been made. The PIRMP boxes include 3 lots of bottles (upstream, at site and downstream), sampling SOP, Chain of Custody and some spare bottles. PIRMP Boxes are at Mudgee STP, Putta Bucca SPS and Mudgee Operations depot.*

## Staff training

Training in relation to the PIRMP will have three forms:

- for new members of staff at the premises, the specific induction for the premises will include details of the PIRMP,
- refresher training undertaken as part of the annual testing of PIRMP, and
- as deemed necessary, particularly after an incident that required implementation of the PIRMP

PIRMP will be tested yearly as a training exercise. This training exercise will involve all Water and Sewer staff that could potentially be involved in an actual incident.

A realistic scenario will be presented to staff who will need to highlight all steps that will be taken to:

Activate the PIRMP

Contain the incident

Report the incident

Advise the community (if scenario requires)

Clean up and close the incident

## Testing and updating of the PIRMP

### PIRMP testing details

Date tested	Tested by	Details of test	Finding of test, including issues identified	Next scheduled testing date (must be within 12 months from current test)
3/10/2024	Operators, Water Quality, Manager, Coordinators	Debrief and review of PIRMP following incident 09/09/2024		09/2025
30/07/2024	Operators, Team Leaders, Electrician, Maintenance, Engineers, Coordinators, Water Quality, Manager, Admin, Recovery Officer, Project Officer	A sewer main has cracked or failed up stream of the Putta Bucca pump station.	incorporate low flow alarms into SCADA to alert to major main breaks Investigate options to use SMS during an emergency	July 2025

27/07/2023	Manager, Coordinators, Water Quality Scientist, Team Leaders, Operators, Admin Officer	Scenario: The dewatering unit at Mudgee STP is not working well and the sludge going in the truck is extremely wet. When the operator drives the truck to dispose of the sludge in the landfill, sludge is dripping all over the road and weighbridge.	Audit of spill kit required Check aquabags/sand bags requirements	July 2024
1/09/2022	W&S Process Coordinator, Parks and Gardens Coordinator Water Quality Scientist, Team Leader, Operators, Admin Officer	Debrief and desktop review of PIRMP following Lawson Park Surcharge	Amended Contact details and flowcharts	September 2023
27/07/2022	W&S Process Coordinator, W&S Network Coordinator Water Quality Scientist, Team Leader, Operators, Admin Officer	Debrief and desktop review of PIRMP following Lawson Park Surcharge	no changes required	July 2023
26/05/2022	W&S Process Coordinator, Water Quality Scientist, Team Leader, Operators	Debrief and desktop review of PIRMP following Lawson Park Surcharge	Amended Contact details	May 2023
13/04/2022	W & S Process Coordinator W&S Network Coordinator Team Leader Water Quality Scientist Operators	Desktop review of PIRMP Documentation following debriefs	Amended Contact details and flowcharts	April 2023
09/03/2022	W & S Process Coordinator W&S Network Coordinator	Desktop review of PIRMP Documentation following debriefs	Amended Contact details	March 2023

	Team Leader Water Quality Scientist Operators			
7/02/2022	W & S Process Coordinator Treatment Team Leader Water Quality Scientist Operators	Desktop review of PIRMP Documentation following debriefs	Toolbox talk to be developed	February 2023
09 and 14th December 21	Manager W&S W & S Process Coordinator Treatment Team Leader Water Quality Officer Water and Sewer Networks Coordinator Operators	Desktop review of PIRMP Documentation following debriefs	Amended flowchart Amended contact details Amended Appendix E	Dec 22
09 August 2021	Manager W&S W & S Process Coordinator Treatment Team Leader Water Quality Officer Water and Sewer Networks Coordinator Operators Project Officer	Two scenarios were presented (one requiring PIRMP activation and one not requiring PIRMP activation) and tested	All aware of changes in the PIRMP	9 August 2022
19 April 2021	Manager W&S W & S Process Coordinator Planning Engineer Treatment Team Leader Water Quality Officer Admin Officer	Desktop review of PIRMP Documentation following MSTP pipeline failure on 24 <sup>th</sup> March	Some contact details of major stakeholders out of date. Include all identified downstream stakeholders. Chemical list to be updated Flowchart to be reviewed Maps to be reviewed and be more detailed. Also to include Pump stations	19 April 2022


Review the whole document and transfer to template (Appendix B: PIRMP Template)

**PIRMP update details**

Date update occurred	Reason for update (e.g. address issues identified in testing, contact details/personnel have changed)	Details of updates (nature of changes to PIRMP)	Date the updated version uploaded to website (if applicable)	Date of completion
March 2025	Annual review	Contact details checked, List of chemicals updated, Site plan updated		
July 2024	Contact details updated	changes in contact details	July 2024	July 2024

1/12/2023	Contact details updated	DPE contact. Downstream Stakeholders Flow diagrams	Dec 2023	Dec 2023
21/09/2022	Items identified during PIRMP debriefs	Flowchart amended, Contact details amended, Communication Appendix added	September 2022	September 2022
April 2022	Items identified during PIRMP Testing	Contact details amended	May 2022	
December 21	Items identified during PIRMP testing of 9 <sup>th</sup> and 14 <sup>th</sup> December	Process Coordinator contact details flowchart amended	December 21	17/12/2021
September 21	DPIE contact name and number changed	DPIE contact	Not applicable	21/09/2021
July 21	Outdated items identified during the PIRMP testing of 19 April 2021	Flowcharts amended, chemical list amended, stakeholder list amended, maps amended. PIRMP document transferred into EPA template	12 August 2021	27/07/2021
July 2020	Yearly review		August 2020	
February 2019	Yearly Review		February 2019	

## Appendix A: MWRC Risk Matrix

 <b>MID-WESTERN REGIONAL COUNCIL</b>						<b>RISK MATRIX</b>					REF: WHS302 REV: 1.0
						<b>LIKELIHOOD</b>					
						<b>A</b>	<b>B</b>	<b>C</b>	<b>D</b>	<b>E</b>	
						Rare	Unlikely	Possible	Likely	Almost Certain	
						Requires unusual chain of events	Not expected to occur	May Occur	Will occur occasionally	Expected to occur	
<b>POTENTIAL CONSEQUENCE</b>											
<b>No.</b>	<b>Key Word</b>	<b>Health &amp; Safety</b>	<b>Environmental</b>	<b>Financial</b>	<b>Public Image</b>						
<b>5</b>	<b>Catastrophic</b>	Fatality or work related fatal disease	Detrimental impact to environment or community. High level prosecution.	Greater than \$500,000	International media coverage	Moderate 13	High 19	Critical 22	Critical 24	Critical 25	
<b>4</b>	<b>Severe</b>	Serious Permanent injury or illness	Long term negative impact. Low level prosecution.	No more than \$500,000	National media coverage	Moderate 10	Moderate 12	High 18	Critical 21	Critical 23	
<b>3</b>	<b>Serious</b>	Lost time injury or illness	Serious but reversible impact Media enquiry.	No more than \$100,000	State media coverage	Low 6	Moderate 9	Moderate 11	High 17	Critical 20	
<b>2</b>	<b>Significant</b>	Medically treated injury or illness	On-site incident promptly contained requiring external clean up aid.	No more than \$25,000	Local media coverage.	Low 4	Low 5	Moderate 8	High 15	High 16	
<b>1</b>	<b>Minor</b>	First Aid treated injury or illness	On-site incident immediately contained & cleaned up.	No more than \$5,000	Public complaint.	Low 1	Low 2	Low 3	Moderate 7	High 14	
<b>STATUS</b>		<b>ACTION REQUIRED</b>				<b>NOTIFY</b>				<b>MONITOR</b>	
<b>Critical</b>		Do not commence activity. Immediate senior management action required.				General Manager (Notified by Group Mgr)				N.A.	
<b>High</b>		Immediate action required to reduce risk. Authorisation required before commencing activity.				Group Manager (Notified by Operational Mgr)				Weekly	
<b>Moderate</b>		Risk reduction required to as low as reasonable practicable before commencing task				Operational Manager				Monthly	
<b>Low</b>		Follow routine procedures and monitor risk.				Team Leader				Annually	

## **Appendix B: Maps of STP and Sewerage System**



Mudgee STP is located at the back of the MWRC Waste Facility, 33 Blain Road Carleon 2850 NSW. The Waste facility has its own EPA Licence (6348) and associated PIRMP.









[illegible]

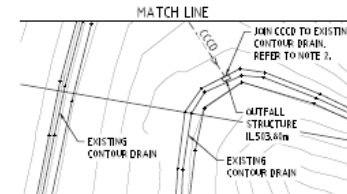
	CUT-OFF DRAIN
	TOE DRAIN
	CASCADING CAST-IN-SITU CONCRETE DRAIN (CCCD)
	CATCH DRAIN
	R.C. PIPE, FIT & HEADWALL
	FIT NUMBER
	CATCH DRAIN SETOUT POINT
SEP	SIDE ENTRY FIT
GSP	GRADED SURFACE INLET FIT
VSP	VERTICALLY GRADED SURFACE INLET FIT
LGSP	LETTER BOX GRADED SURFACE INLET FIT

1. ALL PIPEMENTS ARE APPROXIMATE ONLY. PIPES TO BE CUT TO FLAT ON SITE.
2. FOR EARTHWORKS DRAINS AND CASCAING CAST-IN-SITU CONCRETE/RAIN (CDD) IN/OUTLIFT STRUCTURE DETAILS REFER TO DRAWING NO. 21-6A45-5974.
3. FOR CONNECTION OF R.C.P.E AND TOE DRAIN TO CDD REFER TO DETAIL ON DRAWING NO. 21-6A45-5974.
4. FOR CONNECTION OF ROLLER RACE TURNOUT CUT-OFF DRAIN AND TOE DRAIN REFER TO DRAWING NO. 21-6A45-5931.
5. FOR PIT DIMENSIONS, PIT TYPE DETAILS AND TRENCH DETAILS REFER TO DRAWING NO. 21-6A65-9151.
6. CATCH DRAIN No. 4 IS TO BE LOCATED BETWEEN CHEMICAL PIT NO. 1 AND PROTECTIVE SLOUGH IN DRG. NO. 21-6A45-5971 AT PIT LEVELS TO BE AS SHOWN IN CATCH DRAIN SETOUT TABLE.

PIT NO.	EASTING	NORTHING	PIT TYPE	TOP OF GRAVEL
1	326144.827	9393173.541	LB65P	504.16
NOT USED				
3	326150.136	9393180.944	HEADWALL	504.02
4	326641.163	939401.980	SEP	515.02
5	326154.574	9393174.473	SEP	514.41
6	326172.161	9393153.365	V65P	514.48
7	326553.122	9393172.228	SEP	513.67
8	326154.574	9393174.473	SEP	512.95
9	327119.916	9393158.871	SEP	512.53
10	326174.265	9393181.344	SEP	510.32
NOT USED				
12	326451.555	9393154.405	SEP	515.77
13	326543.902	9393150.501	SEP	515.61
14	326539.912	9393255.164	SEP	516.51
15	326174.143	9393295.154	SEP	517.67
16	326491.251	9393275.479	65P	512.41
17	327333.950	9393174.478	SEP	511.49
18	326174.143	9393272.737	65P	511.54
19	327335.676	9393295.944	SEP	512.08
20	326180.792	9393296.156	65P	512.08
21	326174.194	9393274.168	HEADWALL	504.07
22	326465.116	9393155.848	LB65P	513.49
23	326463.697	9393161.171	LB65P	513.43
24	326460.557	9393169.551	G-65P	513.40
25	326469.901	9393170.555	LB65P	504.33
26	327334.984	9393170.748	SUMP Δ	513.36
27	326177.908	9393172.614	SEP	513.39
29	326455.914	9393173.033	HEADWALL	517.50
30	326175.815	9393174.095	LB65P	511.30
31	326475.505	9393293.444	LB65P	512.65
32	326177.444		LB65P	510.10

PIPE NO.	PIPE SIZE (mm)	PIPE TYPE & CLASS	PIPE LENGTH (m)	GRABENT (ISO)	UP-STREAM LEVEL	DOWN-STREAM LEVEL
1-3	300	RF- RFJ-4	18.9	2.07	518.10	518.02
4-6	300	RF- RFJ-4	7.5	1.71	519.40	519.20
5-6	300	RF- RFJ-2	5.3	2.20	519.30	519.20
6-7	300	RF- RFJ-2	21.2	1.86	519.20	519.00
7-8	300	RF- RFJ-2	32.3	5.28	519.50	519.40
8-9	300	RF- RFJ-4	19.5	2.85	519.70	519.90
30-9	300	RF- RFJ-4	17.8	2.87	519.60	519.08
9-10	300	RF- RFJ-4	44.1	0.48	519.88	519.65
10-11	315	RF- RFJ-4	28.4	0.52	519.50	519.35
11-16	315	RF- RFJ-2	20.4	0.96	519.35	519.5
12-14	300	RF- RFJ-2	11.2	1.34	519.75	519.60
13-17	300	RF- RFJ-2	14.6	4.16	519.30	519.70
14-5	300	RF- RFJ-3	19.4	10.63	519.70	519.60
5-6	300	RF- RFJ-3	14.5	2.36	519.50	519.10
16-17	300	RF- RFJ-3	41.4	1.45	519.10	519.50
17-18	300	RF- RFJ-2	12.8	4.40	519.50	519.00
18-9	315	RF- RFJ-2	59.7	1.54	519.5	519.55
19-20	315	RF- RFJ-2	15.0	1.71	519.55	519.45
20-21	315	RF- RFJ-2	32.6	18.97	519.45	519.47
22-23	150	uPVC	72.1	1.06	519.29	519.15
23-24	150	uPVC	16.2	1.29	519.32	519.15
24-25	150	uPVC	4.6	8.00	519.5	519.33
25-26	300	RF- RFJ-4	22.9	1.67	519.33	519.85
27-28	100	uPVC	3.5	1.43	519.74	519.69
28-29	100	uPVC	8.0	2.24	519.69	519.50
31-5	300	RF- RFJ-2	8.67	1.15	519.60	519.50
31-10	150	uPVC	71.4	1.02	519.75	519.55

- WHERE INSUFFICIENT COVER  
EXISTS TO STORMWATER PIPES,  
PROVIDE CONCRETE ENCASEMENT  
IN ACCORDANCE WITH DWG. 6904.



<b>DO NOT SCALE</b>		Drawn: S. THYBORG	Designed: F. GARRICZKA	Client: MID-WESTERN REGIONAL COUNCIL
		Checking: CHUCK		Project: MUDGEE SEWERAGE AUGMENTATION
Conditions of Use: This document may only be used by the City and any other person who has agreed to this document. It is not to be used for any other purpose and must not be used in any other context or for any other purpose.		Approved:		Title: STP - STORMWATER DRAINAGE SITE PLAN
Date:		Date:		
Scale: 1:500		Notes: This drawing is not to be used for construction purposes.	Original Size: A1	Drawing No: 21-16645-G030
				Rev: X

The map displays the Mudgee region with the following features:

- Cudgong River:** Indicated by a blue line and a label with an arrow pointing to the river.
- Mudgee STP:** Marked with a red square and labeled.
- Effluent discharge:** Indicated by two blue stars on the river.
- Putta Bucca SPS:** Marked with a red square and labeled.
- Towns and Areas:** MUDGEE, PUTTA BUCCA, BOMBIRA, CAERLEON, and SPRING FLAT.
- Infrastructure:** DOURO STREET, WALTERSWANG RAILWAY, and CASTLEREAGH HIGHWAY.
- Geography:** AVISFORD National Park is shown in green at the bottom left.
- Property:** Numerous land parcels are outlined in red and yellow, with some labeled with numbers (e.g., 1147716, 136904, 265664).

