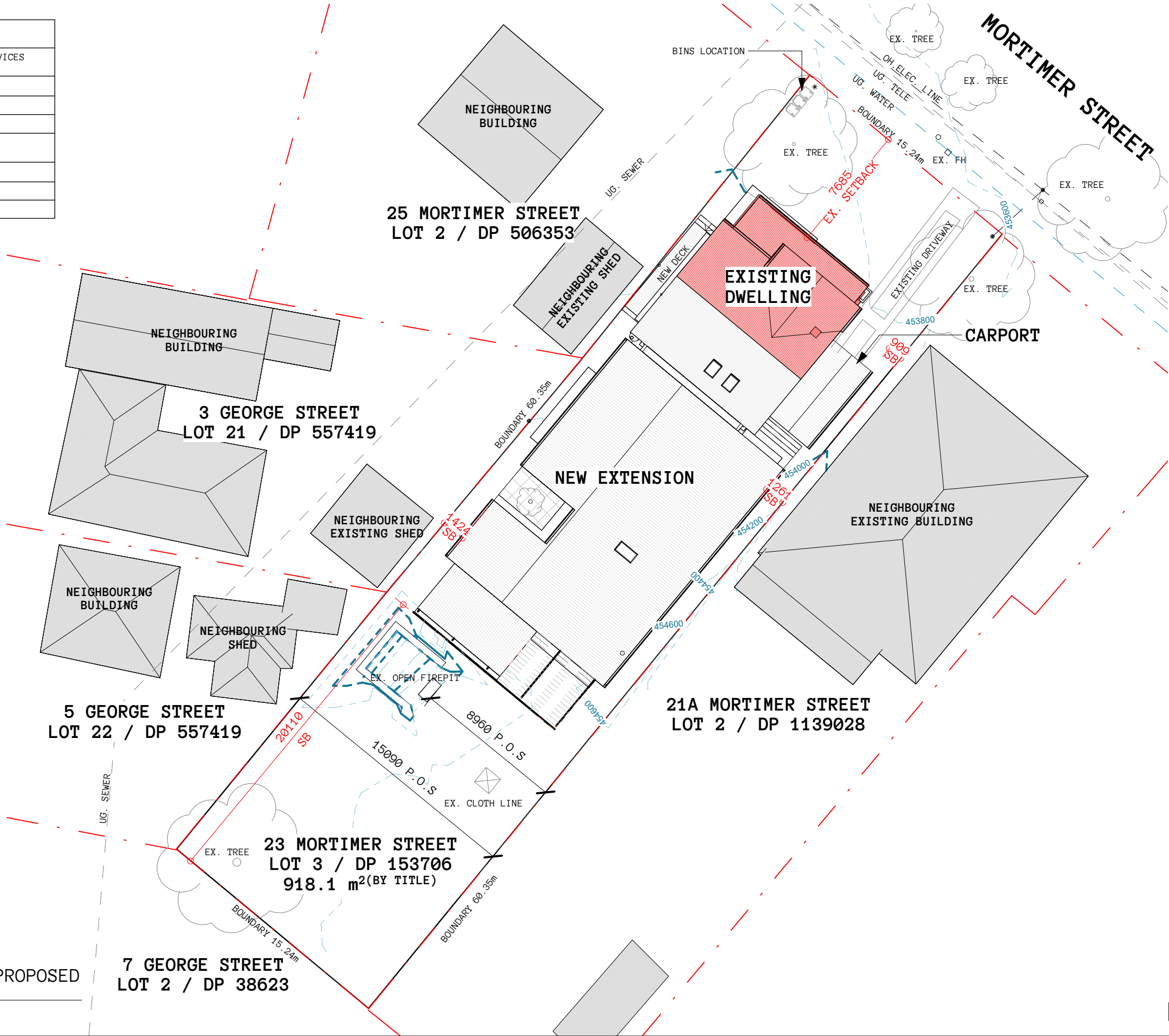


SITE SERVICES	
CONTRACTOR TO ALLOW FOR THE FOLLOWING SITE SERVICES AND/OR CONNECTIONS	
SERVICES	NOTES
ELECTRICAL	CONNECT TO EX. SERVICES
SOLAR	TBC
SEPTIC	N/A
SEWER	CONNECT TO EX. SERVICES
WATER TANKS	TBC
BUSHFIRE	N/A



1
DA03

DA_SITE PLAN – PROPOSED

1 : 250

DA SUBMISSION



Cameron Anderson Architects | ABN 78385853147
NSW Nominated Architect | Cameron Anderson NSW 8560

5 Lovejoy St, Mudgee, NSW
PO Box 3, Mudgee NSW, 2850
p. 02 6372 6690
m. 0409 257 688

info@caarch.com.au
www.caarch.com.au

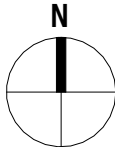
Check all dimensions & site conditions prior to the commencement of any work, the purchase or ordering of any materials, fittings, plant, services or equipment & the preparation of shop drawings and/or the fabrication of any components.

Do not scale off drawings – refer to figured dimensions only. Any discrepancies shall immediately be referred to the architect for clarification.

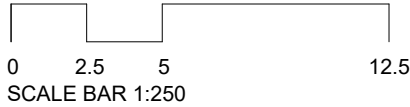
All drawings may not be reproduced or distributed without prior permission from the architect.

Copyright in all drawings and documents prepared by Cameron Anderson Architects & any works executed from those documents remain the property of Cameron Anderson Architects

REV	DESCRIPTION	DATE
01	DA ISSUE FOR REVIEW	28.08.2023
02	DA ISSUE	07.09.2023



Scale As indicated



HARLEY RESIDENCE

23 MORTIMER STREET MUDGE NSW 2850
LOT 3 / DP 153706

SITE PLAN

Project No.	Status	Drawing No.	Revision
373	DA	DA03	02