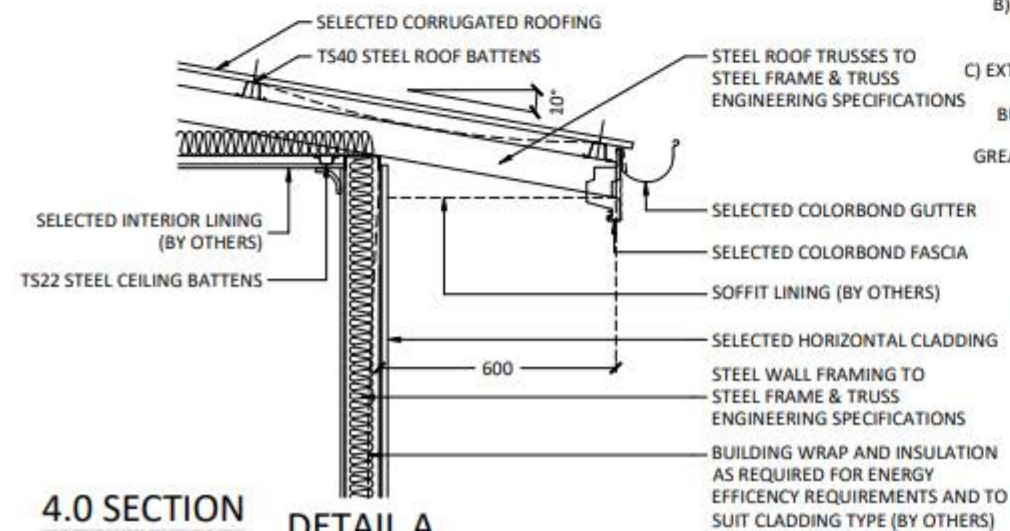


\*NOTE: THE HEIGHT OF THE FINISHED INTERNAL SLAB LEVEL ABOVE THE EXTERNAL FINISHED SURFACES SHALL BE AS FOLLOWS:  
 A) MINIMUM 150mm ABOVE FINISHED GROUND LEVEL OR AS REQUIRED BY CLADDING MANUFACTURERS SPECIFICATIONS.

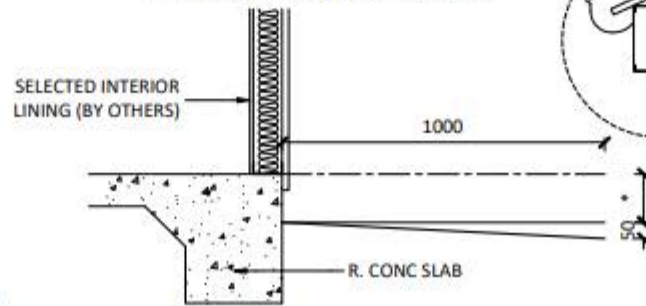
B) MINIMUM 50mm ABOVE PAVED/CONCRETED AREAS THAT SLOPE AWAY FROM THE BUILDING @ 1:50mm.

C) EXTERNAL FINISHED SURFACE SURROUNDING THE SLAB MUST BE DRAINED TO MOVE SURFACE WATER AWAY FROM THE BUILDING AND GRADED TO GIVE A SLOPE OF NOT LESS THAN 50mm OVER THE FIRST 1000mm FROM THE BUILDING. GREATER CLEARANCE MAY BE REQUIRED IN ORDER TO COMPLY WITH TERMITE PROTECTION PROVISIONS.

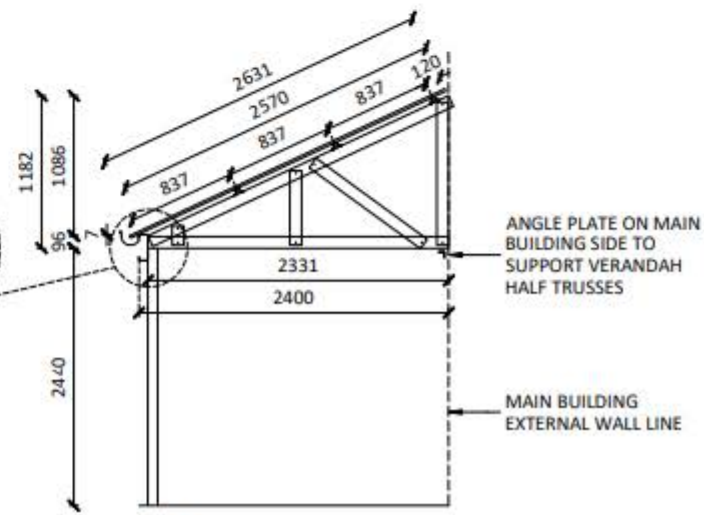


4.0 SECTION

DETAIL A



DETAIL B



VERANDAH SECTION