

GUNTAWANG STABLES

ALTERATIONS & ADDITIONS

594 GOOLMA ROAD, GULGONG, NSW 2850
LOT 3 / - / DP 718231

DA DRAWING LIST						
DWG NO	DWG NAME	REV	DESCRIPTION	DATE	ISSUED BY	ISSUED TO
D400	COVER PAGE					
D401	STAGE 01 REMOVALS SITE PLAN	01	STAGE 01 REMOVALS	11.07.2025	GT	COUNCIL
D402	STAGE 01 REMOVALS FLOOR PLAN	01	STAGE 01 REMOVALS	11.07.2025	GT	COUNCIL
D403	STAGE 01 REMOVALS ROOF PLAN	01	STAGE 01 REMOVALS	11.07.2025	GT	COUNCIL
D404	STAGE 01 REMOVALS ELEVATIONS	01	STAGE 01 REMOVALS	11.07.2025	GT	COUNCIL
D405	STAGE 01 REMOVALS COURTYARD ELEVATIONS	01	STAGE 01 REMOVALS	11.07.2025	GT	COUNCIL



AERIAL IMAGE, NTS

SOURCE: maps.six.nsw.gov.au



AERIAL PHOTO, NTS



AERIAL PHOTO, NTS

DA SUBMISSION



CAMERON ANDERSON ARCHITECTS
ABN 78385853147

5 Lovejoy St., MUDGEE NSW, 2850
PO Box 3, MUDGEE NSW, 2850
p. 02 6372 6690
m. 0409 257 688

info@caarch.com.au
www.caarch.com.au

NSW Nominated Architect
Cameron Anderson 8560

REV	DESCRIPTION	DATE
01	STAGE 01 REMOVALS	11.07.2025

Check all dimensions & site conditions prior to the commencement of any work. the purchase or ordering of any materials, fittings, plant, services or equipment & the preparation of shop drawings and/or the fabrication of any components.

Do not scale off drawings - refer to figured dimensions only. Any discrepancies shall immediately be referred to the Architect for clarification.

All drawings may not be reproduced or distributed without prior permission from the Architect.

Copyright in all drawings and documents prepared by Cameron Anderson Architects & any works executed from those documents remain the property of Cameron Anderson Architects.

GUNTAWANG STABLES

594 GOOLMA ROAD, GULGONG, NSW 2850
LOT 3 / - / DP 718231

PETER PETHER

COVER PAGE

PROJECT NUMBER 478

STATUS DA

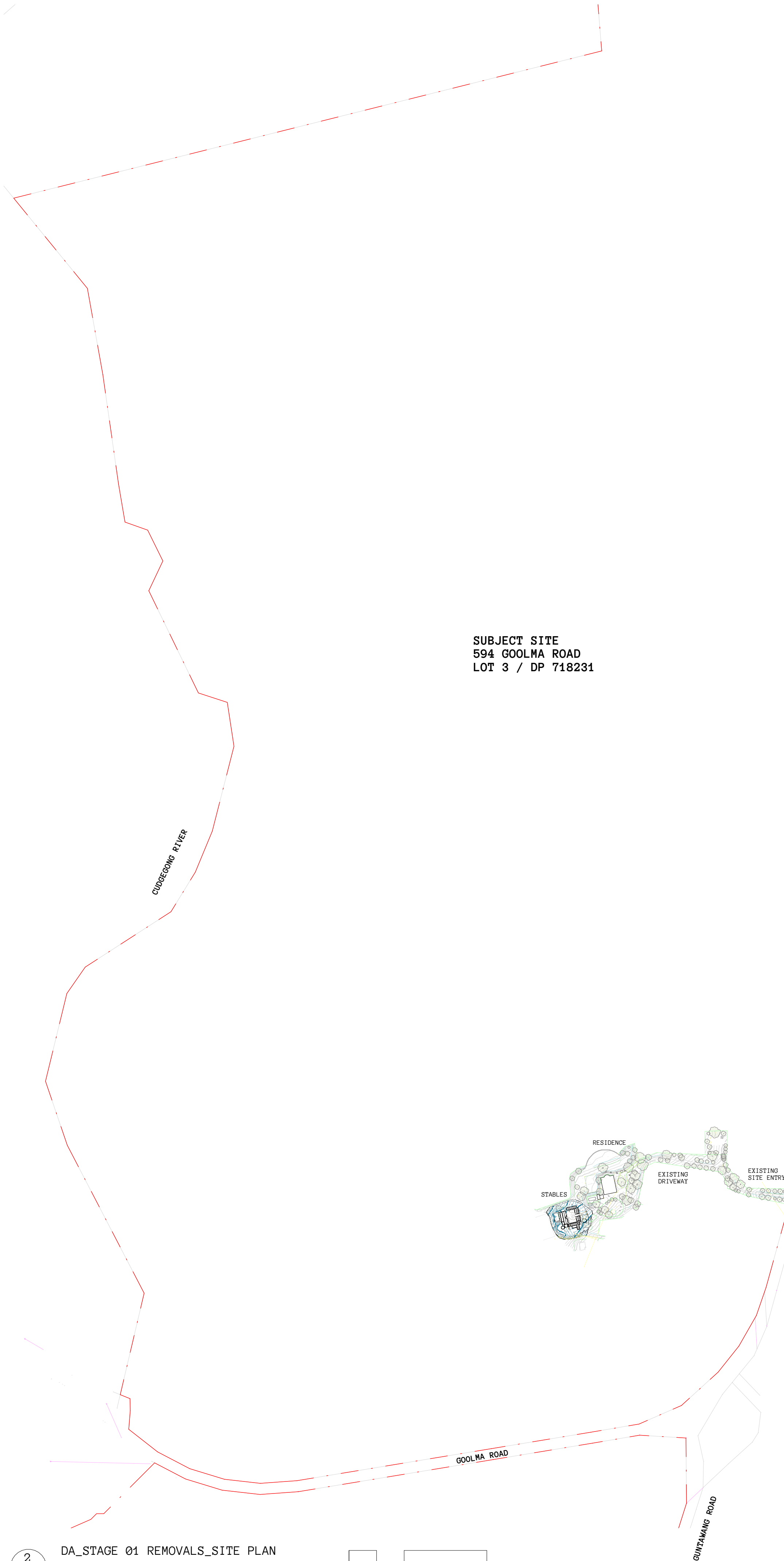
DRAWN BY GT

SCALE @A1

DRAWING NO.

D400

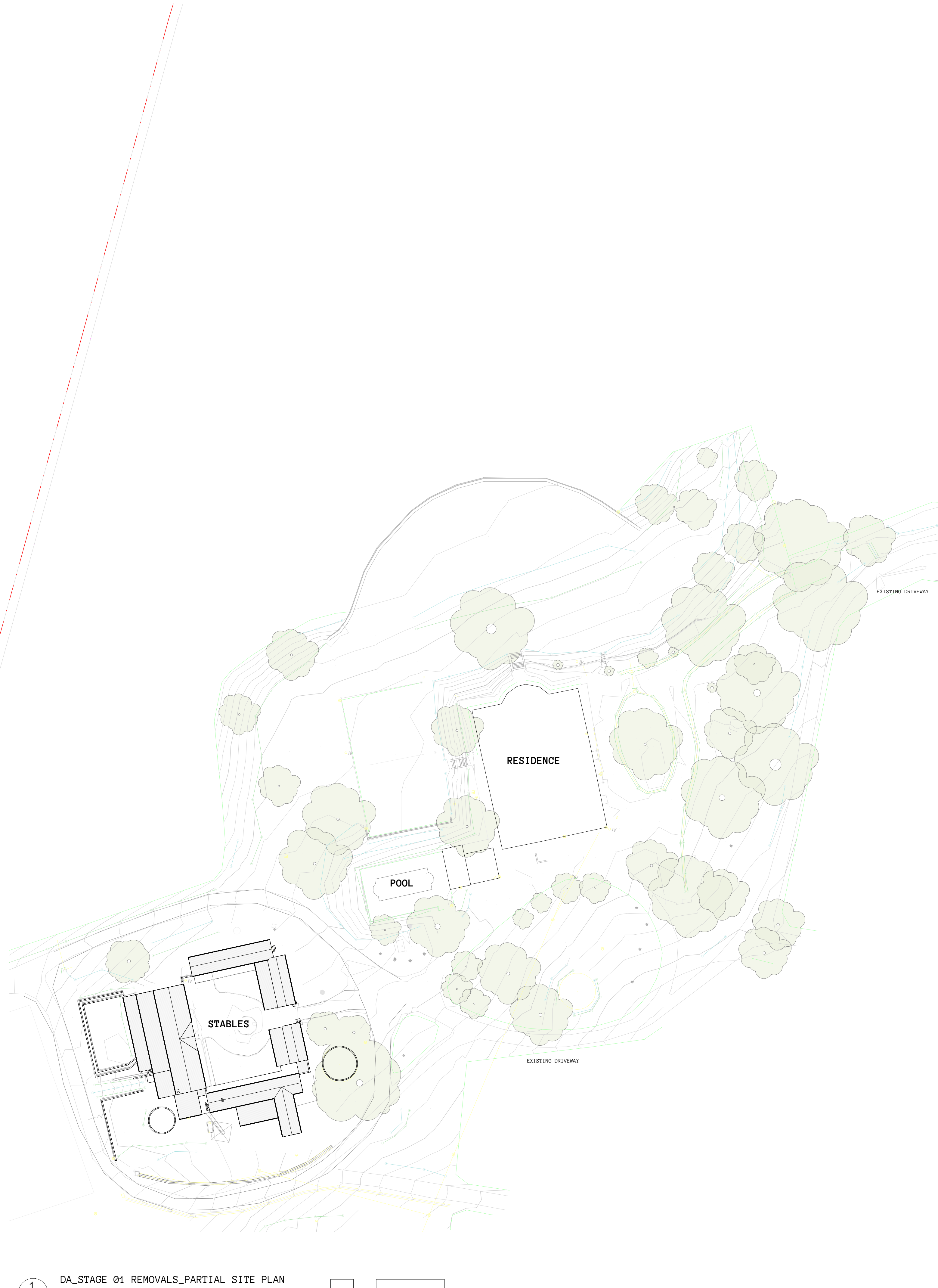
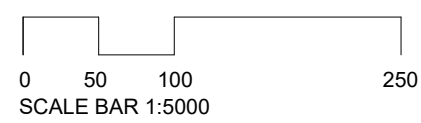
01



2
DA01

DA_STAGE 01 REMOVALS_SITE PLAN

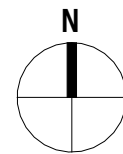
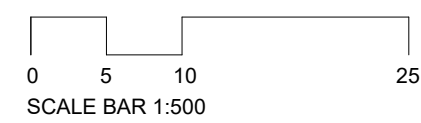
1 : 5000



1
DA01

DA_STAGE 01 REMOVALS_PARTIAL SITE PLAN

1 : 500



DA SUBMISSION



CAMERON ANDERSON ARCHITECTS
ABN 78385853147

5 Lovejoy St., MUDGEE NSW, 2850
PO Box 3, MUDGEE NSW, 2850
p. 02 6372 6698
m. 0409 257 688

info@caarch.com.au
www.caarch.com.au

NSW Nominated Architect
Cameron Anderson 8560

REV	DESCRIPTION	DATE
01	STAGE 01 REMOVALS	11.07.2025

Check all dimensions & site conditions prior to the commencement of any work. The purchase or ordering of any materials, fittings, plant, services or equipment & the preparation of shop drawings and/or the fabrication of any components.

Do not scale off drawings - refer to figured dimensions only. Any discrepancies shall immediately be referred to the Architect for clarification.

All drawings may not be reproduced or distributed without prior permission from the Architect.

Copyright in all drawings and documents prepared by Cameron Anderson Architects & any works executed from those documents remain the property of Cameron Anderson Architects.

GUNTAWANG STABLES
594 GOOLMA ROAD, GULGOONG, NSW 2850
LOT 3 / - / DP 718231

PETER PETHER

STAGE 01 REMOVALS SITE PLAN

PROJECT NUMBER 478

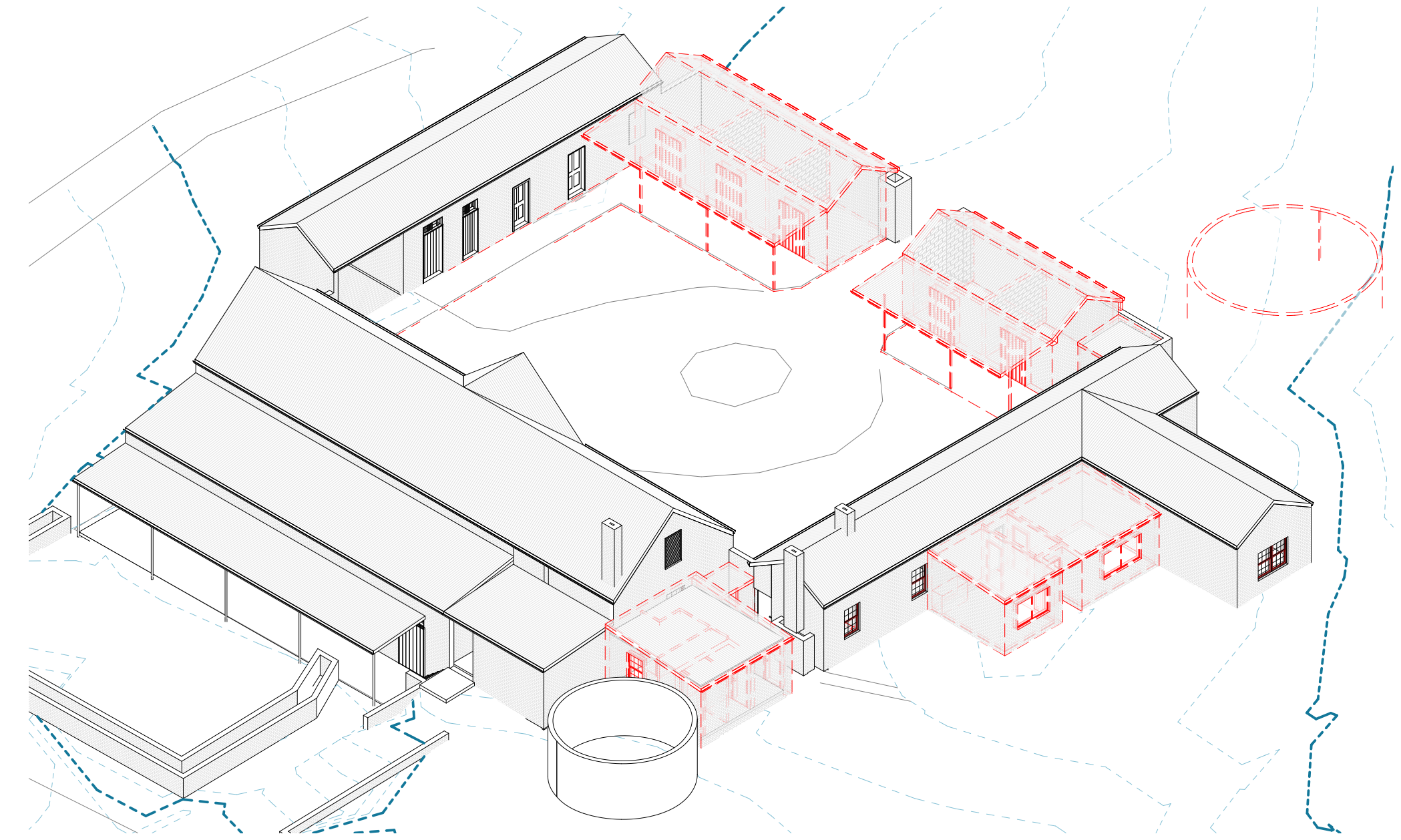
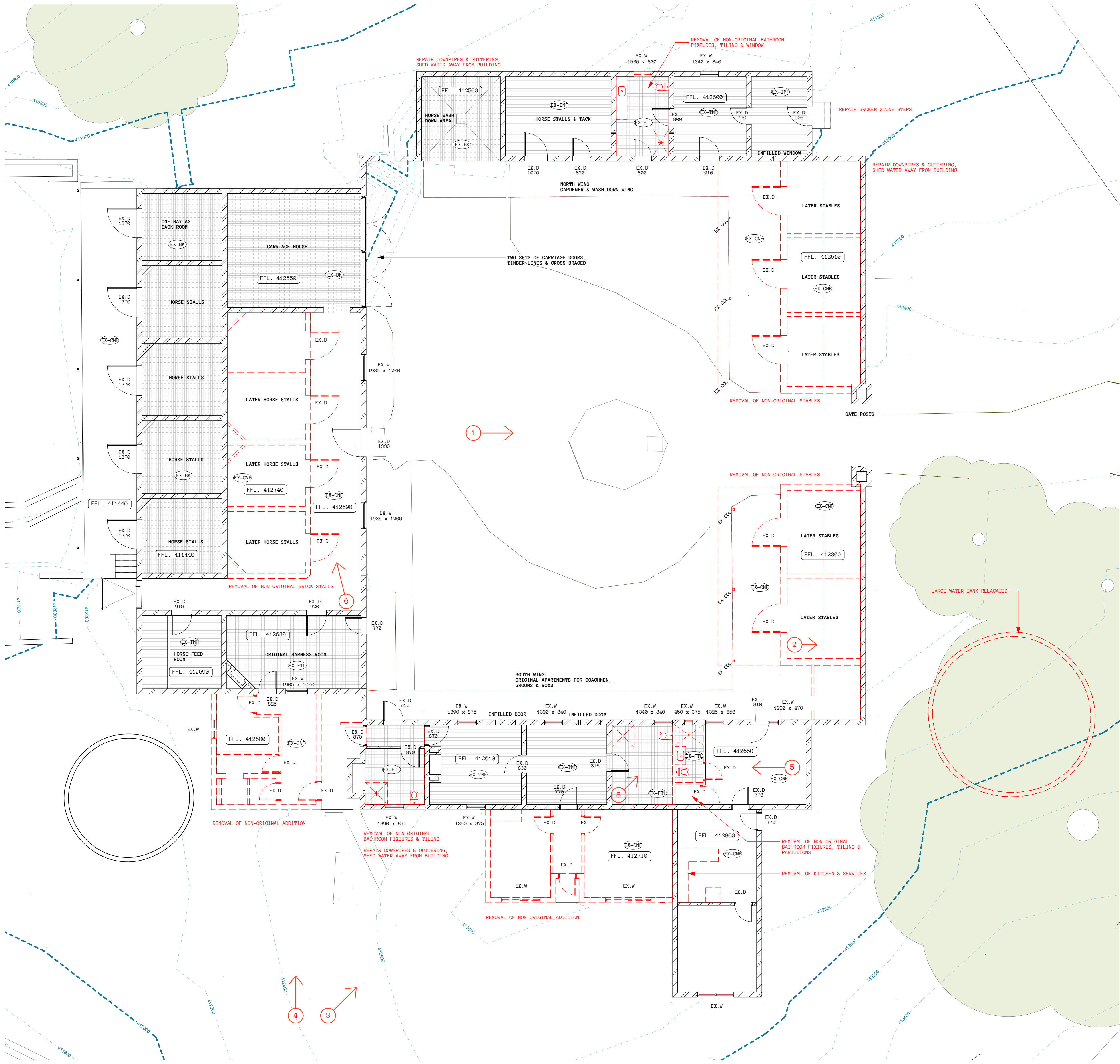
STATUS DA

DRAWN BY GT

SCALE As indicated @A1

DRAWING NO.

DA01 01



2 3D VIEW WITH REMOVALS HIGHLIGHTED
DA02



1. REMOVE NON-ORIGINAL STABLE BLOCKS



2. REMOVE WALLS & ROOF, RETAIN ORIGINAL BRICK WALL



3. REMOVE NON-ORIGINAL ADDITION



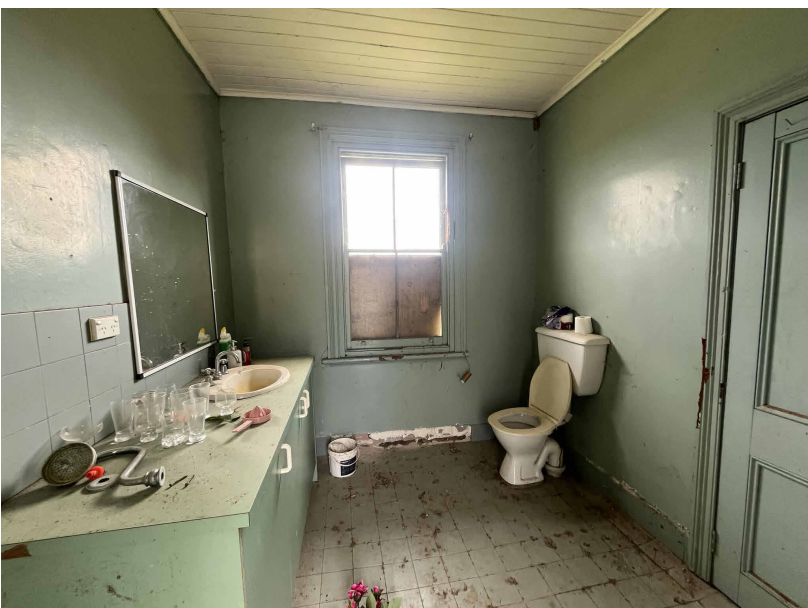
4. REMOVE NON-ORIGINAL ADDITION



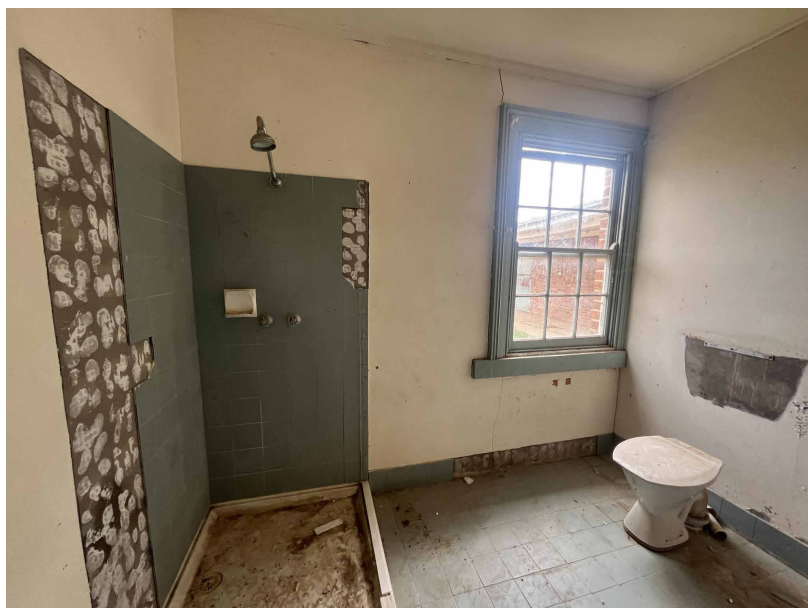
5. REMOVE PARTITIONS, FIXTURES & CEILINGS



6. REMOVE NON-ORIGINAL BRICK STALLS & CEILING



7. REMOVE FIXTURES, TILING & NON-ORIGINAL WINDOW



8. REMOVE FIXTURES, TILING, PARTITION WALL & CEILING

DA SUBMISSION



CAMERON ANDERSON ARCHITECTS
ABN 78385853147

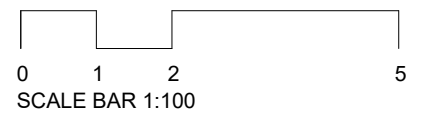
5 Lovejoy St., MUDGEE NSW, 2850
PO Box 3, MUDGEE NSW, 2850
p. 02 6372 6698
m. 0409 257 688

info@caarch.com.au
www.caarch.com.au

NSW Nominated Architect
Cameron Anderson 8560

REV	DESCRIPTION	DATE
-----	-------------	------

01	STAGE 01 REMOVALS	11.07.2025
----	-------------------	------------



SCALE BAR 1:100

Check all dimensions & site conditions prior to the commencement of any work. The purchase or ordering of any materials, fittings, plant, services or equipment & the preparation of shop drawings and/or the fabrication of any components.

Do not scale off drawings - refer to figured dimensions only. Any discrepancies shall immediately be referred to the Architect for clarification.

All drawings may not be reproduced or distributed without prior permission from the Architect.

Copyright in all drawings and documents prepared by Cameron Anderson Architects & any works executed from those documents remain the property of Cameron Anderson Architects.

GUNTAWANG STABLES

594 GOOLMA ROAD, GULGOONG, NSW 2850
LOT 3 - / DP 718231

PETER PETHER

STAGE 01 REMOVALS FLOOR PLAN

PROJECT NUMBER 478

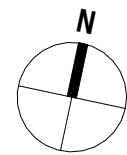
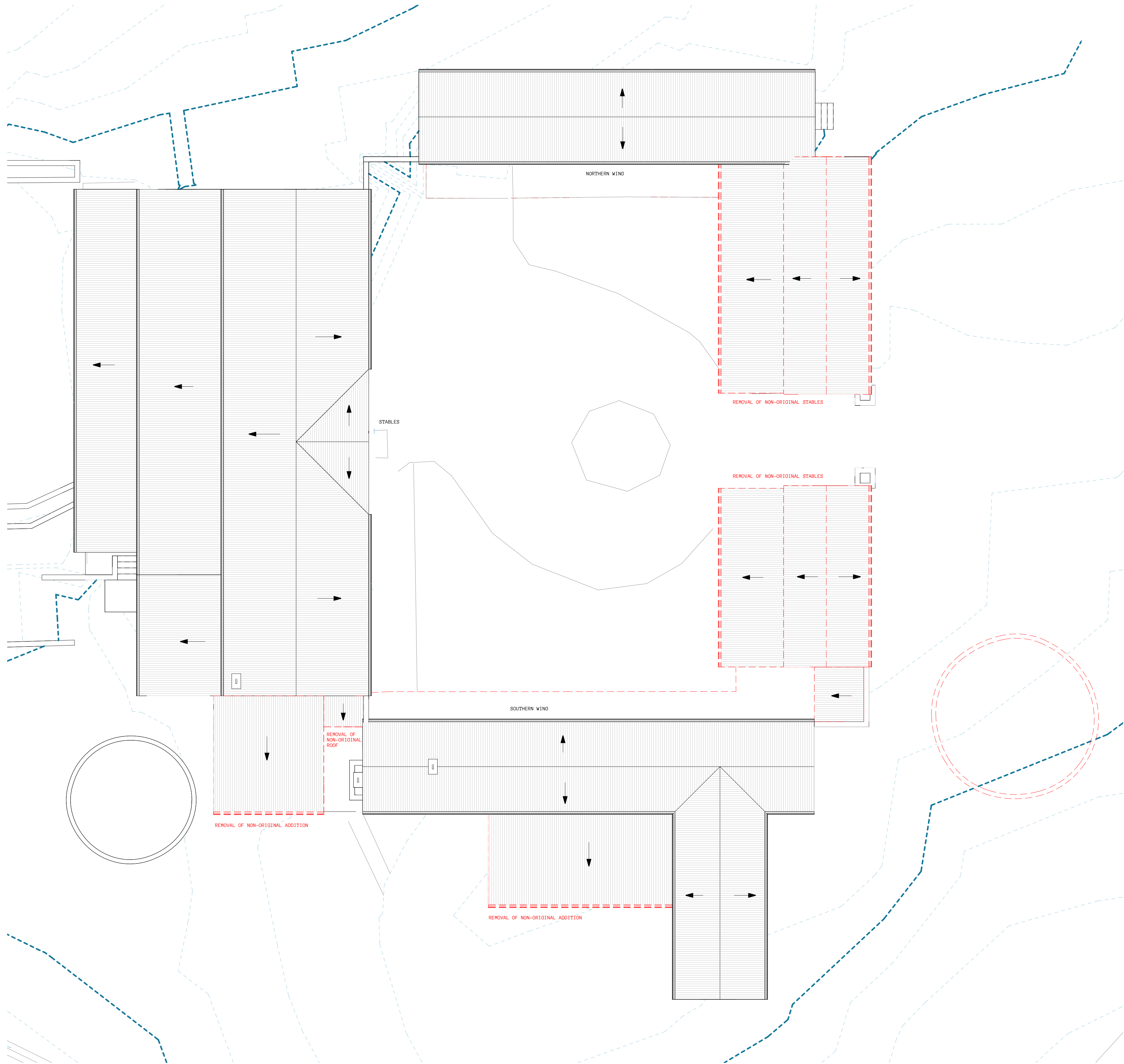
STATUS DA

DRAWN BY GT

SCALE 1 : 100 @A1

DRAWING NO.

DA02 01



DA SUBMISSION



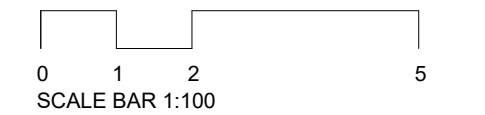
CAMERON ANDERSON ARCHITECTS
ABN 78385853147

5 Lovejoy St., MUDGEE NSW, 2850
PO Box 3, MUDGEE NSW, 2850
p. 02 6372 6698
m. 0409 257 688

info@caarch.com.au
www.caarch.com.au

NSW Nominated Architect
Cameron Anderson 8560

REV	DESCRIPTION	DATE
01	STAGE 01 REMOVALS	11.07.2025



Check all dimensions & site conditions prior to the commencement of any work. The purchase or ordering of any materials, fittings, plant, services or equipment & the preparation of shop drawings and/or the fabrication of any components.

Do not scale off drawings - refer to figured dimensions only. Any discrepancies shall immediately be referred to the Architect for clarification.

All drawings may not be reproduced or distributed without prior permission from the Architect.

Copyright in all drawings and documents prepared by Cameron Anderson Architects & any works executed from those documents remain the property of Cameron Anderson Architects.

GUNTAWANG STABLES
594 GOOLMA ROAD, GULGOONG, NSW 2850
LOT 3 / - / DP 718231

PETER PETHER

STAGE 01 REMOVALS ROOF PLAN

PROJECT NUMBER 478

STATUS DA

DRAWN BY GT

SCALE 1 : 100 @A1

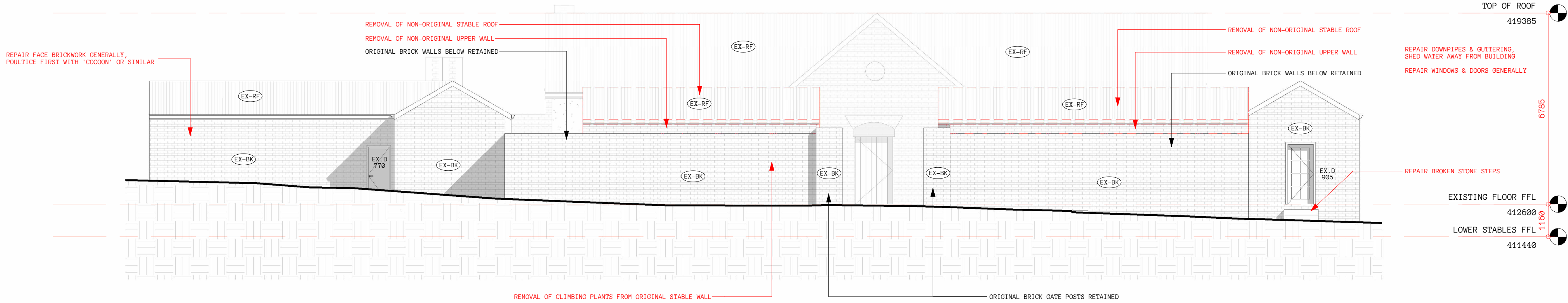
DRAWING NO.

DA03 01

1
DA03

DA_STAGE 01 REMOVALS_ROOF PLAN

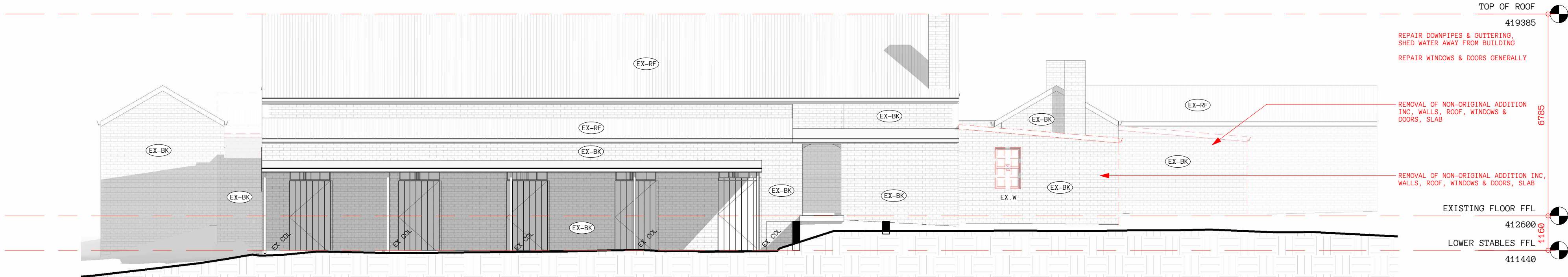
1 : 100



1
DA04

DA_STAGE 01 REMOVALS_EAST ELEVATION

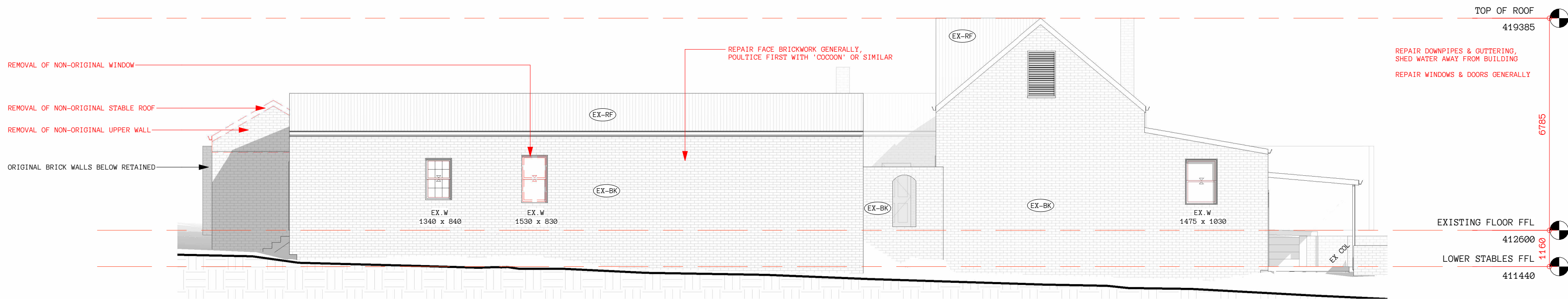
1 : 100



2
DA04

DA_STAGE 01 REMOVALS_WEST ELEVATION

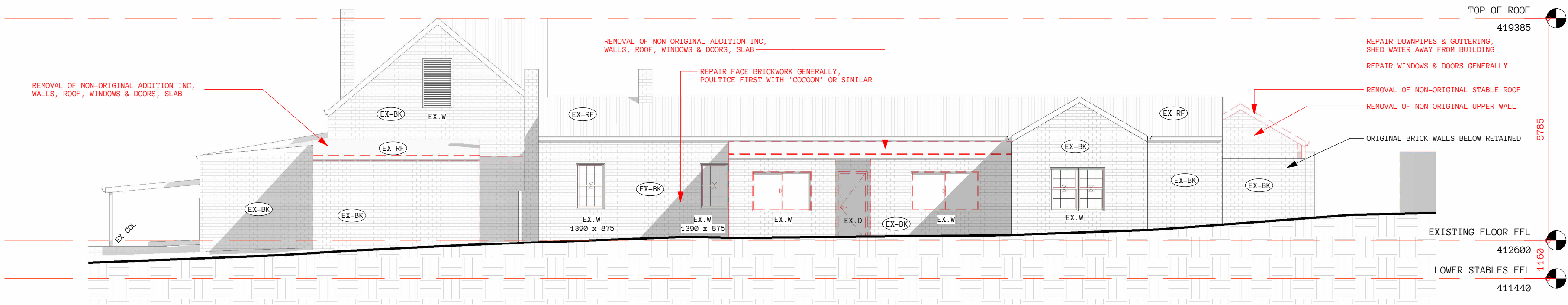
1 : 100



3
DA04

DA_STAGE 01 REMOVALS_NORTH ELEVATION

1 : 100



4
DA04

DA_STAGE 01 REMOVALS_SOUTH ELEVATION

1 : 100



DA SUBMISSION



CAMERON ANDERSON ARCHITECTS
ABN 78385853147

5 Lovejoy St., MUDGEE NSW, 2850
PO Box 3, MUDGEE NSW, 2850
p. 02 6372 6698
m. 0409 257 688

info@caarch.com.au
www.caarch.com.au

NSW Nominated Architect
Cameron Anderson 8560

REV	DESCRIPTION	DATE
01	STAGE 01 REMOVALS	11.07.2025

Check all dimensions & site conditions prior to the commencement of any work. The purchase or ordering of any materials, fittings, plant, services or equipment & the preparation of shop drawings and/or the fabrication of any components.

Do not scale off drawings - refer to figured dimensions only. Any discrepancies shall immediately be referred to the Architect for clarification.

All drawings may not be reproduced or distributed without prior permission from the Architect.

Copyright in all drawings and documents prepared by Cameron Anderson Architects & any works executed from those documents remain the property of Cameron Anderson Architects.

GUNTAWANG STABLES

594 GOOLMA ROAD, GULGOONG, NSW 2850
LOT 3 / - / DP 718231

PETER PETHER

STAGE 01 REMOVALS ELEVATIONS

PROJECT NUMBER 478

STATUS DA

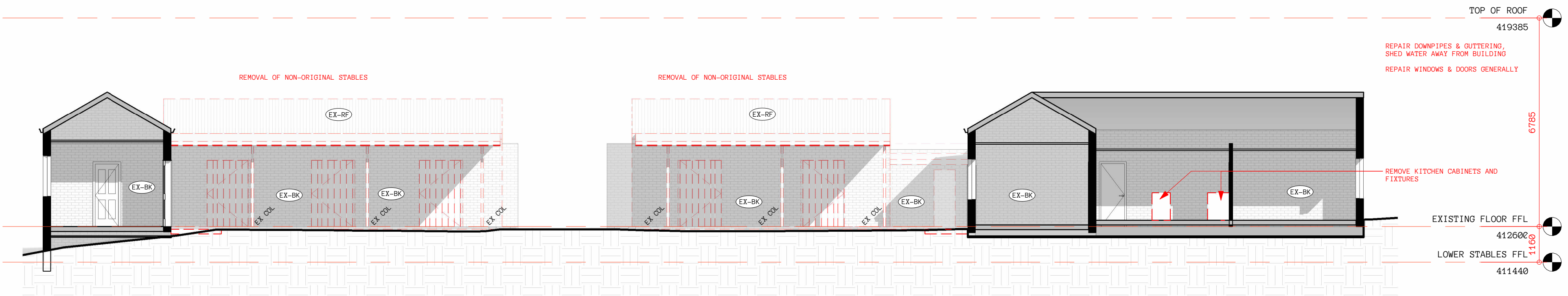
DRAWN BY GT

SCALE 1 : 100 @A1

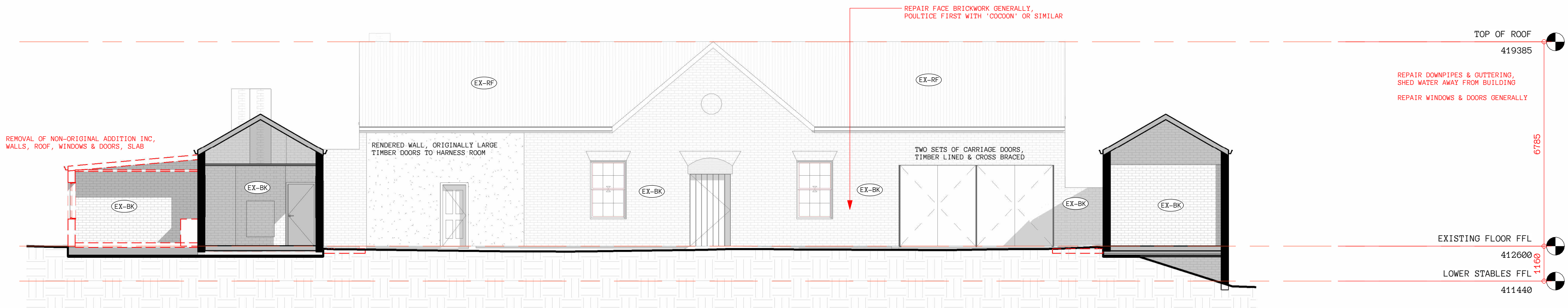
DRAWING NO.

DA04

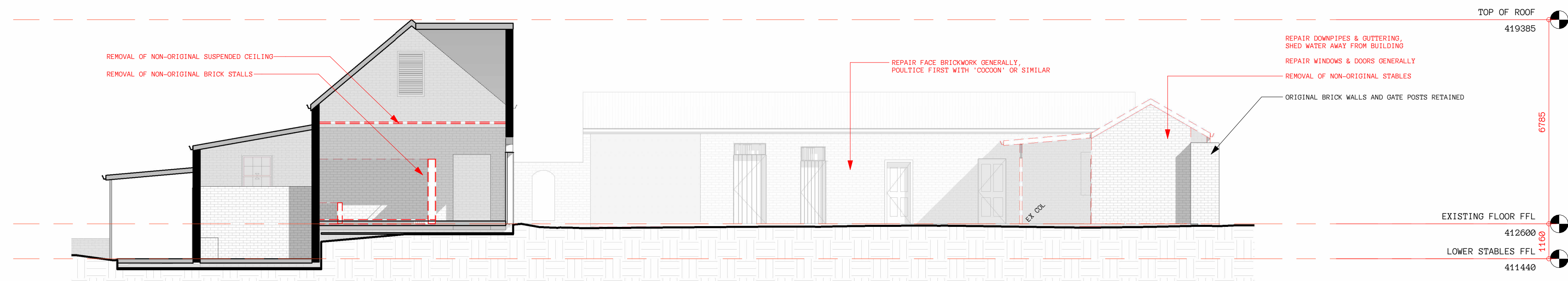
01



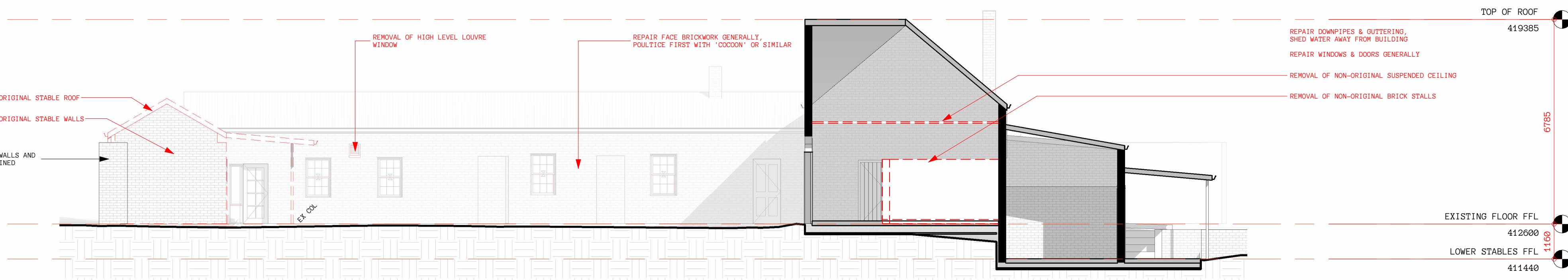
1 DA_STAGE 01 REMOVALS_COURTYARD EAST SIDE
1 : 100



2 DA_STAGE 01 REMOVALS_COURTYARD WEST SIDE
1 : 100



3 DA_STAGE 01 REMOVALS_COURTYARD NORTH SIDE
1 : 100



4 DA_STAGE 01 REMOVALS_COURTYARD SOUTH SIDE
1 : 100



DA SUBMISSION



CAMERON ANDERSON ARCHITECTS
ABN 78385853147

5 Lovejoy St, MUDGEE NSW, 2850
PO Box 3, MUDGEE NSW, 2850
p. 02 6372 6698
m. 0409 257 688

info@caarch.com.au
www.caarch.com.au

NSW Nominated Architect
Cameron Anderson 8560

REV	DESCRIPTION	DATE
01	STAGE 01 REMOVALS	11.07.2025

Check all dimensions & site conditions prior to the commencement of any work. The purchase or ordering of any materials, fittings, plant, services or equipment & the preparation of shop drawings and/or the fabrication of any components.

Do not scale off drawings - refer to figured dimensions only. Any discrepancies shall immediately be referred to the Architect for clarification.

All drawings may not be reproduced or distributed without prior permission from the Architect.

Copyright in all drawings and documents prepared by Cameron Anderson Architects & any works executed from those documents remain the property of Cameron Anderson Architects.

GUNTAWANG STABLES
594 GOOLMA ROAD, GULGOONG, NSW 2850
LOT 3 / - / DP 718231

PETER PETHER	
STAGE 01 REMOVALS COURTYARD ELEVATIONS	
PROJECT NUMBER	478
STATUS	DA
DRAWN BY	GT
SCALE	1 : 100 @A1

DRAWING NO.
DA05

01