

GUNTAWANG STABLES

ALTERATIONS & ADDITIONS

594 GOOLMA ROAD, GULGONG, NSW 2850
LOT 3 / - / DP 718231

| DA DRAWING LIST | | | | | | |
|-----------------|--|-----|-------------------|------------|-----------|-----------|
| DWG NO | DWG NAME | REV | DESCRIPTION | DATE | ISSUED BY | ISSUED TO |
| D400 | COVER PAGE | | | | | |
| D401 | STAGE 01 REMOVALS FLOOR PLAN | 01 | STAGE 01 REMOVALS | 09.07.2025 | GT | COUNCIL |
| D402 | STAGE 01 REMOVALS ROOF PLAN | 01 | STAGE 01 REMOVALS | 09.07.2025 | GT | COUNCIL |
| D403 | STAGE 01 REMOVALS ELEVATIONS | 01 | STAGE 01 REMOVALS | 09.07.2025 | GT | COUNCIL |
| D404 | STAGE 01 REMOVALS COURTYARD ELEVATIONS | 01 | STAGE 01 REMOVALS | 09.07.2025 | GT | COUNCIL |



AERIAL IMAGE, NTS

SOURCE: maps.six.nsw.gov.au



AERIAL PHOTO, NTS



AERIAL PHOTO, NTS

DA SUBMISSION



CAMERON ANDERSON ARCHITECTS
ABN 78385853147

5 Lovejoy St., MUDGEE NSW, 2850
PO Box 3, MUDGEE NSW, 2850
p. 02 6372 6690
m. 0409 257 688

info@caarch.com.au
www.caarch.com.au

NSW Nominated Architect
Cameron Anderson 8560

| REV | DESCRIPTION | DATE |
|-----|-------------------|------------|
| 01 | STAGE 01 REMOVALS | 09.07.2025 |

Check all dimensions & site conditions prior to the commencement of any work. the purchase or ordering of any materials, fittings, plant, services or equipment & the preparation of shop drawings and/or the fabrication of any components.

Do not scale off drawings - refer to figured dimensions only. Any discrepancies shall immediately be referred to the Architect for clarification.

All drawings may not be reproduced or distributed without prior permission from the Architect.

Copyright in all drawings and documents prepared by Cameron Anderson Architects & any works executed from those documents remain the property of Cameron Anderson Architects.

GUNTAWANG STABLES

594 GOOLMA ROAD, GULGONG, NSW 2850
LOT 3 / - / DP 718231

PETER PETHER

COVER PAGE

PROJECT NUMBER 478

STATUS DA

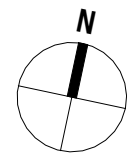
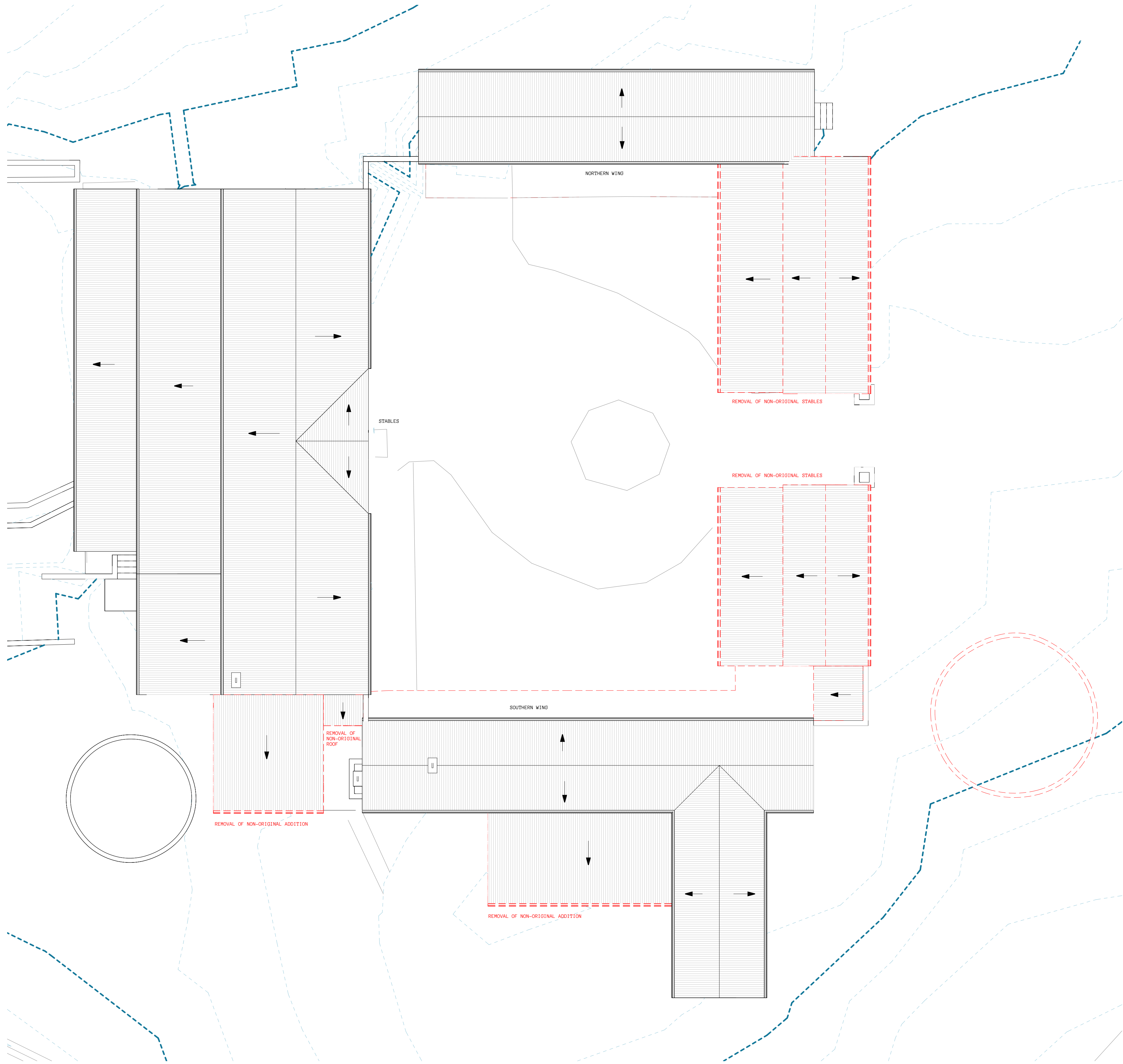
DRAWN BY GT

SCALE @A1

DRAWING NO.

D400

01



DA SUBMISSION



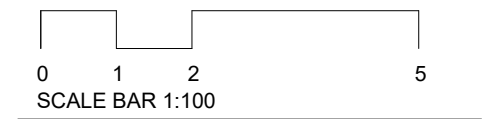
CAMERON ANDERSON ARCHITECTS
ABN 78385853147

5 Lovejoy St., MUDGEE NSW, 2850
PO Box 3, MUDGEE NSW, 2850
p. 02 6372 6690
m. 0409 257 688

info@caarch.com.au
www.caarch.com.au

NSW Nominated Architect
Cameron Anderson 8560

| REV | DESCRIPTION | DATE |
|-----|-------------------|------------|
| 01 | STAGE 01 REMOVALS | 09.07.2025 |



Check all dimensions & site conditions prior to the commencement of any work. The purchase or ordering of any materials, fittings, plant, services or equipment & the preparation of shop drawings and/or the fabrication of any components.

Do not scale off drawings - refer to figured dimensions only. Any discrepancies shall immediately be referred to the Architect for clarification.

All drawings may not be reproduced or distributed without prior permission from the Architect.

Copyright in all drawings and documents prepared by Cameron Anderson Architects & any works executed from those documents remain the property of Cameron Anderson Architects.

GUNTAWANG STABLES
594 GOOLMA ROAD, GULGOONG, NSW 2850
LOT 3 / - / DP 718231

PETER PETHER

STAGE 01 REMOVALS ROOF PLAN

PROJECT NUMBER 478

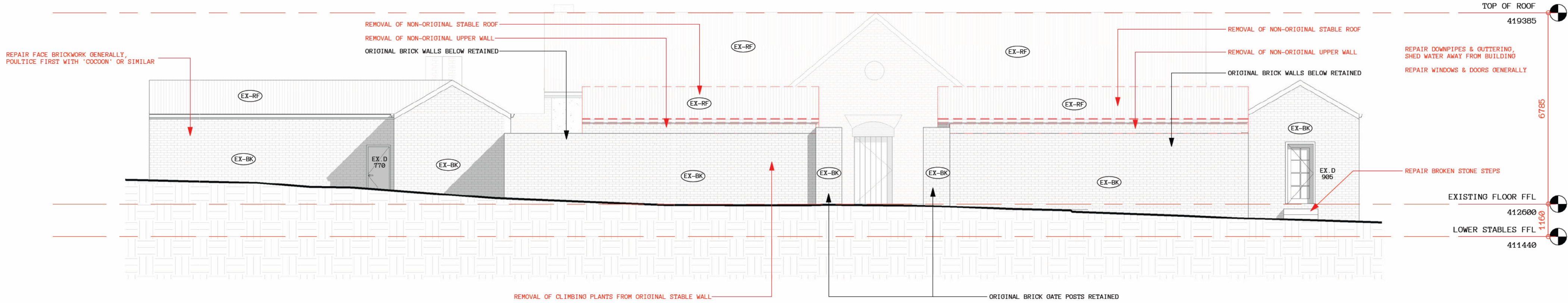
STATUS DA

DRAWN BY GT

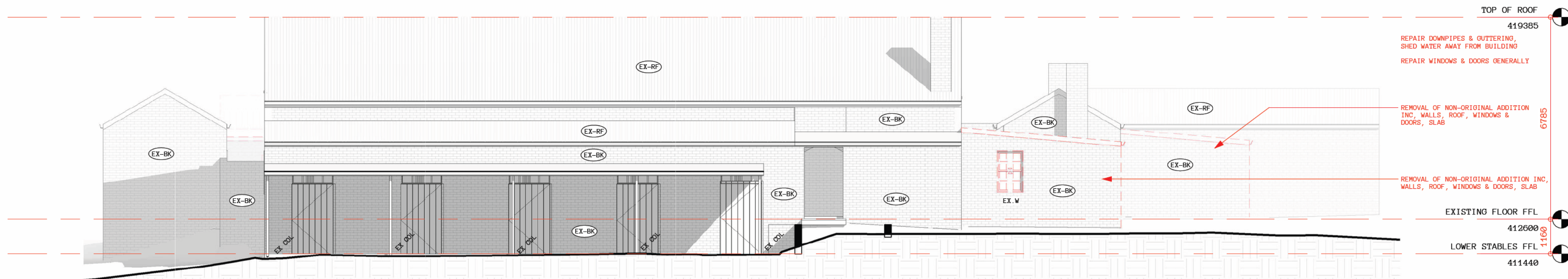
SCALE 1 : 100 @A1

DRAWING NO.

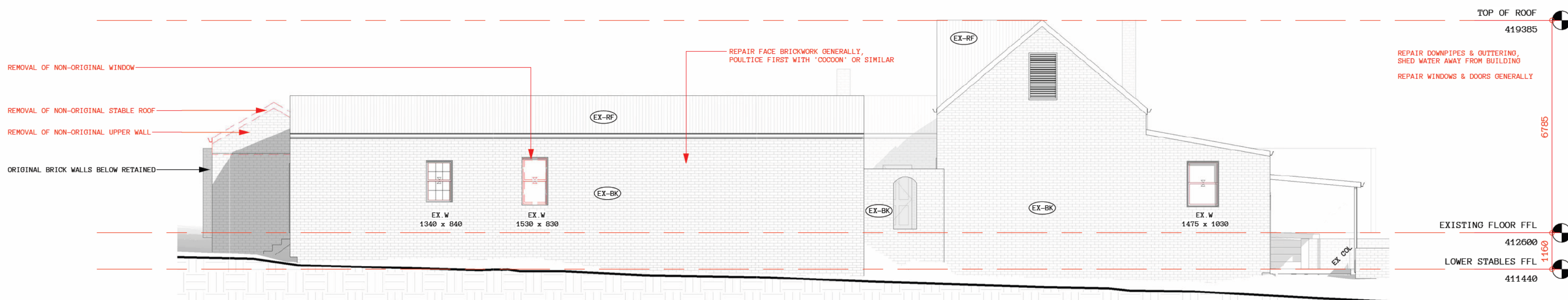
DA02 01



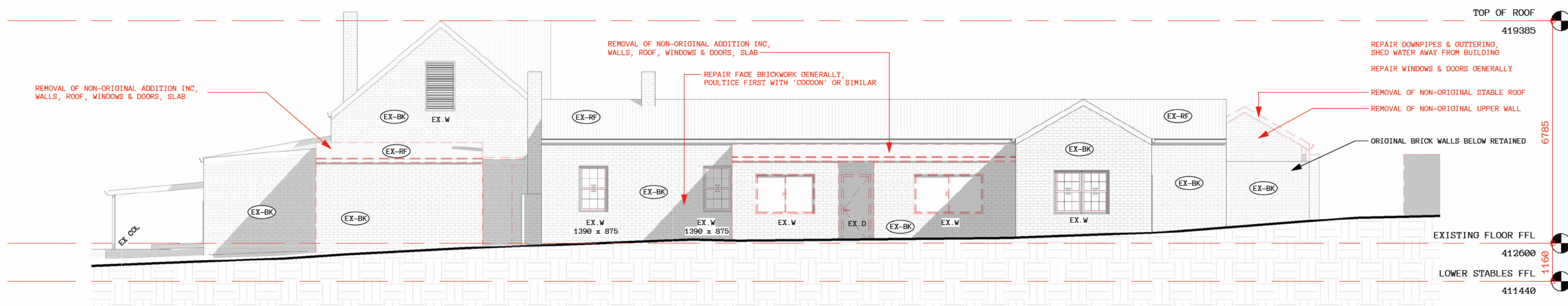
1
DA03
DA_STAGE 01 REMOVALS_EAST ELEVATION
1 : 100



2
DA03
DA_STAGE 01 REMOVALS_WEST ELEVATION
1 : 100



3
DA03
DA_STAGE 01 REMOVALS_NORTH ELEVATION
1 : 100



4
DA03
DA_STAGE 01 REMOVALS_SOUTH ELEVATION
1 : 100



DA SUBMISSION



CAMERON ANDERSON ARCHITECTS
ABN 78385853147

5 Lovejoy St., MUDGEE NSW, 2850
PO Box 3, MUDGEE NSW, 2850
p. 02 6372 6698
m. 0409 257 658

info@caasarch.com.au
www.caasarch.com.au

NSW Nominated Architect
Cameron Anderson 8560

| REV | DESCRIPTION | DATE |
|-----|-------------------|------------|
| 01 | STAGE 01 REMOVALS | 00.07.2025 |

Check all dimensions & site conditions prior to the commencement of any work. The purchase or ordering of any materials, fittings, plant, services or equipment & the preparation of shop drawings and/or the fabrication of any components.

Do not scale off drawings – refer to figured dimensions only. Any discrepancies shall immediately be referred to the Architect for clarification.

All drawings may not be reproduced or distributed without prior permission from the Architect.

Copyright in all drawings and documents prepared by Cameron Anderson Architects & any works excluded from those documents remain the property of Cameron Anderson Architects.

GUNTAWANG STABLES

594 GOOLMA ROAD, GULGONG, NSW 2850
LOT 3 / - / DP 718231

PETER PETHER

STAGE 01 REMOVALS ELEVATIONS

PROJECT NUMBER 478

STATUS DA

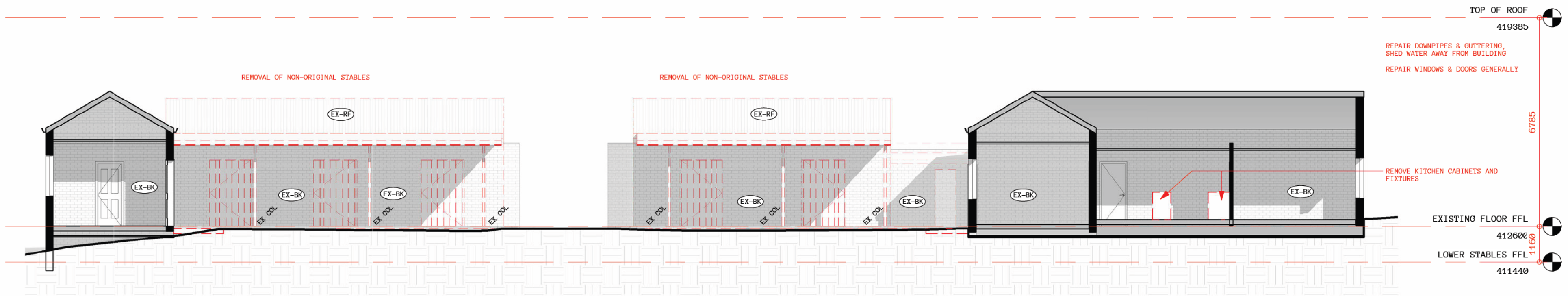
DRAWN BY OT

SCALE 1 : 100 @A1

DRAWING NO.

DA03

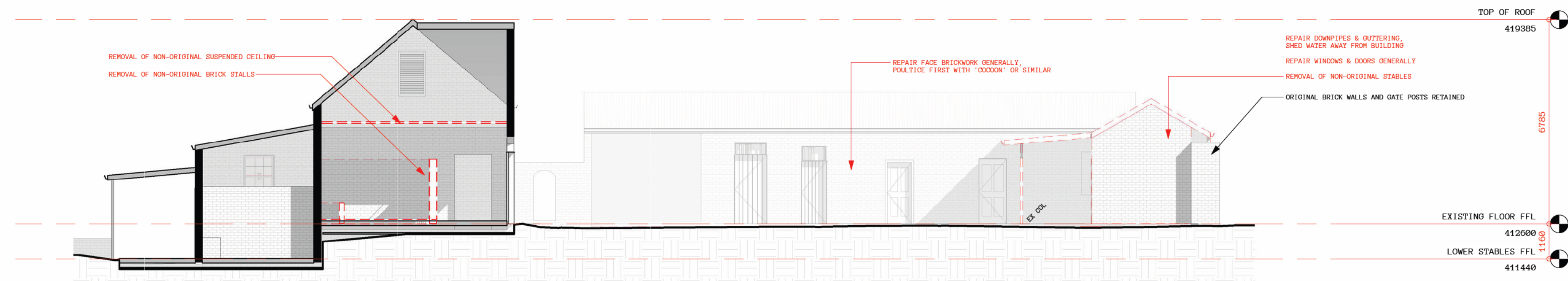
01



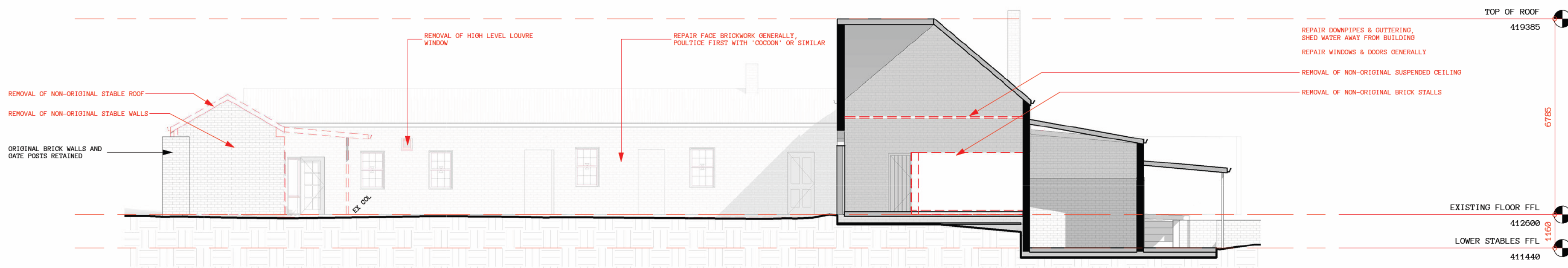
1 DA_STAGE 01 REMOVALS_COURTYARD EAST SIDE
1 : 100



2 DA_STAGE 01 REMOVALS_COURTYARD WEST SIDE
1 : 100



3 DA_STAGE 01 REMOVALS_COURTYARD NORTH SIDE
1 : 100



4 DA_STAGE 01 REMOVALS_COURTYARD SOUTH SIDE
1 : 100



DA SUBMISSION



CAMERON ANDERSON ARCHITECTS
ABN 78385853147

5 Lovejoy St, MUDGEE NSW, 2850
PO Box 3, MUDGEE NSW, 2850
p. 02 6372 6698
m. 0409 257 688

info@caasarch.com.au
www.caasarch.com.au

NSW Nominated Architect
Cameron Anderson 8560

| REV | DESCRIPTION | DATE |
|-----|-------------------|------------|
| 01 | STAGE 01 REMOVALS | 06.07.2025 |

Check all dimensions & site conditions prior to the commencement of any work. The purchase or ordering of any materials, fittings, plant, services or equipment & the preparation of shop drawings and/or the fabrication of any components.

Do not scale off drawings - refer to figured dimensions only. Any discrepancies shall immediately be referred to the Architect for clarification.

All drawings may not be reproduced or distributed without prior permission from the Architect.

Copyright in all drawings and documents prepared by Cameron Anderson Architects & any works excluded from those documents remain the property of Cameron Anderson Architects.

GUNTAWANG STABLES
594 GOOLMA ROAD, GULGOONG, NSW 2850
LOT 3 / - / DP 718231

PETER PETHER
STAGE 01 REMOVALS COURTYARD
ELEVATIONS

PROJECT NUMBER 478

STATUS DA

DRAWN BY OT

SCALE 1 : 100 @A1

DRAWING NO.

DA04 01