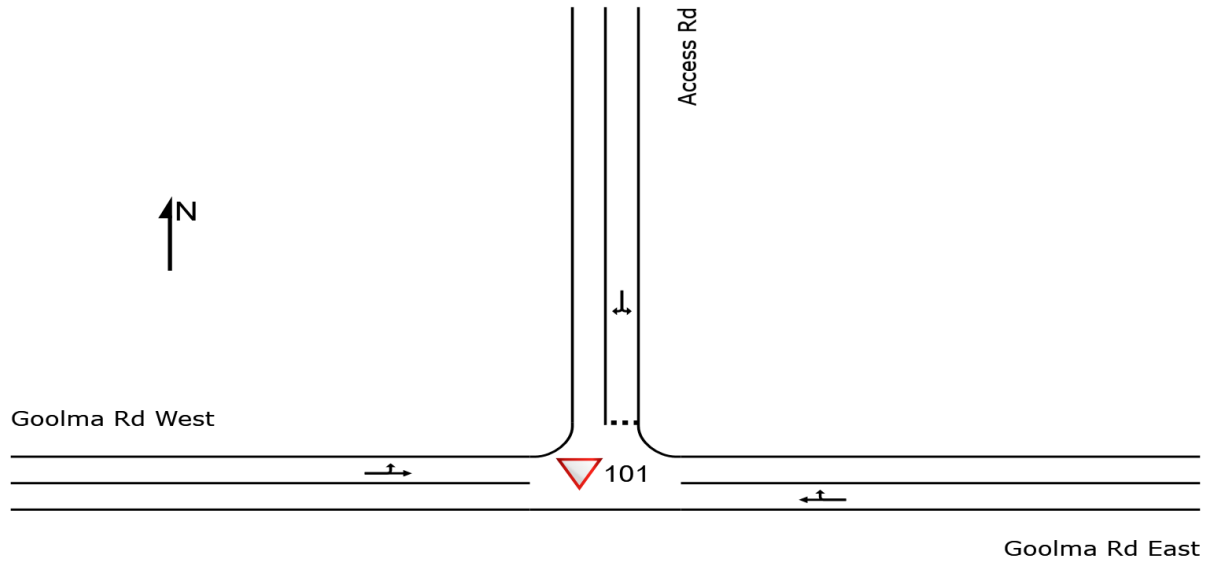


SITE LAYOUT

▽ Site: 101 [Quarry Access Intersection - 2024 Existing AM
(Site Folder: General)]

New Site
Site Category: (None)
Give-Way (Two-Way)

Layout pictures are schematic functional drawings reflecting input data. They are not design drawings.



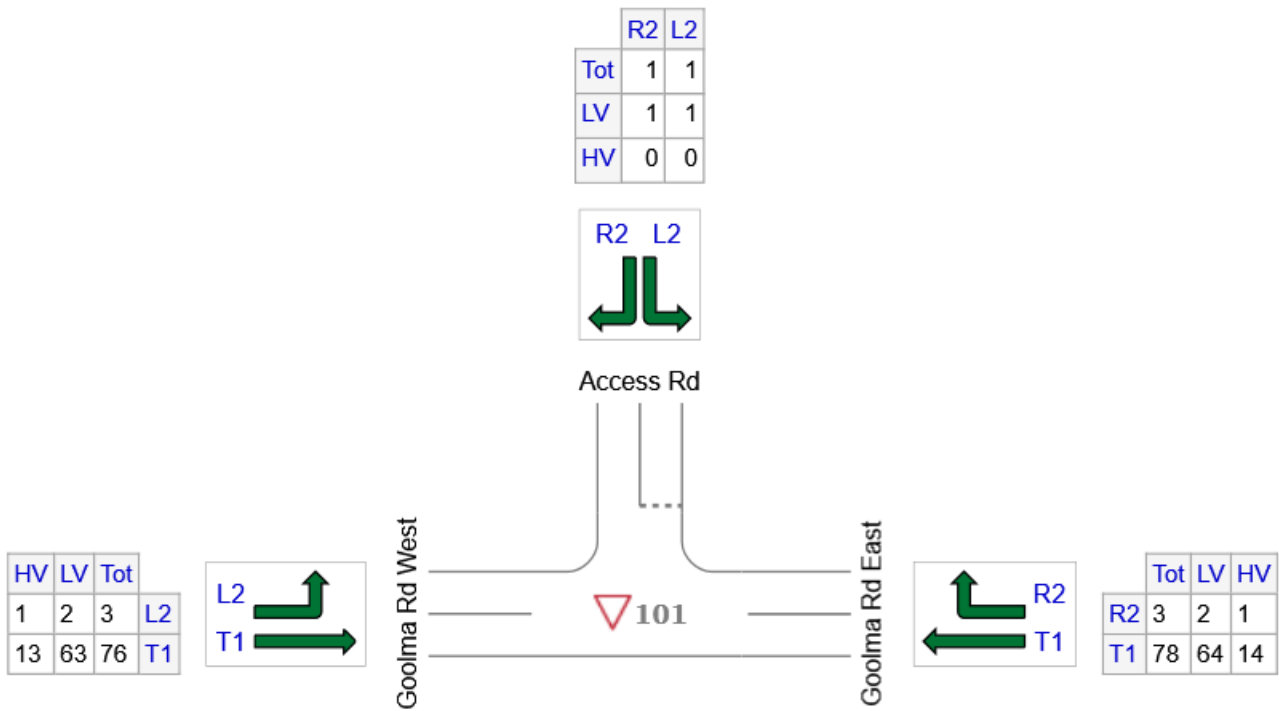
INPUT VOLUMES

Vehicles and pedestrians per 60 minutes

▽ Site: 101 [Quarry Access Intersection - 2024 Existing AM
(Site Folder: General)]

New Site
Site Category: (None)
Give-Way (Two-Way)

Volume Display Method: Total and Veh



	All MCs	Light Vehicles (LV)	Heavy Vehicles (HV)
E: Goolma Rd East	81	66	15
N: Access Rd	2	2	0
W: Goolma Rd West	79	65	14
Total	162	133	29

DELAY - AVERAGE (CONTROL)

Average control delay per vehicle, or average pedestrian delay (seconds)

▽ Site: 101 [Quarry Access Intersection - 2024 Existing AM
(Site Folder: General)]

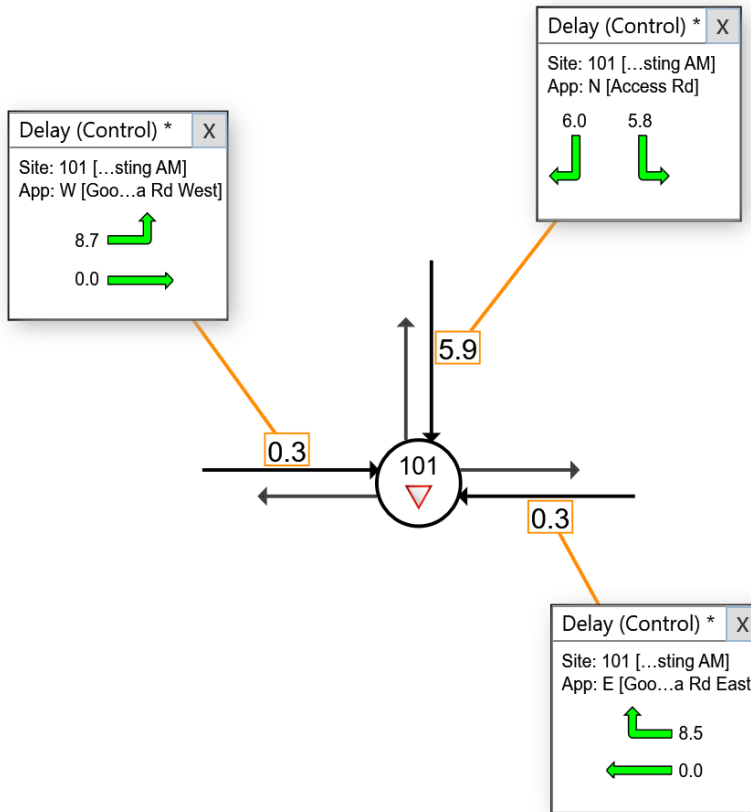
Output produced by SIDRA INTERSECTION Version: 9.1.4.221

New Site
Site Category: (None)
Give-Way (Two-Way)

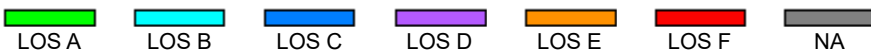
Use the button below to open or close all popup boxes. Click value labels to open selected ones.
Click and drag popup boxes to move to preferred positions.

Close All Popups

All Movement Classes (*)



Colour code based on Level of Service



NA: The movement only runs in short lanes and these are not included in determining Queue Storage Ratio, or the movement has zero volume for the selected Movement Class.

Site Level of Service (LOS) Method: Delay (SIDRA). Site LOS Method is specified in the Parameter Settings dialog (Options tab).
Delay Model: SIDRA Standard (Control Delay: Geometric Delay is included).

Approach values are flow-weighted average values for vehicle movements (pedestrian delays not included).

QUEUE DISTANCE (PERCENTILE)

Largest 95% Back of Queue Distance for any lane used by the vehicle movement (metres)

▼ Site: 101 [Quarry Access Intersection - 2024 Existing AM
(Site Folder: General)]

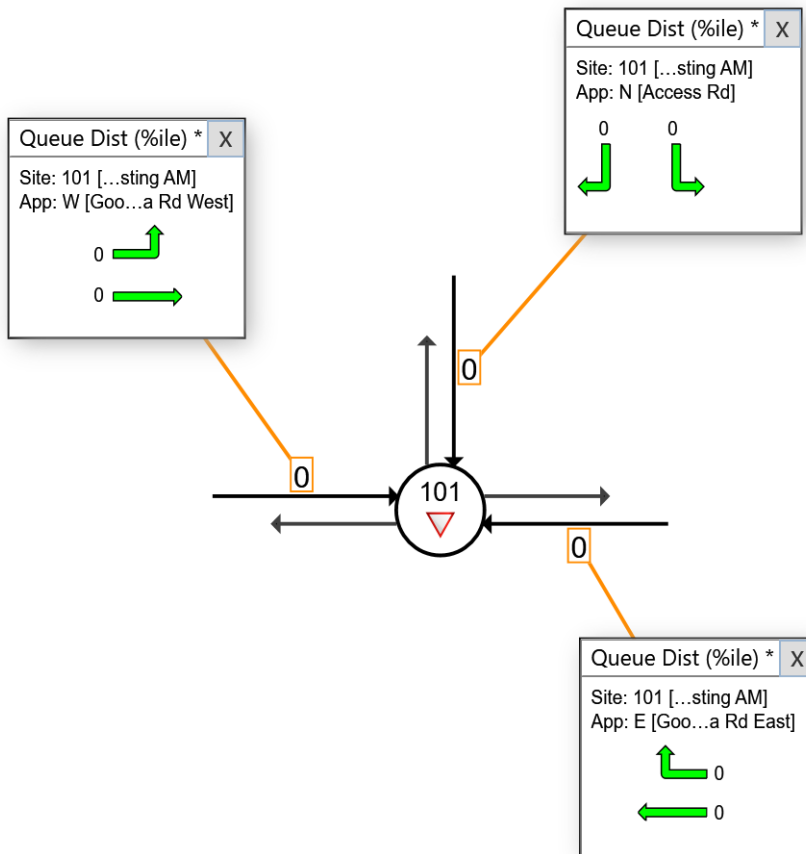
Output produced by SIDRA INTERSECTION Version: 9.1.4.221

New Site
Site Category: (None)
Give-Way (Two-Way)

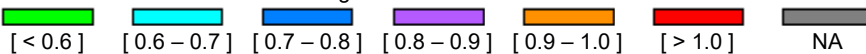
Use the button below to open or close all popup boxes. Click value labels to open selected ones.
Click and drag popup boxes to move to preferred positions.

Close All Popups

All Movement Classes (*)



Colour code based on Queue Storage Ratio



NA: The movement only runs in short lanes and these are not included in determining Queue Storage Ratio, or the movement has zero volume for the selected Movement Class.

Queue Model: SIDRA queue estimation methods are used for Back of Queue and Queue at Start of Green.

LEVEL OF SERVICE

Movement Level of Service

▽ Site: 101 [Quarry Access Intersection - 2024 Existing AM
(Site Folder: General)]

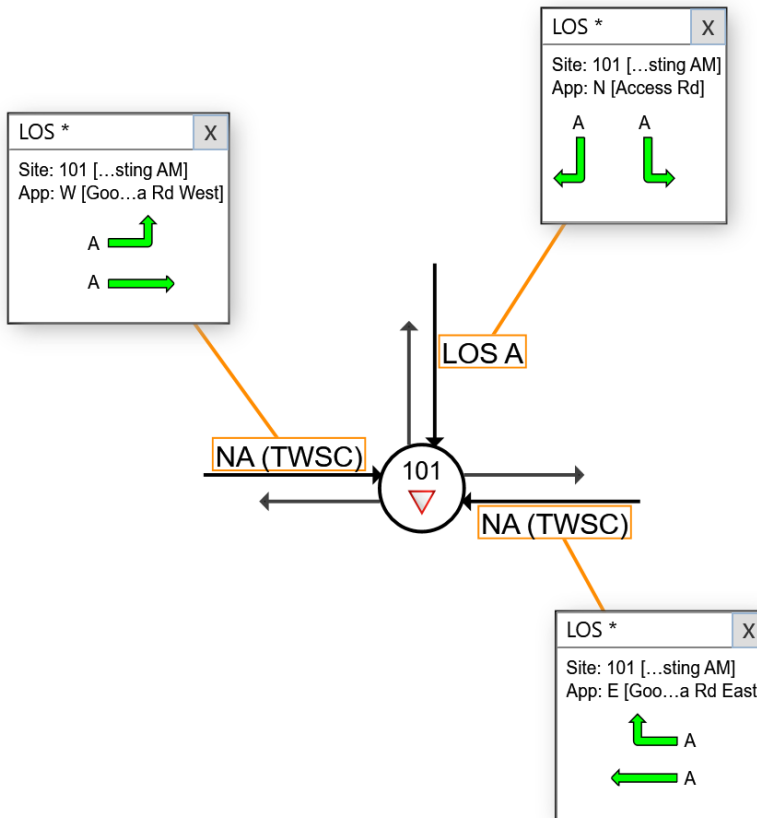
Output produced by SIDRA INTERSECTION Version: 9.1.4.221

New Site
Site Category: (None)
Give-Way (Two-Way)

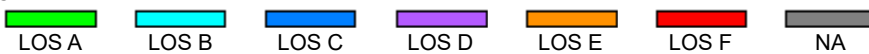
Use the button below to open or close all popup boxes. Click value labels to open selected ones.
Click and drag popup boxes to move to preferred positions.

Close All Popups

All Movement Classes (*)



Colour code based on Level of Service



NA: The movement only runs in short lanes and these are not included in determining Queue Storage Ratio, or the movement has zero volume for the selected Movement Class.

NA (TWSC): Level of Service is not defined for major road approaches or the intersection as a whole for Two-Way Sign Control (HCM LOS rule).

Site Level of Service (LOS) Method: Delay (SIDRA). Site LOS Method is specified in the Parameter Settings dialog (Options tab).
Delay Model: SIDRA Standard (Control Delay: Geometric Delay is included).

DEGREE OF SATURATION

Ratio of Arrival Flow to Capacity, v/c ratio per lane

▽ Site: 101 [Quarry Access Intersection - 2024 Existing AM
(Site Folder: General)]

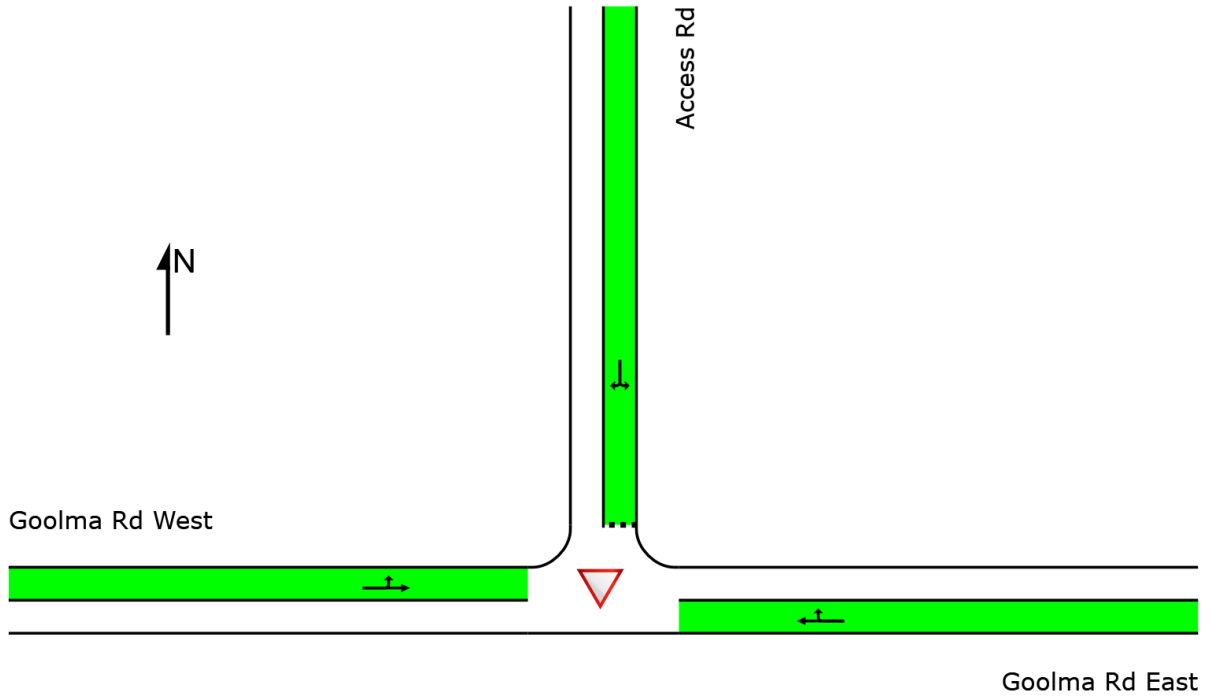
Output produced by SIDRA INTERSECTION Version: 9.1.4.221

New Site

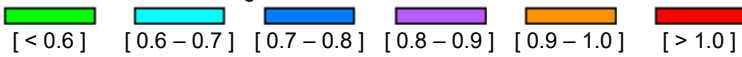
Site Category: (None)

Give-Way (Two-Way)

	Approaches			Intersection
	East	North	West	
Degree of Saturation	0.05	0.00	0.04	0.05



Colour code based on Degree of Saturation



SIDRA INTERSECTION 9.1 | Copyright © 2000-2023 Akcelik and Associates Pty Ltd | sidrasolutions.com

Organisation: PREMISE GROUP SERVICES PTY LTD | Licence: PLUS / 1PC | Processed: Friday, 16 February 2024 8:11:00 AM

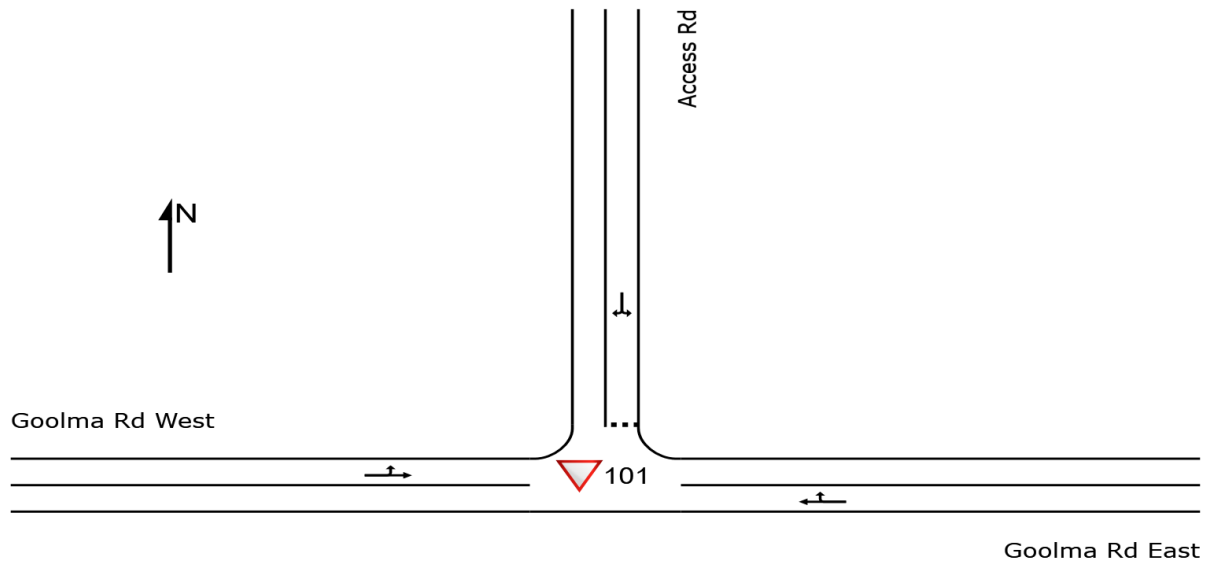
Project: C:\12dS\data\12dSynergy\223256 DA 2152 Goolma Rd_15797\Internal\SIDRA\223256_ACCESS INTERSECTION.sip9

SITE LAYOUT

▽ Site: 101 [Quarry Access Intersection - 2024 Existing PM
(Site Folder: General)]

New Site
Site Category: (None)
Give-Way (Two-Way)

Layout pictures are schematic functional drawings reflecting input data. They are not design drawings.



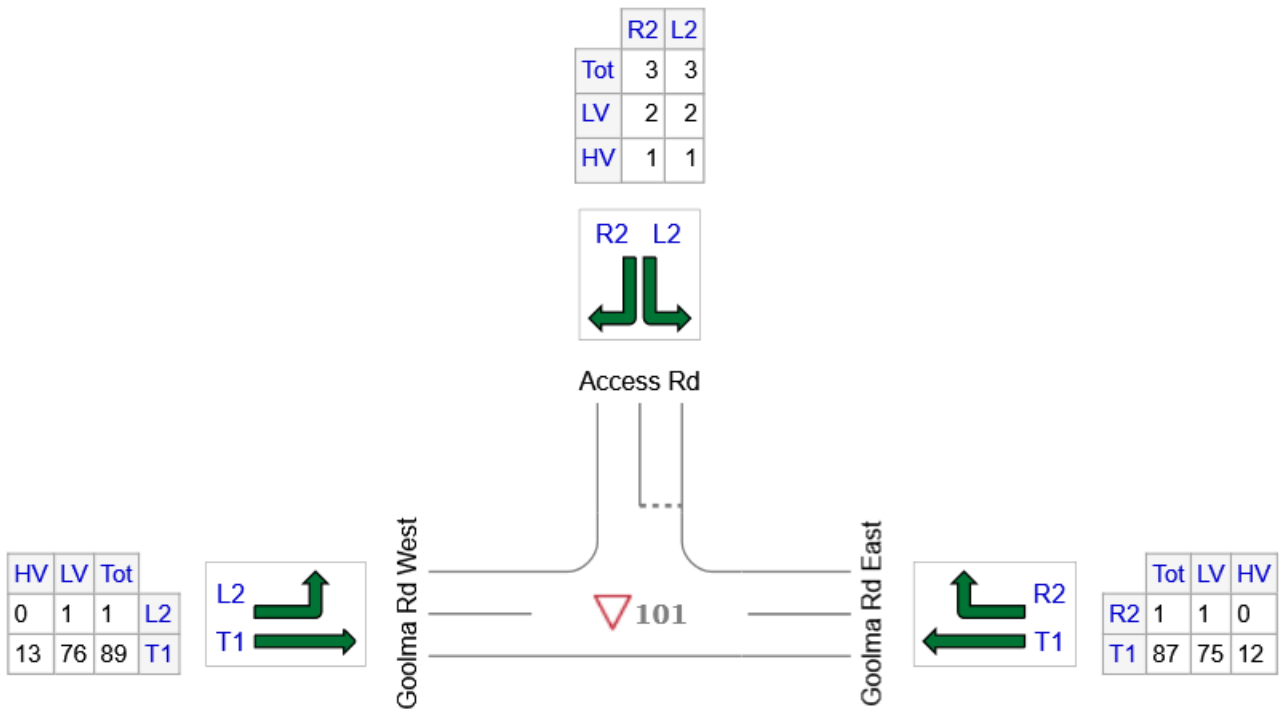
INPUT VOLUMES

Vehicles and pedestrians per 60 minutes

▽ Site: 101 [Quarry Access Intersection - 2024 Existing PM
(Site Folder: General)]

New Site
Site Category: (None)
Give-Way (Two-Way)

Volume Display Method: Total and Veh



	All MCs	Light Vehicles (LV)	Heavy Vehicles (HV)
E: Goolma Rd East	88	76	12
N: Access Rd	6	4	2
W: Goolma Rd West	90	77	13
Total	184	157	27

DELAY - AVERAGE (CONTROL)

Average control delay per vehicle, or average pedestrian delay (seconds)

▽ Site: 101 [Quarry Access Intersection - 2024 Existing PM
(Site Folder: General)]

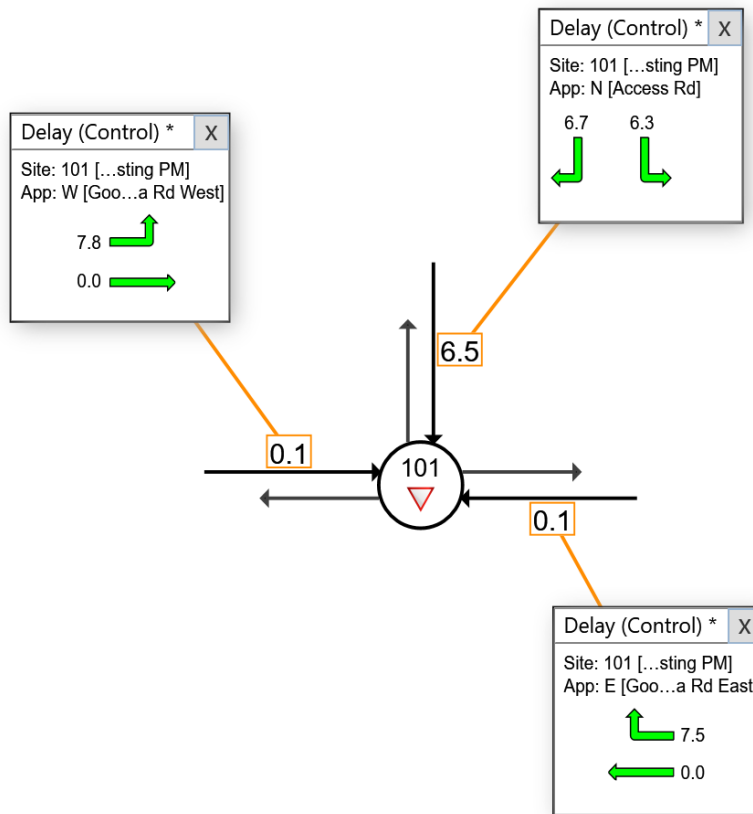
Output produced by SIDRA INTERSECTION Version: 9.1.4.221

New Site
Site Category: (None)
Give-Way (Two-Way)

Use the button below to open or close all popup boxes. Click value labels to open selected ones.
Click and drag popup boxes to move to preferred positions.

Close All Popups

All Movement Classes (*)



Colour code based on Level of Service



NA: The movement only runs in short lanes and these are not included in determining Queue Storage Ratio, or the movement has zero volume for the selected Movement Class.

Site Level of Service (LOS) Method: Delay (SIDRA). Site LOS Method is specified in the Parameter Settings dialog (Options tab).
Delay Model: SIDRA Standard (Control Delay: Geometric Delay is included).

Approach values are flow-weighted average values for vehicle movements (pedestrian delays not included).

QUEUE DISTANCE (PERCENTILE)

Largest 95% Back of Queue Distance for any lane used by the vehicle movement (metres)

▼ Site: 101 [Quarry Access Intersection - 2024 Existing PM (Site Folder: General)]

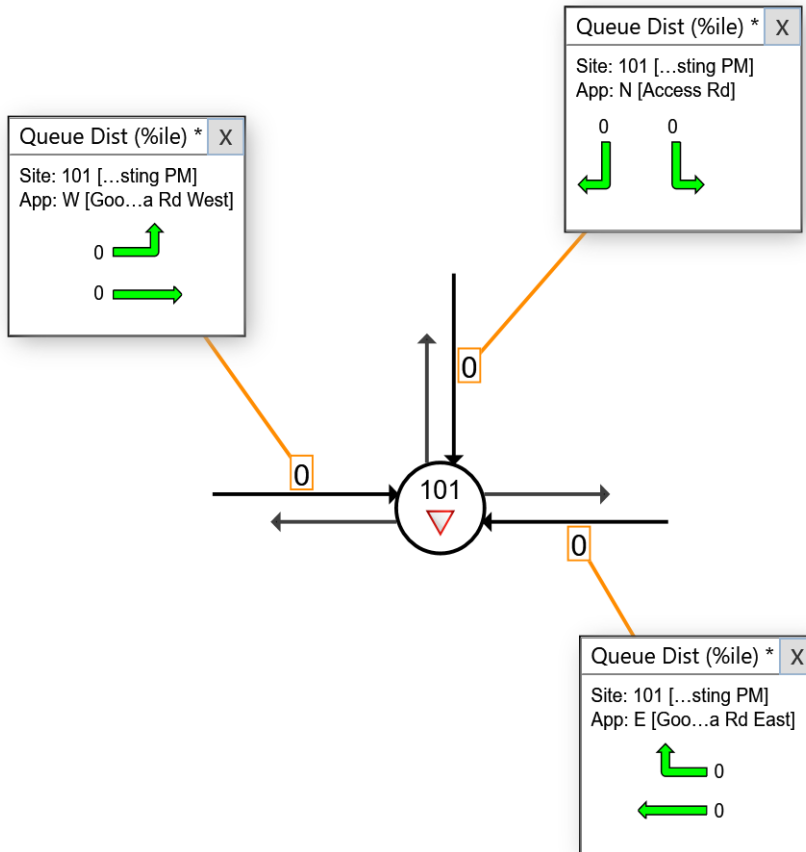
Output produced by SIDRA INTERSECTION Version: 9.1.4.221

New Site
 Site Category: (None)
 Give-Way (Two-Way)

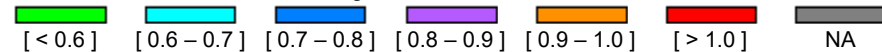
Use the button below to open or close all popup boxes. Click value labels to open selected ones. Click and drag popup boxes to move to preferred positions.

Close All Popups

All Movement Classes (*)



Colour code based on Queue Storage Ratio



NA: The movement only runs in short lanes and these are not included in determining Queue Storage Ratio, or the movement has zero volume for the selected Movement Class.

Queue Model: SIDRA queue estimation methods are used for Back of Queue and Queue at Start of Green.

LEVEL OF SERVICE

Movement Level of Service

▽ Site: 101 [Quarry Access Intersection - 2024 Existing PM
(Site Folder: General)]

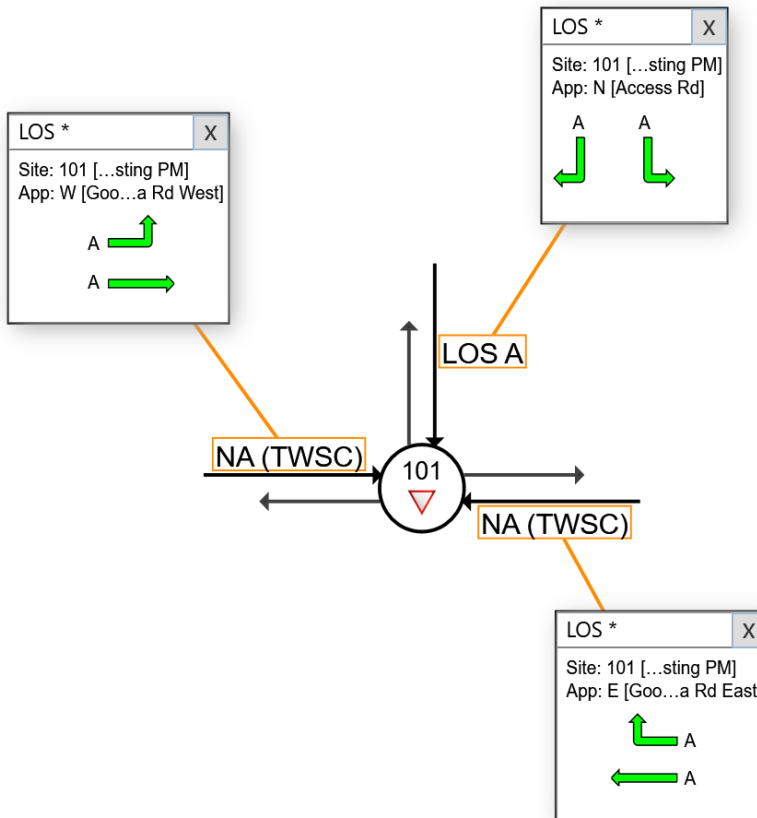
Output produced by SIDRA INTERSECTION Version: 9.1.4.221

New Site
Site Category: (None)
Give-Way (Two-Way)

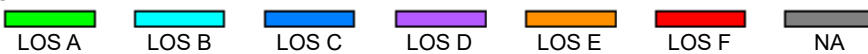
Use the button below to open or close all popup boxes. Click value labels to open selected ones.
Click and drag popup boxes to move to preferred positions.

Close All Popups

All Movement Classes (*)



Colour code based on Level of Service



NA: The movement only runs in short lanes and these are not included in determining Queue Storage Ratio, or the movement has zero volume for the selected Movement Class.

NA (TWSC): Level of Service is not defined for major road approaches or the intersection as a whole for Two-Way Sign Control (HCM LOS rule).

Site Level of Service (LOS) Method: Delay (SIDRA). Site LOS Method is specified in the Parameter Settings dialog (Options tab).
Delay Model: SIDRA Standard (Control Delay: Geometric Delay is included).

DEGREE OF SATURATION

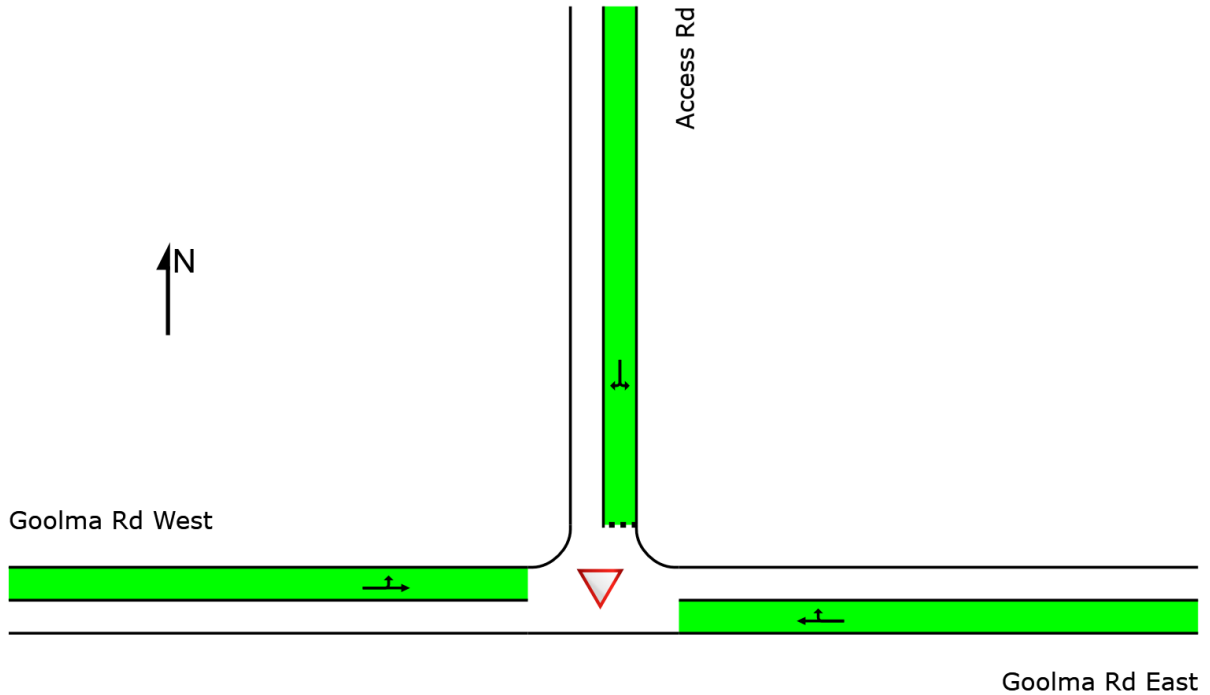
Ratio of Arrival Flow to Capacity, v/c ratio per lane

▽ Site: 101 [Quarry Access Intersection - 2024 Existing PM
(Site Folder: General)]

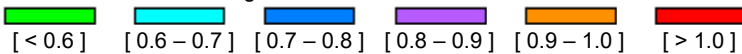
Output produced by SIDRA INTERSECTION Version: 9.1.4.221

New Site
Site Category: (None)
Give-Way (Two-Way)

	Approaches			Intersection
	East	North	West	
Degree of Saturation	0.05	0.01	0.05	0.05



Colour code based on Degree of Saturation

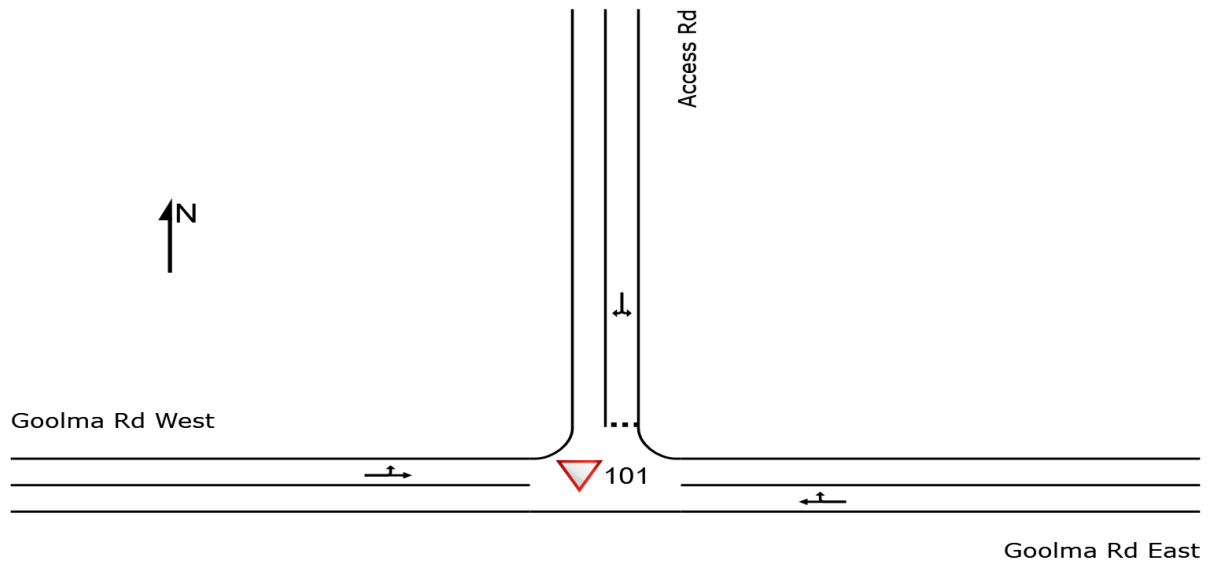


SITE LAYOUT

▽ Site: 101 [Quarry Access Intersection - 2034 Post
Development AM (Site Folder: General)]

New Site
Site Category: (None)
Give-Way (Two-Way)

Layout pictures are schematic functional drawings reflecting input data. They are not design drawings.



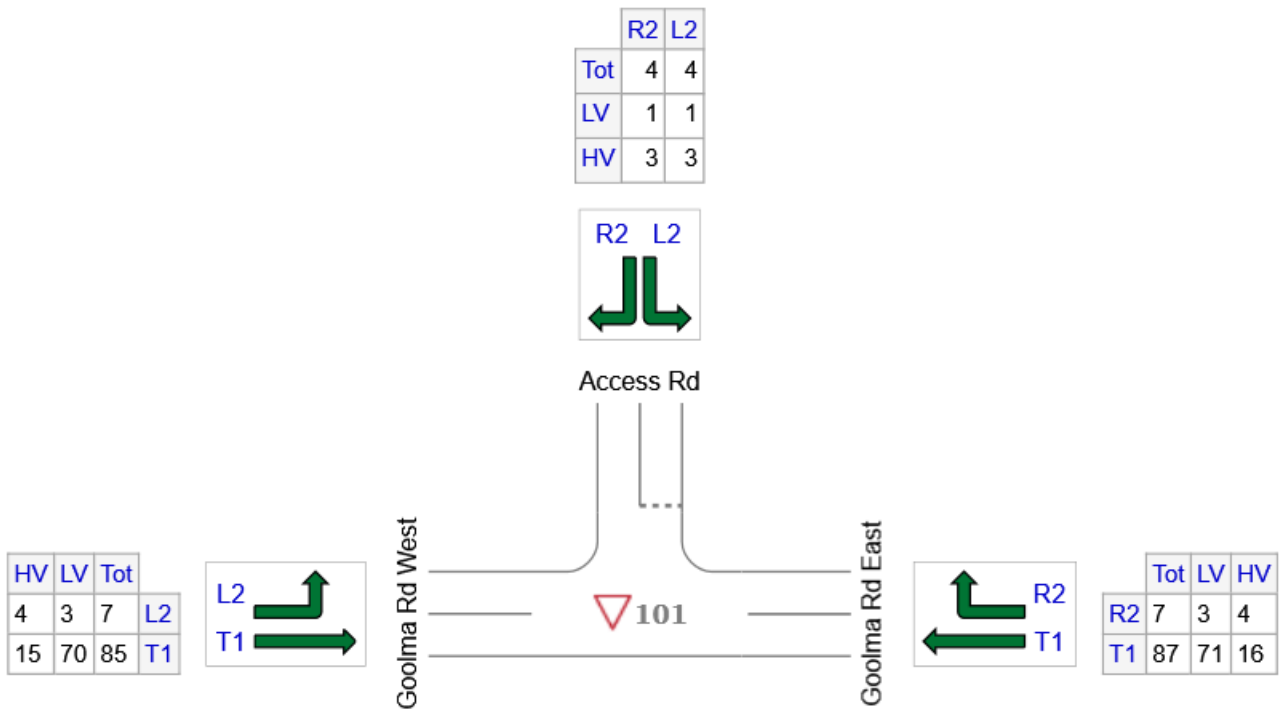
INPUT VOLUMES

Vehicles and pedestrians per 60 minutes

Site: 101 [Quarry Access Intersection - 2034 Post Development AM (Site Folder: General)]

New Site
 Site Category: (None)
 Give-Way (Two-Way)

Volume Display Method: Total and Veh



	All MCs	Light Vehicles (LV)	Heavy Vehicles (HV)
E: Goolma Rd East	94	74	20
N: Access Rd	8	2	6
W: Goolma Rd West	92	73	19
Total	194	149	45

DELAY - AVERAGE (CONTROL)

Average control delay per vehicle, or average pedestrian delay (seconds)

▼ Site: 101 [Quarry Access Intersection - 2034 Post Development AM (Site Folder: General)]

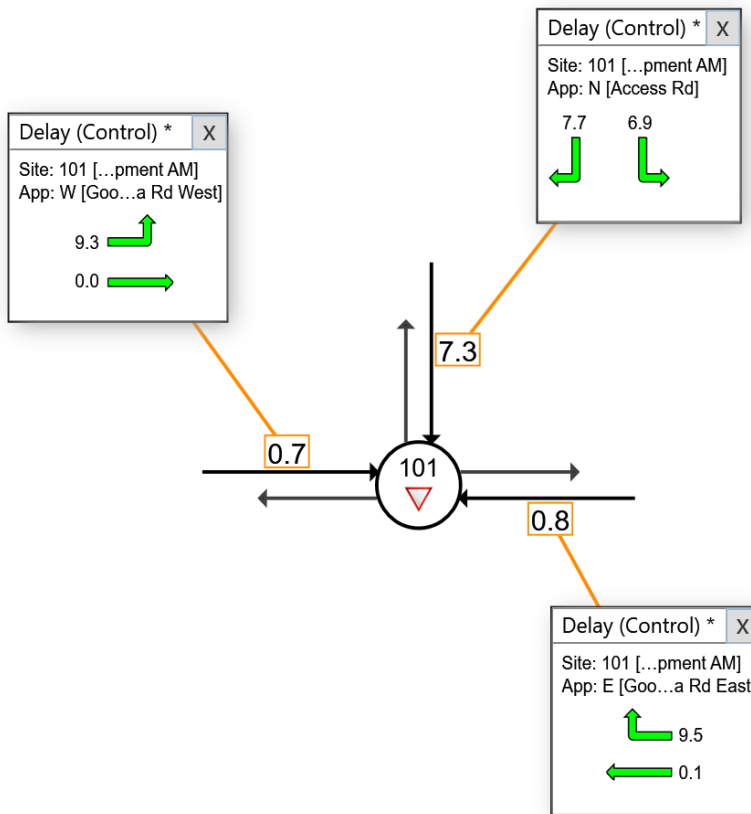
Output produced by SIDRA INTERSECTION Version: 9.1.4.221

New Site
 Site Category: (None)
 Give-Way (Two-Way)

Use the button below to open or close all popup boxes. Click value labels to open selected ones.
 Click and drag popup boxes to move to preferred positions.

Close All Popups

All Movement Classes (*)



Colour code based on Level of Service



NA: The movement only runs in short lanes and these are not included in determining Queue Storage Ratio, or the movement has zero volume for the selected Movement Class.

Site Level of Service (LOS) Method: Delay (SIDRA). Site LOS Method is specified in the Parameter Settings dialog (Options tab). Delay Model: SIDRA Standard (Control Delay: Geometric Delay is included).

Approach values are flow-weighted average values for vehicle movements (pedestrian delays not included).

QUEUE DISTANCE (PERCENTILE)

Largest 95% Back of Queue Distance for any lane used by the vehicle movement (metres)

▽ Site: 101 [Quarry Access Intersection - 2034 Post Development AM (Site Folder: General)]

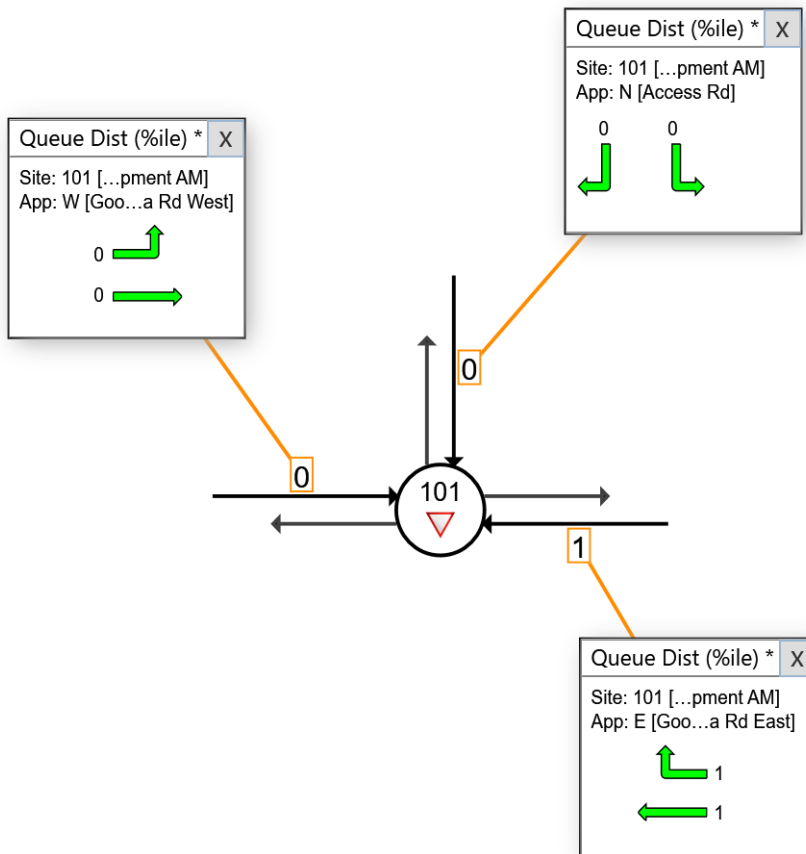
Output produced by SIDRA INTERSECTION Version: 9.1.4.221

New Site
 Site Category: (None)
 Give-Way (Two-Way)

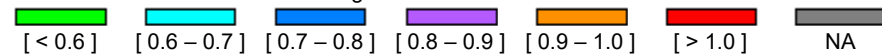
Use the button below to open or close all popup boxes. Click value labels to open selected ones.
 Click and drag popup boxes to move to preferred positions.

Close All Popups

All Movement Classes (*)



Colour code based on Queue Storage Ratio



NA: The movement only runs in short lanes and these are not included in determining Queue Storage Ratio, or the movement has zero volume for the selected Movement Class.

Queue Model: SIDRA queue estimation methods are used for Back of Queue and Queue at Start of Green.

LEVEL OF SERVICE

Movement Level of Service

▽ Site: 101 [Quarry Access Intersection - 2034 Post Development AM (Site Folder: General)]

Output produced by SIDRA INTERSECTION Version: 9.1.4.221

New Site

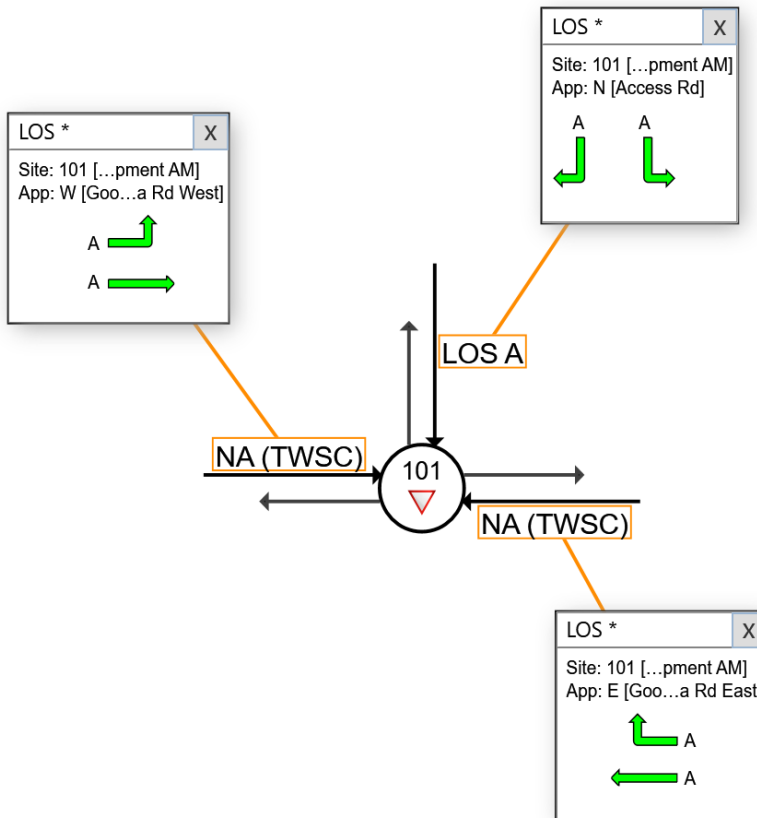
Site Category: (None)

Give-Way (Two-Way)

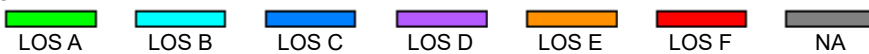
Use the button below to open or close all popup boxes. Click value labels to open selected ones. Click and drag popup boxes to move to preferred positions.

Close All Popups

All Movement Classes (*)



Colour code based on Level of Service



NA: The movement only runs in short lanes and these are not included in determining Queue Storage Ratio, or the movement has zero volume for the selected Movement Class.

NA (TWSC): Level of Service is not defined for major road approaches or the intersection as a whole for Two-Way Sign Control (HCM LOS rule).

Site Level of Service (LOS) Method: Delay (SIDRA). Site LOS Method is specified in the Parameter Settings dialog (Options tab).

Delay Model: SIDRA Standard (Control Delay: Geometric Delay is included).

DEGREE OF SATURATION

Ratio of Arrival Flow to Capacity, v/c ratio per lane

▽ Site: 101 [Quarry Access Intersection - 2034 Post Development AM (Site Folder: General)]

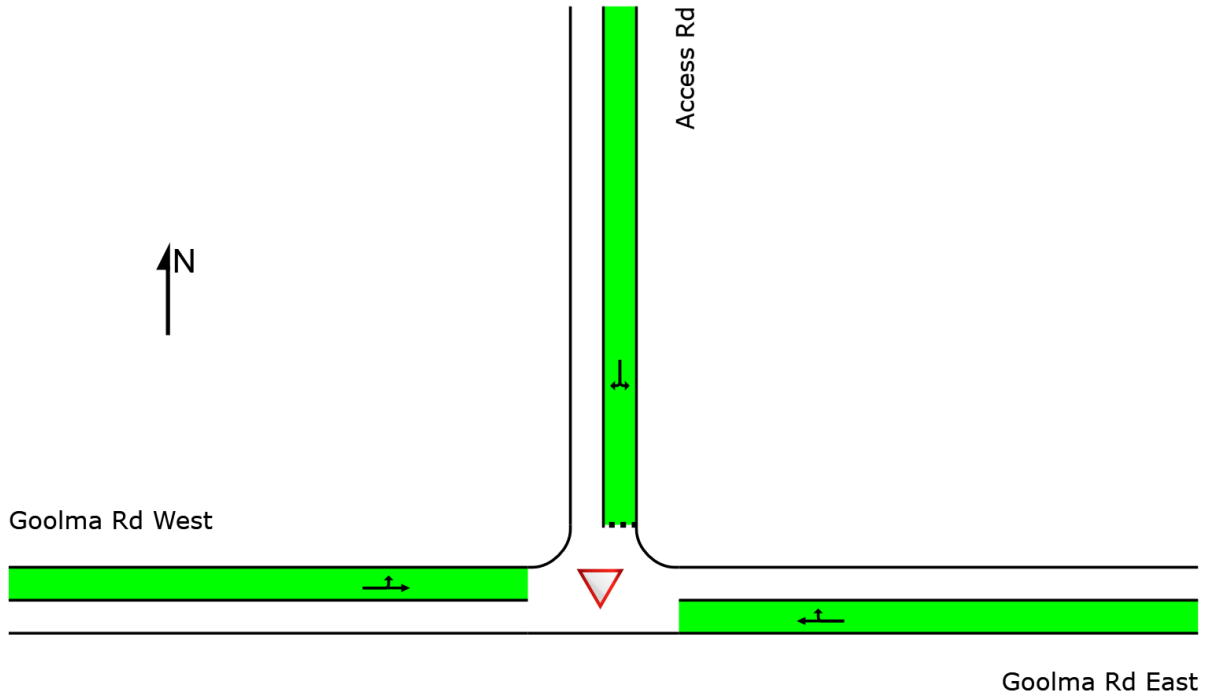
Output produced by SIDRA INTERSECTION Version: 9.1.4.221

New Site

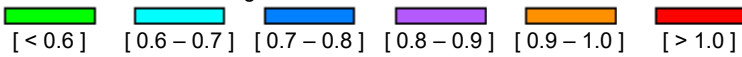
Site Category: (None)

Give-Way (Two-Way)

	Approaches			Intersection
	East	North	West	
Degree of Saturation	0.06	0.01	0.05	0.06



Colour code based on Degree of Saturation



SIDRA INTERSECTION 9.1 | Copyright © 2000-2023 Akcelik and Associates Pty Ltd | sidrasolutions.com

Organisation: PREMISE GROUP SERVICES PTY LTD | Licence: PLUS / 1PC | Processed: Friday, 16 February 2024 8:19:45 AM

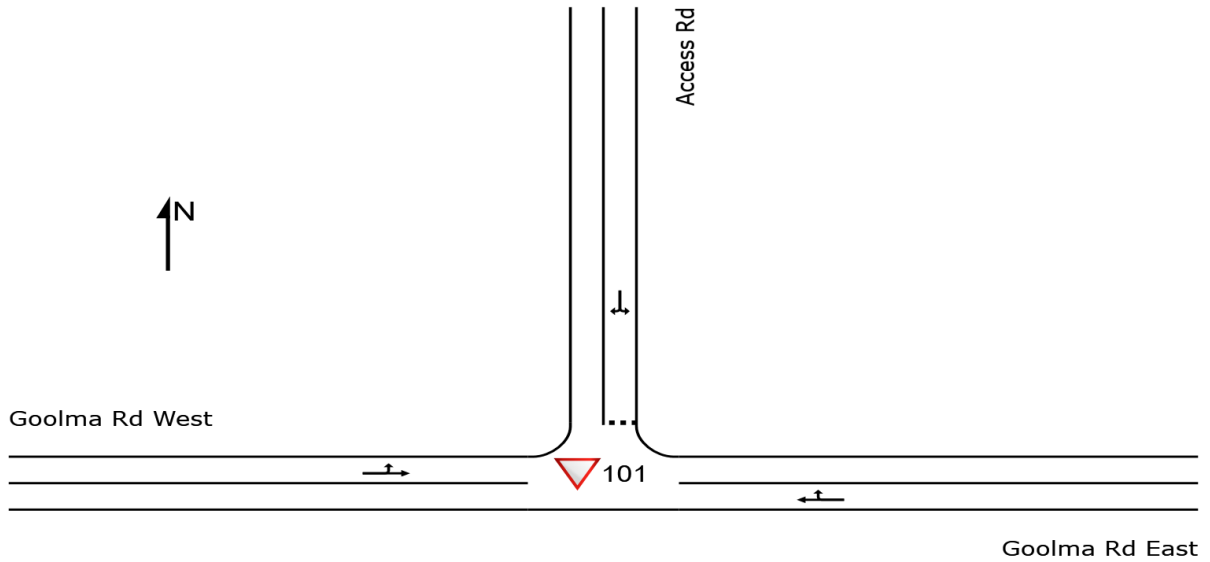
Project: C:\12dS\data\12dSynergy\223256 DA 2152 Goolma Rd_15797\Internal\SIDRA\223256_ACCESS INTERSECTION.sip9

SITE LAYOUT

▽ Site: 101 [Quarry Access Intersection - 2034 Post Development PM (Site Folder: General)]

New Site
Site Category: (None)
Give-Way (Two-Way)

Layout pictures are schematic functional drawings reflecting input data. They are not design drawings.



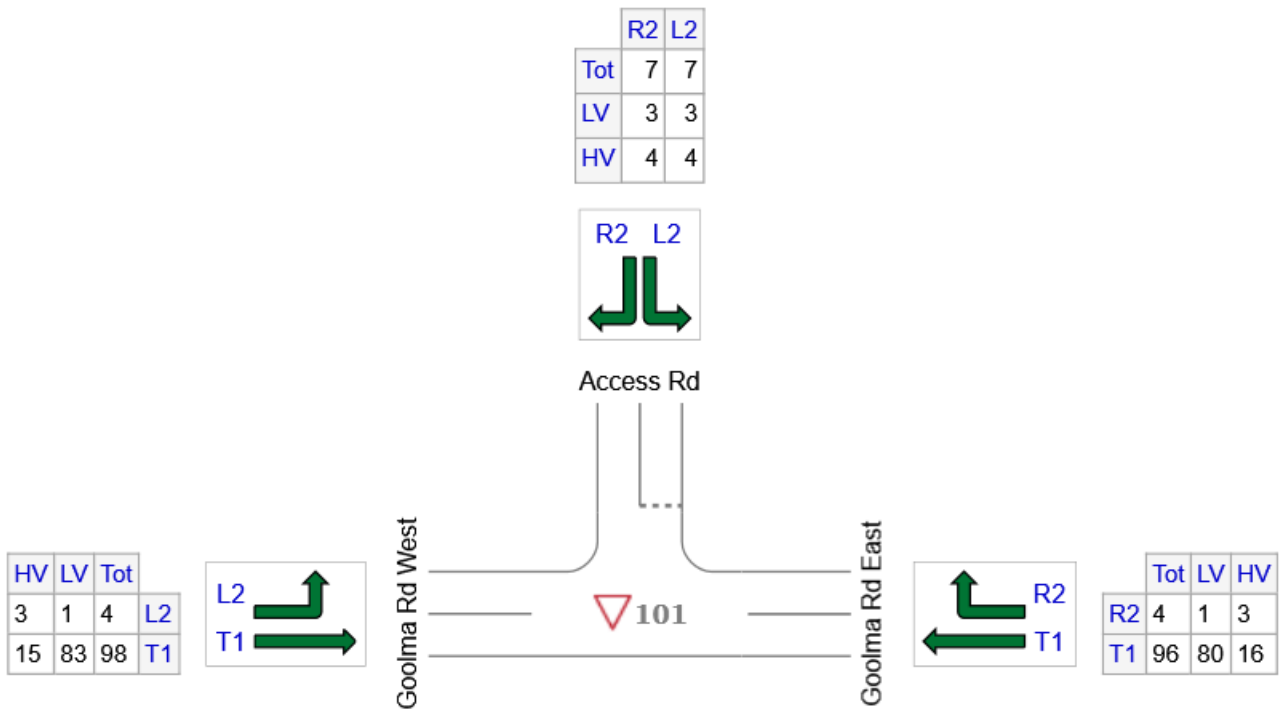
INPUT VOLUMES

Vehicles and pedestrians per 60 minutes

Site: 101 [Quarry Access Intersection - 2034 Post Development PM (Site Folder: General)]

New Site
 Site Category: (None)
 Give-Way (Two-Way)

Volume Display Method: Total and Veh



	All MCs	Light Vehicles (LV)	Heavy Vehicles (HV)
E: Goolma Rd East	100	81	19
N: Access Rd	14	6	8
W: Goolma Rd West	102	84	18
Total	216	171	45

DELAY - AVERAGE (CONTROL)

Average control delay per vehicle, or average pedestrian delay (seconds)

▼ Site: 101 [Quarry Access Intersection - 2034 Post Development PM (Site Folder: General)]

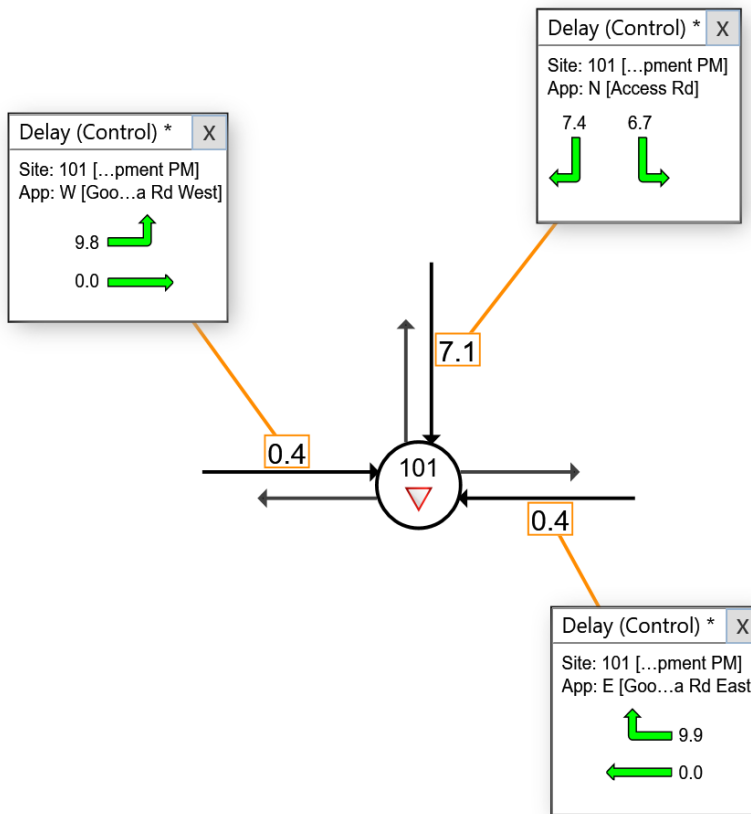
Output produced by SIDRA INTERSECTION Version: 9.1.4.221

New Site
 Site Category: (None)
 Give-Way (Two-Way)

Use the button below to open or close all popup boxes. Click value labels to open selected ones.
 Click and drag popup boxes to move to preferred positions.

Close All Popups

All Movement Classes (*)



Colour code based on Level of Service



NA: The movement only runs in short lanes and these are not included in determining Queue Storage Ratio, or the movement has zero volume for the selected Movement Class.

Site Level of Service (LOS) Method: Delay (SIDRA). Site LOS Method is specified in the Parameter Settings dialog (Options tab).
 Delay Model: SIDRA Standard (Control Delay: Geometric Delay is included).

Approach values are flow-weighted average values for vehicle movements (pedestrian delays not included).

QUEUE DISTANCE (PERCENTILE)

Largest 95% Back of Queue Distance for any lane used by the vehicle movement (metres)

▽ Site: 101 [Quarry Access Intersection - 2034 Post Development PM (Site Folder: General)]

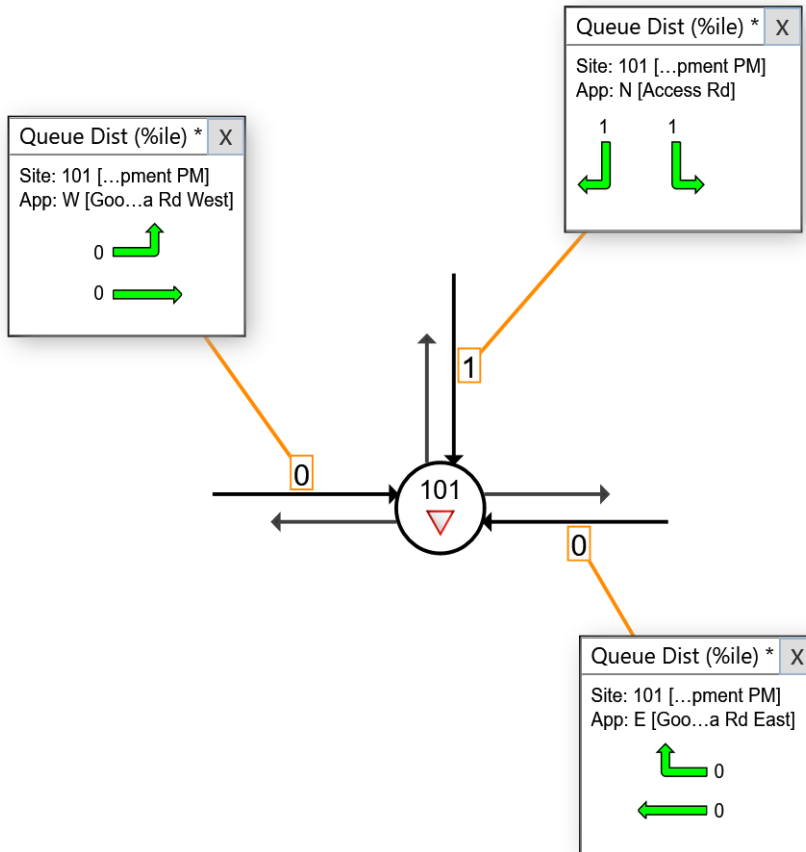
Output produced by SIDRA INTERSECTION Version: 9.1.4.221

New Site
 Site Category: (None)
 Give-Way (Two-Way)

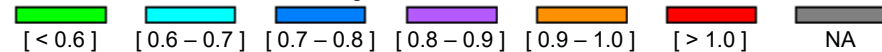
Use the button below to open or close all popup boxes. Click value labels to open selected ones. Click and drag popup boxes to move to preferred positions.

Close All Popups

All Movement Classes (*)



Colour code based on Queue Storage Ratio



NA: The movement only runs in short lanes and these are not included in determining Queue Storage Ratio, or the movement has zero volume for the selected Movement Class.

Queue Model: SIDRA queue estimation methods are used for Back of Queue and Queue at Start of Green.

LEVEL OF SERVICE

Movement Level of Service

▽ Site: 101 [Quarry Access Intersection - 2034 Post Development PM (Site Folder: General)]

Output produced by SIDRA INTERSECTION Version: 9.1.4.221

New Site

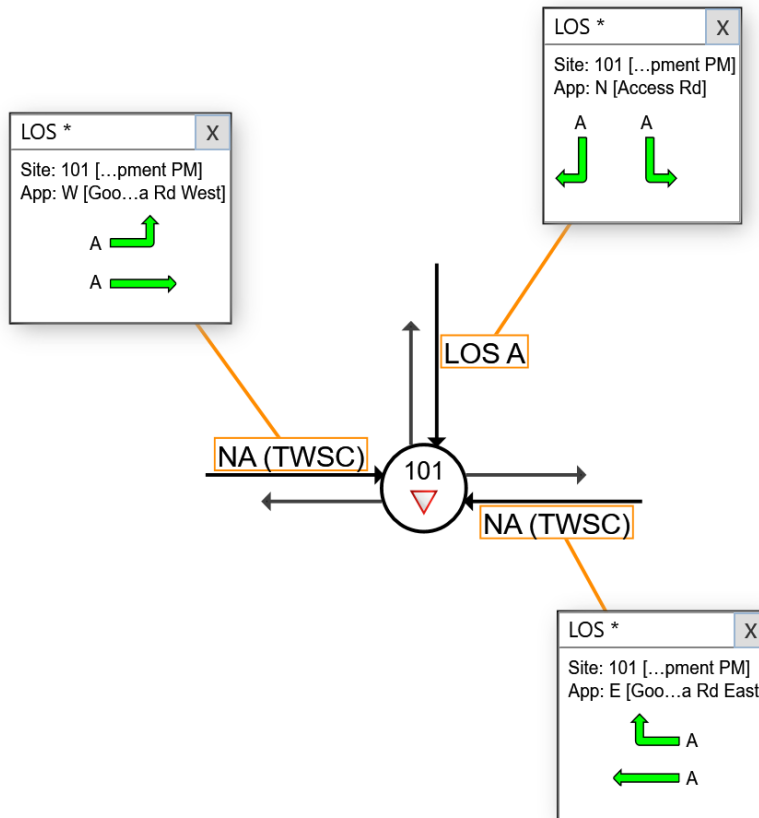
Site Category: (None)

Give-Way (Two-Way)

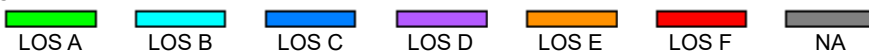
Use the button below to open or close all popup boxes. Click value labels to open selected ones. Click and drag popup boxes to move to preferred positions.

Close All Popups

All Movement Classes (*)



Colour code based on Level of Service



NA: The movement only runs in short lanes and these are not included in determining Queue Storage Ratio, or the movement has zero volume for the selected Movement Class.

NA (TWSC): Level of Service is not defined for major road approaches or the intersection as a whole for Two-Way Sign Control (HCM LOS rule).

Site Level of Service (LOS) Method: Delay (SIDRA). Site LOS Method is specified in the Parameter Settings dialog (Options tab).

Delay Model: SIDRA Standard (Control Delay: Geometric Delay is included).

DEGREE OF SATURATION

Ratio of Arrival Flow to Capacity, v/c ratio per lane

▽ Site: 101 [Quarry Access Intersection - 2034 Post Development PM (Site Folder: General)]

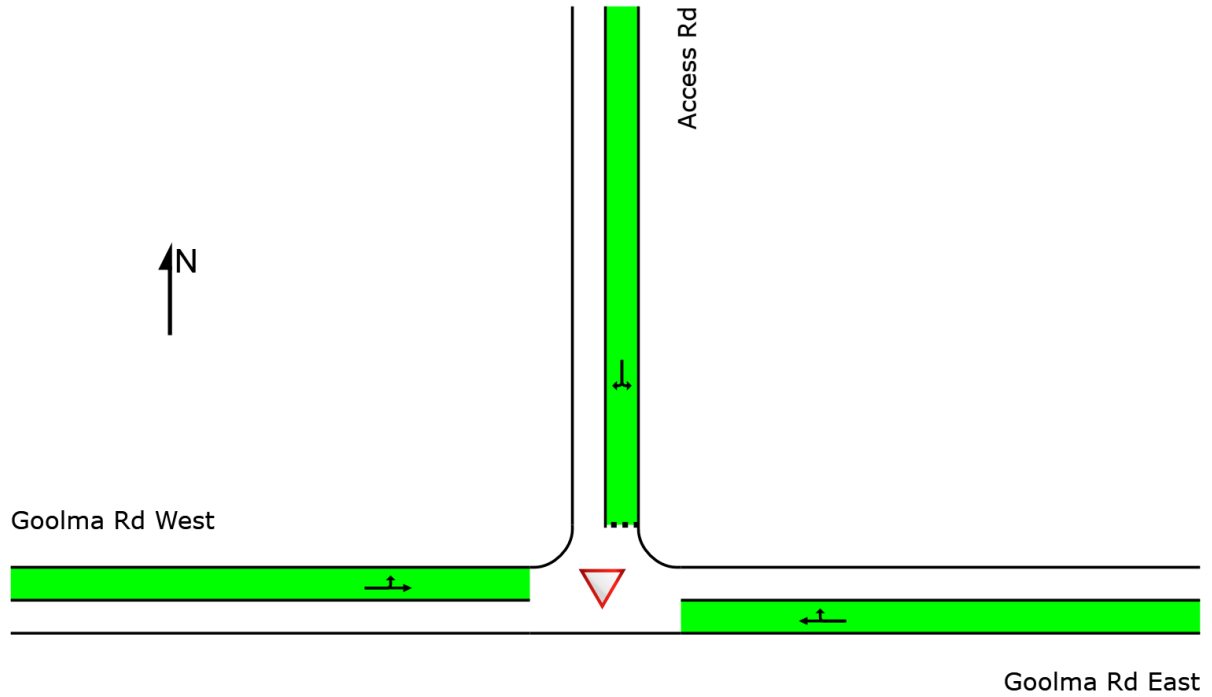
Output produced by SIDRA INTERSECTION Version: 9.1.4.221

New Site

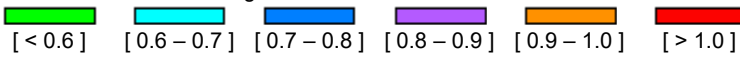
Site Category: (None)

Give-Way (Two-Way)

	Approaches			Intersection
	East	North	West	
Degree of Saturation	0.06	0.02	0.06	0.06



Colour code based on Degree of Saturation



SIDRA INTERSECTION 9.1 | Copyright © 2000-2023 Akcelik and Associates Pty Ltd | sidrasolutions.com

Organisation: PREMISE GROUP SERVICES PTY LTD | Licence: PLUS / 1PC | Processed: Friday, 16 February 2024 8:23:57 AM

Project: C:\12dS\data\12dSynergy\223256 DA 2152 Goolma Rd_15797\Internal\SIDRA\223256_ACCESS INTERSECTION.sip9