

### Existing fire safety measures:

1. Fire hose reel systems in all four tenancies (in accordance with AS 2441 - 2005).



Tenancy 1



Tenancy 2

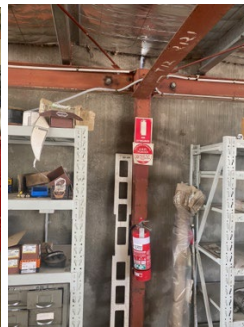


Tenancy 3



Tenancy 4

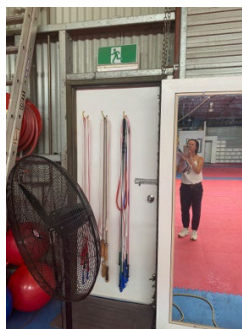
2. Portable fire extinguishers within tenancy 1 (Metro Hydraulics - maintained by Central Tablelands Fire & Electrical) (in accordance with AS 2444 -2001).



3. Exit signage provided in all four tenancies - located above rear exit doors. Extra exit signage located on internal wall of tenancy 3 MHI Water (in accordance with AS/NZS 2293.1-2018).



Tenancy 1: Incorrect exit signage.



Tenancy 2



Tenancy 3.



(Southern side of internal wall within workshop area).



Tenancy 4.

4. 2 x underground street fire hydrants are located directly opposite complex (northern side of Inglis St) and will provide sufficient coverage to satisfy the requirements of AS2419.1-2005 Clause 3.2.2.2. (A performance solution plan is being prepared by Luke Morris - Barnson).

**Proposed Fire Safety measures:**

1. Provide performance solution plan regarding fire hydrant system to satisfy requirements of AS 2419.1 – 2005 and BCA report (Part E2 – Fire Fighting Equipment Clause E1D2).

2. Portable fire extinguishers to be installed at nominated locations within the tenancies (rear exit doors and front doors) (to satisfy AS 2444 -2001 & BCA NCC E1D14).

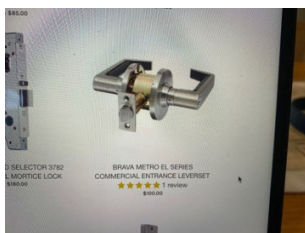
3. Exit signage repairs will be carried out to those signs that do not currently illuminate (to satisfy AS/NZS 2293.1-2018 & BCA NCC E4D8).

Exit signage in tenancy 1 is to be replaced with 'running man' signage. Exit sign currently situated on southern side of internal wall in tenancy 3 to be moved and erected on northern side of internal wall to be seen when entering building from front (to satisfy AS/NZS 2293.1-2018 & BCA NCC E4D5).

4. Directional exit signage to be installed at nominated locations in each tenancy (to satisfy AS/NZS 2293.1-2018 & BCA NCC (NSW) E4D6).

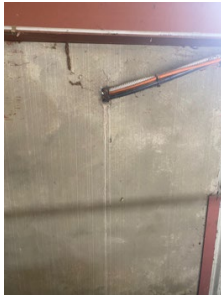
5. Emergency lighting to be installed in all 4 tenancies to satisfy AS/NZS 2293.1 – 2018 and BCA report (Part E4 – Emergency Lighting, exit signs and Warning systems – E4D2: Emergency lighting is to be provided throughout the common parts of the building).

6. All deadbolts or other obstructions will be removed from all the rear exit doors of the separate tenancies. To be replaced with a single hand downward action lever style handle that is openable without a key from inside the tenancy.



Example of door handle.

7. Penetration of the tilt up concrete panel southern wall return to be repaired using either a fire rated mastic (substance that creates a fire-resistant seal) or a fire rated hebel panel (Hebel systems are considered the easiest for installing and fire-sealing services penetrations). This advice provided by BCA consultant Tim O'Reilly.



Internal view of penetration



External view of penetration

Instruction regarding facilitation of fire safety measures to be addressed was provided by fire safety assessor Brenum Stewart (United Safety) following several site inspections. Please see copy of instruction list below.



**Brenum Stewart**

RE: Thanks

To: Terri-Ann Box

7 November 2023 at 9:12 am



Hey Terri,

I spoke with Jordan and I don't think we will have much luck with getting the 4 tenancies to be classed as sole occupancy units with the smaller floor area and it'll be one floor area greater than 1000m2.

List of what must happen until we hear more from council:

1. All deadbolts or other obstructions must be removed from all the rear exit doors of the separate tenancies. To be replaced with a single hand downward action lever style handle that is openable without a key from inside the tenancy.
2. All exit signs above these doors to be always illuminated. Replace any exit signs that are not illuminated or have the word "exit" instead of the running man. If it's a shoe box style light fitting replace with a shoebox style light fitting.
3. Exit sign in unit 3 that is approximately halfway into the tenancy needs to be moved to the other side of the wall, so it'll lead occupants out the rear required exit door.
4. Emergency lighting to be installed throughout common parts of all tenancies. This must be installed so that when the normal lighting fails in the tenancies the emergency lighting will activate. This can be achieved with the use of a circuit sensing test switch facility. Please ensure you do not miss the staircase leading from the mezzanine.
5. Portable fire extinguishers to be installed at the rear exit door and the front door of the tenancies. An ABE/DCP fire extinguisher with the required signage will be suitable.

I've attached a rough mark up for reference. Call to discuss or if you're in town again we can walk through site.

Thanks



**Brenum Stewart**  
*Electrician/Assessor*

📞 1800 424 889 | 📱 0477 882 551 | 📠 1800 424 889

✉ Brenum.Stewart@ussc.com.au

NSW



The information contained in this email communication may be confidential or legally privileged. It is intended exclusively for the individual or entity to which it is addressed. United Safety & Survivability Corporation does not represent, warrant, or guarantee the integrity of this email communication has been maintained nor that the communication is free from errors, virus, or interference. If you are not the intended addressee or recipient, please notify the sender and then destroy any electronic or paper copy of this message.

[See More from Terri-Ann Box](#)