

Federal Hotel | Landscape DA Package

34-36 Inglis Street, Mudgee NSW 2850

Drawing register:

Drawing No.:	Drawing title:
2401-01	Titlesheet, Drawing Register, General Notes & Extent of Works Plan
2401-02	Landscape DA Plan 1 of 1
2401-03	Planting DA Plan 1 of 1
2401-04	Plant DA Schedule, Plant Images
2401-05	Planting Specification Requirements, Planting Maintenance & Establishment Requirements

Project information:

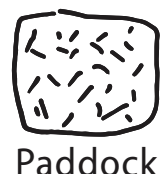
Client:	IMG Group
Site:	Lot 16-18 on DP758721 & Lot 10 on DP1275386, known as 4-36 Inglis Street, Mudgee NSW 2850
LGA:	Mid-Western Regional Council
Landscape architect:	Paddock Landscape Architects
Architect:	Bergstrom Architects
Planner:	TBC
Surveyor:	VMark Survey Pty Ltd
Traffic consultant:	SCT Consulting
Civil engineer:	TBC
Access consultant:	Vista Access
Arborist:	McArdle and Sons Arboricultural Services Pty Ltd

General notes:

- + Not for construction or pricing.
- + Subject to detailed design and documentation.
- + Subject to Council approvals.
- + Refer to 'Bergstrom Architects' documentation for all building works.
- + Refer to engineer documentation for all external services, including stormwater drainage, lighting, hydraulic etc.
- + All existing site levels within landscape softscape zones to be retained, unless otherwise documented.
- + Structures, fences, walls, balustrades, furniture etc subject to detailed design and engineering design.
- + Planting subject to availability at time of tender and construction.
- + Indicative planting extent and setout documented - may vary onsite due to site conditions.
- + Construction works to include sediment and erosion control fencing along lower boundary to ensure all sediment runoff contained on-site.
- + All podium planters or planters integrated within buildings to include a fully automated irrigation system, subject to detailed design by irrigation consultant.



Site plan - Extent of New Landscape Works



T 0413 445 096
E info@paddockstudio.com.au
G 46-52 Meagher Street
Chippendale NSW 2008
www.paddockstudio.com.au



Registered Landscape Architects
ALA 1761
ABN 82 628 312 274
ACN 628 312 274

Copyright Paddock Studio Pty Ltd 2018. Copyright in whole and every part belongs to Paddock Studio Pty Ltd. Not to be reproduced in any part without written agreement from Paddock Studio Pty Ltd.
Not for pricing or construction. Drawing to be read in conjunction with all relevant project and consultant documentation.

Issue: A Date: 28.09.23 Reason: For DA Submission

Reviewed by: DW

Project: Federal Hotel Mudgee
34-36 Inglis Street, Mudgee NSW 2850
Client: IMG Group

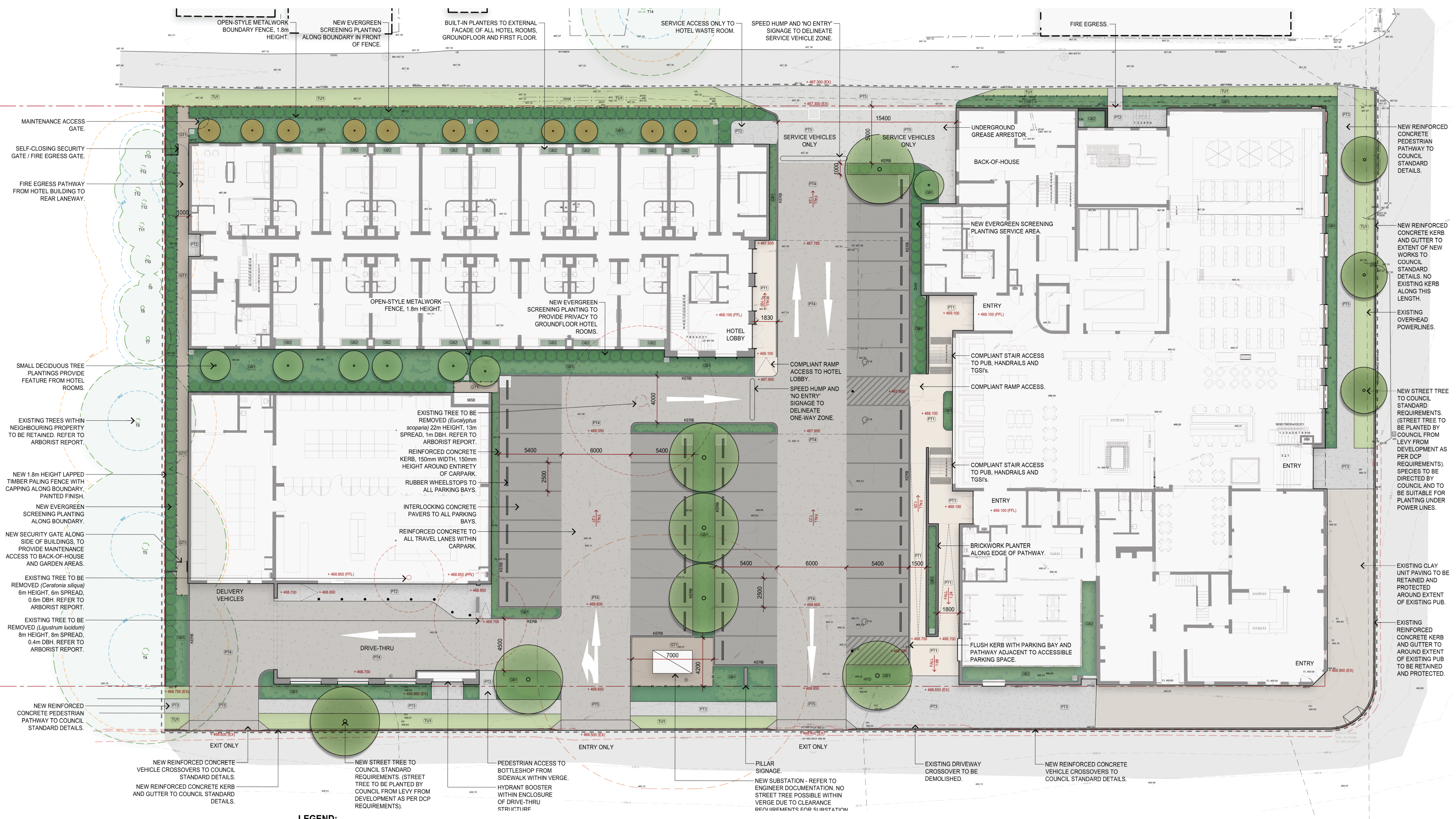
Title: Titlesheet
Drawing Register
General Notes
Extent of Works Plan

Project No.: 2401
Date: 28.09.2023
Scale: 1:300 @ A1



Drawing: 2401-01

Issue: A



LEGEND:

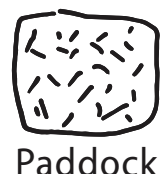
	PROPERTY BOUNDARY - REFER TO SURVEY.
	EXTENT OF DEMOLISHED ITEMS - REFER TO SURVEY.
	EXISTING FINISHED SURFACE LEVELS - REFER TO SURVEY.
	PROPOSED FINISHED SURFACE LEVELS FOR LANDSCAPE WORKS.
	NEW FIELD GULLY PIT CONNECTED TO SITE STORMWATER.
	PAVEMENT TYPE 1 (PEDESTRIAN AREAS) - UNIT PAVING ON MORTAR BEDDING AND REINFORCED CONCRETE BASE SLAB.

	PAVEMENT TYPE 2 (PEDESTRIAN AREAS) - REINFORCED CONCRETE WITH FULL DEPTH COLOUR PIGMENT AND LIGHTLY EXPOSED AGGREGATE FINISH.
	PAVEMENT TYPE 3 (PEDESTRIAN AREAS WITHIN VERGE) - REINFORCED CONCRETE TO COUNCIL STANDARD DETAILS.
	PAVEMENT TYPE 4 (VEHICLE AREAS) - REINFORCED CONCRETE WITH FULL DEPTH COLOUR PIGMENT AND LIGHTLY EXPOSED AGGREGATE FINISH.
	PAVEMENT TYPE 5 (VEHICLE AREAS WITHIN VERGE) - REINFORCED CONCRETE TO COUNCIL STANDARD DETAILS.
	PAVEMENT TYPE 6 (PARKING BAYS) - TRIHEX CONCRETE PAVERS INSTALLED ON COMPACTED BASECOURSE.
	GRAVEL TYPE 1 (SERVICE PATHWAYS) - WASHED RIVERSTONE MULCH 75mm DEPTH INSTALLED ON GEOTEXTILE FABRIC AND COMPACTED SUBBASE.

	GARDEN AREAS 1 (DEEP SOIL) - CULTIVATED SUBGRADE, IMPORTED ORGANIC GARDEN SOIL MIX 300mm DEPTH, IMPORTED ORGANIC MULCH 75mm DEPTH, MASS PLANTING SHRUBS, GRASSES AND/OR GROUNDCOVERS.
	GARDEN AREAS 2 (PODIUMS) - IMPORTED LIGHT-WEIGHT ORGANIC PLANTER SOIL MIX DEPTH VARIES, IMPORTED ORGANIC MULCH 75mm DEPTH, MASS PLANTING SHRUBS, GRASSES AND/OR GROUNDCOVERS.
	TURF AREAS 1 - CULTIVATED SUBGRADE, 100mm IMPORTED TURF UNDERLAY, TURF.
	GALVANISED STEEL GARDEN EDGING.
	NEW TREE PLANTINGS.
	EXISTING TREES TO BE REMOVED - REFER TO ARBORIST REPORT.

	EXISTING TREES TO BE RETAINED - REFER TO ARBORIST REPORT.
	TREE PROTECTION ZONE (TPZ) - REFER TO ARBORIST REPORT.
	STRUCTURAL ROOT ZONE (SRZ) - REFER TO ARBORIST REPORT.

NOTE:
1. NOT FOR PRICING OR CONSTRUCTION. SUBJECT TO DETAILED DESIGN.
2. SUBJECT TO COUNCIL APPROVALS.



T 0413 445 096
E info@paddockstudio.com.au
G 46-52 Meagher Street
Chippendale NSW 2008
www.paddockstudio.com.au



Registered Landscape Architects
ALA 1761
ABN 82 628 312 274
ACN 628 312 274

Copyright Paddock Studio Pty Ltd 2018. Copyright in whole and every part belongs to Paddock Studio Pty Ltd. Not to be reproduced in any part without written agreement from Paddock Studio Pty Ltd.
Not for pricing or construction. Drawing to be read in conjunction with all relevant project and consultant documentation.

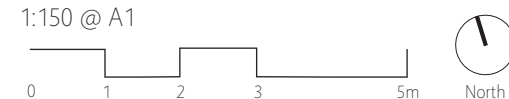
Issue: A Date: 28.09.23 Reason: For DA Submission

Reviewed by: DW

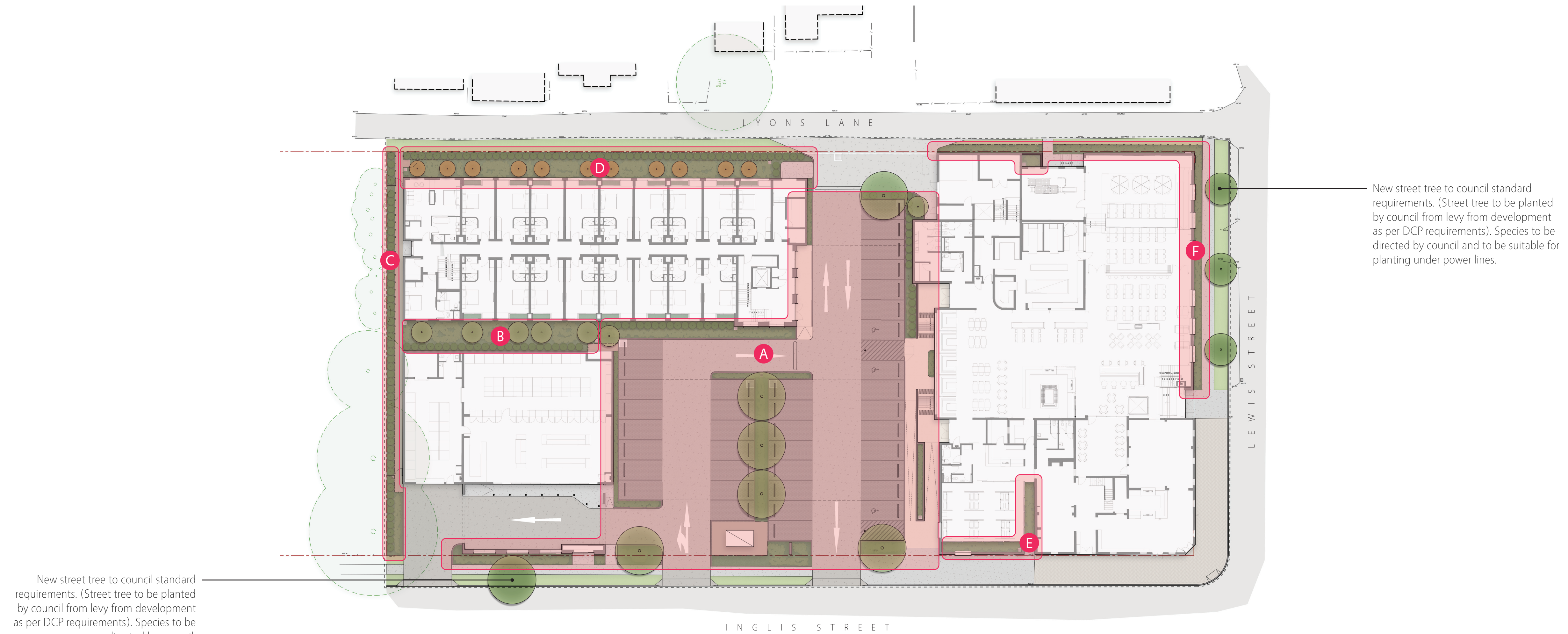
Project: Federal Hotel Mudgee
34-36 Inglis Street, Mudgee NSW 2850
Client: IMG Group

Title: Landscape DA Plan
1 of 1

Project No: 2401
Date: 28.09.2023
Scale: 1:150 @ A1



Drawing: 2401-02
Issue: A



Planting DA Plan
Scale: 1:300 @A1

Area A

Plant Code:	Quantity:
Groundcovers:	
BRA mul	40
CAS gla CI	18
DIC rep	75
GRE lan MT	32
HIB sca	18
MYO par	24
ROS off P	18
HAR vio M	24
VIO hed	75
Grasses:	
ANI AV	24
DIA cae LJ	45
LIR mus EG	45
LOM lon T	70
PEN alo N	55
POA lab K	45
Broadleaf:	
CLI min	35
CRI ped	18
DOR exc	12
PHO ten BB	28
Shrubs + Screening:	
BUX mic J	35
BAN rob	9
CAL vim BJ	18
COR alb	12
LAV sto A	35
PIT ten GP	19
RHA ind SM	28
SYZ aus R	18
VIB odo EL	6
WES fru GB	35
Trees:	
EUC leu	3
EUC sco	3
MAG gra LG	1

Area B

Plant Code:	Quantity:
Groundcovers:	
DIC rep	25
HIB sca	12
MYO par	9
PRA ped	25
HAR vio M	12
VIO hed	25
Grasses:	
DIA cae LJ	32
LIR mus EG	32
LOM lon T	25
LOM lon	18
Broadleaf:	
CLI min	15
CRI ped	12
DOR exc	9
PHO ten BB	15
Shrubs + Screening:	
BUX mic J	12
RHA ind SM	12
SYZ aus R	15
VIB odo EL	10
Trees:	
MAG gra LG	5

Area C

Plant Code:	Quantity:
Groundcovers:	
DIC rep	40
GRE PRM	15
HIB sca	9
MYO par	15
HAR vio M	9
VIO hed	40
Grasses:	
DIA cae LJ	30
LIR mus EG	30
LOM lon T	20
LOM lon	15
POA lab K	12
Broadleaf:	
DOR exc	3
PHO ten BB	6V
Shrubs + Screening:	
BUX mic J	6
PIT ten GP	42
RHA ind SM	6
SYZ aus R	11
WES fru GB	6

Area D

Plant Code:	Quantity:
Groundcovers:	
DIC rep	12
CAS gla CI	35
DIC rep	38
GRE lan MT	22
HIB sca	25
ROS off P	35
HAR vio M	15
VIO hed	38
Grasses:	
ANI AV	20
DIA cae LJ	35
LIR mus EG	35
LOM lon T	30
PEN alo N	30
POA lab K	25
Broadleaf:	
CLI min	25
CRI ped	15
DOR exc	9
PHO ten BB	15
Shrubs + Screening:	
BUX mic J	18
BAN rob	5
CAL vim BJ	15
COR alb	12
GRE jun	5
LAV sto A	25
PIT ten GP	30
RHA ind SM	18
VIB odo EL	27
WES fru GB	18
Trees:	
LAG ind T	4
PYR cal C	7

Area E

Plant Code:	Quantity:
Groundcovers:	
DIC rep	25
HIB sca	5
PRA ped	15
VIO hed	25
Grasses:	
DIA cae LJ	15
LIR mus EG	15
Broadleaf:	
CLI min	9
CRI ped	5
PHO ten BB	5
Shrubs + Screening:	
BUX mic J	6
RHA ind SM	6
SYZ aus R	6

Area F

Plant Code:	Quantity:
Groundcovers:	
BRA mul	25
CAS gla CI	28
DIC rep	40
GRE lan MT	28
HIB sca	18
MYO par	18
ROS off P	28
VIO hed	40
Grasses:	
DIA cae LJ	35
LIR mus EG	30
LOM lon T	35
POA lab K	30
Broadleaf:	
CLI min	9
PHO ten BB	12
Shrubs + Screening:	
BUX mic J	18
CAL vim BJ	15
COR alb	5
LAV sto A	25
PIT ten GP	3
RHA ind SM	18
WES fru GB	15

Planting General Notes:

- + Refer to drawing 2401-04 for the Plant Schedule & Maintenance Notes/ Requirements.
- + Planting design subject to detailed design. Not for pricing or construction.
- + All new deep soil garden areas subgrade to be cultivated prior to installation of new imported organic garden soil.
- + All new deep soil garden areas to include minimum 300mm depth of imported organic garden soil, mixed through existing site soil where possible.
- + All garden areas to be mulched with 75mm depth of imported organic garden mulch.
- + All new lawn areas to include minimum 100mm depth of imported turf underlay.
- + Sub-surface drainage to all garden areas, connected to site stormwater.
- + All garden and lawn areas to be irrigated with a fully automated drip-irrigation system. Irrigation system design subject to detailed design.

Plant Schedule & Maintenance Requirements:

(to be read in conjunction with drawing 2401-03)

Code	Scientific name:	Common name:	Pot Size:	Mature height & spread*:	Density:	Quantity:	Maintenance requirements:
	Groundcovers + Vines:						
BRA mul	Brachyscome multifida	Cut-leaf Daisy	140mm Pot	0.4 x 0.2m	5 / m²	77	Seasonal maintenance to promote new growth.
CAS gla CI	Casuarina glauca 'Cousin it'	Cousin It	140mm Pot	0.5 x 0.5m	3 /m²	81	Seasonal maintenance to promote new growth. Allow to cascade down face of walls.
DIC rep	Dichondra repens	Kidney Weed	Tubestock	0.1 x 0.3m	6 / m²	243	Allow to form a natural weed-cover within garden areas.
GRE lan MT	Grevillea lanigera 'Mt Tamboritha'	Spider Flower	140mm Pot	0.2 x 1m	3 /m²	82	Seasonal maintenance to promote new growth.
GRE PRM	Grevillea 'Poorinda Royal Mantle'	Grevillea	140mm Pot	0.2 x 1m	3 /m²	15	Seasonal maintenance to promote new growth. Maintain to garden extent if it begins encroaching on paths/lawn areas.
HIB sca	Hibbertia scandens	Golden Guinea Flower	140mm Pot	0.5m x 1m	3 / m²	87	Seasonal maintenance to promote new growth. Maintain to garden extent if it begins encroaching on paths/lawn areas.
MYO par	Myoporum parvifolia	Boobialla	140mm Pot	0.5m x 1m	3 /m²	66	Seasonal maintenance to promote new growth. Maintain to garden extent if it begins encroaching on paths/lawn areas.
PRA ped	Pratia pedunculata	Trailing Pratia	Tubestock	0.1 x 0.3m	6 / m²	40	Allow to form a natural weed-cover within garden areas.
ROS off P	Rosmarinus officinalis 'Prostratus'	Creeping Rosemary	140mm Pot	0.1 x 0.3m	4 / m²	871	Seasonal maintenance to promote new growth. Allow to cascade down face of walls.
HAR vio M	Hardenbergia violacea 'Meema'	Hardenbergia Meema	140mm Pot	0.5 x 0.5m	3 /m²	60	Seasonal maintenance to promote new growth.
VIO hed	Viola hederacea	Native Violet	Tubestock	0.1 x 0.3m	6 / m²	243	Allow to form a natural weed-cover within garden areas.
	Grasses:						
ANI AV	Anigozanthos 'Amber Velvet'	Kangaroo Paw (Orange-Red)	140mm Pot	0.5 x 0.5m	5 / m²	44	Seasonal maintenance to remove dead flowers.
DIA cae LJ	Dianella caerulea 'Little Jess'	Blue Flax Lily	140mm Pot	0.4 x 0.4m	5 / m²	192	
LIR mus EG	Liriope muscari 'Evergreen Giant'	Liriope	140mm Pot	0.5 x 0.5m	4 / m²	187	
LOM lon T	Lomandra longifolia 'Tanika'	Tanika	140mm Pot	0.5 x 0.5m	4 / m²	180	
LOM lon	Lomandra longifolia	Spiny Matrush	140mm Pot	0.8 x 0.8m	3 / m²	33	
PEN alo N	Pennisetum alopecuroides 'Nafray'	Fountain Grass	140mm Pot	0.6 x 0.6m	5 / m²	85	Seasonal maintenance to promote new growth.
POA lab K	Poa labillardieri 'Kingsdale'	Common Tussock Grass	140mm Pot	0.6 x 0.6m	4 / m²	112	Seasonal maintenance to promote new growth.
	Broadleafed:						
CLI min	Clivia miniata	Clivia	200mm pot	0.5 x 0.5m	4 / m²	93	Seasonal maintenance to remove dead flowers.
CRI ped	Crinum pedunculatum	Swamp Lilly	200mm pot	0.8 x 0.8m	3 / m²	50	Seasonal maintenance to remove dead flowers.
DOR exc	Doryanthes excelsa	Gymea Lilly	200mm Pot	1.5 x 1.0m	1 / m²	33	Seasonal maintenance to remove dead flowers. Maintain compact form by removing lower leaves.
PHO ten BB	Phormium tenax 'Bronze Baby'	Phormium	200mm Pot	0.8 x 0.8m	3 / m²	75	
	Shrubs + Screening:						
BUX mic J	Buxus microphylla 'Japonica'	Buxus	200mm Pot	0.8 x 0.8m	2 / m²	95	Seasonal maintenance to maintain compact, ball-form, 0.8m height by 0.8m spread.
BAN rob	Banksia robur	Swamp Banksia	200mm Pot	2.0 x 2.0m	2 / m²	14	Seasonal maintenance to maintain compact form, 1m height by 0.8m spread.
CAL vim BJ	Callistemon viminalis 'Better John'	Dwarf Callistemon	200mm Pot	0.8 x 0.8m	2 / m²	48	Seasonal maintenance to maintain compact, ball-form, 0.8m height by 0.8m spread.
COR alb	Correa alba	White Correa	200mm Pot	1.0 x 1.5m	1 / m²	29	Seasonal maintenance to maintain compact, ball-form, 0.8m height by 0.8m spread.
GRE jun	Grevillea juniperina	Juniper-leaved Grevillea	200mm Pot	0.5 x 1.5m	3 / m²	5	
LAV sto A	Lavandula stoechas 'Avonview'	Lavender	200mm Pot	0.5 x 0.5m	3 / m²	85	
PIT ten GP	Pittosporum tenuifolium 'Green Pillar'	Pittosporum Green Pillar	25L	2.0 x 1.5m	1 / m²	94	Seasonal maintenance to maintain informal hedge to height of boundary fence 1.8-2m height by 0.7m spread.
RHA ind SM	Rhaphiolepis indica 'Snow Maiden'	Snow Maiden	200mm Pot	0.8 x 0.8m	2 / m²	88	Seasonal maintenance to maintain compact, ball-form, 0.8m height by 0.8m spread.
SYZ aus R	Syzygium australe 'Resilience'	Lilly Pilly	25L	2.0 x 1.5m	1 / m²	50	Seasonal maintenance to maintain informal hedge to height of boundary fence 1.8-2m height by 0.7m spread.
VIB odo EL	Viburnum odoratissimum 'Emerald Lustre'	Viburnum	25L	2.0 x 1.5m	1 / m²	43	Seasonal maintenance to maintain informal hedge to height of boundary fence 1.8-2m height by 0.7m spread.
WES fru GB	Westringia fruticosa 'Grey Box'	Compact Coastal Rosemary	140mm Pot	0.5 x 0.5m	4 / m²	74	Seasonal maintenance to maintain compact form, 0.4m height by 0.4m spread.
	Trees:						
EUC leu	Eucalyptus leucoxylon	Yellow Gum	75L	12 x 5m	-	3	
EUC sco	Eucalyptus scoparia	Wallangarra White Gum	75L	12 x 8m	-	3	
MAG gra LG	Magnolia grandiflora 'Little Gem'	Magnolia	75L	6 x 3m	-	6	Maintain compact with clear trunk 1.5m height.
LAG ind T	Lagerstroemia indica 'Tuscarora'	Crepe Myrtle	75L	5 x 4m	-	4	Maintain compact with clear trunk 1.5m height.
PYR cal C	Pyrus calleryana 'Capital'	Capital Pear	75L	6 x 3m	-	7	Maintain compact with clear trunk 1.5m height.
	Turf Planting:						
TU1	-	Village Green 'Kikuyu'	-	-	-	-	Maintain as required to pile height of approximately 40mm.

Notes:

- + *Nominal height / spread at maturity - will vary based on maintenance regimes and site growing conditions.
- + Planting design subject to detailed design and documentation.
- + Species selection subject to availability at time of tendering and construction.

Groundcovers + Vines:



BRA mul: Brachyscome multifida | Cut-leaf Daisy



CAS gla CI: Casuarina glauca 'Cousin it' | Cousin It



DIC rep: Dichondra repens multifida | Kidney Weed



GRE lan MT: G. lanigera 'Mt Tamboritha' | Spider Flower



GRE PRM: Grevillea 'Poorinda Royal Mantle' | Grevillea



HIB sca: Hibbertia scandens Golden Guinea Flower



MYO par: Myoporum parvifolia Boobialla



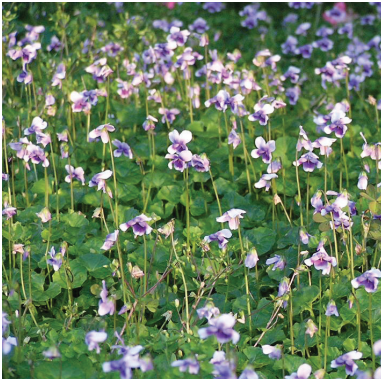
PRA ped: Pratia pedunculata Trailing Pratia



ROS off P: Rosmarinus officinalis 'Prostratus'



HAR vio M: Hardenbergia violacea 'Meema'



VIO hed: Viola hederacea Native Violet

Grasses + Broadleafed:



ANI AV: Anigozanthos 'Amber Velvet' | Kangaroo Paw



DIA cae LJ: Dianella caerulea 'Little Jess' | Blue Flax Lily



LIR mus EG: Liriope muscari 'Evergreen Giant'



LOM lon T: Lomandra longifolia 'Tanika'



LOM lon: Lomandra longifolia Spiny Matrush



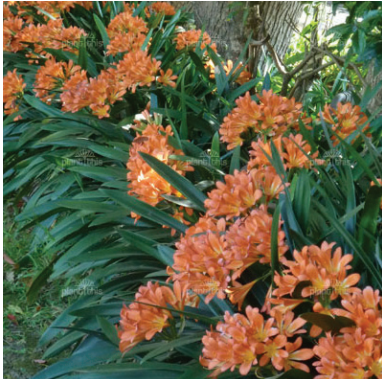
PEN alo N: Pennisetum alopecuroides 'Nafray'



POA lab K: Poa labillardieri 'Kingsdale'



PHO ten BB: Phormium tenax 'Bronze Baby'



CLI min: Clivia miniata



CRI ped: Crinum pedunculatum | Swamp Lilly



DOR exc: Doryanthes excelsa Gymea Lilly

Shrubs:



BUX mic J: Buxus microphylla 'Japonica'



BAN rob: Banksia robur Swamp Banksia



CAL vim BJ: Callistemon viminalis 'Better John'



COR alb: Correa alba White Correa



GRE jun: Grevillea juniperina Juniper-leaved Grevillea



LAV sto A: Lavandula stoechas 'Avonview'



PIT ten GP: Pittosporum tenuifolium 'Green Pillar'



RHA ind SM: Rhaphiolepis indica 'Snow Maiden'



SYZ aus R: Syzygium australe 'Resilience'



VIB odo EL: V. odoratissimum 'Emerald Lustre'



WES fru GB: Westringia fruticosa 'Grey Box'

Trees:



EUC leu: Eucalyptus leucoxylon | Yellow Gum



EUC sco: Eucalyptus scoparia Wallangarra White Gum



MAG gra LG: Magnolia grandiflora 'Little Gem'



LAG ind T: Lagerstroemia indica 'Tuscarora'



PYR cal C: Pyrus calleryana 'Capital'



T 0413 445 096
E info@paddockstudio.com.au
G 46-52 Meagher Street
Chippendale NSW 2008
www.paddockstudio.com.au



Registered Landscape Architects
AIA 1761
ABN 82 628 312 274
ACN 628 312 274

Copyright Paddock Studio Pty Ltd 2018. Copyright in whole and every part belongs to Paddock Studio Pty Ltd. Not to be reproduced in any part without written agreement from Paddock Studio Pty Ltd.
Not for pricing or construction. Drawing to be read in conjunction with all relevant project and consultant documentation.

Issue: A Date: 28.09.23 Reason: For DA Submission

Reviewed by: DW

Project: Federal Hotel Mudgee
34-36 Inglis Street, Mudgee NSW 2850
Client: IMG Group

Title: Plant DA Schedule
Plant Images

Project No.: 2401
Date: 28.09.2023
Scale: NTS @ A1

Drawing: 2401-04
Issue: A

Maintenance Requirements & Management Plan:

General:

The landscape works shall be maintained for the full life of the landscape. The frequency of maintenance shall occur every fortnight and works include, but are not limited to, watering, weeding, pruning, rubbish removal, fertilising, pest and disease control, plant replacement and the like.

Ensure the general appearance and presentation of the landscape and the quality of plant material at date of installation is maintained for the full life of the landscape.

Prune to AS4373 and the pruning requirements as outlined within the Plant Schedule on drawing 2401-04.

Fertilising:

Fertiliser shall be an approved prolonged release type, such as ‘native plant food + t/e’ as supplied by Patons or approved equivalent with a N:P:K:S ratio of 7.9:1.8:5.2(s/p): 8.7 applied at the rate specified by the manufacturer. Apply all-purpose fertiliser to mass planting areas annually in two bands and cultivated into the soil 100 mm deep.

Season: fertilise all planting in September and March according to their seasonal growth requirement.

Insect & Disease Control:

Insecticide and fungicide spraying, if considered necessary, shall be carried out in accordance with the manufacturer’s instructions. The maintenance contractor shall treat all occurrences of insect attack or disease in plant material.

Period for treatment: until the problem has been eliminated.

Chemical spray: avoid windy days or if rain is likely to follow within 12 hours. Apply to the manufacturer’s instructions and material data and safety sheets.

Weeding:

Weeds are unwanted plants and grasses not planted as part of the original works.

Program: as required for planted and mulched areas to be weed free when observed at fortnightly maintenance intervals.

Method: clear and keep clear vigorous ground covers 200 mm from the base of any large shrub, palm or tree. To be completed by hand.

Herbicide application: avoid windy days or if rain is likely to follow within 12 hours. Apply to the manufacturer’s instructions and material data and safety sheets. Apply when the weather is humid with moderate temperatures and maximum sunlight. Apply when the ground has the recommended soil moisture.

Stakes & Ties:

Adjust and/or replace stakes and ties where required. Remove all stakes ties when the planting has fully established and is self-supporting.

Generally, if plants are unable to be self-supported or if stakes are damaged, stake or re-stake the plants as required.

Removal: if plants are robust with well-developed systems and are strong enough to no longer require support, remove stakes and ties.

Mulched areas:

Maintain mulched areas in a clean and tidy condition. Reinstate mulch to specified depths and extents. The maintenance contractor is to allow to top up all mulch areas at least once every three months.

Depth: maintain a minimum depth of 75mm for organic mulch. Maintain the original ground levels around the base of plants.

Grass Areas - General:

Litter: remove litter and fallen branches before mowing.
Grass height: consistent with the growth habit of the grass variety and maintained at 25 mm to 35 mm throughout the year.
Program: weekly during the mowing season, november to march, and at bi-weekly intervals during april to october. Do not mow under wet conditions.
Raking: once every month before mowing, during the mowing season, with a flexible rake. On alternate mowings, adopt a north-south and east-west pattern.
Edges:at the same time as mowing, trim lawn edges to plant beds, pathways, base of trees and other obstacles. Ensure trees and shrubs are not damaged.
Clippings distribution: off site.

Grass Areas - Topdressing:

Topdressing material for established lawns: weed free imported sandy topsoil to a depth of 5 mm.
Program: the spring following establishment.
Topdressing material for remediation of depressions or irregularities: apply coarse or medium soil to as 4419 suitable for application to turf or grass seeded areas.

Grass Areas - Fertilising:

Fertilising: apply lawn fertiliser at the completion of the first and last mowings of the plant establishment period, and at other times as required to maintain healthy grass cover.

Watering:

Watering program: minimum three complete waterings, soaking to a depth of 150 mm at fortnightly intervals for the first 6 weeks of plant establishment irrespective of natural rainfall. Mass planted areas including trees shall be watered regularly with an even deeply penetrating application to ensure continuous healthy growth. Avoid frequent dampening of the surface. Allow the surface of the soil to partially dry out between waterings.

Water quality: ph between 5.5 and 7.5. Total soluble salts less than 1000 mg/litre. No substances that would be toxic to plant growth.

Water restrictions: coordinate the water supply and confirm the watering regime against state and territory legislation and restrictions at the time.

Irrigation:

Drip irrigation system for all mass planted areas are included for all planters, connected to the site stormwater harvesting system. Regularly inspect the irrigation system to ensure it is functioning appropriately as per the manufacturers requirements.

Replacement planting:

Immediately replace plants, which die or fail to thrive or are damaged or stolen, with plants of same size and quality unless otherwise directed. All planters are located within compliant accessible terraces.

Waste removal:

Remove all green waste and general waste from ongoing maintenance inspections via the building waste management system. Green waste is to be disposed in appropriate green waste systems for recycling. Any large limbs of foliage that is removed is to be broken down to a manageable size and disposed as required via the building waste management system

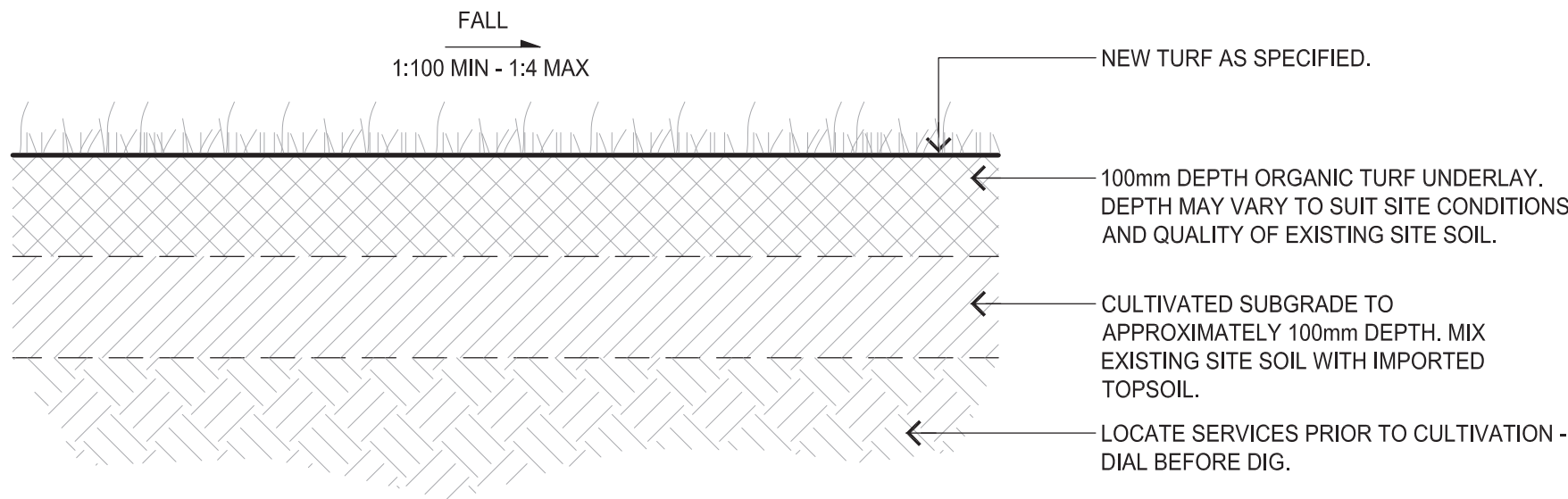
Completion:

Generally: plant maintenance period shall be deemed complete, subject to the following:
+ Repairs to planting media completed.
+ Pests, disease, or nutrient deficiencies or toxicities are not evident.
+ Organic and rock mulched surfaces have been maintained in a weed free and tidy condition and to the specified depth.
+ Vegetation is established and well formed.
+ Plants have healthy root systems that have penetrated into the surrounding, undisturbed ground and not able to be lifted out of its planting hole.
+ Collection and removal of litter.
+ Removal of mulch from drainage and access areas.

Immediately replace plants, which die or fail to thrive or are damaged or stolen, with plants of same size and quality unless otherwise directed.
In the case of stolen or vandalised plants the contractor will be required to replace the plants a maximum of once for each plant.

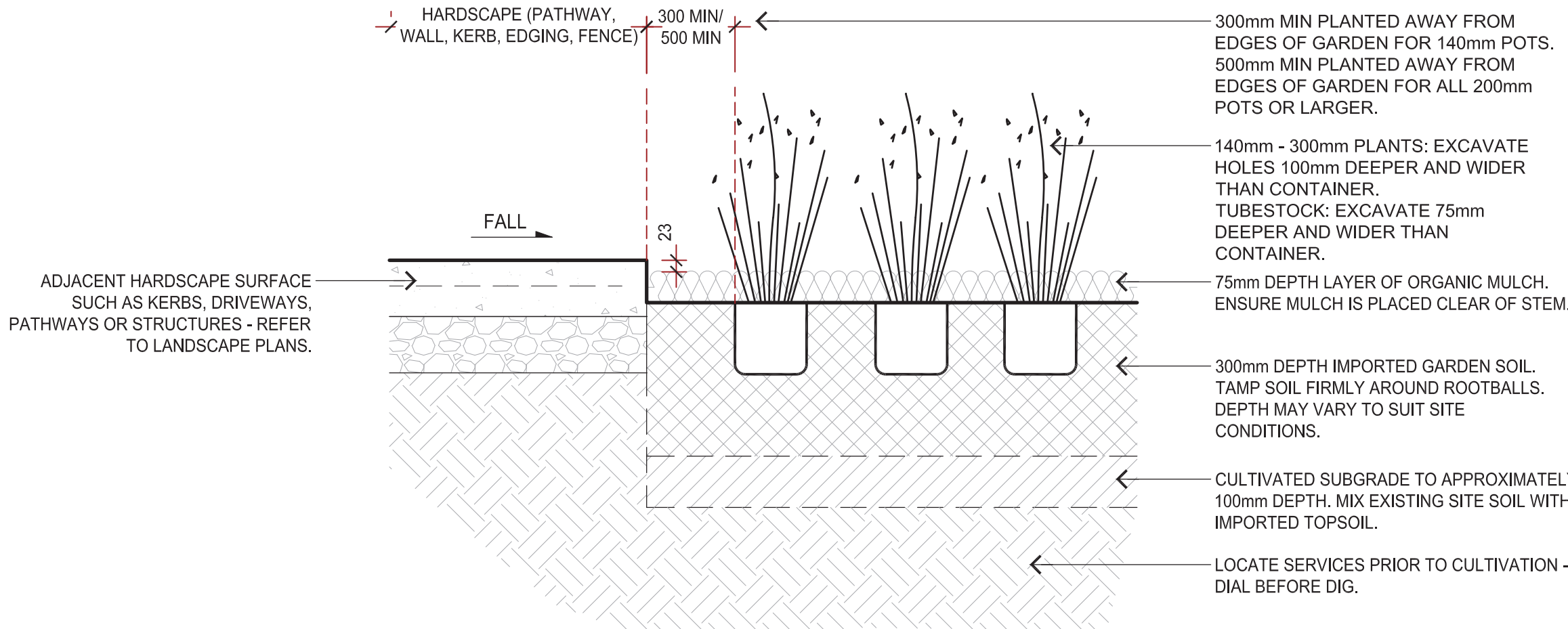
Plant establishment compliance table:

Plant material:	Acceptable failure per area:	Acceptable concentration of failure:
Tube stock	< 10%	< 15% in any given location
140mm	< 5%	< 15% in any given location
300 mm or larger	< nil%	nil %
Turf	< 5%	nil %



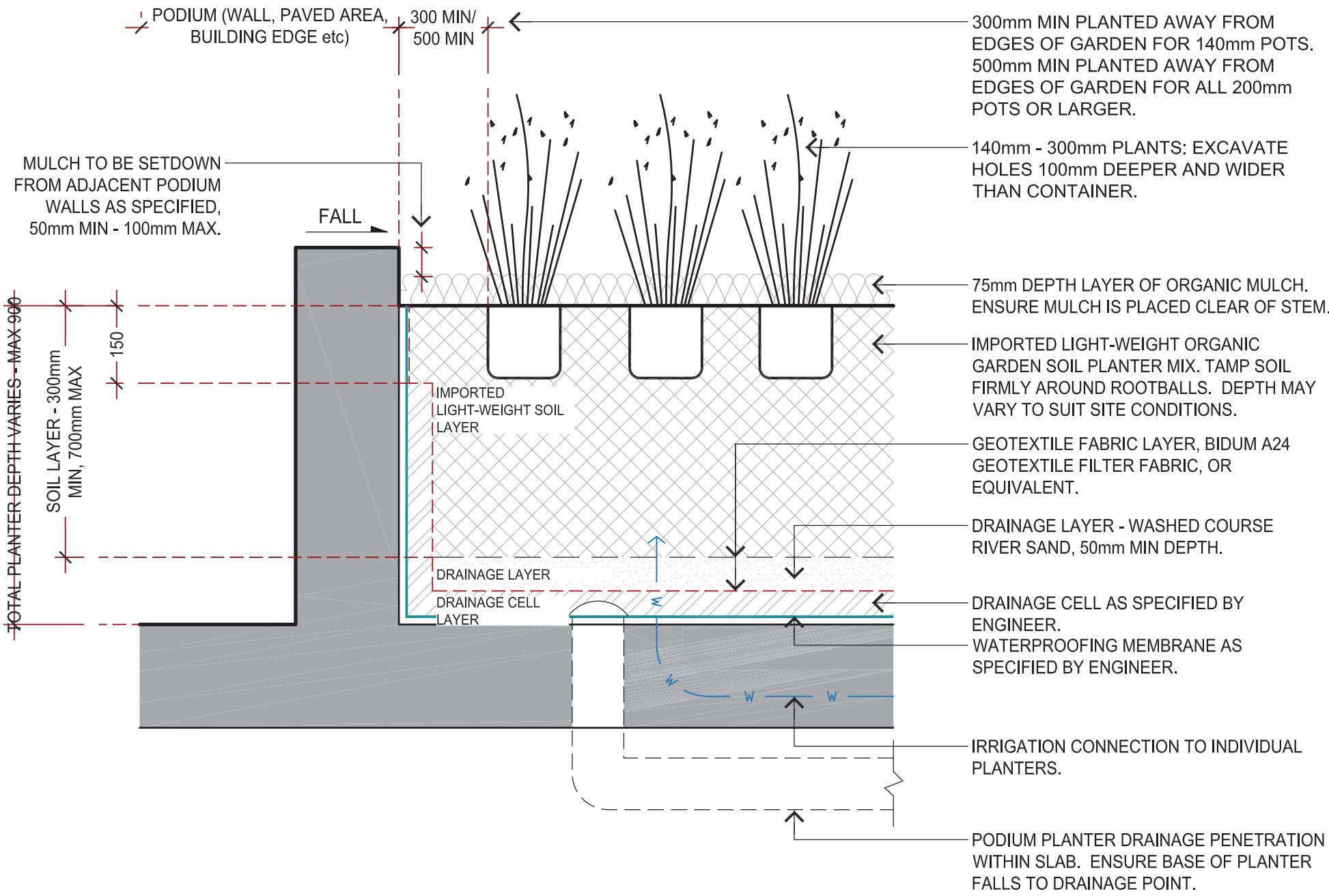
Turf Planting - Typical Detail:

Scale: 1:10 @A1



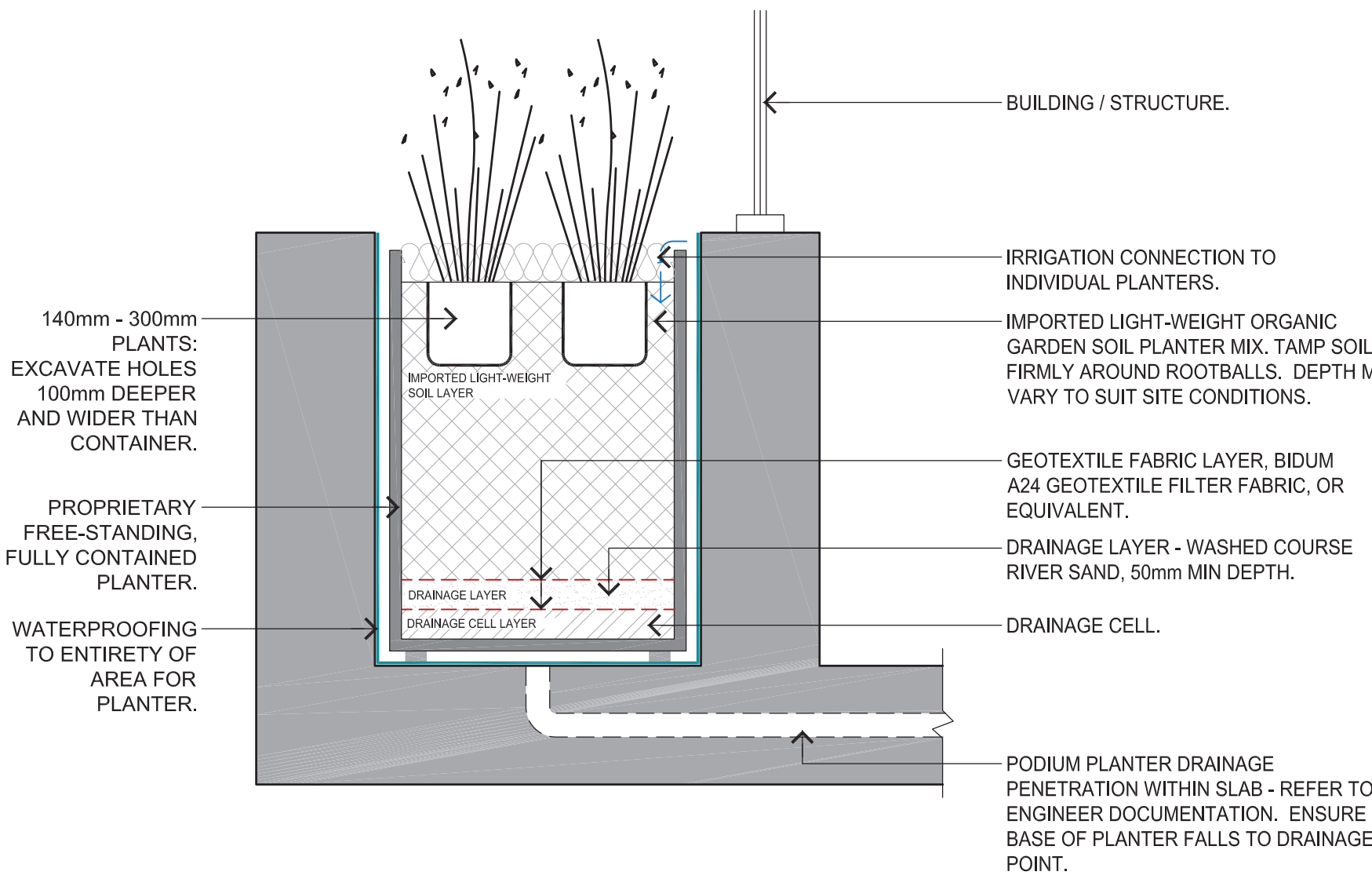
Mass Planting (Deep soil) - Typical Detail:

Scale: 1:10 @A1



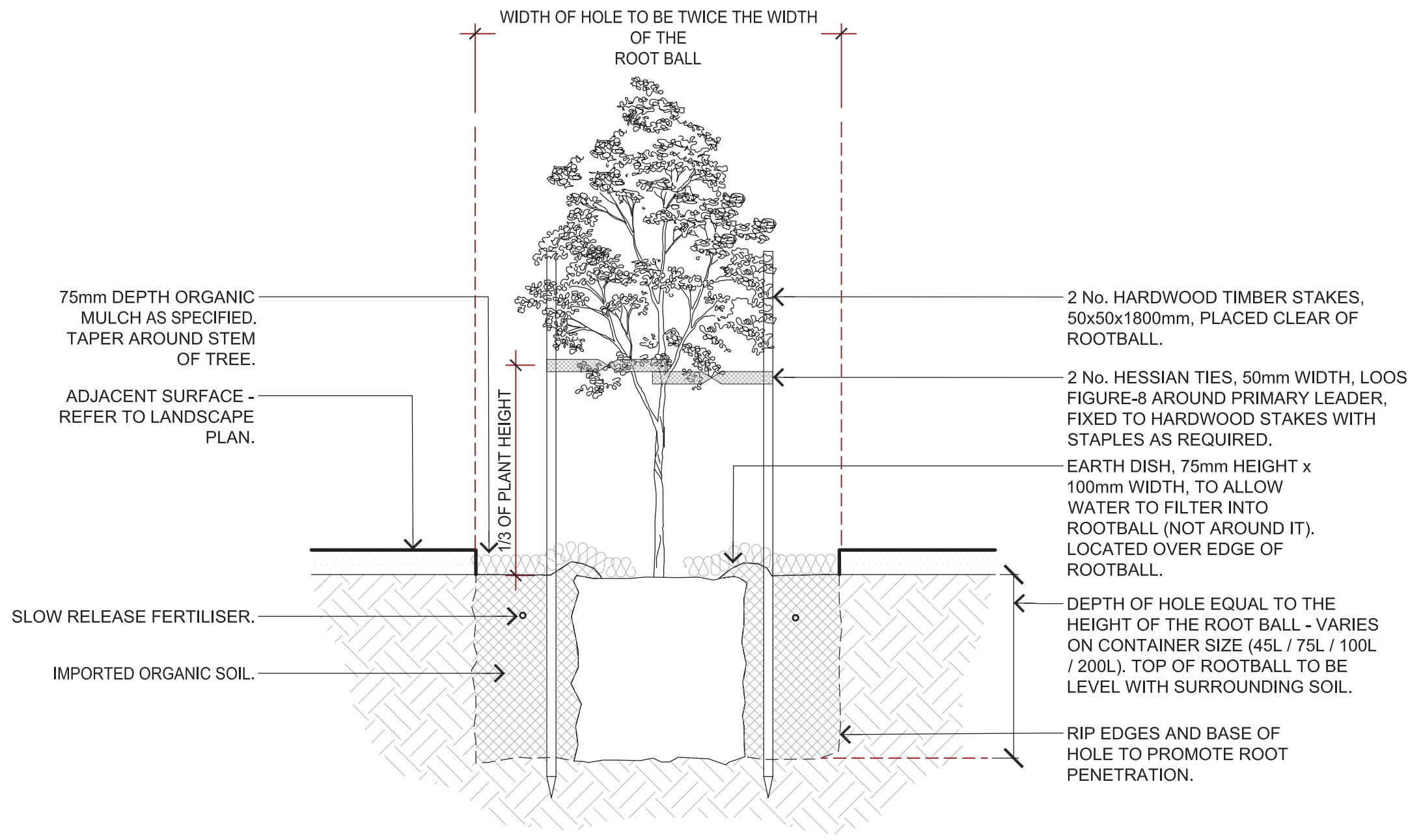
Mass Planting (Built-in Podium Planters) - Typical Detail:

Scale: 1:10 @A1



Mass Planting (Stand-alone Podium Planters) - Typical Detail:

Scale: 1:10 @A1



Tree Planting (Deep soil) - Typical Detail:

Scale: 1:20 @A1



T 0413 445 096
E info@paddockstudio.com.au
G 46-52 Meagher Street
Chippendale NSW 2008
www.paddockstudio.com.au



Registered Landscape Architects
ALA 1761
ABN 82 628 312 274
ACN 628 312 274

Copyright Paddock Studio Pty Ltd 2018. Copyright in whole and every part belongs to Paddock Studio Pty Ltd. Not to be reproduced in any part without written agreement from Paddock Studio Pty Ltd.
Not for pricing or construction. Drawing to be read in conjunction with all relevant project and consultant documentation.

Issue: A Date: 28.09.23 Reason: For DA Submission

Reviewed by: DW

Project: Federal Hotel Mudgee
34-36 Inglis Street, Mudgee NSW 2850
Client: IMG Group

Title: Maintenance Requirements & Management Plan
Typical Planting Details

Project No.: 2401
Date: 28.09.2023
Scale: As shown @ A1

Drawing: 2401-05
Issue: A