

Weeds Management

Controlling invasive plant and animal species is a key strategy in Council's Community Plan. Weeds are a major threat to our unique natural environment, threatening the survival of hundreds of native plants and animals in NSW alone. They also impact on the price of food, human health through allergies and asthma, recreational activities and the NSW economy.

WHAT IS A WEED?

A weed is generally defined as a wild plant growing in an unwanted area. Priority weeds in the Mid-Western Region are plants that have the potential to pose a biosecurity risk to human health, the economy, the liveability of our region and the environment.

The administration of priority weed control is a NSW Government responsibility under the Biosecurity Act 2015. The Act is implemented and enforced by the Local Control Authority, in this case Mid-Western Regional Council.

WHAT IS YOUR RESPONSIBILITY?

Under the Biosecurity Act 2015, landowners are expected to reasonably know about the priority weeds that may occur on their land and have a management plan in place to prevent, eliminate or minimise the priority weeds that may occur on their land.

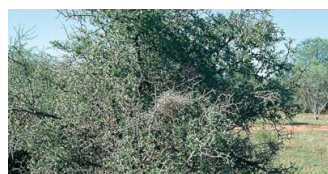
WHAT CAN YOU DO?

There are simple things you can do to help reduce the major impacts of weeds, and limit their spread.

Early detection and surveillance offer the most strategic and cost effective form of weeds management. Early detection of weeds increases the likelihood that control will be successful and reduces costs as infestations can be treated when they are less extensive.

You can help with early detection of weedy plants by knowing what to look for, where to look, when to look, and who to contact.

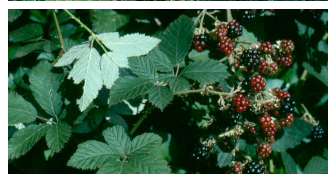
PRIORITY WEEDS IN THE REGION



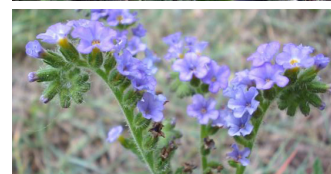
AFRICAN BOXTHORN



STICKY NIGHTSHADE



BLACKBERRY



BLUE HELIOTROPE



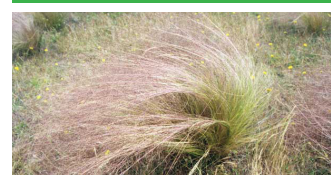
COMMON PRICKLY PEAR



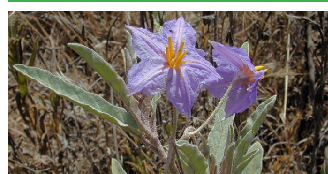
COOLATAI GRASS



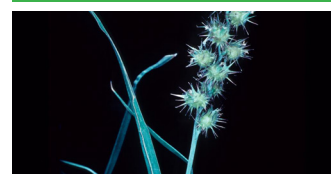
ST JOHN'S WORT



SERRATED TUSSOCK



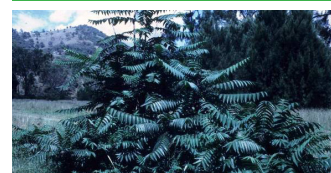
SILVER LEAF NIGHTSHADE



SPINY BURR GRASS



SWEET BRIAR



TREE OF HEAVEN

Source: <https://www.dpi.nsw.gov.au/biosecurity/weeds>

Images courtesy of <https://weeds.dpi.nsw.gov.au>



HOW CAN COUNCIL HELP?

Council's Weeds Team provides a range of free services in the management of weeds including in the identification of weeds, advice on the safe handling of chemicals, effective weed control techniques and tailored weed management plans.

GET THE FREE WEEDS APP

NSW Department of Primary Industries has developed an app that provides key information to help users reduce the impact of over 300 weeds in NSW, called NSW Weedwise.

Users, ranging from home gardeners and residents to farmers, land managers and weeds professionals, can search or browse weed names (common or scientific); recognise a weed by its physical description and image gallery; and find out about its impacts, where it occurs, how it spreads and its preferred habitat.

Control options are described for each weed and the herbicides registered for control by the Australian

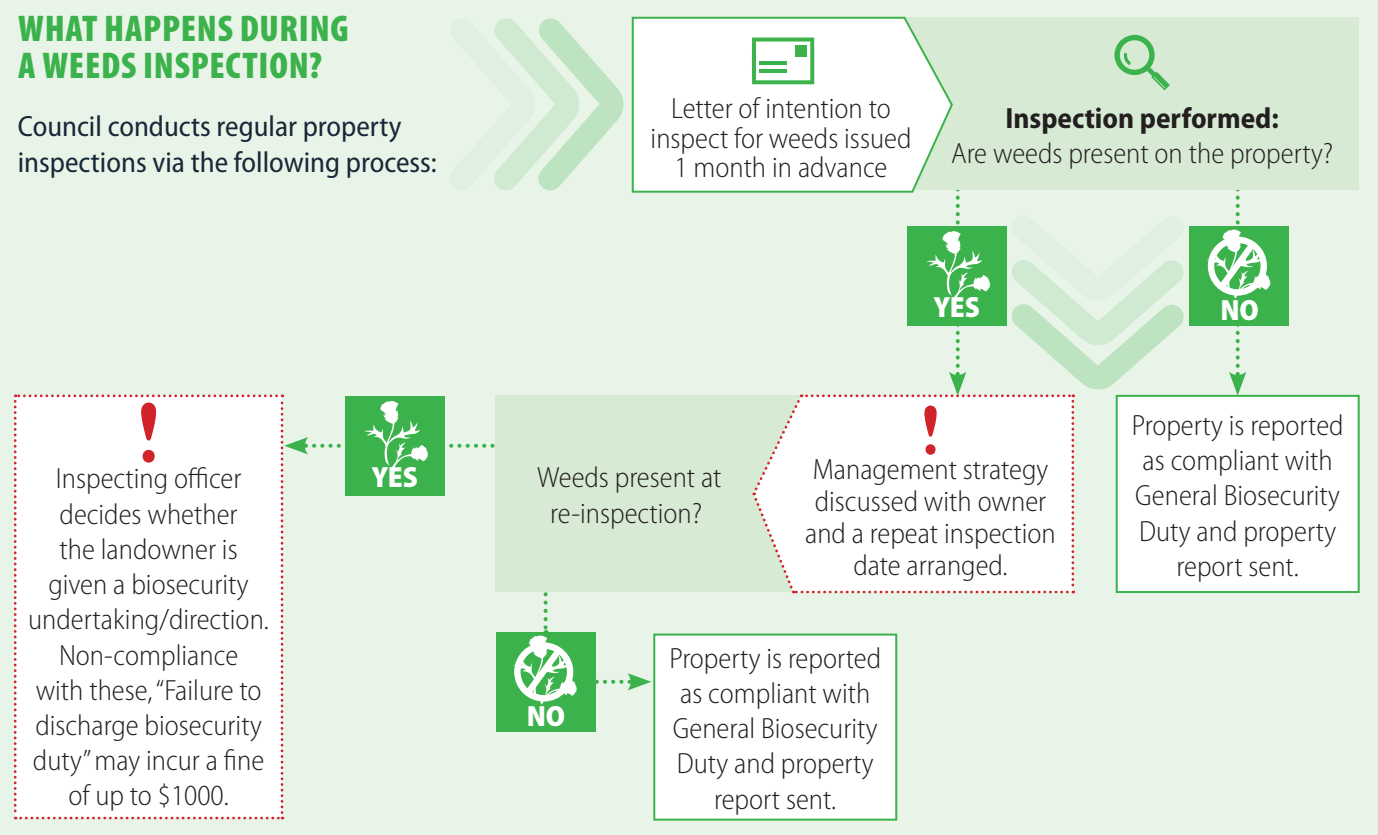
Pesticide and Veterinary Medicines Authority are listed, including application rates and techniques, and any minor-use permits that must be complied with.

General, State or Regional biosecurity duties under the Biosecurity Act 2015 are displayed for each weed.



WHAT HAPPENS DURING A WEEDS INSPECTION?

Council conducts regular property inspections via the following process:



FOR MORE INFORMATION

Visit Council's website www.midwestern.nsw.gov.au, or the Department of Primary Industries website www.dpi.nsw.gov.au and search 'weeds'. Council's Weeds Team are available to assist on 6378 2939 or at weeds.admin@midwestern.nsw.gov.au

DISCLAIMER

The information contained in this fact sheet is general in nature and should not be relied upon as the complete source of information to be considered. This document is not intended as a substitute for consulting relevant legislation or for obtaining appropriate professional advice relevant to your particular circumstances.