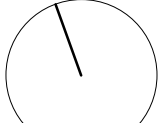
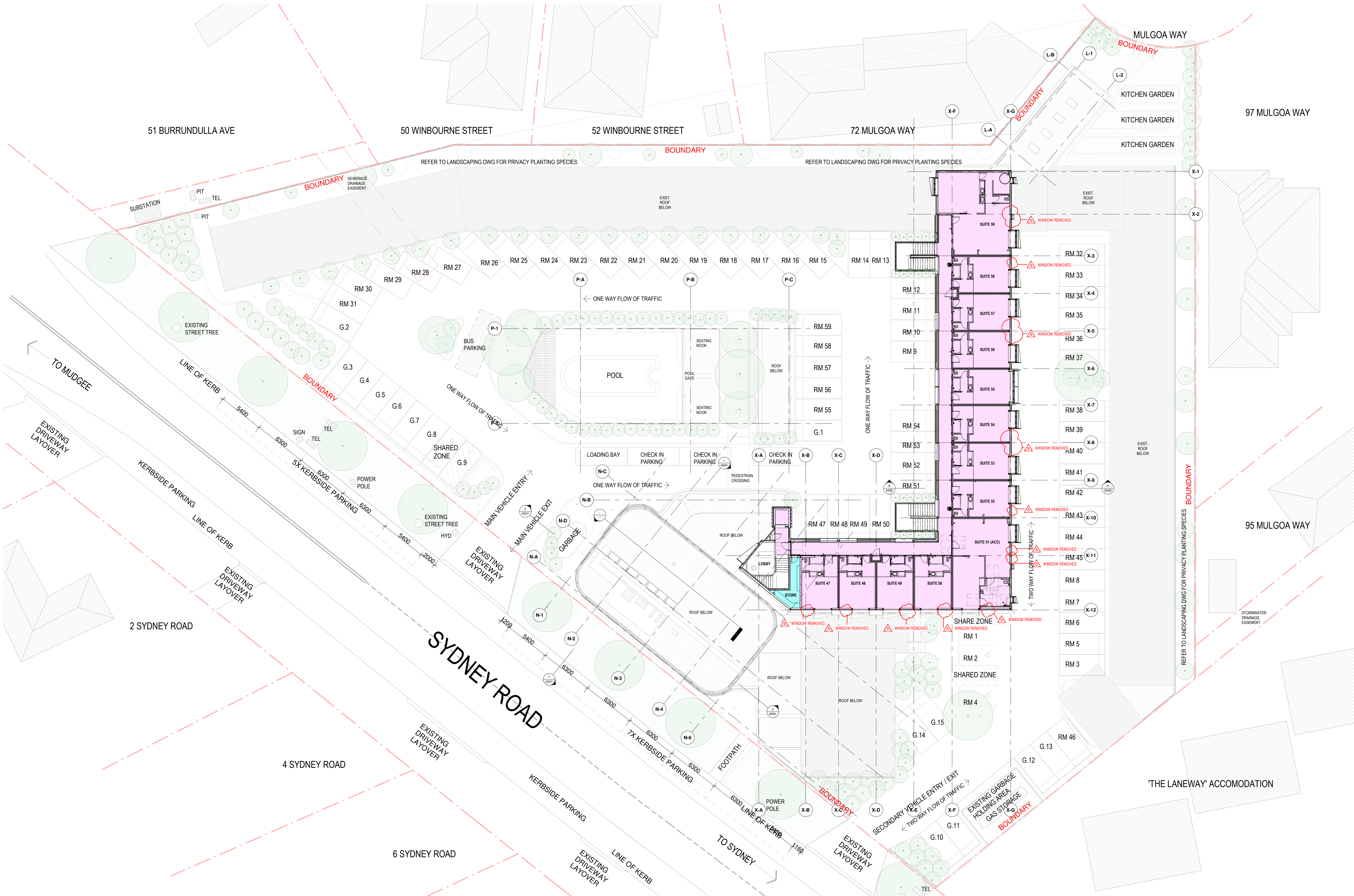


DEVELOPMENT APPLICATION MODIFICATION - SEC 4.55
PROPOSED ADEN HOTEL UPGRADE - 1 SYDNEY ROAD MUDGEE NSW 2850

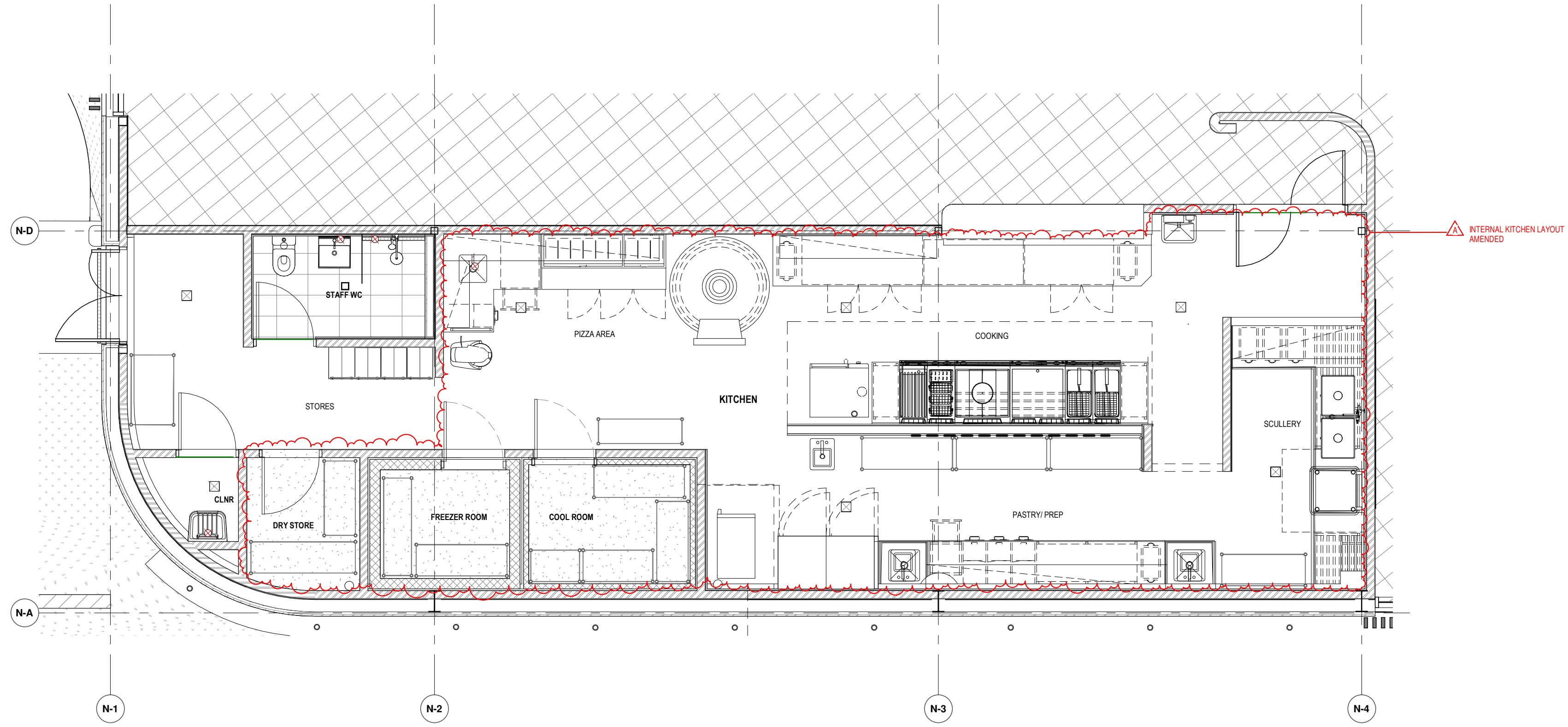


S4.55 ARCHITECTURAL DRAWING LIST		
NUMBER	TITLE	Current Revision
S455 - A001	COVER	B
S455 - A100	GROUND FLOOR	B
S455 - A101	LEVEL 1	B
S455 - A106	COMMERCIAL KITCHEN LAYOUT	A
S455 - A150	NORTHERN AND SOUTHERN ELEVATIONS	B
S455 - A151	EASTERN AND WESTERN ELEVATIONS	B
S455 - A152	ELEVATION/ SECTION SOUTH	B

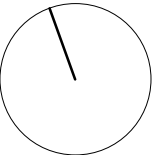


SCALE: 1: 200 @ A1	JOB NO: 2020
DRAWING No.	REV
S455 - A101	B

REV	DESCRIPTION	DATE
B	D.A. AMENDMENT 2 (SEC 4.55)	18/04/2023
A	D.A. AMENDMENT (SEC 4.55)	07/07/2022
ISSUE	AMENDMENT DESCRIPTION	DATE



COMMERCIAL KITCHEN LAYOUT



REV	DESCRIPTION	DATE
A	D.A. AMENDMENT 2 (SEC 4.55)	18/04/2023
ISSUE	AMENDMENT DESCRIPTION	DATE



REV	AMENDMENT DESCRIPTION	DATE
B	D.A. AMENDMENT 2 (SEC 4.55)	18/04/2023
A	D.A. AMENDMENT (SEC 4.55)	07/07/2022
ISSUE	AMENDMENT DESCRIPTION	DATE