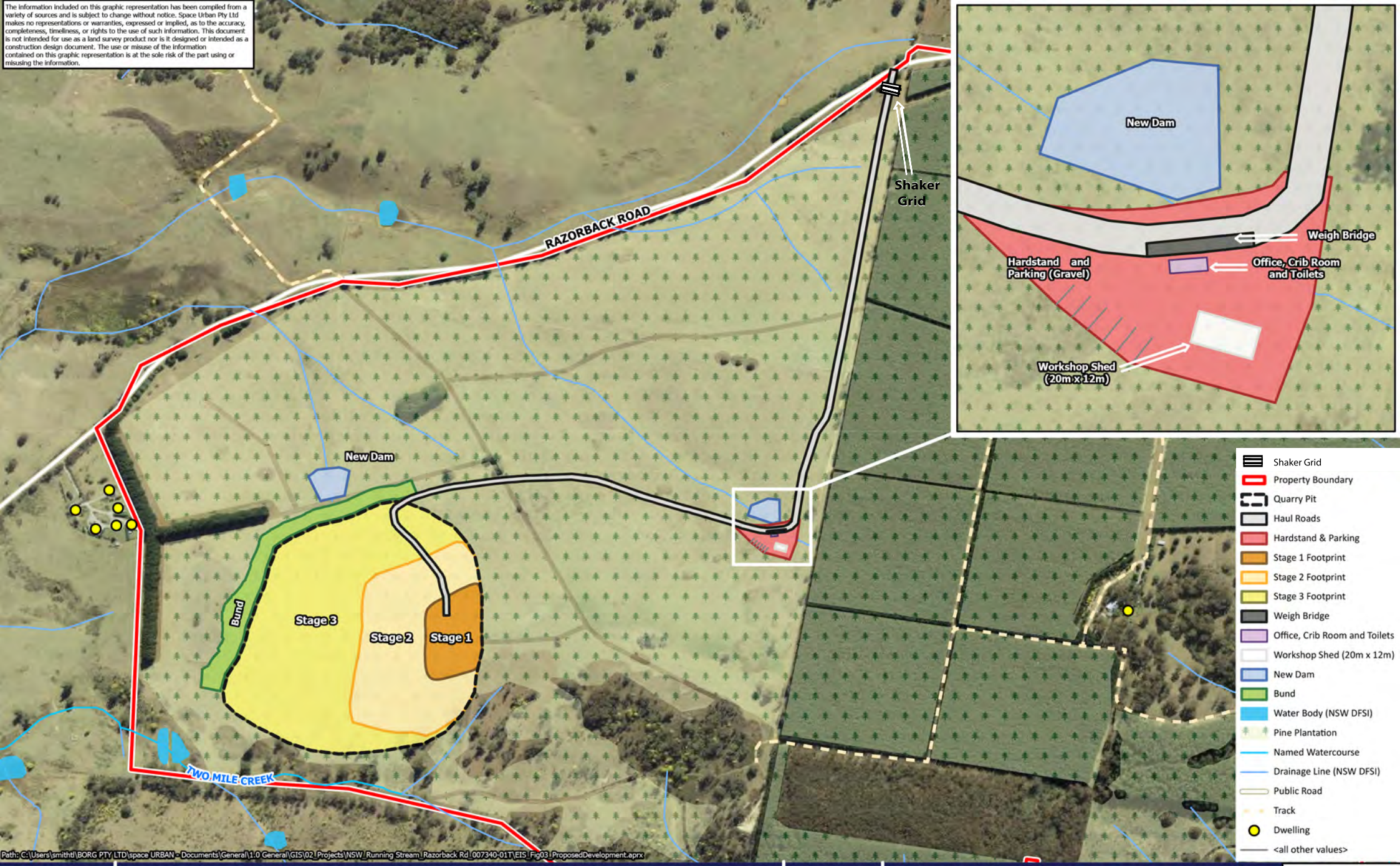


The information included on this graphic representation has been compiled from a variety of sources and is subject to change without notice. Space Urban Pty Ltd makes no representations or warranties, expressed or implied, as to the accuracy, completeness, timeliness, or rights to the use of such information. This document is not intended for use as a land survey product nor is it designed or intended as a construction design document. The use or misuse of the information contained on this graphic representation is at the sole risk of the part using or misusing the information.



Path: C:\Users\smitht\BORG PTY LTD\space URBAN - Documents\General\1.0 General\GIS\02\Projects\NSW_Running Stream\ Razorback Rd_007340-01T\EIS\Fig03\ProposedDevelopment.aprx

Figure:
6

Proposed Development

Environmental Impact Statement
39 Razorback Road, Running Stream NSW



Source: © Department of Customer Service 2020, VGT - 2020, Wedgetail Project Consulting - 2020, NSW DFSI - 2021



User: smitht
Version 2
Date: 01-03-2023 5.22pm

Scale: 1:10,000



Space Urban Pty Ltd
ABN: 43 644 377 293

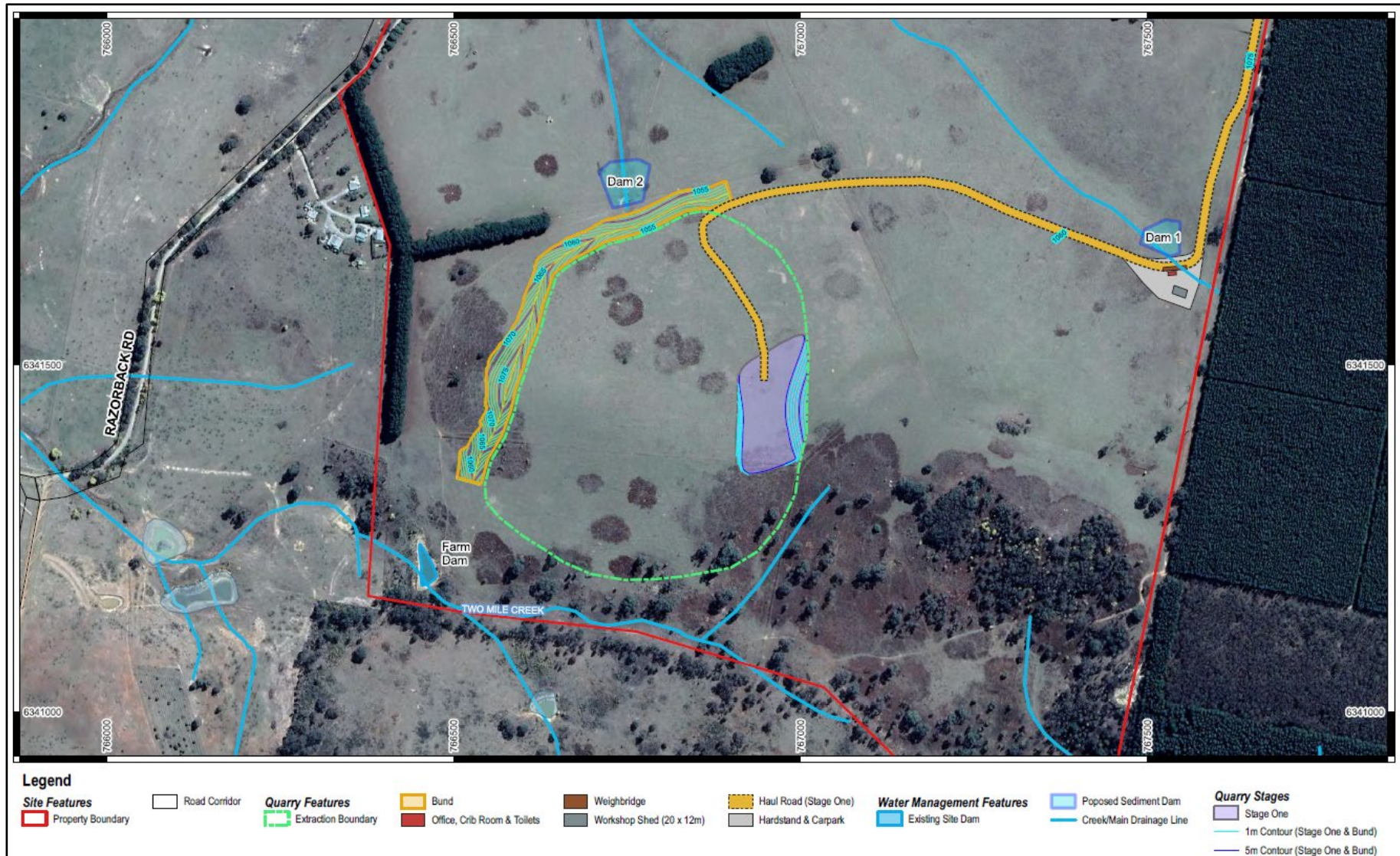


Figure 8: Stage 1 - Quarry Design



Figure 9: Stage 2 - Quarry Design

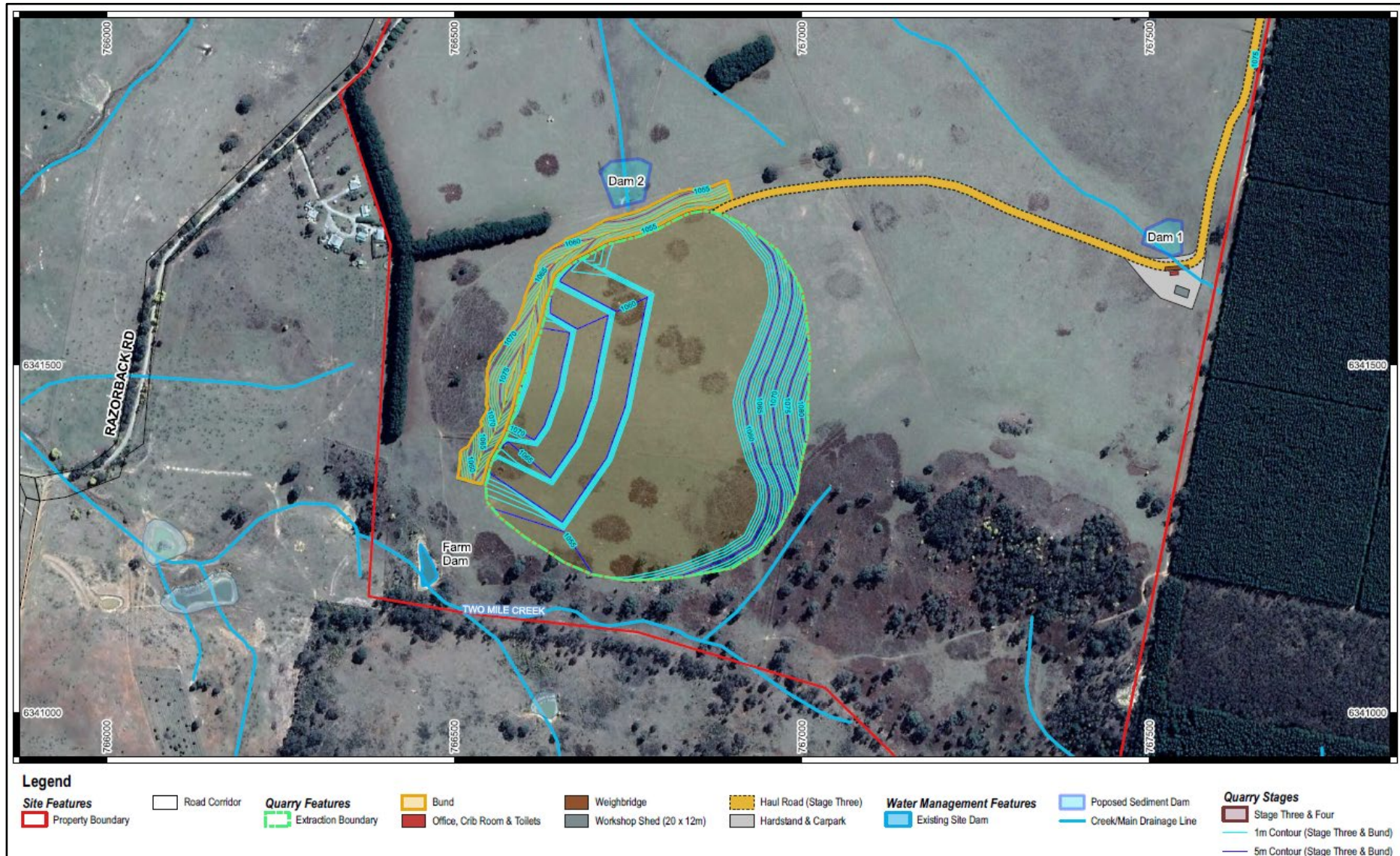


Figure 10: Stage 3 & 4 - Quarry Design

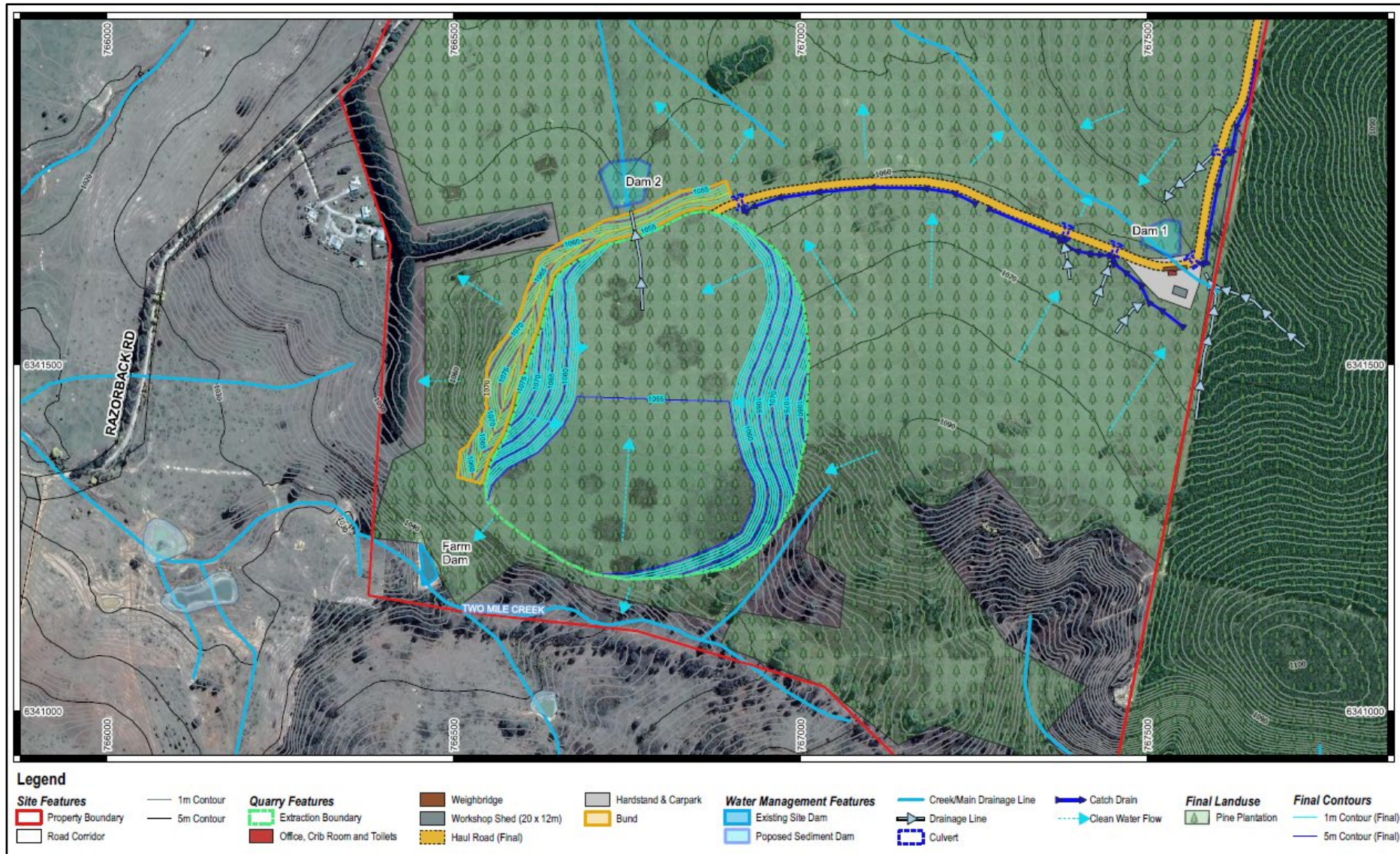


Figure 14: Final Landform