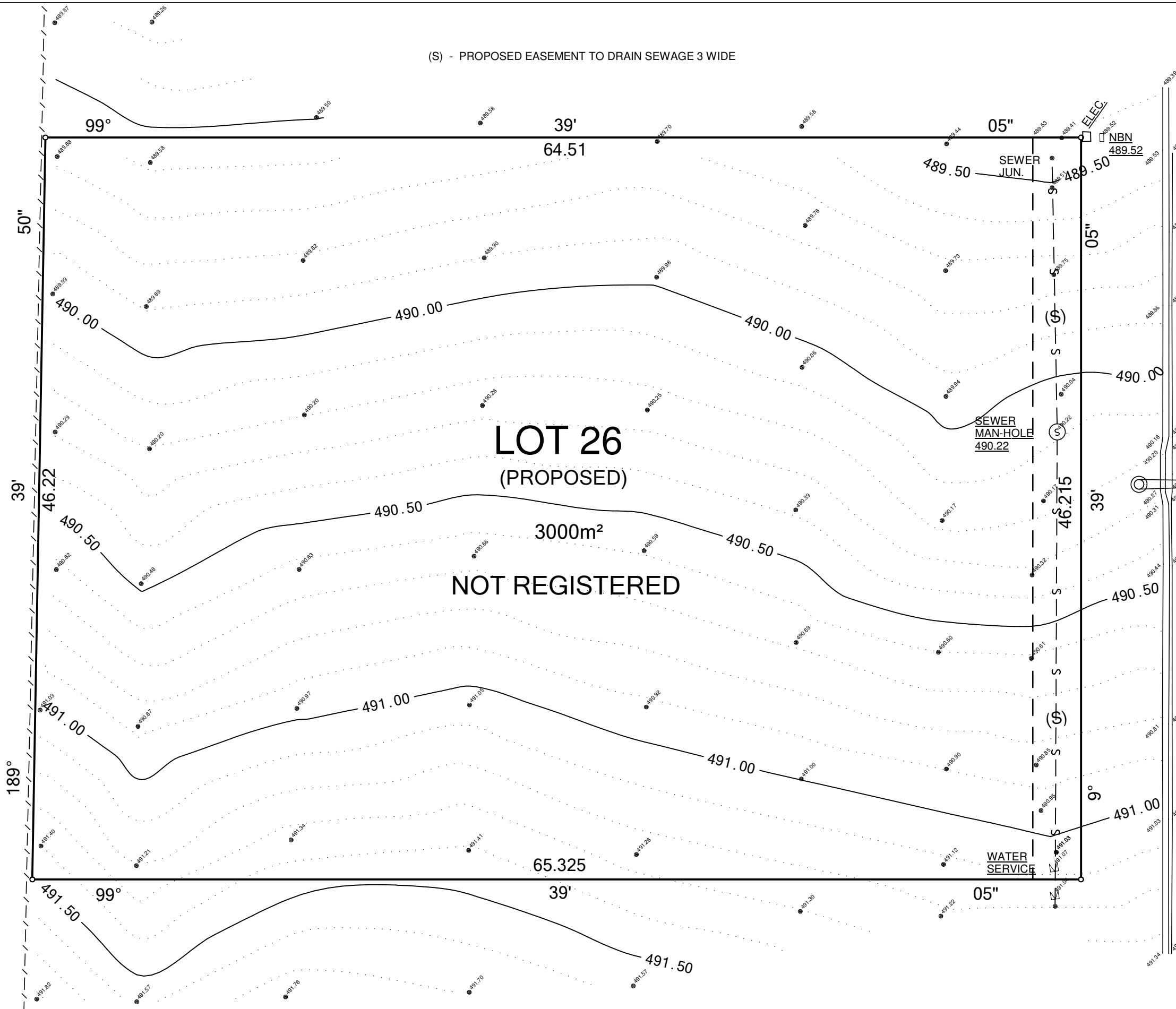


(S) - PROPOSED EASEMENT TO DRAIN SEWAGE 3 WIDE



**NOTE**

THIS PLAN HAS BEEN PREPARED FOR NATURAL BUILD FROM A COMBINATION OF FIELD SURVEY AND INFORMATION SUPPLIED FOR THE DEVELOPER FOR THE PURPOSE OF SHOWING PHYSICAL FEATURES OF THE LAND TO ASSIST IN DESIGNING FUTURE DEVELOPMENT AND SHOULD BE NOT USED FOR ANY OTHER PURPOSE THE BOUNDARIES SHOWN HEREON WERE NOT VERIFIED OR MARKED AT THE TIME OF SURVEY BUT WERE DETERMINED BY EXISTING PRELIMINARY DIMENSIONS AND OCCUPATION, NOT BY FIELD MEASUREMENTS. AS SUCH THESE DIMENSIONS COULD BE OUT OF DATE AND INCORRECT

**BENCHMARK:**  
STEEL BASE OF LIGHT-POLE  
RL: 490.38

**GENERAL NOTES:**

This drawing and its contents are subject to return on demand and may not be copied or disclosed to any third party or used directly or indirectly for any purpose other than as determined in writing by Imrie, Astley & Associates.

- \* All distances are in metres
- \* DO NOT SCALE - use written dimensions