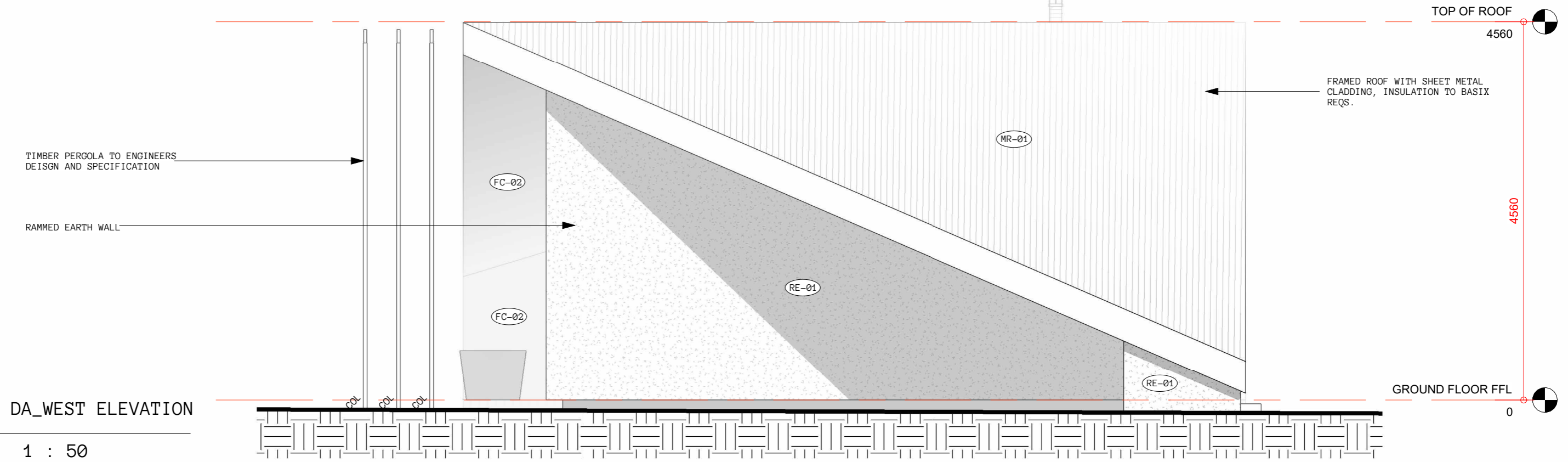


DA_EAST ELEVATION

1
DA08

1 : 50



DA_WEST ELEVATION

2
DA08

1 : 50

DA SUBMISSION



Cameron Anderson Architects | ABN 78385853147
NSW Nominated Architect | Cameron Anderson NSW 8560

5 Lovejoy St, Mudgee, NSW
PO Box 3, Mudgee NSW, 2850
p. 02 6372 6690
m. 0409 257 688

info@caarch.com.au
www.caarch.com.au

Check all dimensions & site conditions prior to the commencement of any work, the purchase or ordering of any materials, fittings, plant, services or equipment & the preparation of shop drawings and/or the fabrication of any components.

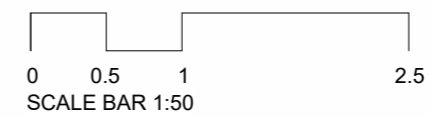
Do not scale off drawings - refer to figured dimensions only. Any discrepancies shall immediately be referred to the architect for clarification.

All drawings may not be reproduced or distributed without prior permission from the architect.

Copyright in all drawings and documents prepared by Cameron Anderson Architects & any works executed from those documents remain the property of Cameron Anderson Architects

REV	DESCRIPTION	DATE
01	DRAFT DA ISSUE	29.03.2022
02	DA ISSUE	04.04.2022

Scale 1 : 50



MOUNT PLEASANT

99 MOUNT PLEASANT LANE, BUCKAROO NSW 2850
LOT 147, DP 755418

ELEVATIONS 02

Project No. Status Drawing No. Revision

352 DD DA08 02