

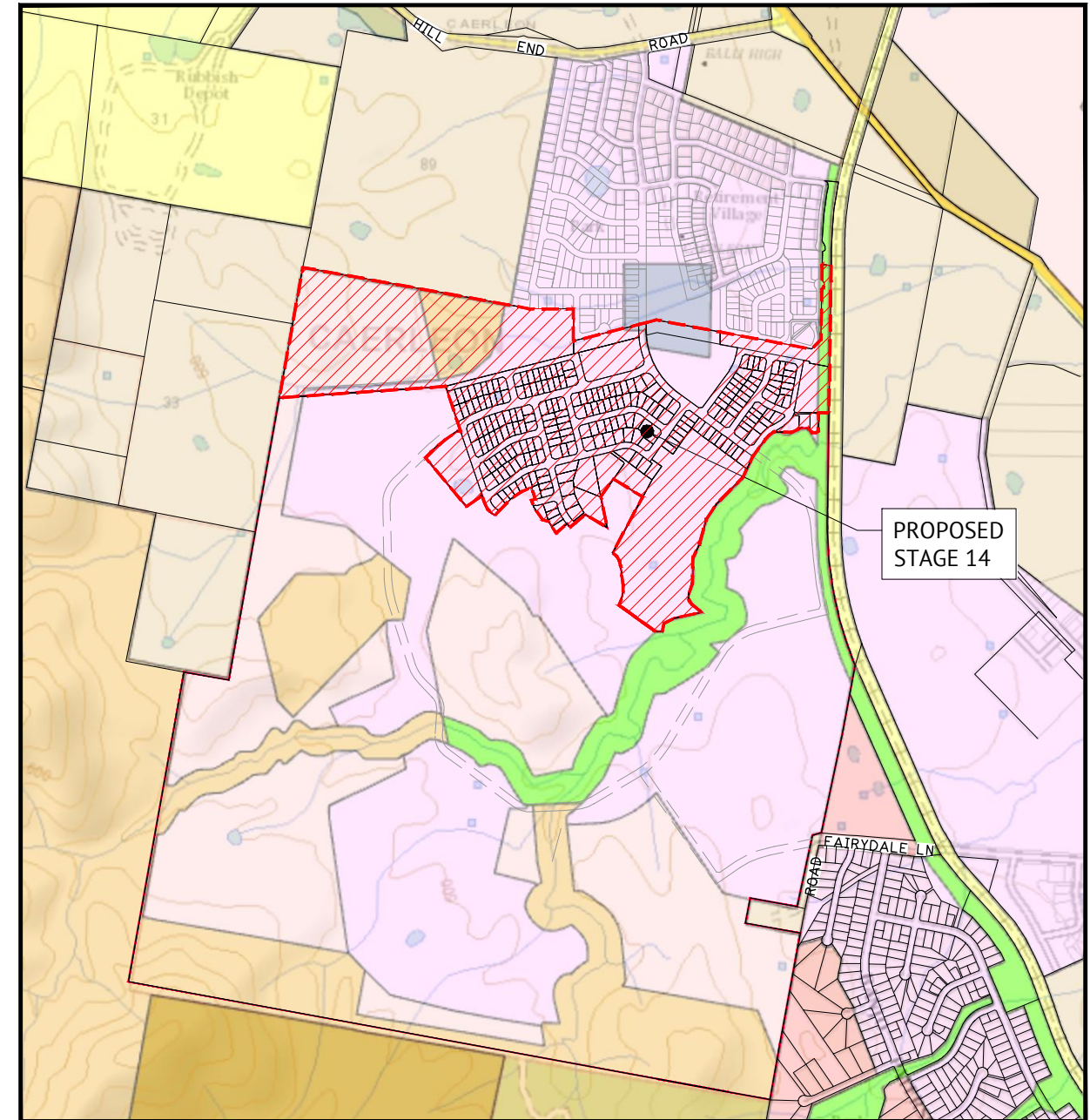


# "CAERLEON ESTATE", MUDGEES

## STAGE 14 - DEVELOPMENT APPLICATION



SCHEDULE OF DRAWINGS	
DRAWING No.	DRAWING TITLES
DA01	COVER SHEET - SITE LOCALITY PLAN
DA02	EXISTING SURVEY
DA03	ZONING BOUNDARY
DA04	MINIMUM LOT SIZE
DA05	STAGING PLAN
DA06	PROPOSED LOT MIX
DA07	PROPOSED OVERALL LOT LAYOUT 1 OF 5
DA08	PROPOSED LOT LAYOUT 2 OF 5
DA09	PROPOSED LOT LAYOUT 3 OF 5
DA10	PROPOSED LOT LAYOUT 4 OF 5
DA11	PROPOSED LOT LAYOUT 5 OF 5
DA12	PROPOSED ROAD LAYOUT CONCEPT
DA13	PROPOSED PATHWAY NETWORK
DA14	PROPOSED STORMWATER CATCHMENT PLAN
DA15	PROPOSED BASINS CONCEPT
DA16	PROPOSED STORMWATER NETWORK CONCEPT PLAN
DA17	PROPOSED DRAINAGE CHANNEL & TYPICAL SECTIONS
DA18	PROPOSED CULVERT CROSSING AND TYPICAL SECTION
DA19	PROPOSED SEWER CATCHMENT NETWORK PLAN
DA20	PROPOSED SEWER CONCEPT
DA21	PROPOSED WATER CONCEPT



- NOTES**
- THE DIMENSIONS, AREAS, EASEMENTS & OTHER DETAILS SHOWN ON THIS PLAN (BASED ON PRELIMINARY DESIGN INFORMATION) ARE APPROXIMATE ONLY & ARE SUBJECT TO FIELD SURVEY & THE FINAL APPROVALS OF COUNCIL & SERVICING AUTHORITIES.
  - LOTS MAY BE SUBJECT TO FUTURE SERVICES & STREET LANDSCAPING DESIGN.
  - ZONE IMAGES EXTRACT FROM NSW PLANNING PORTAL ePLANNING SPATIAL VIEWER (26/02/2022)

LOCALITY PLAN  
SUBURB: "CAERLEON ESTATE"  
SCALE N.T.S.

**NOT FOR CONSTRUCTION**

DATE	REV	DESCRIPTION	REC	APP
15/03/22	B	ISSUED FOR COUNCIL APPROVAL	PS	MT
11/03/22	A	ISSUED FOR REVIEW - PROPOSED SUBDIVISION STAGE 14 - 237 RESIDENTIAL LOTS	PS	MT

**ORAN PARK OFFICE**  
SUITE 301, LEVEL 3 ORAN PARK PODIUM  
351 ORAN PARK DRIVE  
ORAN PARK, NSW 2570  
PH: (02) 4632 6500  
WEB: [www.premise.com.au](http://www.premise.com.au)

DESIGNED	P. SITHIRAJVONGSA
CHECKED	S. HOYNES
PROJECT MANAGER	M. THORNE

SCALE  
NTS

**DRAFT**

ORIGINAL SHEET SIZE A1

CLIENT	CAERLEON MUDGEES PTY LTD
PROJECT	STAGE 14 - DEVELOPMENT APPLICATION
LOCATION	"CAERLEON ESTATE", MUDGEES
SHEET TITLE	COVER SHEET - SITE LOCALITY PLAN

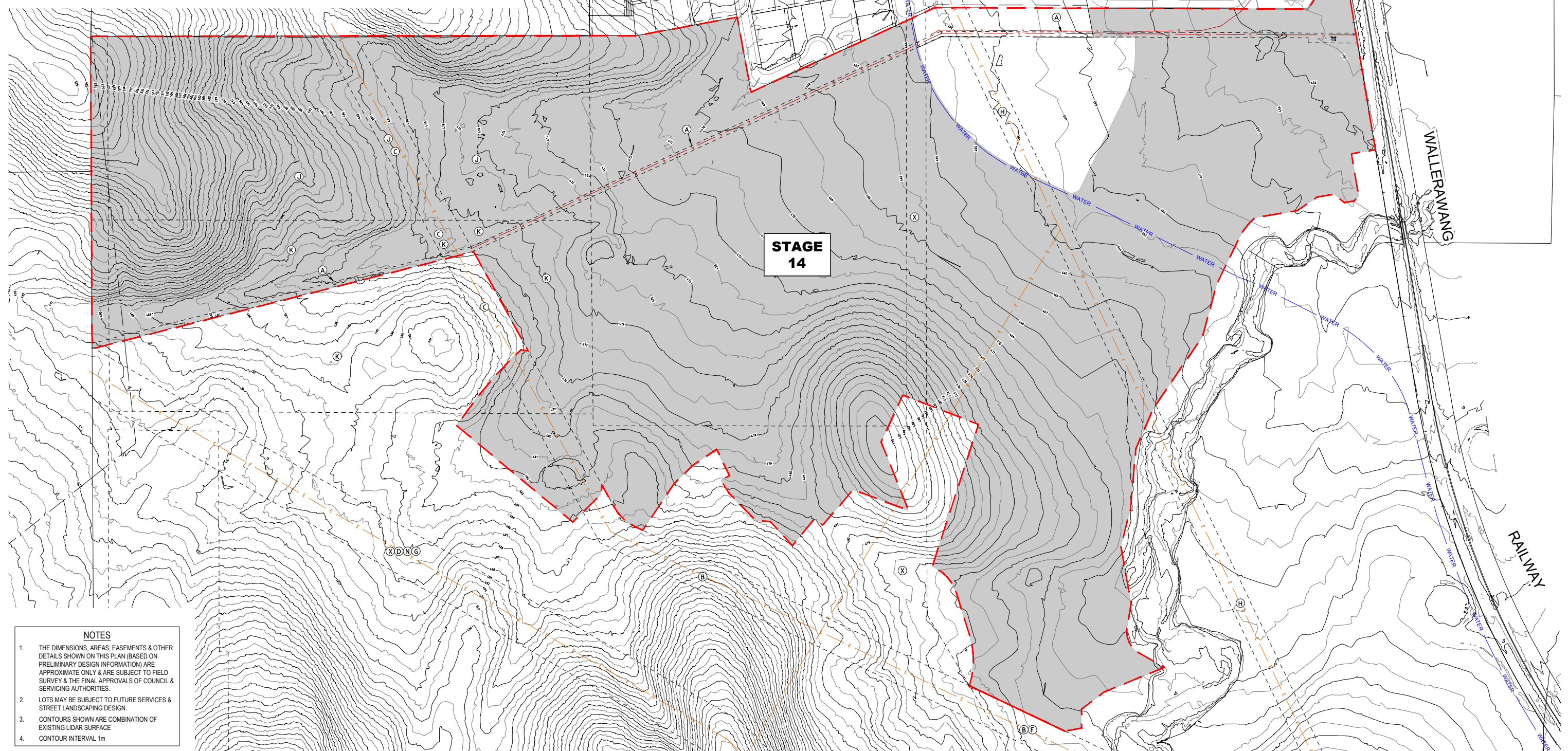
JOB CODE	319171-31
SHEET NUMBER	DA01
REV	B



- (A) EASEMENT FOR RISING MAIN AND TO DRAIN SEWAGE 5 AND 10 WIDE (DP 1184299)
- (B) EASEMENT FOR TRANSMISSION LINE 30.48 WIDE (L388735)
- (C) EASEMENT FOR TRANSMISSION LINE 30.48 WIDE (Bk2922 No.648)
- (D) EASEMENT FOR TRANSMISSION LINE 30 WIDE (Bk4601 No.843)
- (F) EASEMENT FOR TRANSMISSION LINE 30 WIDE (U387668)
- (G) EASEMENT FOR TRANSMISSION LINE (Q434435)
- (H) EASEMENT FOR OVERHEAD POWERLINES 20 WIDE & VARIABLE WIDTH (DP 1260317)
- (J) COVENANT (Bk2922 No.648)
- (K) COVENANT (Bk3295 No.239)
- (E) EASEMENT FOR MULTIPURPOSE ELECTRICAL INSTALLATION 4.2 WIDE
- (S) EASEMENT TO DRAIN SEWAGE 3 WIDE
- (N) EASEMENT FOR TRANSMISSION LINE 45 WIDE (Bk3295 No.237)
- (U) EASEMENT FOR UNDERGROUND POWERLINES 2 WIDE
- (X) LAND EXCLUDES MINERALS - SEE CROWN GRANTS

**LEGEND**

- STAGE 14 SUBJECT SITE
- EXISTING SEWER RISING MAIN
- EXISTING ELECTRICITY
- EXISTING WATERMAIN



**NOTES**

1. THE DIMENSIONS, AREAS, EASEMENTS & OTHER DETAILS SHOWN ON THIS PLAN (BASED ON PRELIMINARY DESIGN INFORMATION) ARE APPROXIMATE ONLY & ARE SUBJECT TO FIELD SURVEY & THE FINAL APPROVALS OF COUNCIL & SERVICING AUTHORITIES.
2. LOTS MAY BE SUBJECT TO FUTURE SERVICES & STREET LANDSCAPING DESIGN.
3. CONTOURS SHOWN ARE COMBINATION OF EXISTING LIDAR SURFACE
4. CONTOUR INTERVAL 1m

**NOT FOR CONSTRUCTION**

DATE	REV	DESCRIPTION	REC	APP
15/03/22	B	ISSUED FOR COUNCIL APPROVAL	PS	MT
11/03/22	A	ISSUED FOR REVIEW - PROPOSED SUBDIVISION STAGE 14 - 237 RESIDENTIAL LOTS	PS	MT

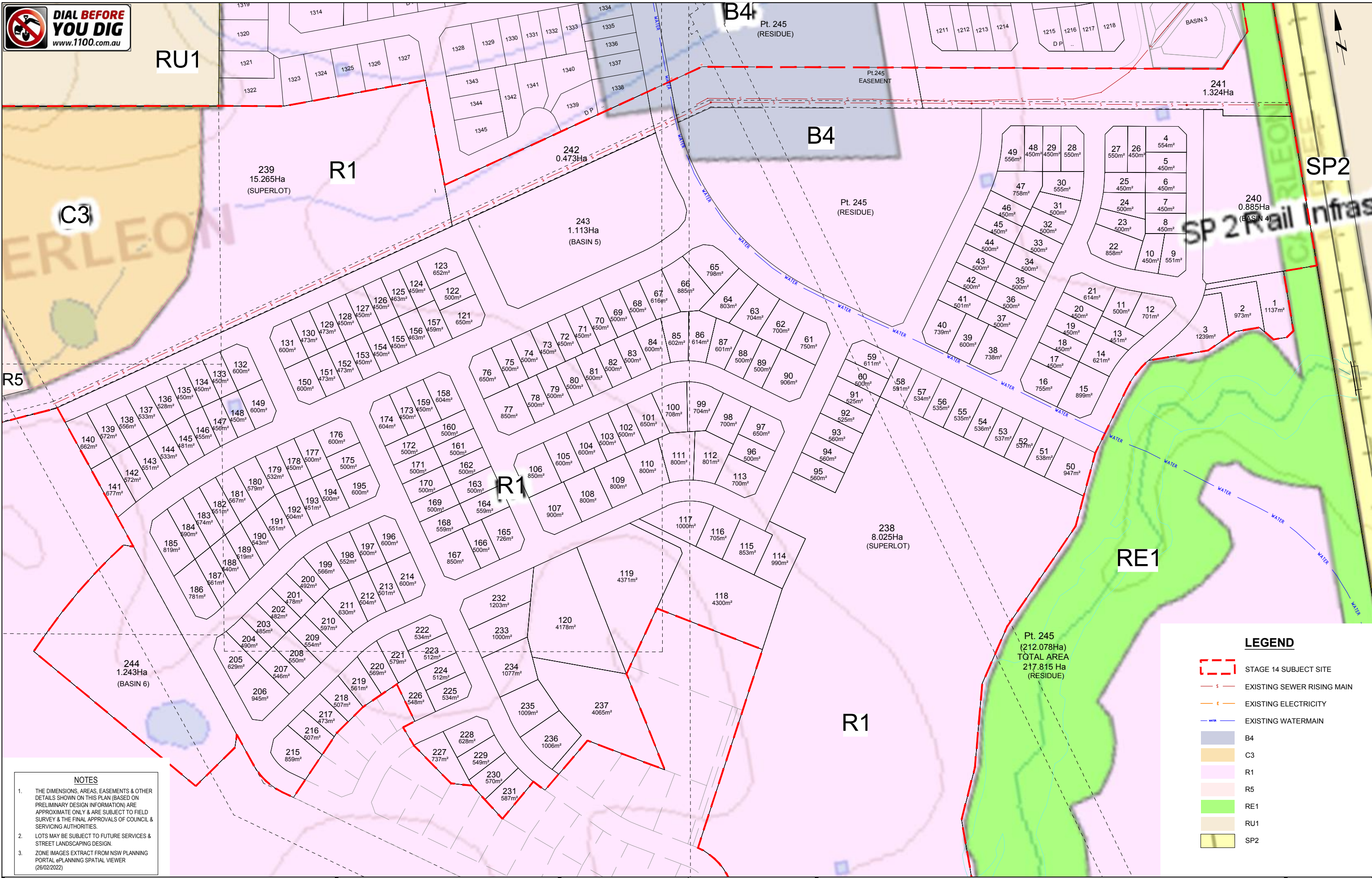
**Premise**  
 ORAN PARK OFFICE  
 SUITE 301, LEVEL 3 ORAN PARK PODIUM  
 351 ORAN PARK DRIVE  
 ORAN PARK, NSW 2570  
 PH: (02) 4632 6500  
 WEB: www.premise.com.au

DESIGNED  
P. SITHIRAJVONGSA  
 CHECKED  
S. HOYNES  
 PROJECT MANAGER  
M. THORNE

SCALE  
0 40 80 120m  
 SCALE 1:2000 (A1)  
**DRAFT**  
 ORIGINAL SHEET SIZE A1

CLIENT  
**CAERLEON MUDGE PTY LTD**  
 PROJECT  
**STAGE 14 - DEVELOPMENT APPLICATION**  
 LOCATION  
**"CAERLEON ESTATE", MUDGE**  
 SHEET TITLE  
**EXISTING SURVEY**

JOB CODE  
**319171-31**  
 SHEET NUMBER  
**DA02**  
 REV  
**B**



**NOTES**

- THE DIMENSIONS, AREAS, EASEMENTS & OTHER DETAILS SHOWN ON THIS PLAN (BASED ON PRELIMINARY DESIGN INFORMATION) ARE APPROXIMATE ONLY & ARE SUBJECT TO FIELD SURVEY & THE FINAL APPROVALS OF COUNCIL & SERVICING AUTHORITIES.
- LOTS MAY BE SUBJECT TO FUTURE SERVICES & STREET LANDSCAPING DESIGN.
- ZONE IMAGES EXTRACT FROM NSW PLANNING PORTAL ePLANNING SPATIAL VIEWER (26/02/2022)

**LEGEND**

- STAGE 14 SUBJECT SITE
- EXISTING SEWER RISING MAIN
- EXISTING ELECTRICITY
- EXISTING WATERMAIN
- B4
- C3
- R1
- R5
- RE1
- RU1
- SP2

NOT FOR CONSTRUCTION				
DATE	REV	DESCRIPTION	REVISIONS	
15/03/22	B	ISSUED FOR COUNCIL APPROVAL	PS	MT
11/03/22	A	ISSUED FOR REVIEW - PROPOSED SUBDIVISION STAGE 14 - 237 RESIDENTIAL LOTS	PS	MT
			REC	APP

**Premise**

**ORAN PARK OFFICE**  
 SUITE 301, LEVEL 3 ORAN PARK PODIUM  
 351 ORAN PARK DRIVE  
 ORAN PARK, NSW 2570  
 PH: (02) 4632 6500  
 WEB: www.premise.com.au

DESIGNED  
P. SITHIRAJVONGSA

CHECKED  
S. HOYNES

PROJECT MANAGER  
M. THORNE

SCALE  
0 25 50 75m

SCALE 1:1250 (A1)

**DRAFT**

ORIGINAL SHEET SIZE A1

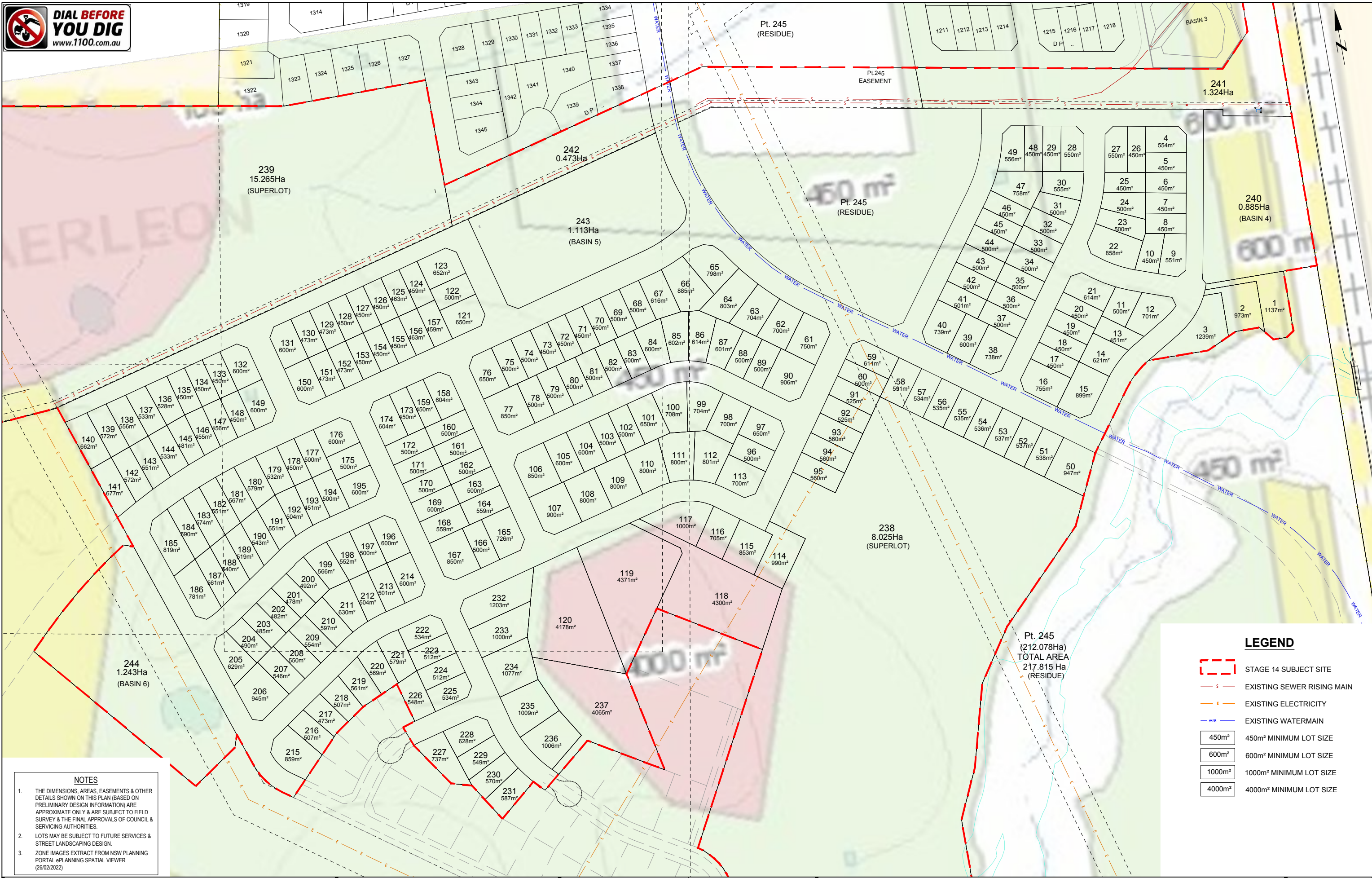
CLIENT  
**CAERLEON MUDGEES PTY LTD**

PROJECT  
**STAGE 14 - DEVELOPMENT APPLICATION**

LOCATION  
**"CAERLEON ESTATE", MUDGEES**

SHEET TITLE  
**ZONING BOUNDARY**

JOB CODE		319171-31	
SHEET NUMBER	REV		
DA03	B		



**LEGEND**

- STAGE 14 SUBJECT SITE
- EXISTING SEWER RISING MAIN
- EXISTING ELECTRICITY
- EXISTING WATERMAIN
- 450m<sup>2</sup> 450m<sup>2</sup> MINIMUM LOT SIZE
- 600m<sup>2</sup> 600m<sup>2</sup> MINIMUM LOT SIZE
- 1000m<sup>2</sup> 1000m<sup>2</sup> MINIMUM LOT SIZE
- 4000m<sup>2</sup> 4000m<sup>2</sup> MINIMUM LOT SIZE

**NOTES**

- THE DIMENSIONS, AREAS, EASEMENTS & OTHER DETAILS SHOWN ON THIS PLAN (BASED ON PRELIMINARY DESIGN INFORMATION) ARE APPROXIMATE ONLY & ARE SUBJECT TO FIELD SURVEY & THE FINAL APPROVALS OF COUNCIL & SERVICING AUTHORITIES.
- LOTS MAY BE SUBJECT TO FUTURE SERVICES & STREET LANDSCAPING DESIGN.
- ZONE IMAGES EXTRACT FROM NSW PLANNING PORTAL ePLANNING SPATIAL VIEWER (26/02/2022)

<b>NOT FOR CONSTRUCTION</b>			
15/03/22	B	ISSUED FOR COUNCIL APPROVAL	PS MT
11/03/22	A	ISSUED FOR REVIEW - PROPOSED SUBDIVISION STAGE 14 - 237 RESIDENTIAL LOTS	PS MT
DATE	REV	DESCRIPTION	REC APP

**Premise**  
 ORAN PARK OFFICE  
 SUITE 301, LEVEL 3 ORAN PARK PODIUM  
 351 ORAN PARK DRIVE  
 ORAN PARK, NSW 2570  
 PH: (02) 4632 6500  
 WEB: www.premise.com.au

DESIGNED  
P. SITHIRAJVONGSA  
 CHECKED  
S. HOYNES  
 PROJECT MANAGER  
M. THORNE

SCALE  
0 25 50 75m  
 SCALE 1:1250 (A1)  
**DRAFT**  
 ORIGINAL SHEET SIZE A1

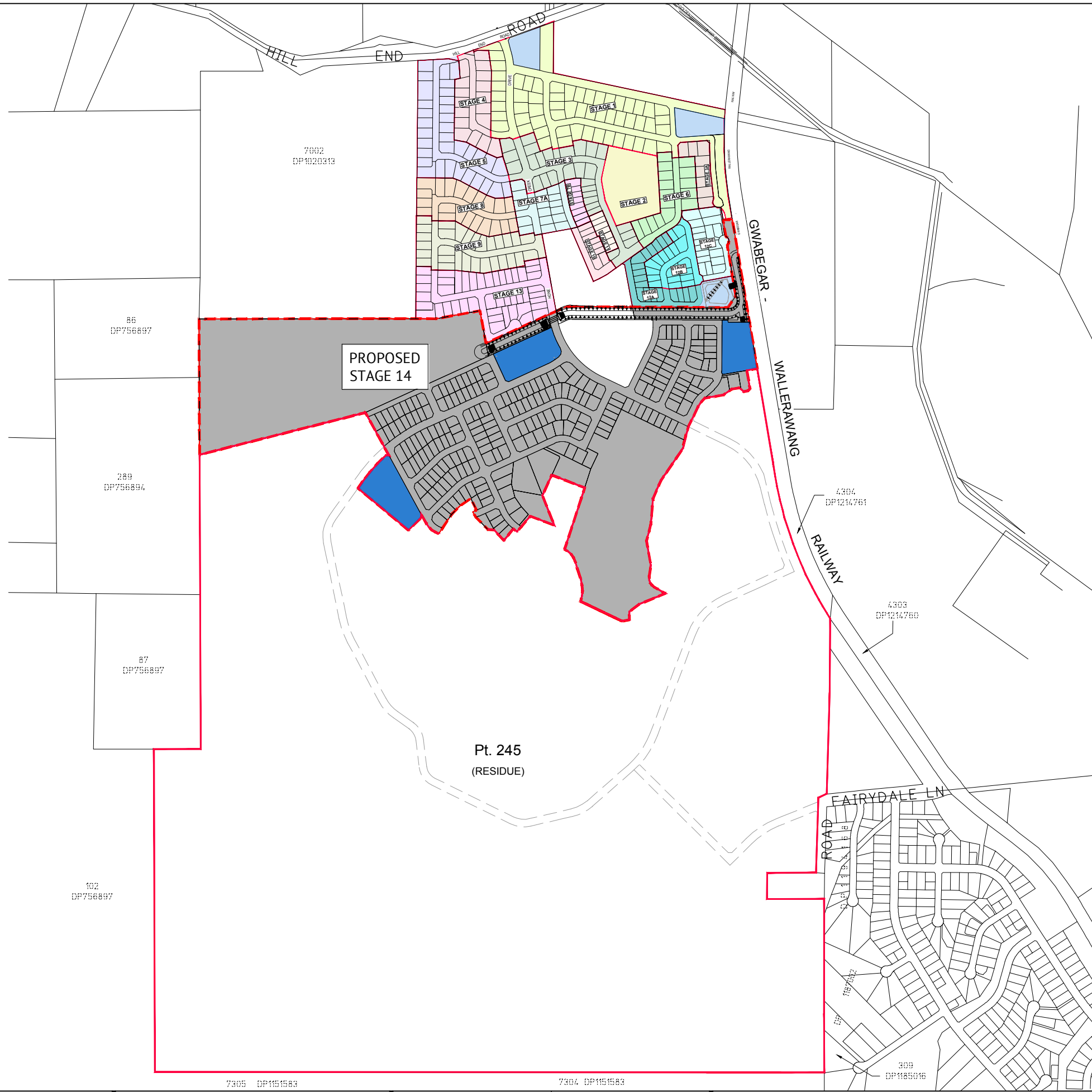
CLIENT  
**CAERLEON MUDGEY PTY LTD**

PROJECT  
**STAGE 14 - DEVELOPMENT APPLICATION**

LOCATION  
**"CAERLEON ESTATE", MUDGEY**

SHEET TITLE  
**MINIMUM LOT SIZE**

JOB CODE 319171-31	
SHEET NUMBER DA04	REV B



**LEGEND**

- STAGE 1
- STAGE 2
- STAGE 3
- STAGE 3A
- STAGE 4
- STAGE 5
- STAGE 6
- STAGE 7A
- STAGE 7B
- STAGE 8
- STAGE 9
- STAGE 10
- STAGE 11
- STAGE 12A
- STAGE 12B
- STAGE 12C
- STAGE 13
- PROPOSED STAGE 14
- FUTURE DEVELOPMENT
- BASIN AREAS

**NOTES**

1. THE DIMENSIONS, AREAS, EASEMENTS & OTHER DETAILS SHOWN ON THIS PLAN (BASED ON PRELIMINARY DESIGN INFORMATION) ARE APPROXIMATE ONLY & ARE SUBJECT TO FIELD SURVEY & THE FINAL APPROVALS OF COUNCIL & SERVICING AUTHORITIES.
2. LOTS MAY BE SUBJECT TO FUTURE SERVICES & STREET LANDSCAPING DESIGN.

NOT FOR CONSTRUCTION			
15/03/22	B	ISSUED FOR COUNCIL APPROVAL	PS MT
11/03/22	A	ISSUED FOR REVIEW - PROPOSED SUBDIVISION STAGE 14 - 237 RESIDENTIAL LOTS	PS MT
DATE	REV	DESCRIPTION	REC APP

Premise

**ORAN PARK OFFICE**  
 SUITE 301, LEVEL 3 ORAN PARK PODIUM  
 351 ORAN PARK DRIVE  
 ORAN PARK, NSW 2570  
 PH: (02) 4632 6500  
 WEB: www.premise.com.au

DESIGNED  
P. SITHIRAJVONGSA  
 CHECKED  
S. HOYNES  
 PROJECT MANAGER  
M. THORNE

SCALE  
0 100 200 300m  
 SCALE 1:5000 (A1)  
DRAFT  
 ORIGINAL SHEET SIZE A1

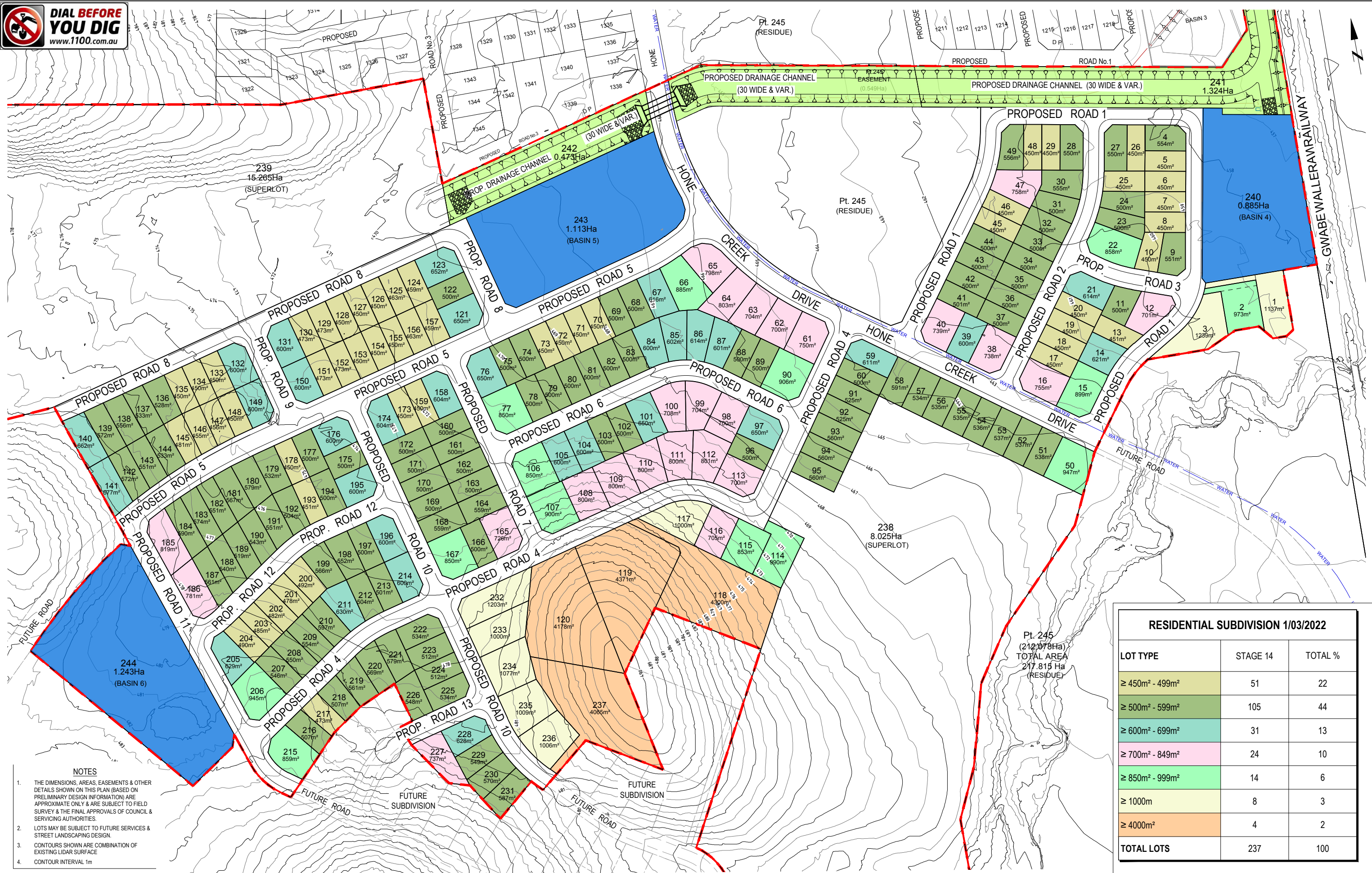
CLIENT  
**CAERLEON MUDGEES PTY LTD**

PROJECT  
**STAGE 14 - DEVELOPMENT APPLICATION**

LOCATION  
**"CAERLEON ESTATE", MUDGEES**

SHEET TITLE  
**STAGING PLAN**

JOB CODE		319171-31	
SHEET NUMBER	REV	DA05	B



- NOTES**
1. THE DIMENSIONS, AREAS, EASEMENTS & OTHER DETAILS SHOWN ON THIS PLAN (BASED ON PRELIMINARY DESIGN INFORMATION) ARE APPROXIMATE ONLY & ARE SUBJECT TO FIELD SURVEY & THE FINAL APPROVALS OF COUNCIL & SERVICING AUTHORITIES.
  2. LOTS MAY BE SUBJECT TO FUTURE SERVICES & STREET LANDSCAPING DESIGN.
  3. CONTOURS SHOWN ARE COMBINATION OF EXISTING LIDAR SURFACE
  4. CONTOUR INTERVAL 1m

RESIDENTIAL SUBDIVISION 1/03/2022		
LOT TYPE	STAGE 14	TOTAL %
≥ 450m <sup>2</sup> - 499m <sup>2</sup>	51	22
≥ 500m <sup>2</sup> - 599m <sup>2</sup>	105	44
≥ 600m <sup>2</sup> - 699m <sup>2</sup>	31	13
≥ 700m <sup>2</sup> - 849m <sup>2</sup>	24	10
≥ 850m <sup>2</sup> - 999m <sup>2</sup>	14	6
≥ 1000m <sup>2</sup>	8	3
≥ 4000m <sup>2</sup>	4	2
<b>TOTAL LOTS</b>	<b>237</b>	<b>100</b>

NOT FOR CONSTRUCTION			
DATE	REV	DESCRIPTION	REVISIONS
15/03/22	B	ISSUED FOR COUNCIL APPROVAL	PS MT
11/03/22	A	ISSUED FOR REVIEW - PROPOSED SUBDIVISION STAGE 14 - 237 RESIDENTIAL LOTS	PS MT
			REC APP

**Premise**  
 ORAN PARK OFFICE  
 SUITE 301, LEVEL 3 ORAN PARK PODIUM  
 351 ORAN PARK DRIVE  
 ORAN PARK, NSW 2570  
 PH: (02) 4632 6500  
 WEB: www.premise.com.au

DESIGNED  
P. SITHIRAJVONGSA  
 CHECKED  
S. HOYNES  
 PROJECT MANAGER  
M. THORNE

SCALE  
0 25 50 75m  
 SCALE 1:1250 (A1)  
**DRAFT**  
 ORIGINAL SHEET SIZE A1

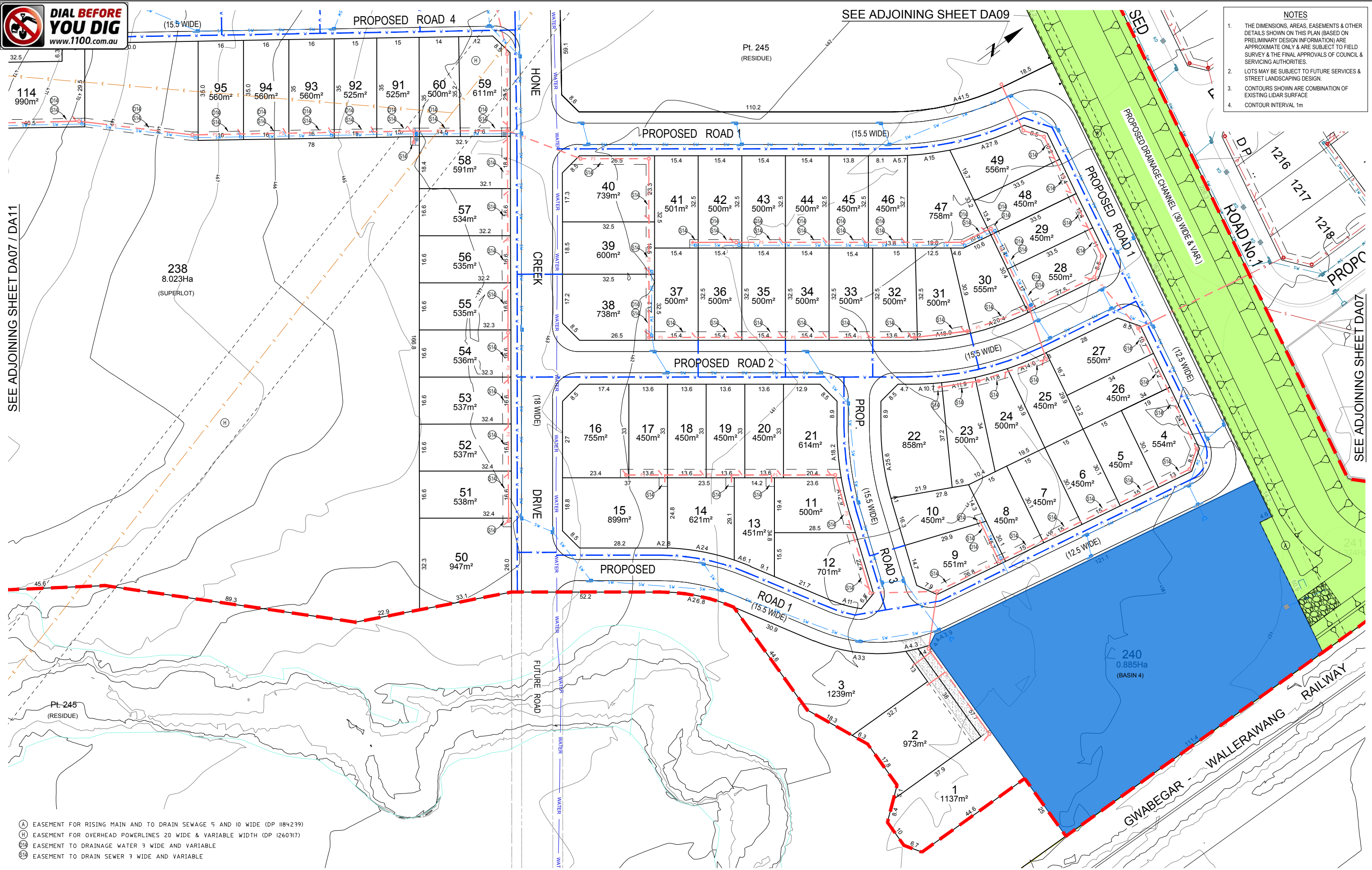
CLIENT  
**CAERLEON MUDGEY PTY LTD**  
 PROJECT  
**STAGE 14 - DEVELOPMENT APPLICATION**  
 LOCATION  
**"CAERLEON ESTATE", MUDGEY**  
 SHEET TITLE  
**PROPOSED LOT MIX**

JOB CODE  
**319171-31**  
 SHEET NUMBER  
**DA06**  
 REV  
**B**





SEE ADJOINING SHEET DA07 / DA11



- NOTES**
1. THE DIMENSIONS, AREAS, EASEMENTS & OTHER DETAILS SHOWN ON THIS PLAN (BASED ON PRELIMINARY DESIGN INFORMATION) ARE APPROXIMATE ONLY & ARE SUBJECT TO FIELD SURVEY & THE FINAL APPROVALS OF COUNCIL & SERVICING AUTHORITIES.
  2. LOTS MAY BE SUBJECT TO FUTURE SERVICES & STREET LANDSCAPING DESIGN.
  3. CONTOURS SHOWN ARE COMBINATION OF EXISTING LIDAR SURFACE
  4. CONTOUR INTERVAL 1m

- (A) EASEMENT FOR RISING MAIN AND TO DRAIN SEWAGE 5 AND 10 WIDE (DP 1184239)
- (H) EASEMENT FOR OVERHEAD POWERLINES 20 WIDE & VARIABLE WIDTH (DP 1260317)
- (D) EASEMENT TO DRAINAGE WATER 3 WIDE AND VARIABLE
- (S) EASEMENT TO DRAIN SEWER 3 WIDE AND VARIABLE

NOT FOR CONSTRUCTION			
DATE	REV	DESCRIPTION	REVISIONS
15/03/22	B	ISSUED FOR COUNCIL APPROVAL	PS MT
11/03/22	A	ISSUED FOR REVIEW - PROPOSED SUBDIVISION STAGE 14 - 237 RESIDENTIAL LOTS	PS MT
			REC APP

**Premise**  
 ORAN PARK OFFICE  
 SUITE 301, LEVEL 3 ORAN PARK PODIUM  
 351 ORAN PARK DRIVE  
 ORAN PARK, NSW 2570  
 PH: (02) 4632 6500  
 WEB: www.premise.com.au

DESIGNED  
P. SITHIRAJVONGSA  
 CHECKED  
S. HOYNES  
 PROJECT MANAGER  
M. THORNE

SCALE  
0 12 24 36m  
 SCALE 1:600 (A1)  
**DRAFT**  
 ORIGINAL SHEET SIZE A1

CLIENT	CAERLEON MUDGE PTY LTD	JOB CODE	319171-31
PROJECT	STAGE 14 - DEVELOPMENT APPLICATION	SHEET NUMBER	DA08
LOCATION	"CAERLEON ESTATE", MUDGE	REV	B
SHEET TITLE	PROPOSED LOT LAYOUT 2 OF 5		





- NOTES**
1. THE DIMENSIONS, AREAS, EASEMENTS & OTHER DETAILS SHOWN ON THIS PLAN (BASED ON PRELIMINARY DESIGN INFORMATION) ARE APPROXIMATE ONLY & ARE SUBJECT TO FIELD SURVEY & THE FINAL APPROVALS OF COUNCIL & SERVICING AUTHORITIES.
  2. LOTS MAY BE SUBJECT TO FUTURE SERVICES & STREET LANDSCAPING DESIGN.
  3. CONTOURS SHOWN ARE COMBINATION OF EXISTING LIDAR SURFACE
  4. CONTOUR INTERVAL 1m



**NOT FOR CONSTRUCTION**

DATE	REV	DESCRIPTION	REVISIONS	PS	MT
15/03/22	B	ISSUED FOR COUNCIL APPROVAL		PS	MT
11/03/22	A	ISSUED FOR REVIEW - PROPOSED SUBDIVISION STAGE 14 - 237 RESIDENTIAL LOTS		PS	MT
				REC	APP

**Premise**

ORAN PARK OFFICE  
 SUITE 301, LEVEL 3 ORAN PARK PODIUM  
 351 ORAN PARK DRIVE  
 ORAN PARK, NSW 2570  
 PH: (02) 4632 6500  
 WEB: www.premise.com.au

DESIGNED  
P. SITHIRAJVONGSA  
 CHECKED  
S. HOYNES  
 PROJECT MANAGER  
M. THORNE

SCALE  
0 12 24 36m  
 SCALE 1:600 (A1)  
**DRAFT**  
 ORIGINAL SHEET SIZE A1

CLIENT  
**CAERLEON MUDGEY PTY LTD**

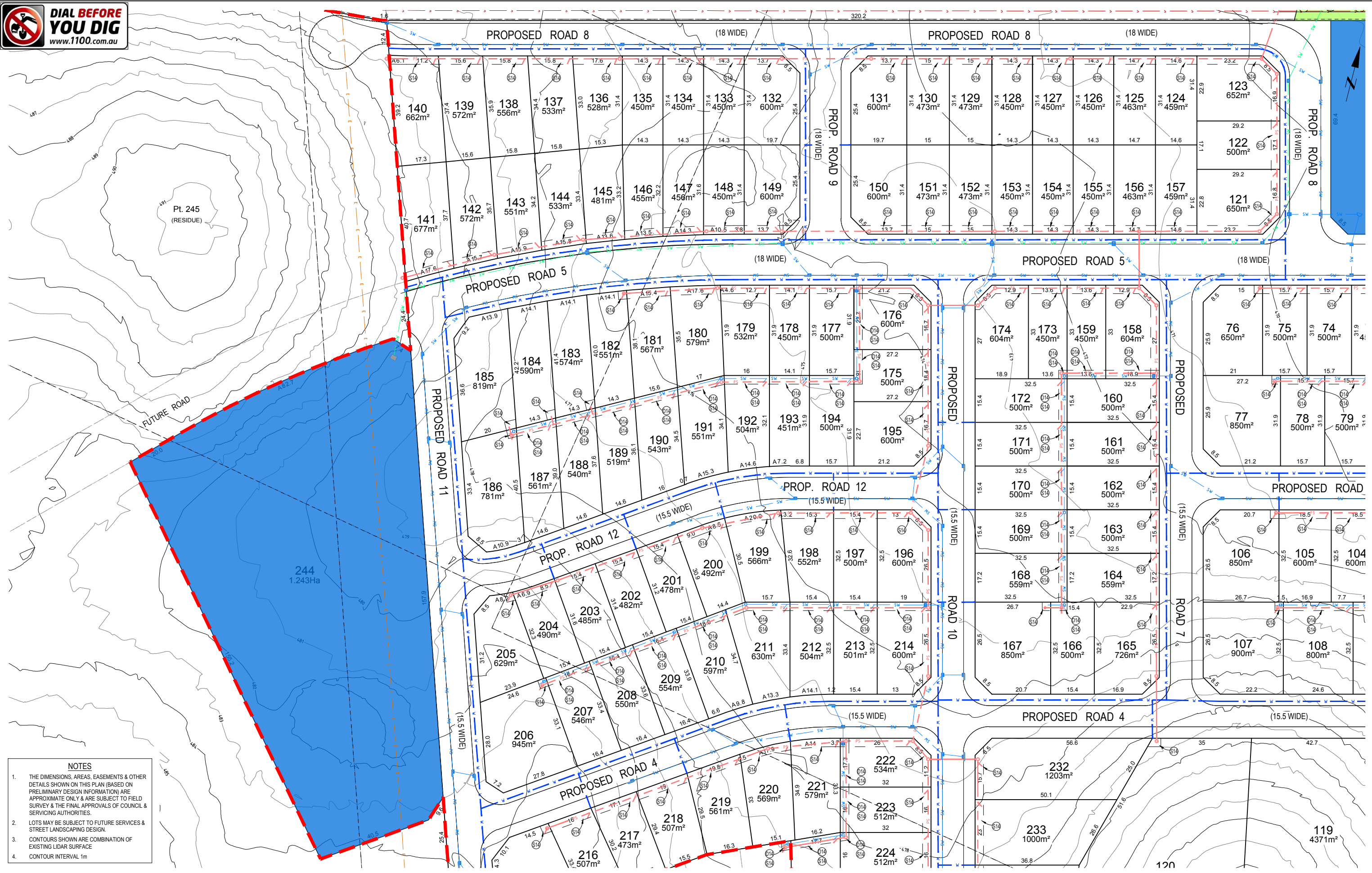
PROJECT  
**STAGE 14 - DEVELOPMENT APPLICATION**

LOCATION  
**"CAERLEON ESTATE", MUDGEY**

SHEET TITLE  
**PROPOSED LOT LAYOUT 3 OF 5**

JOB CODE  
**319171-31**

SHEET NUMBER	REV
DA09	B



**NOTES**

1. THE DIMENSIONS, AREAS, EASEMENTS & OTHER DETAILS SHOWN ON THIS PLAN (BASED ON PRELIMINARY DESIGN INFORMATION) ARE APPROXIMATE ONLY & ARE SUBJECT TO FIELD SURVEY & THE FINAL APPROVALS OF COUNCIL & SERVICING AUTHORITIES.
2. LOTS MAY BE SUBJECT TO FUTURE SERVICES & STREET LANDSCAPING DESIGN.
3. CONTOURS SHOWN ARE COMBINATION OF EXISTING LIDAR SURFACE
4. CONTOUR INTERVAL 1m

<b>NOT FOR CONSTRUCTION</b>			
15/03/22	B	ISSUED FOR COUNCIL APPROVAL	PS MT
11/03/22	A	ISSUED FOR REVIEW - PROPOSED SUBDIVISION STAGE 14 - 237 RESIDENTIAL LOTS	PS MT
DATE	REV	DESCRIPTION	REC APP

**Premise**

**ORAN PARK OFFICE**  
 SUITE 301, LEVEL 3 ORAN PARK PODIUM  
 351 ORAN PARK DRIVE  
 ORAN PARK, NSW 2570  
 PH: (02) 4632 6500  
 WEB: www.premise.com.au

DESIGNED  
P. SITHIRAJVONGSA

CHECKED  
S. HOYNES

PROJECT MANAGER  
M. THORNE

SCALE  
0 12 24 36m

SCALE 1:600 (A1)

**DRAFT**

ORIGINAL SHEET SIZE A1

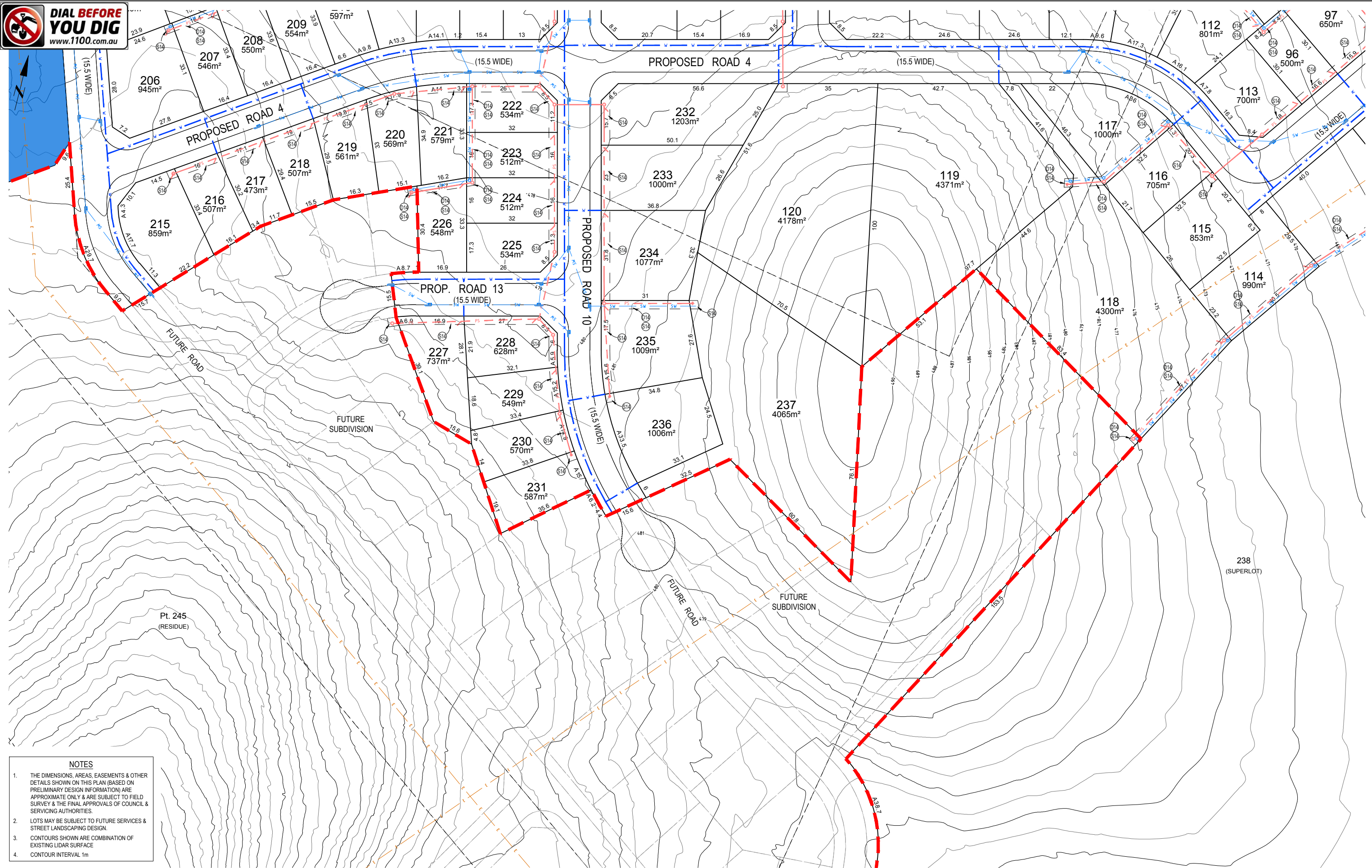
CLIENT  
**CAERLEON MUDGE PTY LTD**

PROJECT  
**STAGE 14 - DEVELOPMENT APPLICATION**

LOCATION  
**"CAERLEON ESTATE", MUDGE**

SHEET TITLE  
**PROPOSED LOT LAYOUT 4 OF 5**

JOB CODE <b>319171-31</b>	
SHEET NUMBER <b>DA10</b>	REV <b>B</b>



- NOTES**
1. THE DIMENSIONS, AREAS, EASEMENTS & OTHER DETAILS SHOWN ON THIS PLAN (BASED ON PRELIMINARY DESIGN INFORMATION) ARE APPROXIMATE ONLY & ARE SUBJECT TO FIELD SURVEY & THE FINAL APPROVALS OF COUNCIL & SERVICING AUTHORITIES.
  2. LOTS MAY BE SUBJECT TO FUTURE SERVICES & STREET LANDSCAPING DESIGN.
  3. CONTOURS SHOWN ARE COMBINATION OF EXISTING LIDAR SURFACE
  4. CONTOUR INTERVAL 1m

<b>NOT FOR CONSTRUCTION</b>			
15/03/22	B	ISSUED FOR COUNCIL APPROVAL	PS MT
11/03/22	A	ISSUED FOR REVIEW - PROPOSED SUBDIVISION STAGE 14 - 237 RESIDENTIAL LOTS	PS MT
DATE	REV	DESCRIPTION	REC APP

**Premise**  
 ORAN PARK OFFICE  
 SUITE 301, LEVEL 3 ORAN PARK PODIUM  
 351 ORAN PARK DRIVE  
 ORAN PARK, NSW 2570  
 PH: (02) 4632 6500  
 WEB: www.premise.com.au

DESIGNED  
P. SITHIRAJVONGSA  
 CHECKED  
S. HOYNES  
 PROJECT MANAGER  
M. THORNE

SCALE  
0 12 24 36m  
 SCALE 1:600 (A1)  
**DRAFT**  
 ORIGINAL SHEET SIZE A1

CLIENT  
**CAERLEON MUDGEES PTY LTD**

PROJECT  
**STAGE 14 - DEVELOPMENT APPLICATION**

LOCATION  
**"CAERLEON ESTATE", MUDGEES**

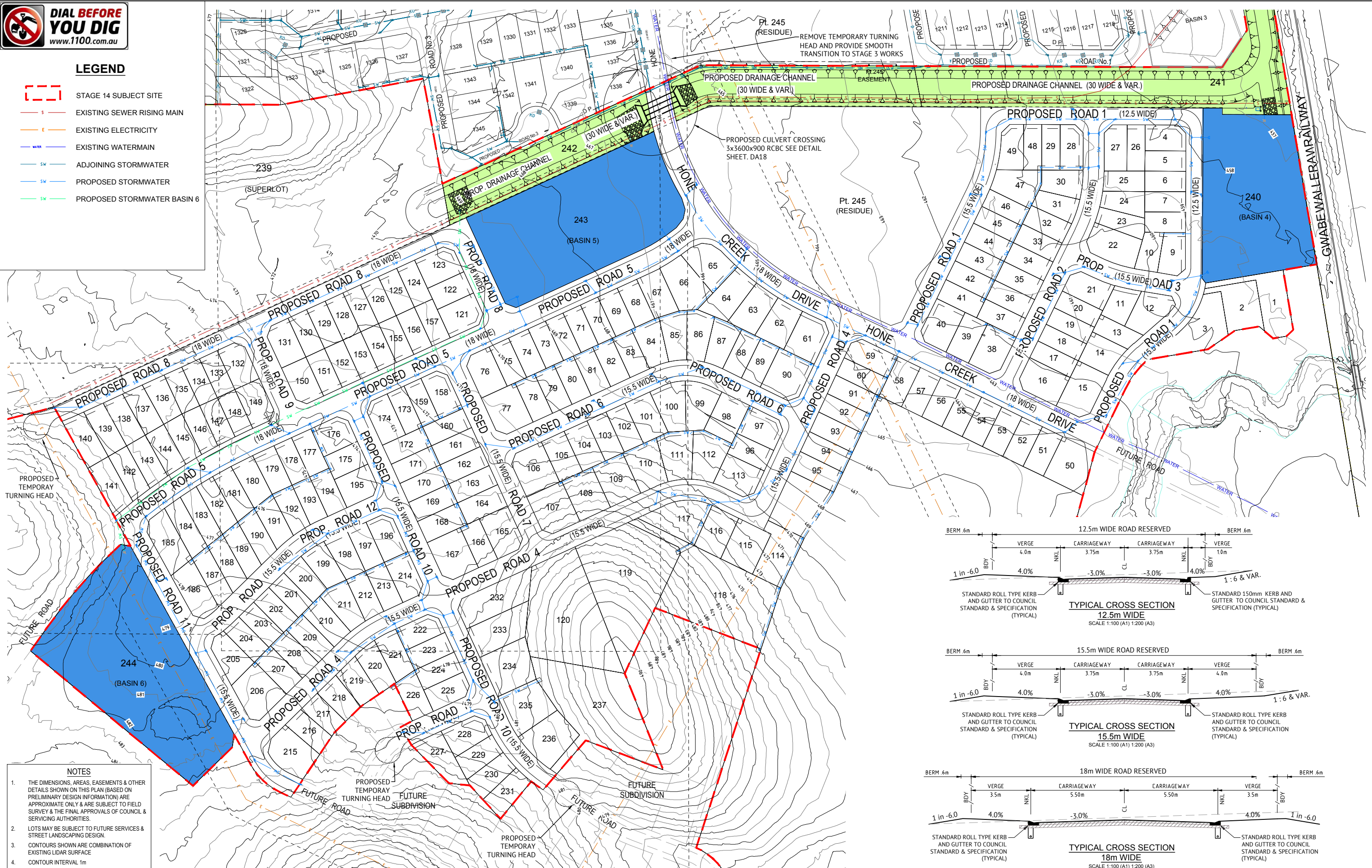
SHEET TITLE  
**PROPOSED LOT LAYOUT 5 OF 5**

JOB CODE <b>319171-31</b>	
SHEET NUMBER <b>DA11</b>	REV <b>B</b>



**LEGEND**

- STAGE 14 SUBJECT SITE
- EXISTING SEWER RISING MAIN
- EXISTING ELECTRICITY
- EXISTING WATERMAIN
- ADJOINING STORMWATER
- PROPOSED STORMWATER
- PROPOSED STORMWATER BASIN 6



PROPOSED TEMPORARY TURNING HEAD

FUTURE ROAD

PROPOSED TEMPORARY TURNING HEAD

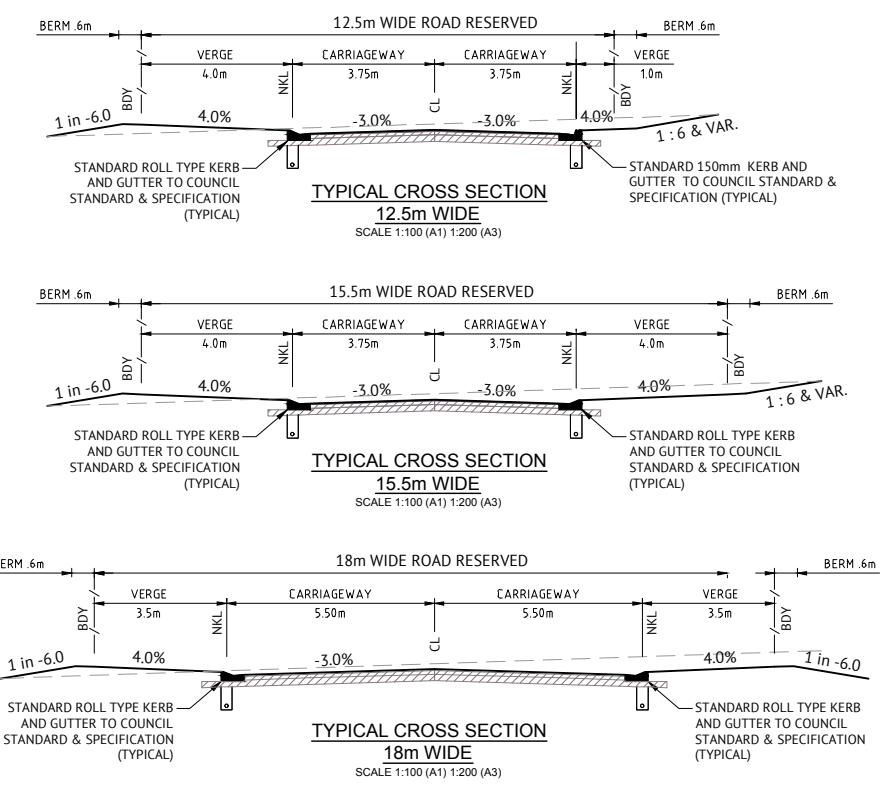
FUTURE ROAD

PROPOSED TEMPORARY TURNING HEAD

FUTURE ROAD

PROPOSED TEMPORARY TURNING HEAD

FUTURE ROAD



- NOTES**
1. THE DIMENSIONS, AREAS, EASEMENTS & OTHER DETAILS SHOWN ON THIS PLAN (BASED ON PRELIMINARY DESIGN INFORMATION) ARE APPROXIMATE ONLY & ARE SUBJECT TO FIELD SURVEY & THE FINAL APPROVALS OF COUNCIL & SERVING AUTHORITIES.
  2. LOTS MAY BE SUBJECT TO FUTURE SERVICES & STREET LANDSCAPING DESIGN.
  3. CONTOURS SHOWN ARE COMBINATION OF EXISTING LIDAR SURFACE
  4. CONTOUR INTERVAL 1m

<b>NOT FOR CONSTRUCTION</b>			
15/03/22	B	ISSUED FOR COUNCIL APPROVAL	PS MT
11/03/22	A	ISSUED FOR REVIEW - PROPOSED SUBDIVISION STAGE 14 - 237 RESIDENTIAL LOTS	PS MT
DATE	REV	DESCRIPTION	REC APP

**ORAN PARK OFFICE**  
 SUITE 301, LEVEL 3 ORAN PARK PODIUM  
 351 ORAN PARK DRIVE  
 ORAN PARK, NSW 2570  
 PH: (02) 4632 6500  
 WEB: www.premise.com.au

DESIGNED  
P. SITHIRAJVONGSA  
 CHECKED  
S. HOYNES  
 PROJECT MANAGER  
M. THORNE

SCALE  
0 25 50 75m  
 SCALE 1:1250 (A1)  
**DRAFT**  
 ORIGINAL SHEET SIZE A1

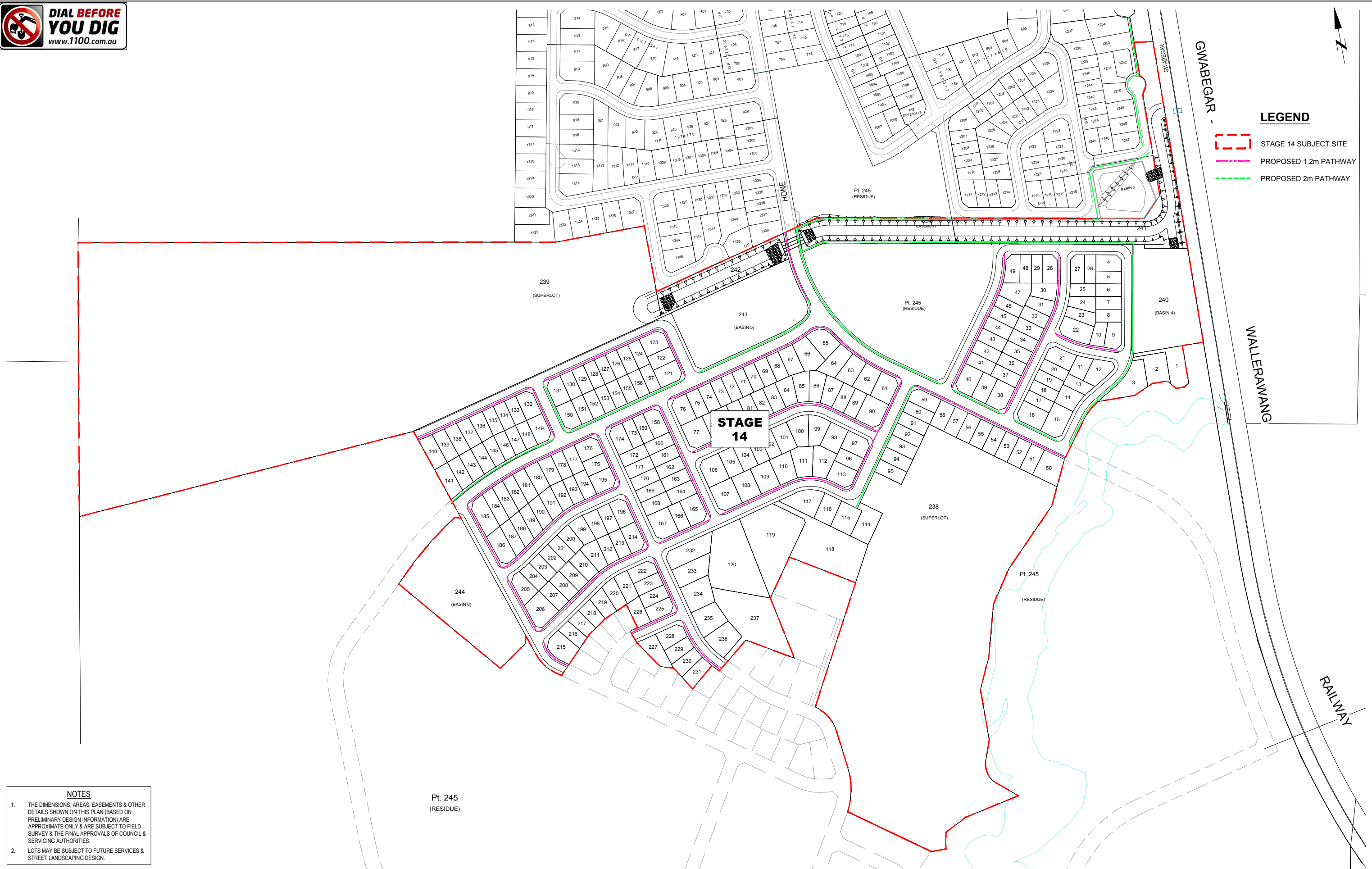
CLIENT  
**CAERLEON MUDGE PTY LTD**

PROJECT  
**STAGE 14 - DEVELOPMENT APPLICATION**

LOCATION  
**"CAERLEON ESTATE", MUDGE**

SHEET TITLE  
**PROPOSED ROAD LAYOUT CONCEPT**

JOB CODE <b>319171-31</b>	
SHEET NUMBER <b>DA12</b>	REV <b>B</b>



**LEGEND**

- STAGE 14 SUBJECT SITE
- PROPOSED 1.2m PATHWAY
- PROPOSED 2m PATHWAY

**STAGE 14**

- NOTES**
1. THE DIMENSIONS, AREAS, EASEMENTS & OTHER DETAILS SHOWN ON THIS PLAN (BASED ON PRELIMINARY DESIGN INFORMATION) ARE APPROXIMATE ONLY & ARE SUBJECT TO FIELD SURVEY & THE FINAL APPROVALS OF COUNCIL & SERVICING AUTHORITIES.
  2. LOTS MAY BE SUBJECT TO FUTURE SERVICES & STREET LANDSCAPING DESIGN.

<b>NOT FOR CONSTRUCTION</b>			
15/03/22	B	ISSUED FOR COUNCIL APPROVAL	PS MT
11/03/22	A	ISSUED FOR REVIEW - PROPOSED SUBDIVISION STAGE 14 - 237 RESIDENTIAL LOTS	PS MT
DATE	REV	DESCRIPTION	REC APP

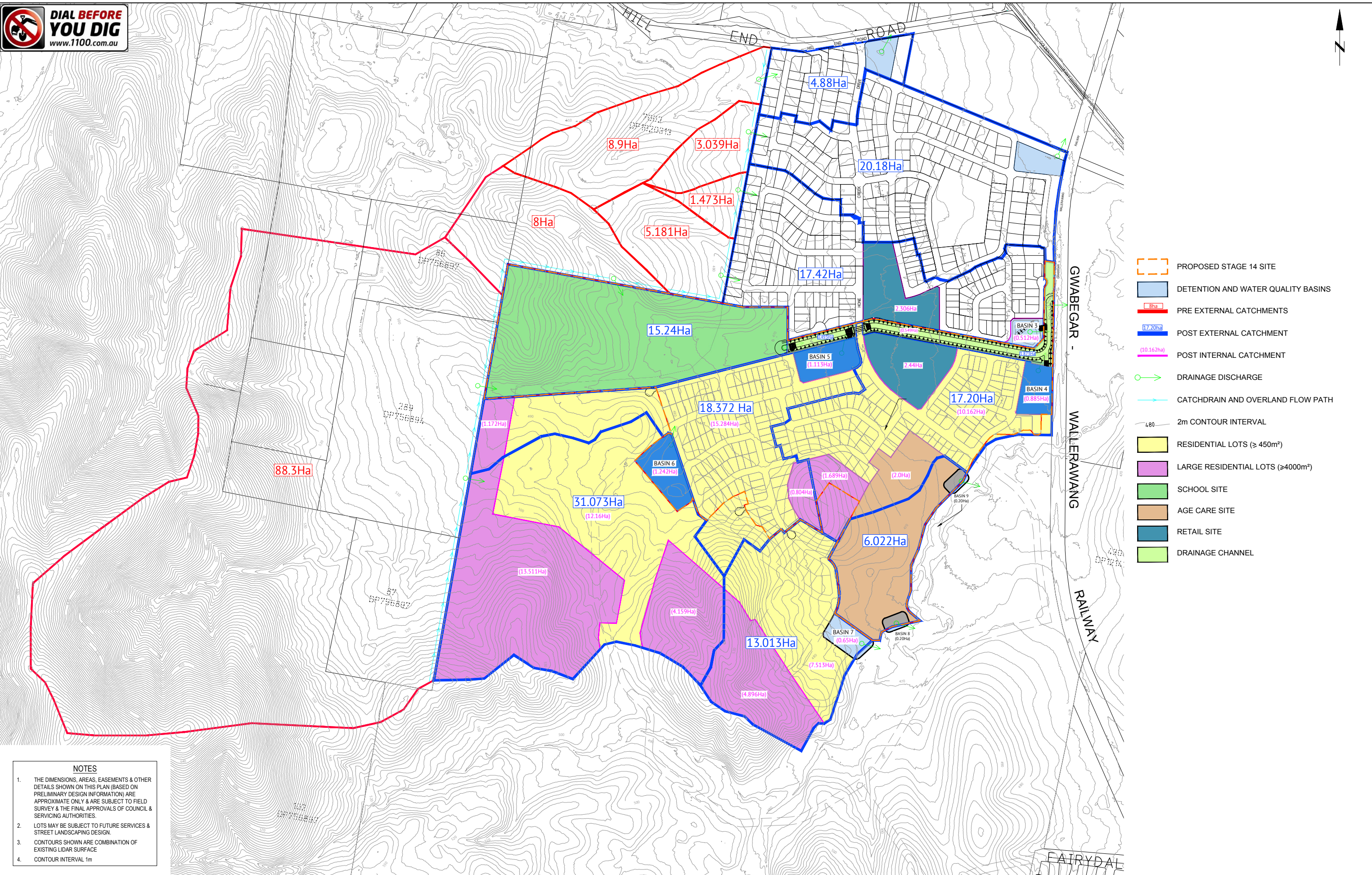
**Premise**  
 ORAN PARK OFFICE  
 SUITE 301, LEVEL 3 ORAN PARK PODIUM  
 351 ORAN PARK DRIVE  
 ORAN PARK, NSW 2570  
 PH: (02) 4632 6500  
 WEB: www.premise.com.au

DESIGNED  
P. SITHIRAJVONGSA  
 CHECKED  
S. HOYNES  
 PROJECT MANAGER  
M. THORNE

SCALE  
0 40 80 120m  
 SCALE 1:2000 (A1)  
**DRAFT**  
 ORIGINAL SHEET SIZE A1

CLIENT  
**CAERLEON MUDGEY PTY LTD**  
 PROJECT  
**STAGE 14 - DEVELOPMENT APPLICATION**  
 LOCATION  
**"CAERLEON ESTATE", MUDGEY**  
 SHEET TITLE  
**PROPOSED PATHWAY NETWORK**

JOB CODE <b>319171-31</b>	
SHEET NUMBER <b>DA13</b>	REV <b>B</b>



- PROPOSED STAGE 14 SITE
- DETENTION AND WATER QUALITY BASINS
- PRE EXTERNAL CATCHMENTS
- POST EXTERNAL CATCHMENT
- POST INTERNAL CATCHMENT
- DRAINAGE DISCHARGE
- CATCHDRAIN AND OVERLAND FLOW PATH
- 2m CONTOUR INTERVAL
- RESIDENTIAL LOTS ( $\geq 450m^2$ )
- LARGE RESIDENTIAL LOTS ( $\geq 4000m^2$ )
- SCHOOL SITE
- AGE CARE SITE
- RETAIL SITE
- DRAINAGE CHANNEL

**NOTES**

1. THE DIMENSIONS, AREAS, EASEMENTS & OTHER DETAILS SHOWN ON THIS PLAN (BASED ON PRELIMINARY DESIGN INFORMATION) ARE APPROXIMATE ONLY & ARE SUBJECT TO FIELD SURVEY & THE FINAL APPROVALS OF COUNCIL & SERVICING AUTHORITIES.
2. LOTS MAY BE SUBJECT TO FUTURE SERVICES & STREET LANDSCAPING DESIGN.
3. CONTOURS SHOWN ARE COMBINATION OF EXISTING LIDAR SURFACE
4. CONTOUR INTERVAL 1m

<b>NOT FOR CONSTRUCTION</b>			
15/03/22	B	ISSUED FOR COUNCIL APPROVAL	PS MT
11/03/22	A	ISSUED FOR REVIEW - PROPOSED SUBDIVISION STAGE 14 - 237 RESIDENTIAL LOTS	PS MT
DATE	REV	DESCRIPTION	REC APP

**ORAN PARK OFFICE**  
 SUITE 301, LEVEL 3 ORAN PARK PODIUM  
 351 ORAN PARK DRIVE  
 ORAN PARK, NSW 2570  
 PH: (02) 4632 6500  
 WEB: www.premise.com.au

DESIGNED  
P. SITHIRAJVONGSA  
 CHECKED  
S. HOYNES  
 PROJECT MANAGER  
M. THORNE

SCALE  
0 50 100 150m  
 SCALE 1:2500 (A1)  
**DRAFT**  
 ORIGINAL SHEET SIZE A1

CLIENT  
**CAERLEON MUDGEY PTY LTD**

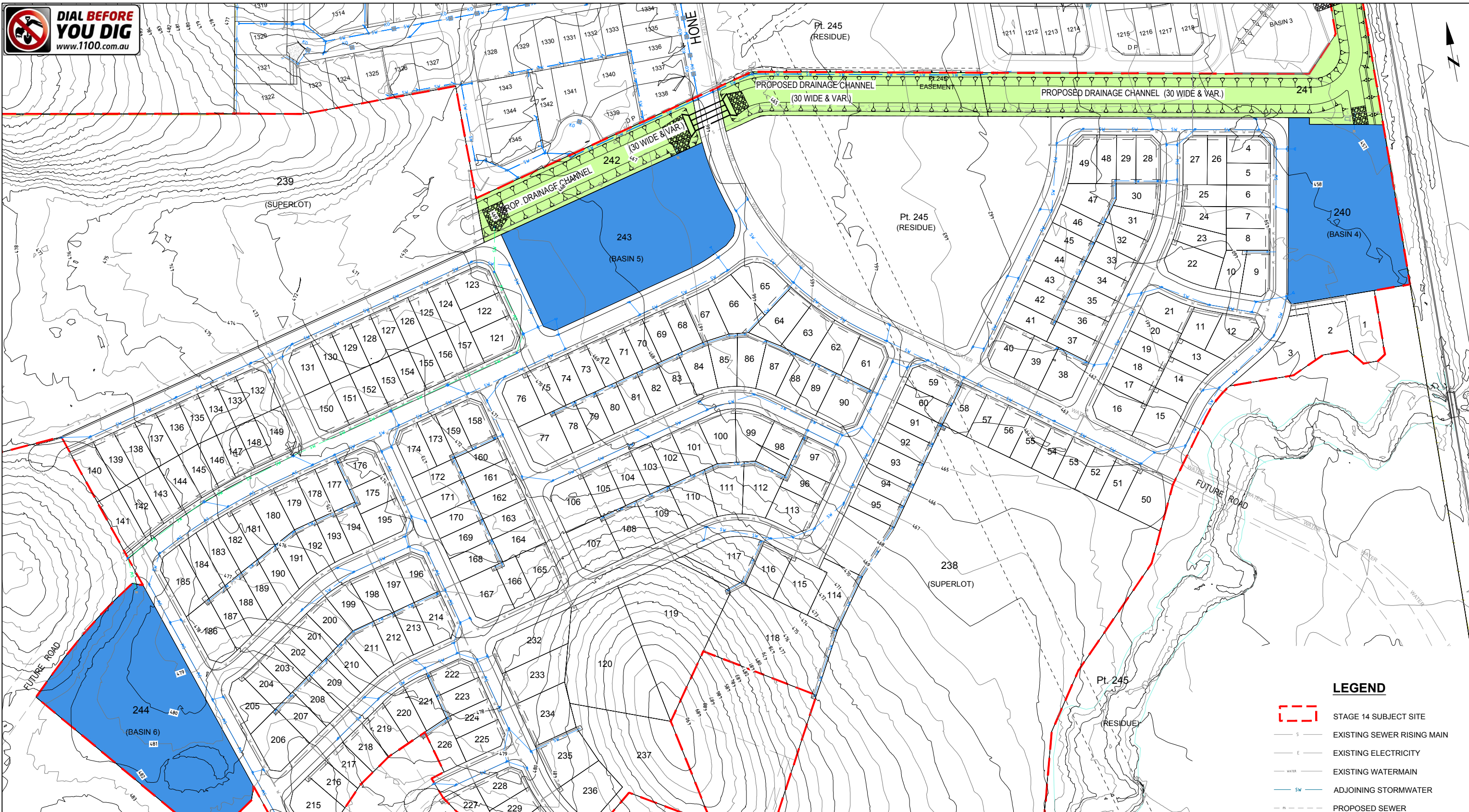
PROJECT  
**STAGE 14 - DEVELOPMENT APPLICATION**

LOCATION  
**"CAERLEON ESTATE", MUDGEY**


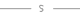
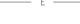



SHEET TITLE  
**PROPOSED STORMWATER CATCHMENT PLAN**

JOB CODE <b>319171-31</b>	
SHEET NUMBER <b>DA14</b>	REV <b>B</b>

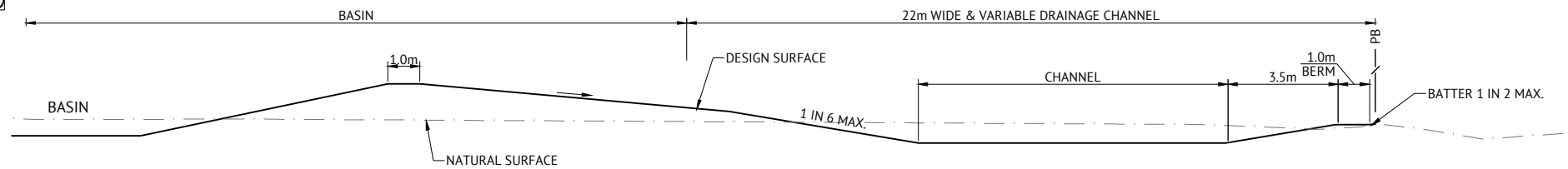




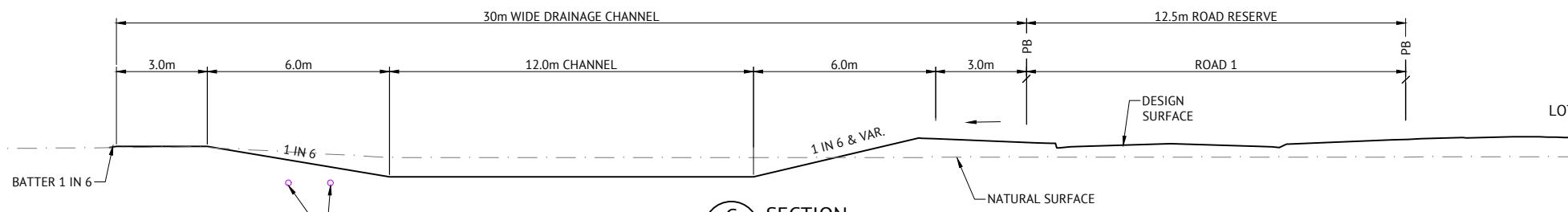
**LEGEND**

-  STAGE 14 SUBJECT SITE
-  EXISTING SEWER RISING MAIN
-  EXISTING ELECTRICITY
-  EXISTING WATERMAIN
-  ADJOINING STORMWATER
-  PROPOSED SEWER

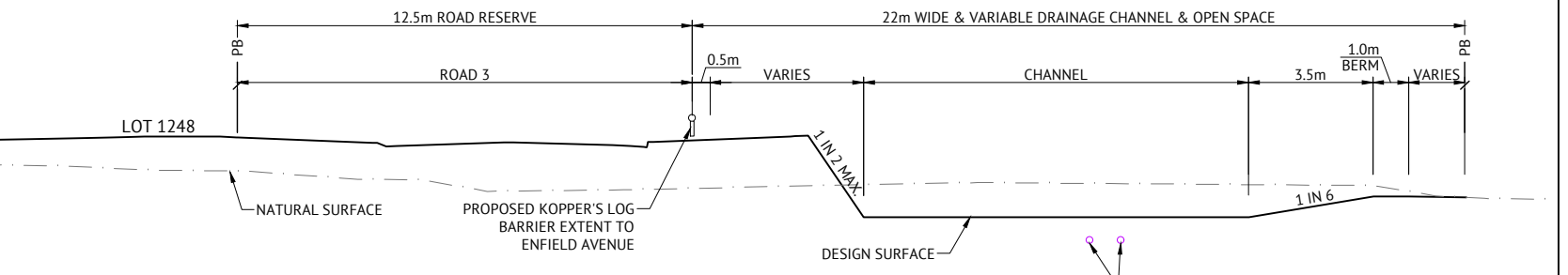
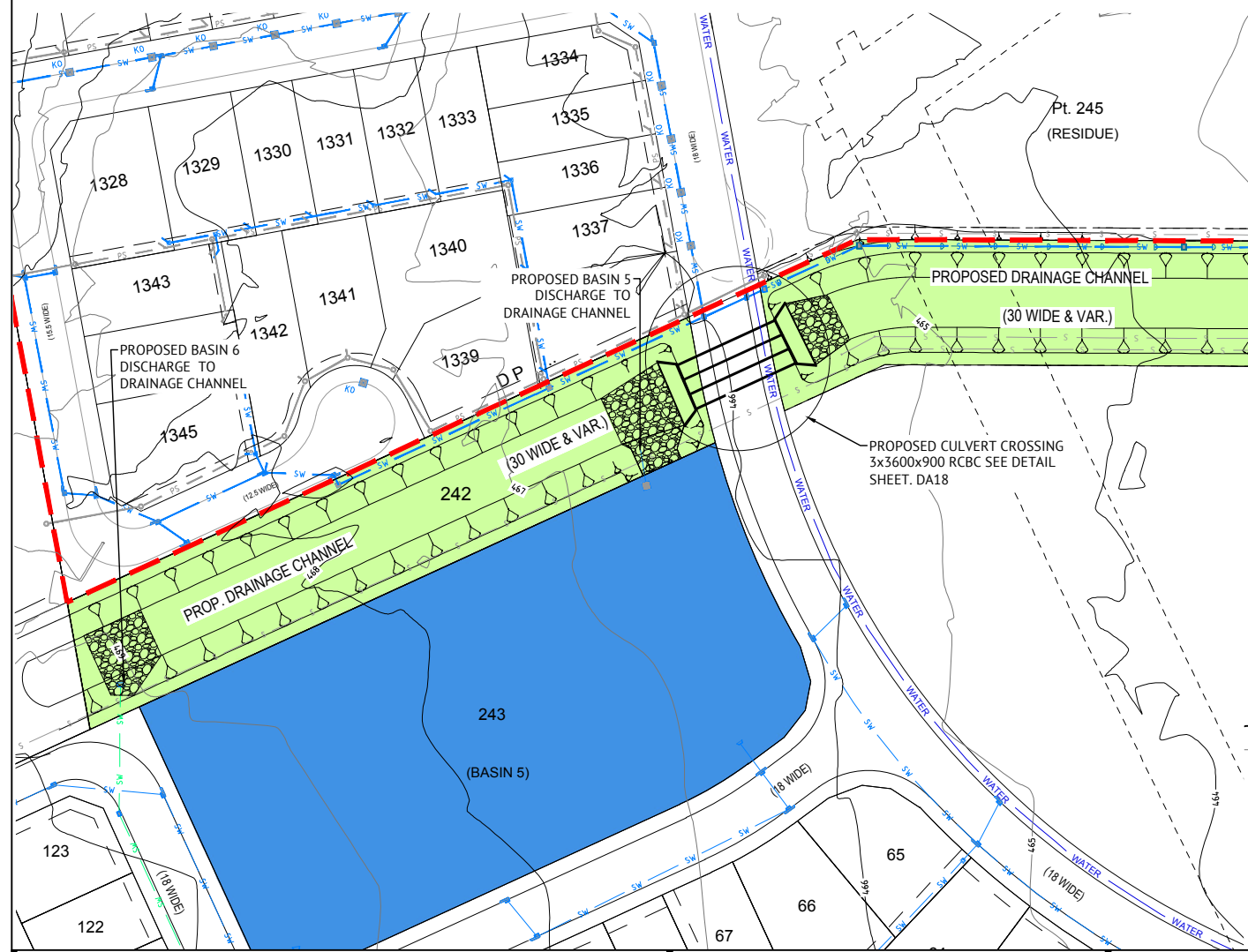
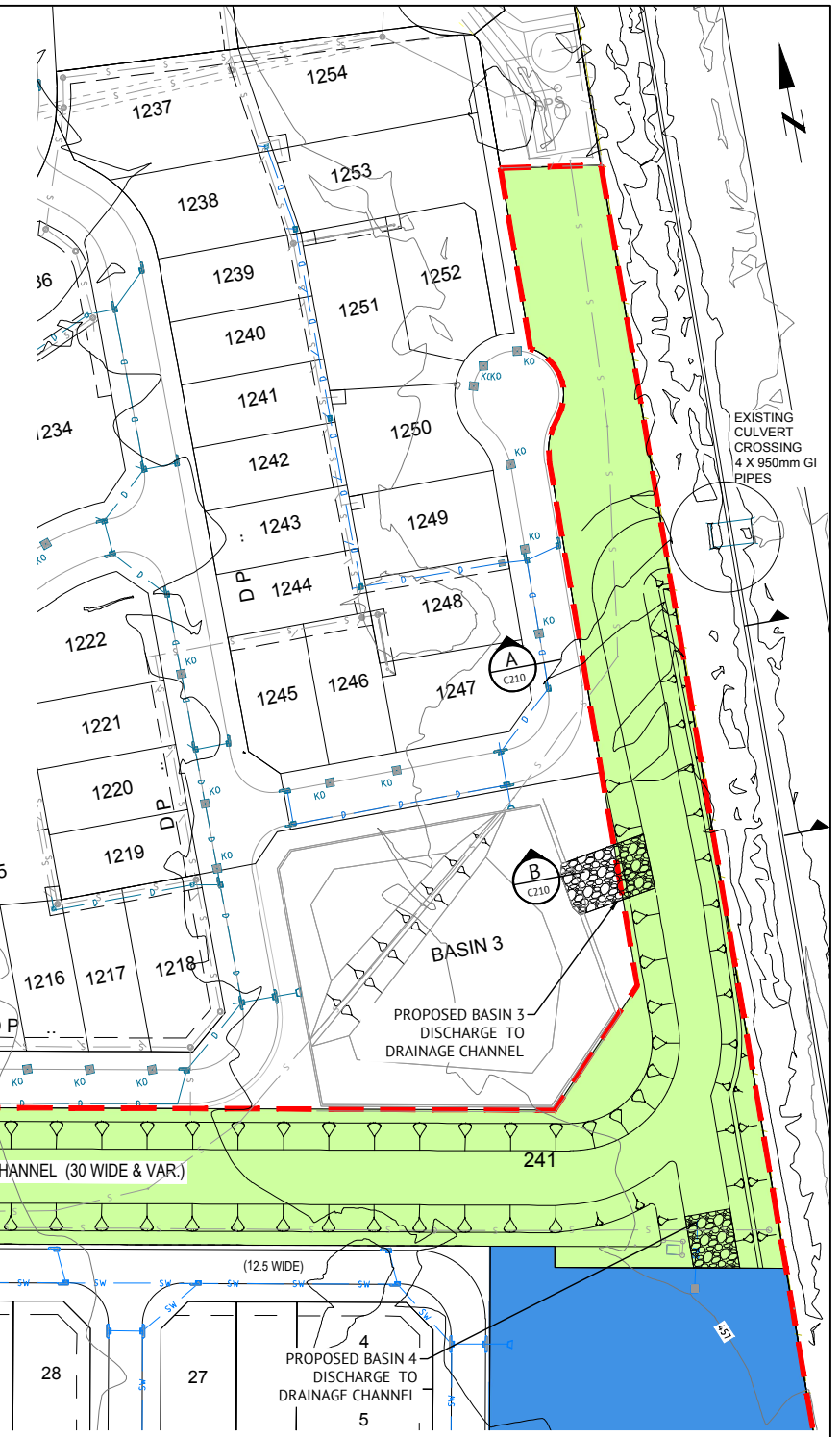




**B SECTION**  
SCALE 1:100



**C SECTION**  
SCALE 1:100



**A SECTION**  
SCALE 1:100

**NOT FOR CONSTRUCTION**

DATE	REV	DESCRIPTION	REC	APP
15/03/22	B	ISSUED FOR COUNCIL APPROVAL	PS	MT
11/03/22	A	ISSUED FOR REVIEW - PROPOSED SUBDIVISION STAGE 14 - 237 RESIDENTIAL LOTS	PS	MT

**ORAN PARK OFFICE**  
SUITE 301, LEVEL 3 ORAN PARK PODIUM  
351 ORAN PARK DRIVE  
ORAN PARK, NSW 2570  
PH: (02) 4632 6500  
WEB: www.premise.com.au

DESIGNED  
**P. SITHIRAJVONGSA**  
CHECKED  
**S. HOYNES**  
PROJECT MANAGER  
**M. THORNE**

SCALE  
0 25 50 75m  
SCALE 1:1250 (A1)  
**DRAFT**  
ORIGINAL SHEET SIZE A1

CLIENT  
**CAERLEON MUDGEY PTY LTD**

PROJECT  
**STAGE 14 - DEVELOPMENT APPLICATION**

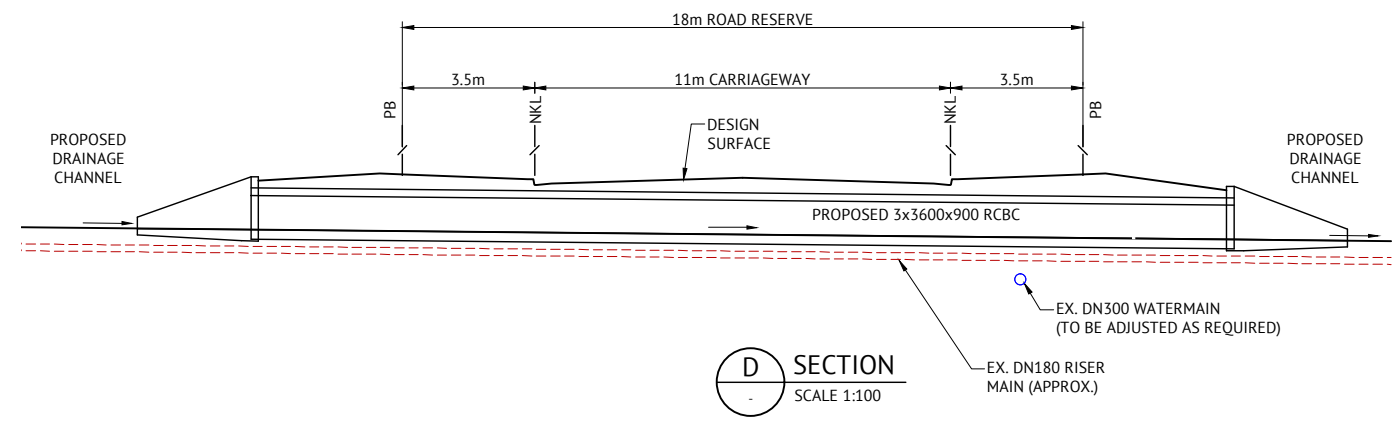
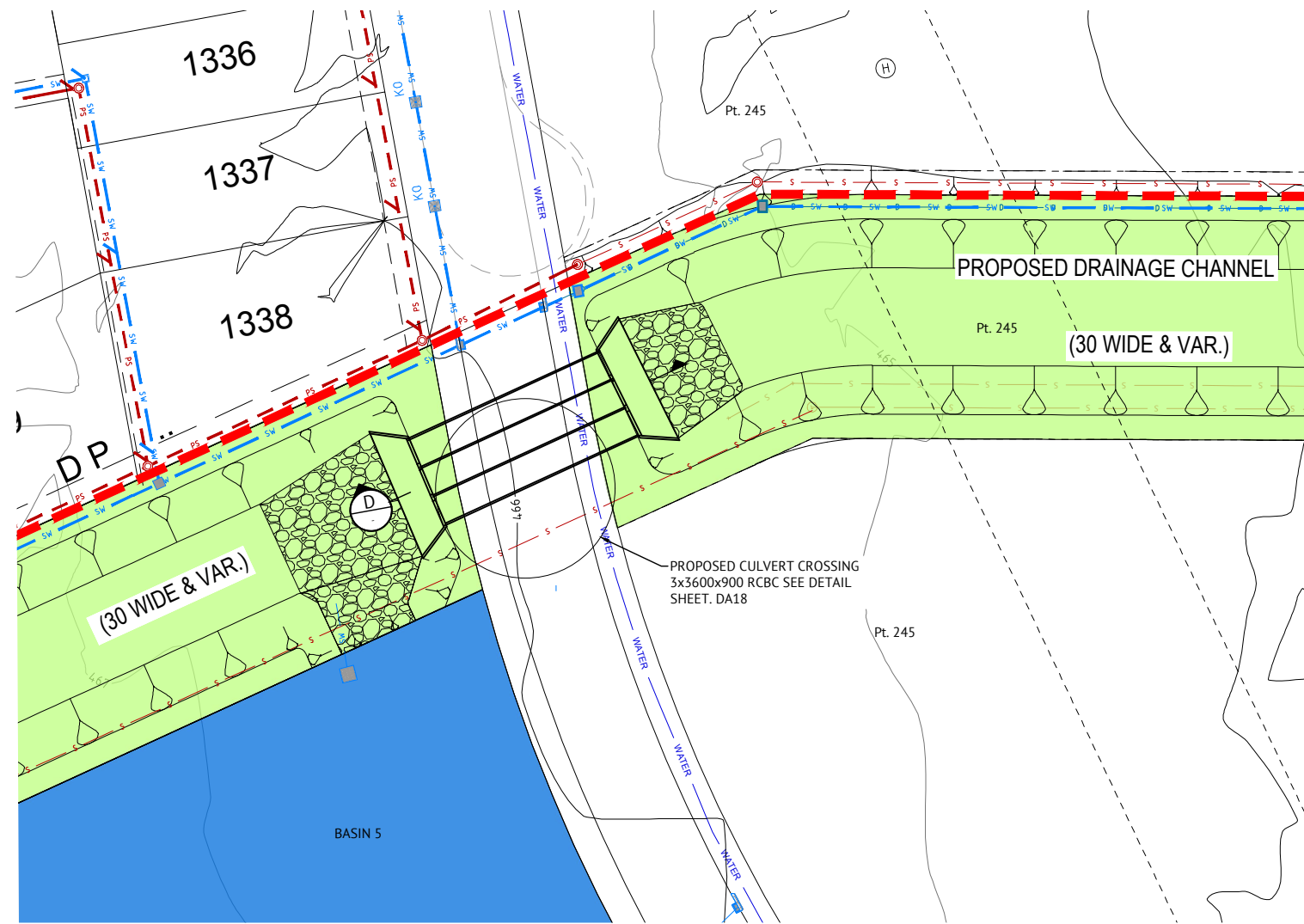
LOCATION  
**"CAERLEON ESTATE", MUDGEY**

SHEET TITLE  
**PROPOSED DRAINAGE CHANNEL & TYPICAL SECTIONS**

JOB CODE  
**319171-31**

SHEET NUMBER  
**DA17**

REV  
**B**



**NOT FOR CONSTRUCTION**

DATE	REV	DESCRIPTION	REC	APP
15/03/22	B	ISSUED FOR COUNCIL APPROVAL	PS	MT
11/03/22	A	ISSUED FOR REVIEW - PROPOSED SUBDIVISION STAGE 14 - 237 RESIDENTIAL LOTS	PS	MT



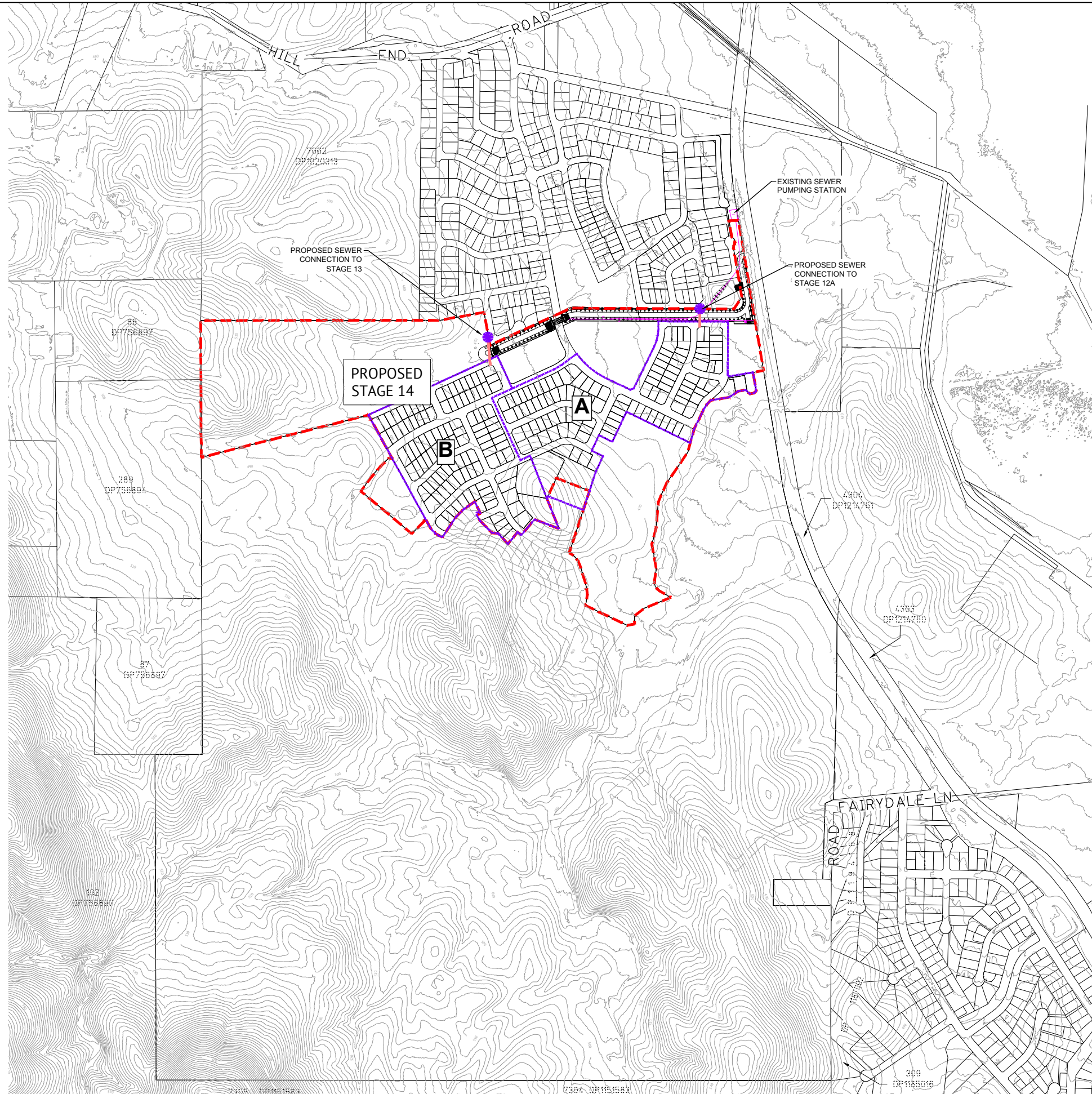
**ORAN PARK OFFICE**  
SUITE 301, LEVEL 3 ORAN PARK PODIUM  
351 ORAN PARK DRIVE  
ORAN PARK, NSW 2570  
PH: (02) 4632 6500  
WEB: www.premise.com.au

DESIGNED  
**P. SITHIRAJVONGSA**  
CHECKED  
**S. HOYNES**  
PROJECT MANAGER  
**M. THORNE**

SCALE  
0 8 16 24m  
SCALE 1:400 (A1)  
**DRAFT**  
ORIGINAL SHEET SIZE A1

CLIENT  
**CAERLEON MUDGE PTY LTD**  
PROJECT  
**STAGE 14 - DEVELOPMENT APPLICATION**  
LOCATION  
**"CAERLEON ESTATE", MUDGE**  
SHEET TITLE  
**PROPOSED CULVERT CROSSING AND TYPICAL SECTION**

JOB CODE  
**319171-31**  
SHEET NUMBER  
**DA18**  
REV  
**B**



- LEGEND**
- PROPOSED STAGE 14
  - A STAGE 14 CATCHMENT A (119 LOTS)
  - B STAGE 14 CATCHMENT B (118 LOTS)
  - SEWER RISING MAIN

- NOTES**
1. THE DIMENSIONS, AREAS, EASEMENTS & OTHER DETAILS SHOWN ON THIS PLAN (BASED ON PRELIMINARY DESIGN INFORMATION) ARE APPROXIMATE ONLY & ARE SUBJECT TO FIELD SURVEY & THE FINAL APPROVALS OF COUNCIL & SERVICING AUTHORITIES.
  2. LOTS MAY BE SUBJECT TO FUTURE SERVICES & STREET LANDSCAPING DESIGN.
  3. CONTOURS SHOWN ARE COMBINATION OF EXISTING LIDAR SURFACE
  4. CONTOUR INTERVAL 2m

<b>NOT FOR CONSTRUCTION</b>					
15/03/22	B	ISSUED FOR COUNCIL APPROVAL	PS	MT	
11/03/22	A	ISSUED FOR REVIEW - PROPOSED SUBDIVISION STAGE 14 - 237 RESIDENTIAL LOTS	PS	MT	
DATE	REV	DESCRIPTION	REC	APP	

**ORAN PARK OFFICE**  
 SUITE 301, LEVEL 3 ORAN PARK PODIUM  
 351 ORAN PARK DRIVE  
 ORAN PARK, NSW 2570  
 PH: (02) 4632 6500  
 WEB: [www.premise.com.au](http://www.premise.com.au)

DESIGNED  
P. SITHIRAJVONGSA  
 CHECKED  
S. HOYNES  
 PROJECT MANAGER  
M. THORNE

SCALE  
0 100 200 300m  
 SCALE 1:5000 (A1)  
**DRAFT**  
 ORIGINAL SHEET SIZE A1

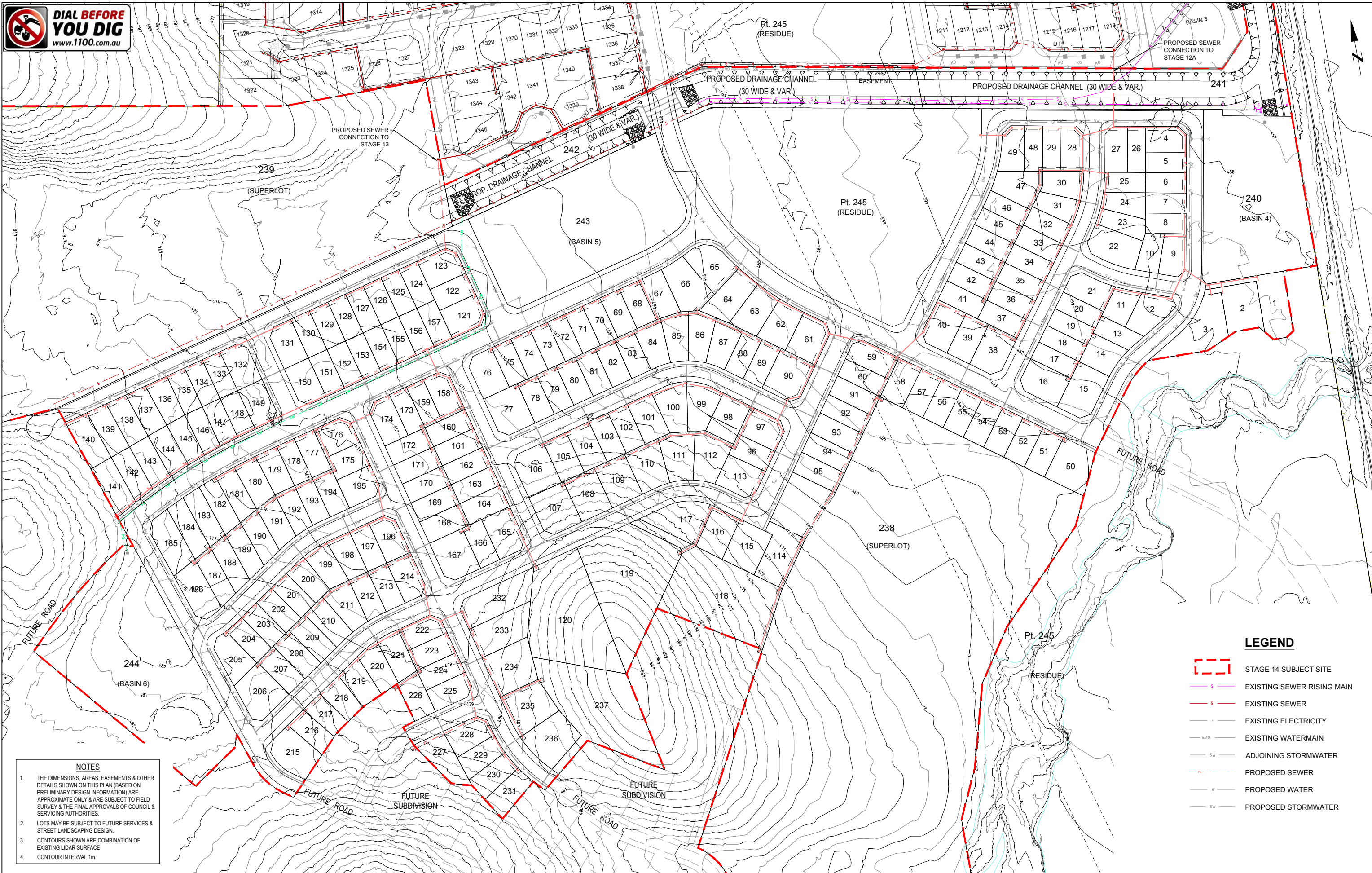
CLIENT  
**CAERLEON MUDGEES PTY LTD**

PROJECT  
**STAGE 14 - DEVELOPMENT APPLICATION**

LOCATION  
**"CAERLEON ESTATE", MUDGEES**

SHEET TITLE  
**PROPOSED SEWER CATCHMENT NETWORK PLAN**

JOB CODE <b>319171-31</b>	
SHEET NUMBER <b>DA19</b>	REV <b>B</b>



- NOTES**
1. THE DIMENSIONS, AREAS, EASEMENTS & OTHER DETAILS SHOWN ON THIS PLAN (BASED ON PRELIMINARY DESIGN INFORMATION) ARE APPROXIMATE ONLY & ARE SUBJECT TO FIELD SURVEY & THE FINAL APPROVALS OF COUNCIL & SERVICING AUTHORITIES.
  2. LOTS MAY BE SUBJECT TO FUTURE SERVICES & STREET LANDSCAPING DESIGN.
  3. CONTOURS SHOWN ARE COMBINATION OF EXISTING LIDAR SURFACE
  4. CONTOUR INTERVAL 1m

- LEGEND**
- STAGE 14 SUBJECT SITE
  - EXISTING SEWER RISING MAIN
  - EXISTING SEWER
  - EXISTING ELECTRICITY
  - EXISTING WATERMAIN
  - ADJOINING STORMWATER
  - PROPOSED SEWER
  - PROPOSED WATER
  - PROPOSED STORMWATER

**NOT FOR CONSTRUCTION**

DATE	REV	DESCRIPTION	REVISED BY	APP
15/03/22	B	ISSUED FOR COUNCIL APPROVAL	PS	MT
11/03/22	A	ISSUED FOR REVIEW - PROPOSED SUBDIVISION STAGE 14 - 237 RESIDENTIAL LOTS	PS	MT
			REC	APP

**Premise**  
 ORAN PARK OFFICE  
 SUITE 301, LEVEL 3 ORAN PARK PODIUM  
 351 ORAN PARK DRIVE  
 ORAN PARK, NSW 2570  
 PH: (02) 4632 6500  
 WEB: www.premise.com.au

DESIGNED  
P. SITHIRAJVONGSA  
 CHECKED  
S. HOYNES  
 PROJECT MANAGER  
M. THORNE

SCALE  
0 25 50 75m  
 SCALE 1:1250 (A1)  
**DRAFT**  
 ORIGINAL SHEET SIZE A1

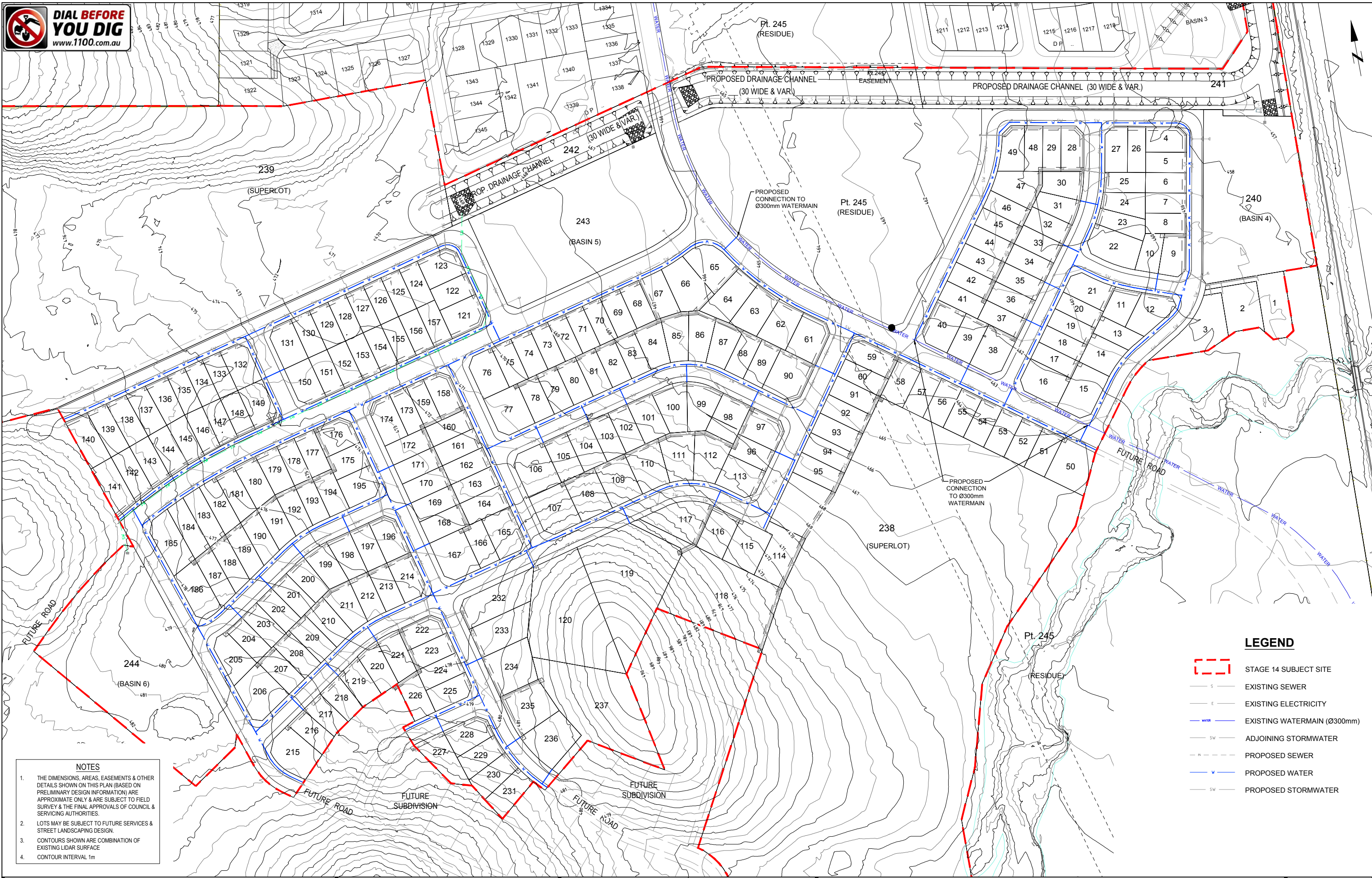
CLIENT  
**CAERLEON MUDGEY PTY LTD**

PROJECT  
**STAGE 14 - DEVELOPMENT APPLICATION**

LOCATION  
**"CAERLEON ESTATE", MUDGEY**

SHEET TITLE  
**PROPOSED SEWER CONCEPT**

JOB CODE <b>319171-31</b>	
SHEET NUMBER <b>DA20</b>	REV <b>B</b>



**LEGEND**

- STAGE 14 SUBJECT SITE
- EXISTING SEWER
- EXISTING ELECTRICITY
- EXISTING WATERMAIN (Ø300mm)
- ADJOINING STORMWATER
- PROPOSED SEWER
- PROPOSED WATER
- PROPOSED STORMWATER

**NOTES**

1. THE DIMENSIONS, AREAS, EASEMENTS & OTHER DETAILS SHOWN ON THIS PLAN (BASED ON PRELIMINARY DESIGN INFORMATION) ARE APPROXIMATE ONLY & ARE SUBJECT TO FIELD SURVEY & THE FINAL APPROVALS OF COUNCIL & SERVICING AUTHORITIES.
2. LOTS MAY BE SUBJECT TO FUTURE SERVICES & STREET LANDSCAPING DESIGN.
3. CONTOURS SHOWN ARE COMBINATION OF EXISTING LIDAR SURFACE
4. CONTOUR INTERVAL 1m

**NOT FOR CONSTRUCTION**

DATE	REV	DESCRIPTION	REVISIONS	PS	MT
15/03/22	B	ISSUED FOR COUNCIL APPROVAL		PS	MT
11/03/22	A	ISSUED FOR REVIEW - PROPOSED SUBDIVISION STAGE 14 - 237 RESIDENTIAL LOTS		PS	MT
				REC	APP

**Premise**  
 ORAN PARK OFFICE  
 SUITE 301, LEVEL 3 ORAN PARK PODIUM  
 351 ORAN PARK DRIVE  
 ORAN PARK, NSW 2570  
 PH: (02) 4632 6500  
 WEB: www.premise.com.au

DESIGNED  
P. SITHIRAJVONGSA  
 CHECKED  
S. HOYNES  
 PROJECT MANAGER  
M. THORNE

SCALE  
0 25 50 75m  
 SCALE 1:1250 (A1)  
**DRAFT**  
 ORIGINAL SHEET SIZE A1

CLIENT <b>CAERLEON MUDGE PTY LTD</b>	JOB CODE <b>319171-31</b>
PROJECT <b>STAGE 14 - DEVELOPMENT APPLICATION</b>	
LOCATION <b>"CAERLEON ESTATE", MUDGE</b>	
SHEET TITLE <b>PROPOSED WATER CONCEPT</b>	
SHEET NUMBER <b>DA21</b>	REV <b>B</b>