



SYMBOL	BOTANIC NAME	COMMON NAME	INSTALLATION SIZE	MATURE SIZE (H x W) m	QTY	EVERGREEN/DECIDUOUS	NATIVE/EXOTIC	SPECIFICATION
STREET TREES								
	<i>Zelkova serrata</i> 'Green Vase'	Japanese Elm	300L	14 x 10	15	D	E	1500mm clear stem
	<i>Fraxinus griffithii</i>	Evergreen Ash	150L	7 x 4	55	E	E	1200mm clear stem
OPEN SPACE TREES								
	<i>Acacia melanoxylon</i>	Blackwood Wattle	100L	8-20 x 8-10	5	E	N	
	<i>Acacia implexa</i>	Lightwood Wattle	100L	5-15 x 4-5	3	E	N	
	<i>Callistemon</i> 'Kings Park Special'	Bottle Brush	100L	4-5 x 4	6	E	N	
	<i>Melaleuca quinquenervia</i>	Broad Leaved Paperbark	100L	8-12 x 4-6	10	E	N	
	<i>Tristaniopsis laurina</i>	Water Gum	100L	8-15 x 4-6	3	E	N	
					TOTAL	97		

- NOTES**
- TREE PLANTING**
FINAL LOCATION OF STREET TREES TO BE DETERMINED ON SITE AS INSTRUCTED BY COUNCIL'S REPRESENTATIVE. IT IS RECOMMENDED THAT TREE POSITIONS ADHERE TO THE FOLLOWING CONSTRAINTS (TO BE CONFIRMED BY COUNCIL):
- WHERE REQUIRED ON SITE DUE TO CONSTRAINTS OUTLINED, SPACING MAY VARY BETWEEN 7 - 10M CENTRES
 - MINIMUM 750MM FROM KERB
 - 3 METRES CLEAR OF POWER POLES AND LIGHT POLES - MINIMUM DISTANCE FROM POLE TO CENTRE OF TREE TRUNK (UNLESS THERE ARE OTHER LIGHT SOURCES TO CONSIDER);
 - 4 METRES EITHER SIDE OF PEDESTRIAN CROSSINGS;
 - 3 METRES CLEAR OF FIRE HYDRANTS;
 - 2 METRES CLEAR OF STORMWATER INLET PIT - DISTANCE FROM NEAREST EDGE OF PIT STRUCTURE;
 - 9 METRES CLEAR OF ANY INTERSECTION, MEASURED FROM THE POINT WHERE AN EXTENSION OF THE BOUNDARY AND KERB LINE MEET;
 - MINIMUM 7 METRES FROM PEDESTRIAN CROSSINGS
 - NO TREES ARE TO BE LOCATED ON THE TRUNCATION OR WITHIN THE TANGENT POINTS OF ANY INTERSECTION.

- LEGEND**
- STAGING**
- STAGE BOUNDARY
 - STAGE 1 WORKS
 - STAGE 2 WORKS (ROAD & PARK)
 - STAGE 3 WORKS
 - STAGE 4 WORKS
- HARDWORKS**
- CONCRETE PATHWAY
 - SOFTFALL SURFACE
- SOFTWORKS**
- REFER TO TREE PLANTING SCHEDULE & DWG 102 FOR PLANT SPECIES PALETTE
- NATURAL TURF
 - PLANTING
 - PROPOSED TREE (REFER TREE PLANTING SCHEDULE)
- FURNISHINGS & PLAY EQUIPMENT**
- REFER TO DWG 102
- OTHER**
- PROPOSED DRAINAGE (REFER ENGINEERS DRAWINGS)
 - EXISTING SEWER
 - EXISTING ELECTRICAL

LANDSCAPE ARCHITECT

NEW EDEN DESIGN
LANDSCAPE ARCHITECTURE

PROJECT TEAM

ENGINEER
PREMISE - DUBBO OFFICE
1/62 WINGEHARRA ST
DUBBO NSW 2830
T: (02) 6887 4500
W: WWW.PREMISE.COM.AU

CLIENT

GULGONG HOLDINGS PTY LIMITED
C/O: DMP5
138 WOORARRA AVENUE
ELANORA HEIGHTS
NSW 2101

REVISION DETAILS

REVISION	DESCRIPTION	DATE
A	ISSUED FOR DA	07.03.22
B	ISSUED FOR DA	07.03.22

SCALES @A1

1:600 1:1200 @ A3

PROJECT

SUBDIVISION PLAN
1 RAILWAY STREET, GULGONG NSW 2852

DRAWING TITLE

LANDSCAPE PLAN
SHEET 1/2

CAD FILE NAME

PROJECT REF. DRAWING NUMBER REVISION

21015 101 B

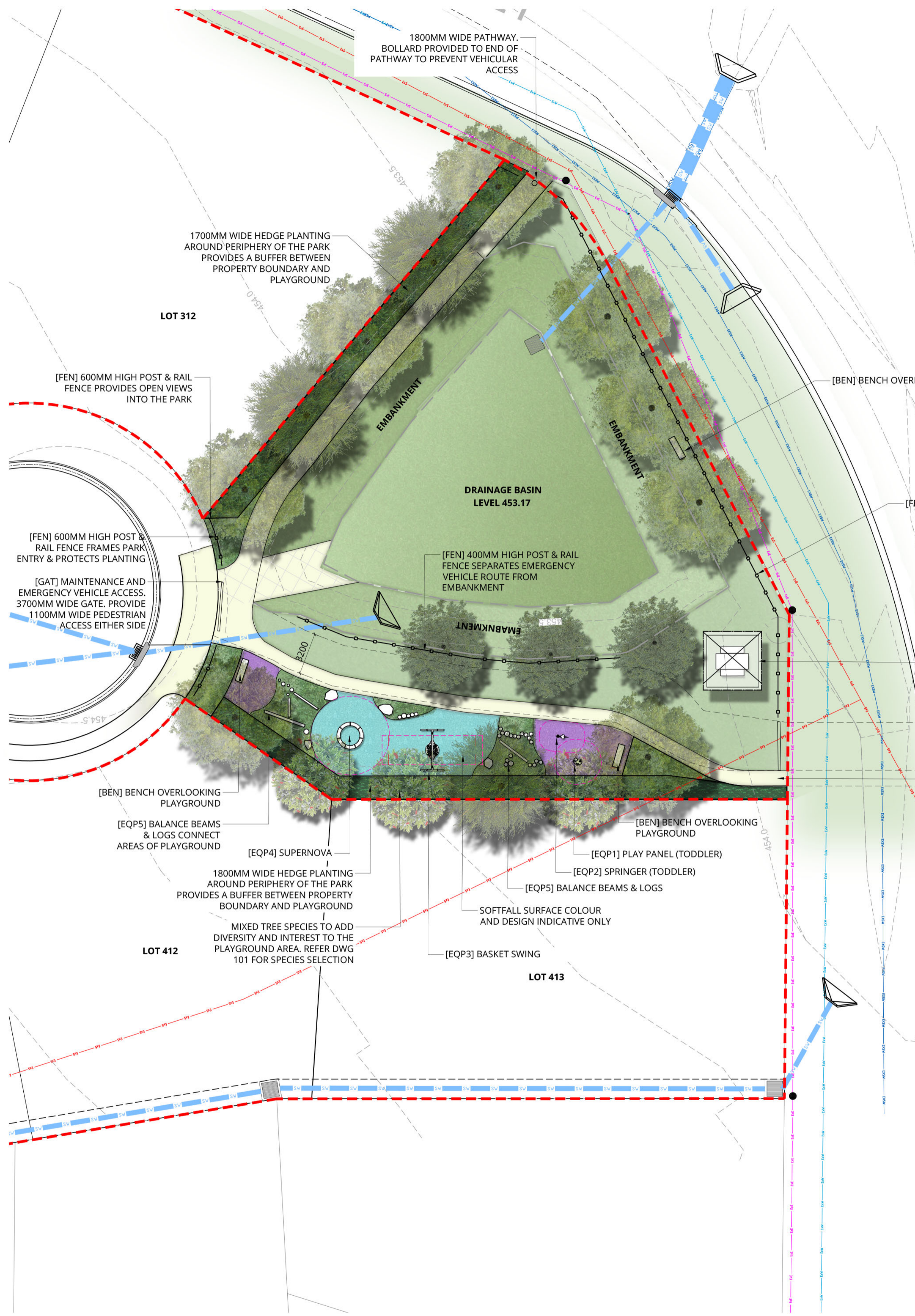
DRAWN CHECKED APPROVED DATE

MG MG GJ 07.03.22

STATUS

ISSUED FOR DA
NOT TO BE USED FOR CONSTRUCTION

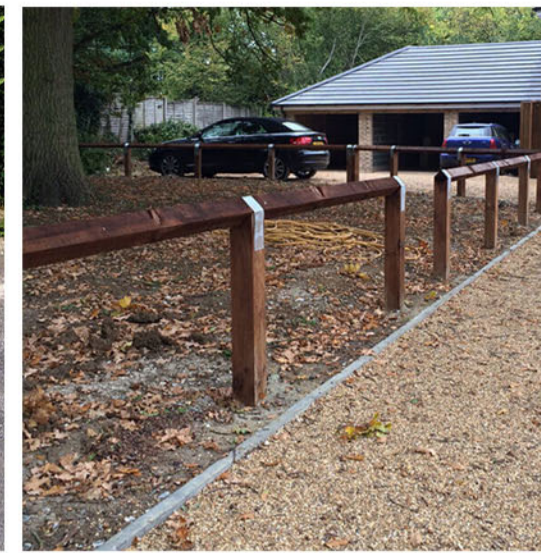
All dimensions to be verified on site prior to commencement of on-site work and/or off-site prefabrication. Figure dimension to be taken in preference to scaled dimensions. This drawing is copyright and remains the property of New Eden Design. Reproduction in whole or part of these drawings without written consent constitutes an infringement of copyright.



FURNISHINGS
PRODUCT & COLOUR SPECIFICATION TBC AT LATER WORK STAGE



[GAT] 3700MM WIDE SWING BARRIER GATE



[FEN] 600/400MM HIGH POST & RAIL FENCING



[SHLT] 4000 x 4000MM PICNIC SHELTER



[PIC] PICNIC BENCH SETTING WITH TIMBER / COMPOSITE BATTENS



[BEN] BENCH WITH TIMBER / COMPOSITE BATTENS

PLAY EQUIPMENT
PRODUCT & COLOUR SPECIFICATION TBC AT LATER WORK STAGE



[EQP1] PLAY PANEL (TODDLER)



[EQP2] SPRINGER (TODDLER)



[EQP3] BASKET SWING



[EQP4] SUPERNOVA

NATURE PLAY ELEMENTS



BALANCE BEAMS



SAWN LOGS



BOULDERS FOR USE AS INFORMAL SEATING / PLAY

INDICATIVE PLANT SPECIES PALETTE

HEDGE



ACMENA SMITHII 'SUBLIME' SUBLIME LILLY PILLY

PLAYGROUND PLANTING

TO BE PLANTED IN DRIFTS TO ACHIEVE A NATURAL AESTHETIC



LOMANDRA LONGIFOLIA 'TANIKA' MATT RUSH



CASUARINA GLAUCA 'COUSIN IT' PROSTRATE SHEOAK



LIRIOPE MUSCARI 'JUST RIGHT' LILY TURF



ANIGOZANTHOS 'YELLOW GEM' KANGAROO PAW



MYOPORUM PARVIFOLIUM CREEPING BOOBIALLA



CARPOBROTUS GLAUCCENS PIG FACE

LANDSCAPE ARCHITECT

NEW EDEN DESIGN
LANDSCAPE ARCHITECTURE

NEW EDEN DESIGN
ABN 76 881 730 101
SUITE 285, 4 YOUNG STREET
NEUTRAL BAY NSW 2089
T +61 4 999 42850
E CONTACT@NEWEDENDESIGN.COM
WWW.NEWEDENDESIGN.COM

PROJECT TEAM

ENGINEER
PREMISE - DUBBO OFFICE
1/62 WINGWARRA ST
DUBBO NSW 2830
T (02) 6887 4500
W: WWW.PREMISE.COM.AU

CLIENT

GULGONG HOLDINGS PTY LIMITED
C/O: DMPS
138 WOORARRA AVENUE
ELANORA HEIGHTS
NSW 2101

REVISION DETAILS

REVISION	DESCRIPTION	DATE
A	ISSUED FOR DA	07.03.22
B	ISSUED FOR DA	07.03.22

SCALES @A1



PROJECT

SUBDIVISION PLAN
1 RAILWAY STREET, GULGONG NSW 2852

DRAWING TITLE

PARK DETAIL PLAN
SHEET 2/2

CAD FILE NAME

PROJECT REF. DRAWING NUMBER REVISION

21015 102 B

DRAWN CHECKED APPROVED DATE

MG MG GJ 07.03.22

STATUS

ISSUED FOR DA
NOT TO BE USED FOR CONSTRUCTION