

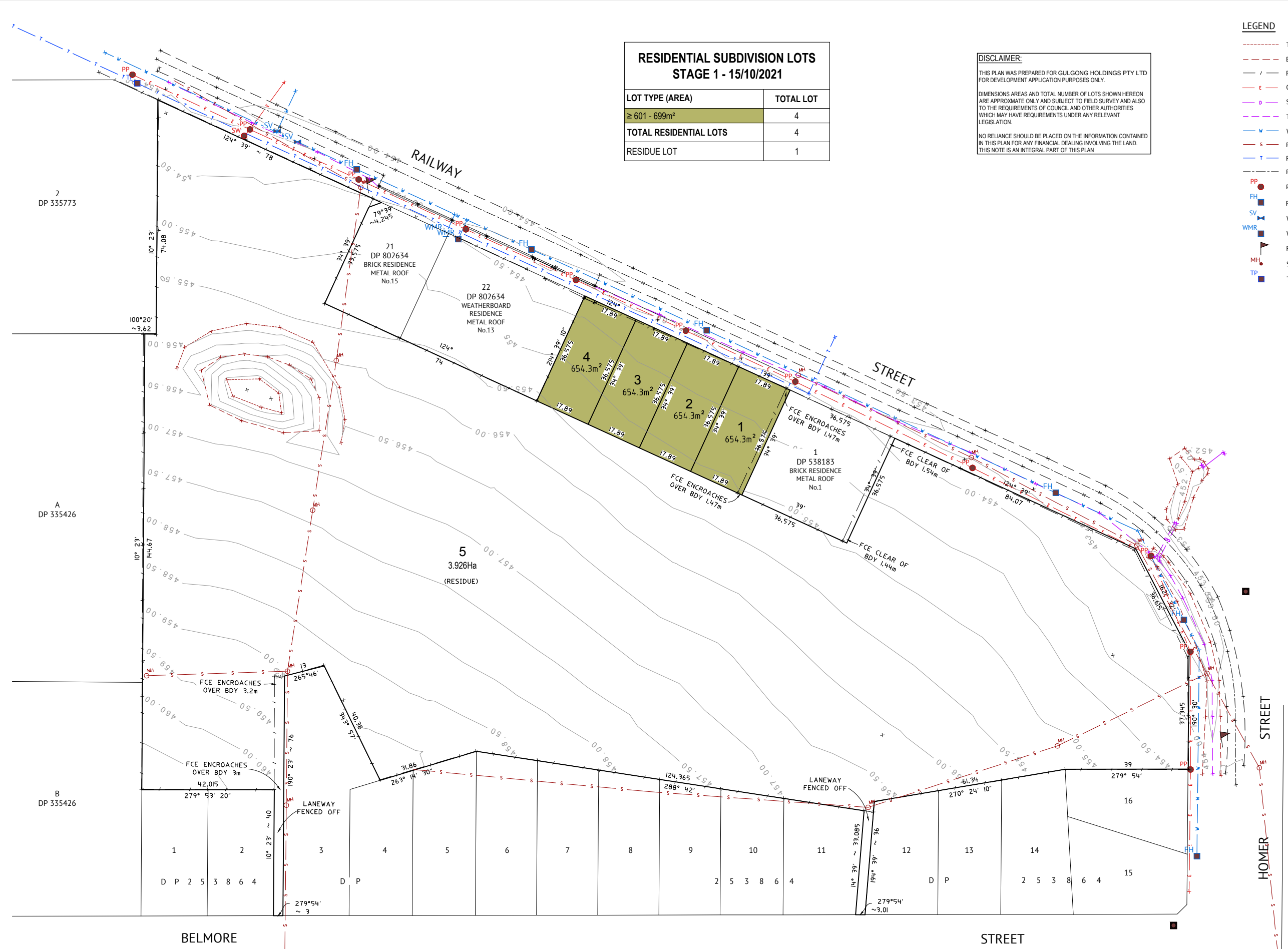
**RESIDENTIAL SUBDIVISION LOTS  
STAGE 1 - 15/10/2021**

LOT TYPE (AREA)	TOTAL LOT
≥ 601 - 699m <sup>2</sup>	4
<b>TOTAL RESIDENTIAL LOTS</b>	<b>4</b>
RESIDUE LOT	1

**DISCLAIMER:**  
THIS PLAN WAS PREPARED FOR GULGONG HOLDINGS PTY LTD FOR DEVELOPMENT APPLICATION PURPOSES ONLY.  
DIMENSIONS AREAS AND TOTAL NUMBER OF LOTS SHOWN HEREON ARE APPROXIMATE ONLY AND SUBJECT TO FIELD SURVEY AND ALSO TO THE REQUIREMENTS OF COUNCIL AND OTHER AUTHORITIES WHICH MAY HAVE REQUIREMENTS UNDER ANY RELEVANT LEGISLATION.  
NO RELIANCE SHOULD BE PLACED ON THE INFORMATION CONTAINED IN THIS PLAN FOR ANY FINANCIAL DEALING INVOLVING THE LAND. THIS NOTE IS AN INTEGRAL PART OF THIS PLAN

**LEGEND**

- TOP OF BANK
- BOTTOM OF BANK
- / - FENCE
- E - OVERHEAD POWERLINES
- S - STORMWATER PIPE
- P - TABLEDRAIN
- W - WATER MAIN
- S - ROAD CENTRELINE
- T - ROAD CENTRELINE
- - - ROAD CENTRELINE
- PP ● POWER POLE
- FH ■ FIRE HYDRANT
- SV ▲ WATER STOP VALVE
- WMR ■ WATER METER
- ▲ ROAD SIGN
- MH ● SEWER MANHOLE
- TP ■ TELSTRA PIT



**ISSUED FOR REVIEW**

DATE	REV	DESCRIPTION	REVISIONS	DATE	REV	DESCRIPTION	REVISIONS
15/10/21	C	ISSUED FOR APPROVAL - BOUNDARIES AMENDED			PS	WRS	
27/09/21	B	ISSUED FOR REVIEW - TOTAL 4 RESIDENTIAL LOTS & RESIDUE LOT			PS	WRS	
16/09/21	A	ISSUED FOR REVIEW - TOTAL 48 LOTS			PS	WRS	

**ORAN PARK OFFICE**  
SUITE 301, LEVEL 3 ORAN PARK PODIUM  
351 ORAN PARK DRIVE  
ORAN PARK, NSW 2570  
PH: (02) 4632 6500  
WEB: www.premise.com.au

DESIGNED  
P. SITHIRAVONGSA  
CHECKED  
W. SAUNDERS  
PROJECT MANAGER  
W. SAUNDERS  
REGISTERED SURVEYOR

SCALE  
SCALE 1:600 (A1)  
0 12 24 36m  
SCALE 1:1200 (A3)  
0 12 24 36m  
ORIGINAL SHEET SIZE A1

CLIENT  
**GULGONG HOLDINGS PTY LTD**  
PROJECT  
**SUBDIVISION OF LOT 2 IN DP 613429**  
LOCATION  
**1 RAILWAY STREET, GULGONG**  
SHEET TITLE  
**PROPOSED SUBDIVISION PLAN - STAGE 1**

JOB CODE  
**322037\_03**  
SHEET NUMBER  
**TP01**  
REV  
**C**