

GLEN WILLOW REGIONAL SPORTS COMPLEX



CONTENTS

Telephone	02 6378 2850
Fax	02 6378 2815
Mayor	Cr Des Kennedy
General Manager	Brad Cam

Total Population	25,086
Council Area	8,752.3km ²
Roads network	2,448km

Source: ABS 2016 Census, ABS 3218.0 Estimated Residential Population

A prosperous and progressive community we proudly call home.

1	The Mudgee Region	3	8	Corporate Functions	17
	Our location	3		Corporate packages	17
	Our people	3		Function venues	17
	Our community	3		Game Day functions	17
	Sports tourism	3		Suppliers – Catering	17
	Things to do	3		Suppliers – Events	17
2	Glen Willow Regional Sports Stadium	4	9	Major Sporting Event Experience	18
	A sporting vision	4		year	18
	Council involvement	4		event	18
	Availability of the facilities	4		crowd	18
	Ground capacity 10,000 people	5		event	18
	Features of Glen Willow	5		crowd	18
3	Glen Willow Regional Sports Complex	6	10	Mudgee Region Annual Events	19
	Site Map	6		Flavours of Mudgee	19
	Level 1 and 2	7		Mudgee Wine and Food Festival	19
	Grandstand Seating Plan	8		Mudgee Small Farm Field Days	19
	Emergency Evacuation Plan	9		Mudgee Running Festival	19
	Field Layout	10		Mudgee Cup	19
	Egress Plan	11	11	Glen Willow – Testimonials	20
4	Media Facilities	12		A-League Football	20
				NRL Matches	20
5	Local Media Involvement and Co-operation	13		Trans Tasman Touch Football Competition	20
	Media and Communications	13		2014 NSW Country Rugby Championships	20
	Promotional partners	13	12	Transport	21
6	Medical facilities	14		By car	21
	Medical room	14		By bus	21
	Australian Sports Anti-Doping Authority	14		By air	21
	Emergency contact details	14	13	Accommodation	22
	Ambulance access	14			
	Local First Aid Providers	14	14	Fees and Charges	23
7	Additional Facilities	15	15	Booking form	23
	Facilities for training and coaching clinics	15			
	Training fields	15			
	Netball courts	15			
	Soccer/Touch Football	16			
	Fitness Centres	16			
	Pools	16			



1 THE MUDGEE REGION

OUR LOCATION

Mudgee is just over a three hour drive from Sydney, central to major cities on the eastern seaboard and major NSW regional centres. It is quick and easy to get here by road and air.

OUR PEOPLE

Over 25,000 people live and work in the towns of Mudgee, Gulgong, Kandos and Rylstone and many smaller rural villages and settlements.

OUR COMMUNITY

We are a real country community with heart, soul and spirit. Locals love the place they call home and are happy to share the natural surroundings with 573,000 visitors to the region each year.

SPORTS TOURISM

Traditionally a destination for food and wine, Mudgee has answered the call for a premium sports offering in regional NSW. Glen Willow has positioned Mudgee as the regional sporting capital outside the cities.

THINGS TO DO

- 40 cellar doors with locally produced wines
- Excellent range of cafés, pubs and restaurants
- Boutique and antique shopping
- Community and farmers markets with outstanding local food products and arts and crafts
- Thriving arts community with world class galleries
- Historical villages and museums
- Magnificent national parks and nature reserves with spectacular scenery
- Natural and indigenous heritage wonders
- Horse-racing, cycling, miniature railway, fishing, canoeing, farm visits, motor-cross (the list is endless)



choose
mudgee
region

For more information on the Mudgee region visit
www.visitmudgeeregion.com.au



“

Glen Willow is among the newest, most sophisticated and best equipped stadium available in regional NSW.”

”

2 GLEN WILLOW REGIONAL SPORTS STADIUM

A SPORTING VISION

Glen Willow is owned by Mid-Western Regional Council and is the region's premier sporting venue.

The facility was completed in February 2012 and has hosted a number of major events including:

- 2019 NRL Telstra Premiership - Round 10: St George Illawarra Dragons v Newcastle Knights
- 2019 SUFC Shute Shield: Sydney Uni v Eastwood
- 2019 Westfund Charity Shield
- 2018 NRL Telstra Premiership - Round 11: St George Illawarra Dragons v Canberra Raiders
- 2018 Westfund Charity Shield
- 2018 Hyundai A-League Premiership Western Sydney Wanderers v Brisbane Roar
- 2017 NSW Waratahs v ACT Brumbies
- 2016 Country v City
- 2014 NSW Country Rugby Championships
- 2013 Round 11 Pirtek Parramatta Eels v Gold Coast

Titans NRL Premiership Match

- 2012 AAMI Country v City Origin match
- 2012 & 2014 Open Trans Tasman Touch Football Test Series

The facility continues to receive outstanding testimonials and rave reviews from sports commentators, spectators, participants and community groups.

COUNCIL INVOLVEMENT

Council has both venue and event staff available to assist in all aspects of preparation and event planning including game day activities.

AVAILABILITY OF THE FACILITIES

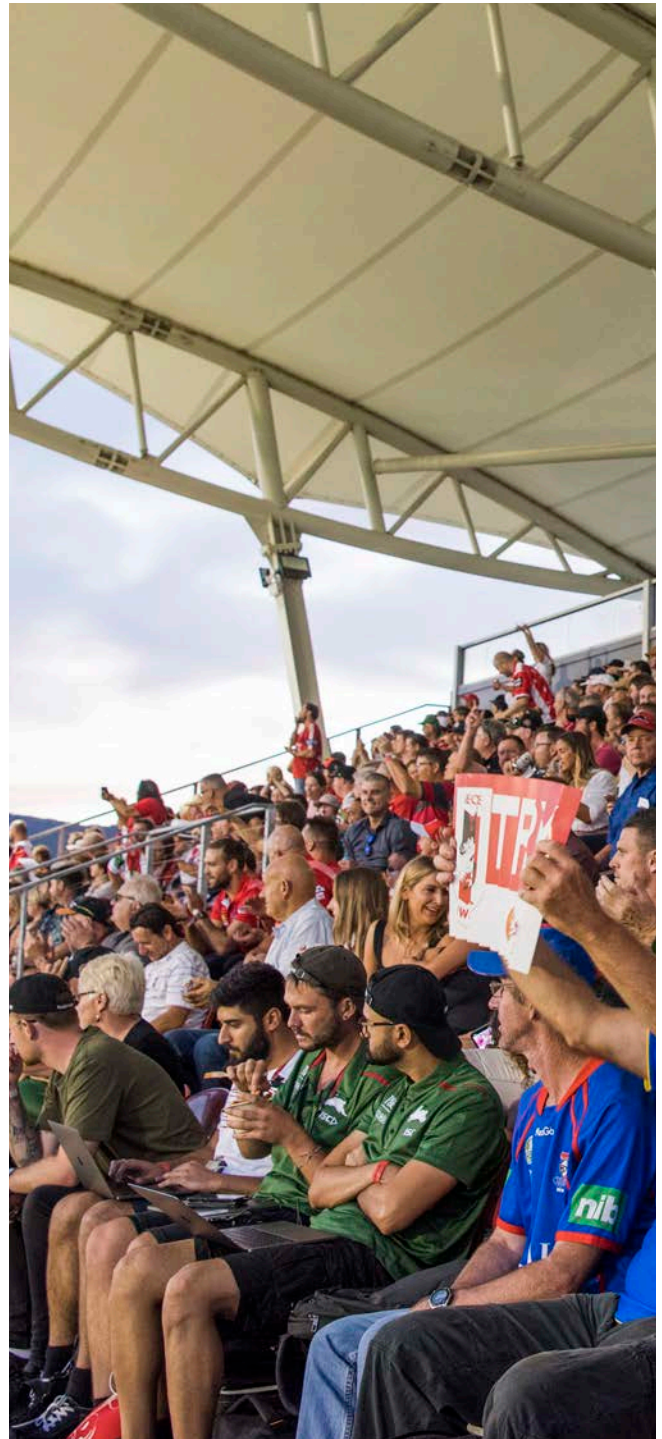
Council will work closely with event organisers to confirm suitable dates for matches and ensure exclusive use of the Glen Willow Regional Sports Complex.

GROUND CAPACITY 10,000 PEOPLE

- 10,000 capacity stadium including 1,000 seat undercover grandstand
- Designated VIP area can be made available in grandstand seating
- Two corporate areas available in grandstand including kitchen and bar
- Raised grass mounds surrounding main field
- Adequate space to erect temporary seating around the perimeter of all fields if required

FEATURES OF GLEN WILLOW

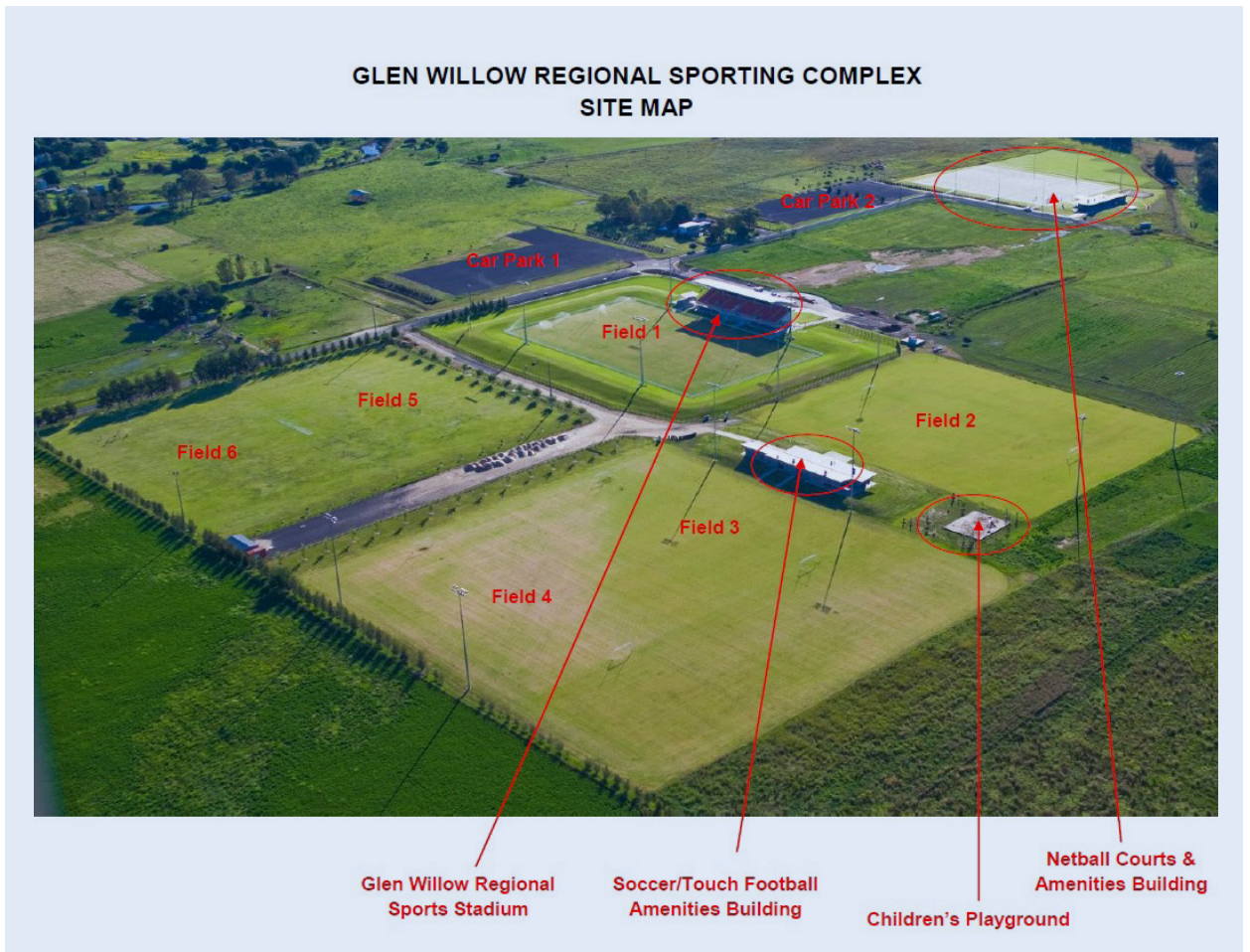
- A first class sporting field and practice/warm-up field
- Professional 500 lux lighting
- Large fixed electronic scoreboard available on main field
- Change room facilities
- Canteen and bar facilities
- Coaches boxes
- Broadcast and media facilities
- Corporate entertainment areas
- Ticket office, ticket windows and turnstile entry
- Office facilities
- Car and bus parking facilities
- Additional multi-disciplinary fields ideal for warm ups, training session and clinics
- BBQ facilities, children's play grounds and green "open" spaces



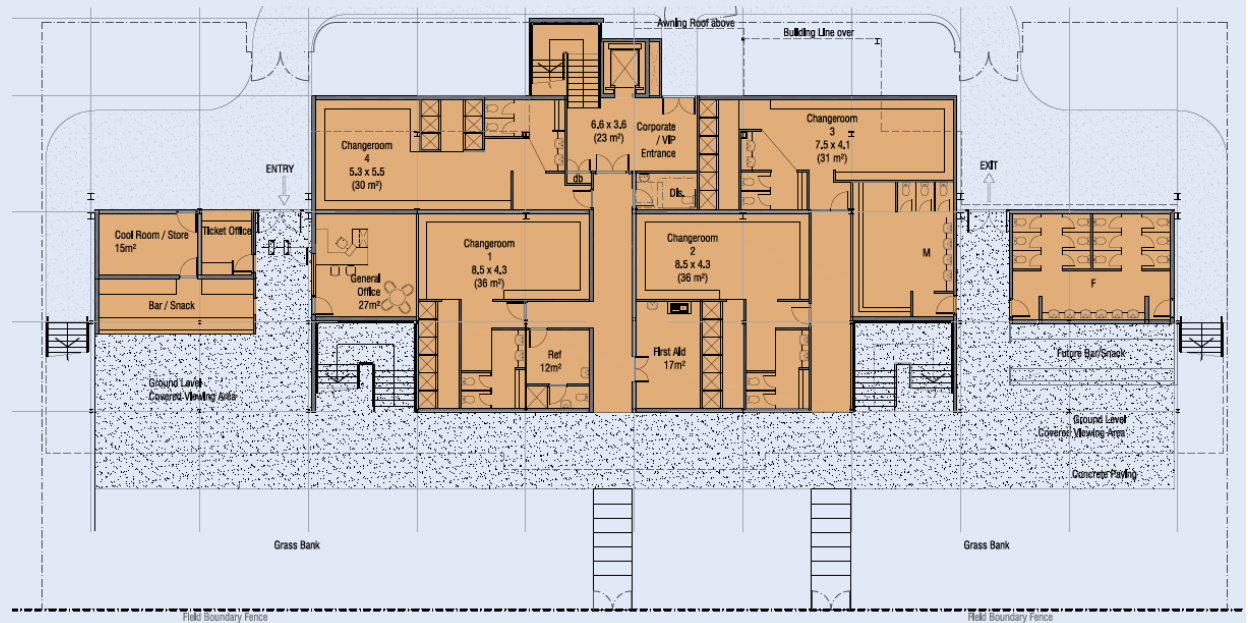


3 GLEN WILLOW REGIONAL SPORTS COMPLEX

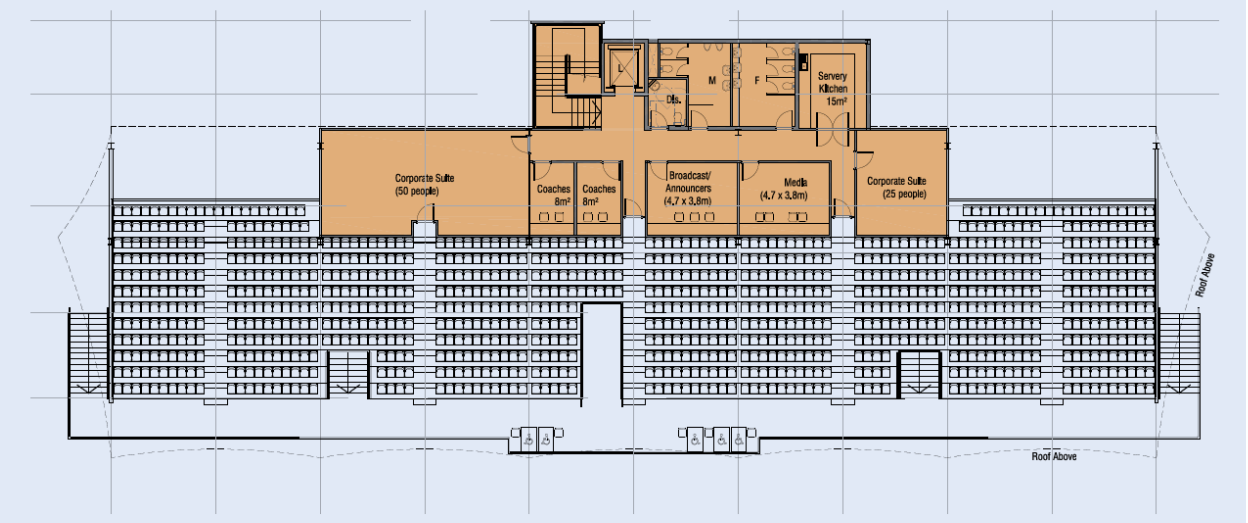
SITE MAP



GLEN WILLOW REGIONAL SPORTS STADIUM GRANDSTAND GROUND LEVEL



GLEN WILLOW REGIONAL SPORTS STADIUM GRANDSTAND LEVEL TWO



Glen Willow Grandstand Seating Map

	AISLE A										AISLE B										AISLE C									
M	1	2	3	4	5	6	7	8	9	10	1	2	3	4	5	6	7	8	9	10	1	2	3	4	5	6	7	8	9	10
L	1	2	3	4	5	6	7	8	9	10	1	2	3	4	5	6	7	8	9	10	1	2	3	4	5	6	7	8	9	10
K	1	2	3	4	5	6	7	8	9	10	1	2	3	4	5	6	7	8	9	10	1	2	3	4	5	6	7	8	9	10
J	1	2	3	4	5	6	7	8	9	10	1	2	3	4	5	6	7	8	9	10	1	2	3	4	5	6	7	8	9	10
I	1	2	3	4	5	6	7	8	9	10	1	2	3	4	5	6	7	8	9	10	1	2	3	4	5	6	7	8	9	10
H	1	2	3	4	5	6	7	8	9	10	1	2	3	4	5	6	7	8	9	10	1	2	3	4	5	6	7	8	9	10
G	1	2	3	4	5	6	7	8	9	10	1	2	3	4	5	6	7	8	9	10	1	2	3	4	5	6	7	8	9	10
F	1	2	3	4	5	6	7	8	9	10	1	2	3	4	5	6	7	8	9	10	1	2	3	4	5	6	7	8	9	10
E	1	2	3	4	5	6	7	8	9	10	1	2	3	4	5	6	7	8	9	10	1	2	3	4	5	6	7	8	9	10
D	1	2	3	4	5	6	7	8	9	10	1	2	3	4	5	6	7	8	9	10	1	2	3	4	5	6	7	8	9	10
C	1	2	3	4	5	6	7	8	9	10	1	2	3	4	5	6	7	8	9	10	1	2	3	4	5	6	7	8	9	10
B	1	2	3	4	5	6	7	8	9	10	1	2	3	4	5	6	7	8	9	10	1	2	3	4	5	6	7	8	9	10
A	1	2	3	4	5	6	7	8	9	10	1	2	3	4	5	6	7	8	9	10	1	2	3	4	5	6	7	8	9	10

Available for public sale

EAN	EAC1	EAC2	EAC3	EAC4
-----	------	------	------	------

Available for public sale

--	--	--	--

Grandstand Seating	1001
Accessible Seating	12 (6 disabled + 6 carer)
TOTAL	1013

	AISLE D										AISLE E										AISLE F																		
1	2	3	4	5	6	7	8	9	10	11	12	13	14	15	16	17	18	19	20	1	2	3	4	5	6	7	8	9	10	11	12	13	14	15	16	17	18	19	20
2	2	3	4	5	6	7	8	9	10	11	12	13	14	15	16	17	18	19	20	1	2	3	4	5	6	7	8	9	10	11	12	13	14	15	16	17	18	19	20
3	2	3	4	5	6	7	8	9	10	11	12	13	14	15	16	17	18	19	20	1	2	3	4	5	6	7	8	9	10	11	12	13	14	15	16	17	18	19	20
4	2	3	4	5	6	7	8	9	10	11	12	13	14	15	16	17	18	19	20	1	2	3	4	5	6	7	8	9	10	11	12	13	14	15	16	17	18	19	20
5	2	3	4	5	6	7	8	9	10	11	12	13	14	15	16	17	18	19	20	1	2	3	4	5	6	7	8	9	10	11	12	13	14	15	16	17	18	19	20
6	2	3	4	5	6	7	8	9	10	11	12	13	14	15	16	17	18	19	20	1	2	3	4	5	6	7	8	9	10	11	12	13	14	15	16	17	18	19	20
7	2	3	4	5	6	7	8	9	10	11	12	13	14	15	16	17	18	19	20	1	2	3	4	5	6	7	8	9	10	11	12	13	14	15	16	17	18	19	20
8	2	3	4	5	6	7	8	9	10	11	12	13	14	15	16	17	18	19	20	1	2	3	4	5	6	7	8	9	10	11	12	13	14	15	16	17	18	19	20
9	2	3	4	5	6	7	8	9	10	11	12	13	14	15	16	17	18	19	20	1	2	3	4	5	6	7	8	9	10	11	12	13	14	15	16	17	18	19	20
10	2	3	4	5	6	7	8	9	10	11	12	13	14	15	16	17	18	19	20	1	2	3	4	5	6	7	8	9	10	11	12	13	14	15	16	17	18	19	20
11	2	3	4	5	6	7	8	9	10	11	12	13	14	15	16	17	18	19	20	1	2	3	4	5	6	7	8	9	10	11	12	13	14	15	16	17	18	19	20
12	2	3	4	5	6	7	8	9	10	11	12	13	14	15	16	17	18	19	20	1	2	3	4	5	6	7	8	9	10	11	12	13	14	15	16	17	18	19	20
13	2	3	4	5	6	7	8	9	10	11	12	13	14	15	16	17	18	19	20	1	2	3	4	5	6	7	8	9	10	11	12	13	14	15	16	17	18	19	20
14	2	3	4	5	6	7	8	9	10	11	12	13	14	15	16	17	18	19	20	1	2	3	4	5	6	7	8	9	10	11	12	13	14	15	16	17	18	19	20
15	2	3	4	5	6	7	8	9	10	11	12	13	14	15	16	17	18	19	20	1	2	3	4	5	6	7	8	9	10	11	12	13	14	15	16	17	18	19	20
16	2	3	4	5	6	7	8	9	10	11	12	13	14	15	16	17	18	19	20	1	2	3	4	5	6	7	8	9	10	11	12	13	14	15	16	17	18	19	20
17	2	3	4	5	6	7	8	9	10	11	12	13	14	15	16	17	18	19	20	1	2	3	4	5	6	7	8	9	10	11	12	13	14	15	16	17	18	19	20
18	2	3	4	5	6	7	8	9	10	11	12	13	14	15	16	17	18	19	20	1	2	3	4	5	6	7	8	9	10	11	12	13	14	15	16	17	18	19	20
19	2	3	4	5	6	7	8	9	10	11	12	13	14	15	16	17	18	19	20	1	2	3	4	5	6	7	8	9	10	11	12	13	14	15	16	17	18	19	20
20	2	3	4	5	6	7	8	9	10	11	12	13	14	15	16	17	18	19	20	1	2	3	4	5	6	7	8	9	10	11	12	13	14	15	16	17	18	19	20

Available for public sale

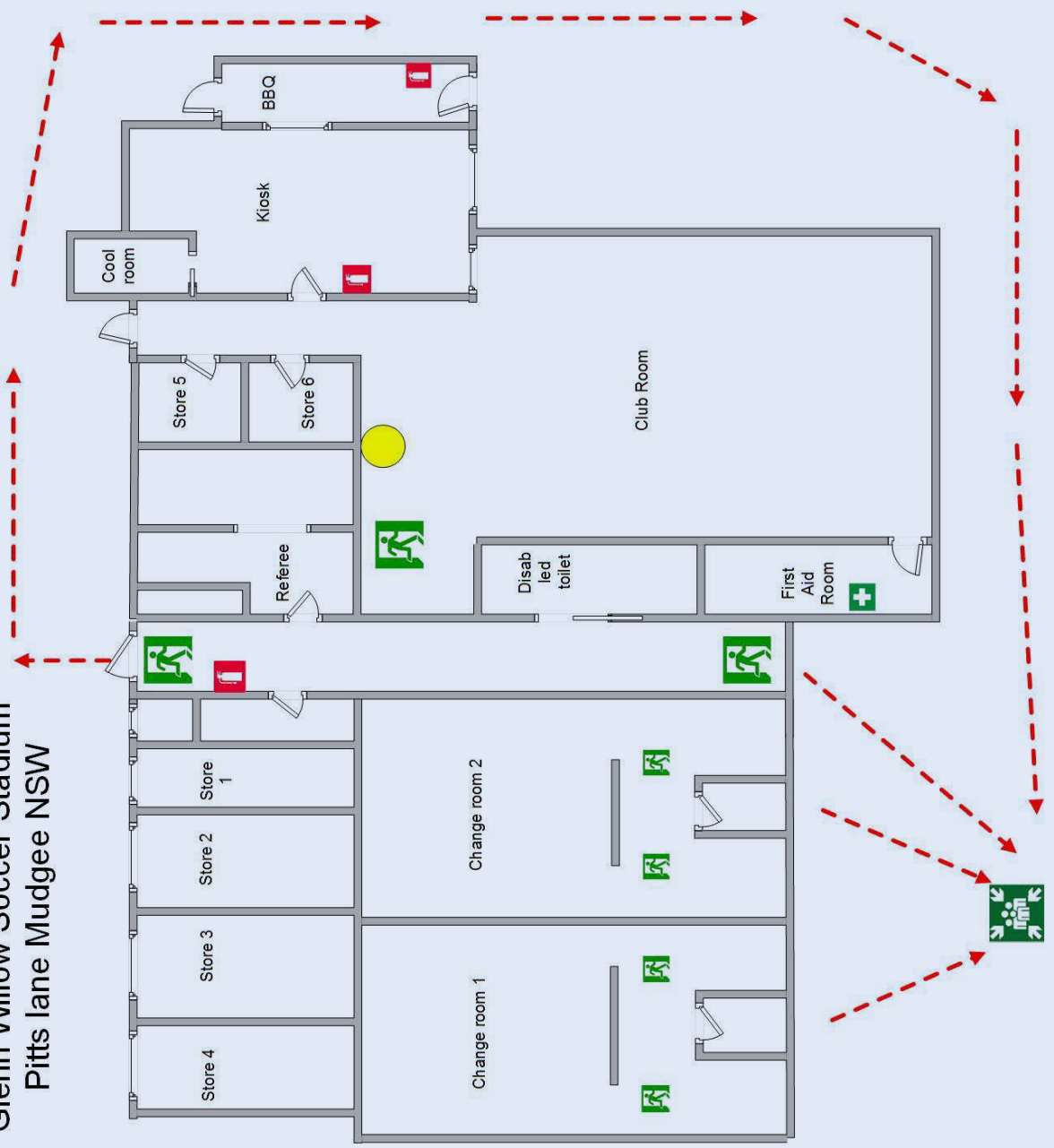
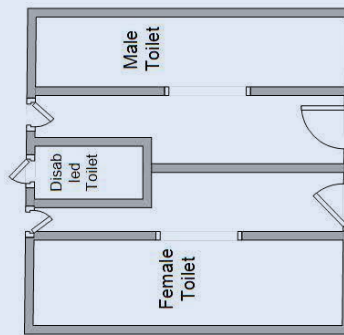
EAN	EAC1	EAC2	EAC3	EAC4
-----	------	------	------	------

NOTE: NO ROW I

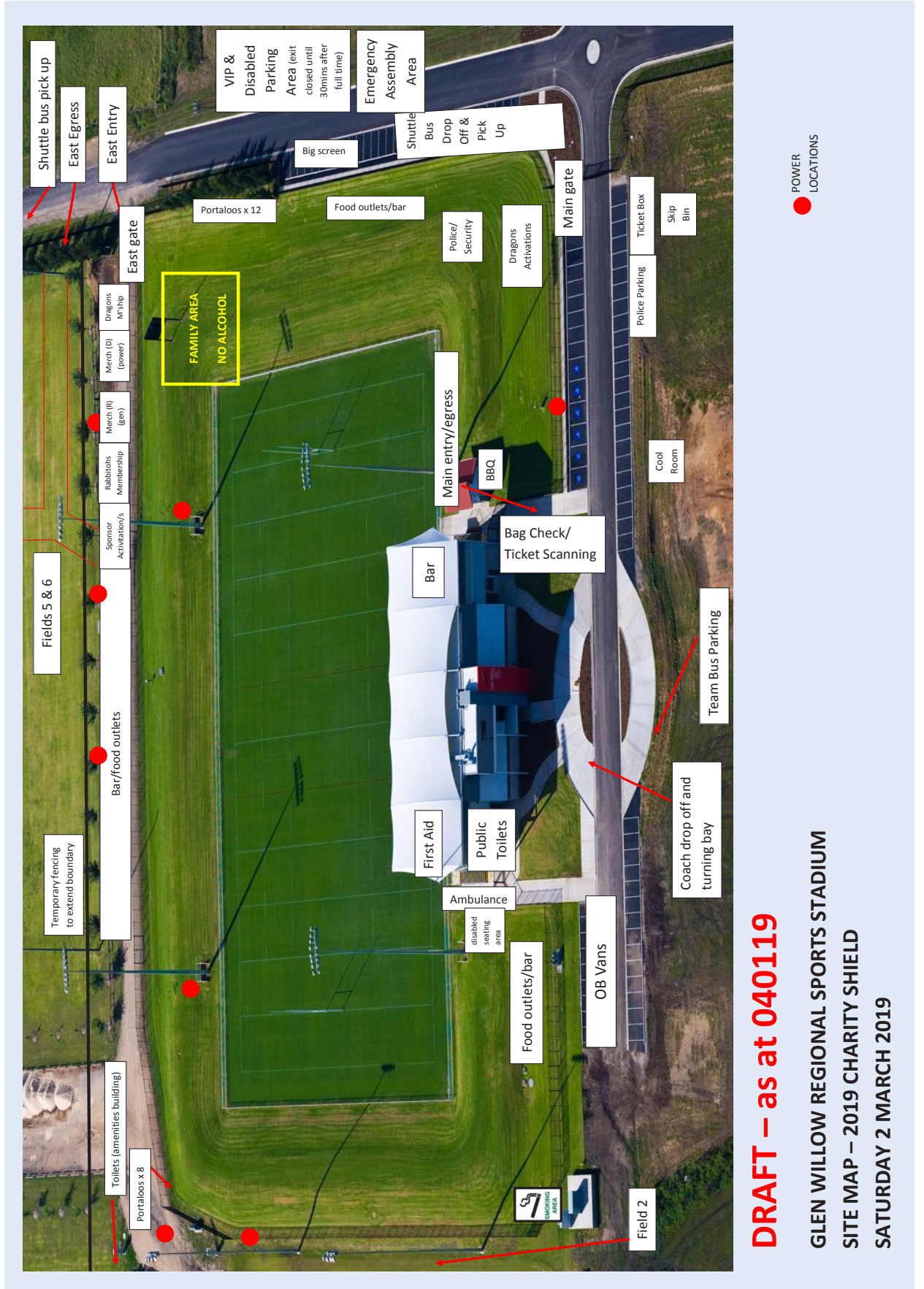
Glenn Willow Soccer Stadium Pitts lane Mudgee NSW

EMERGENCY EVACUATION PROCEDURES

1. When an emergency arises, or you are instructed to evacuate, leave the building by the nearest and safest **EMERGENCY EXIT**
2. Move quietly and calmly to the nearest outside **MUSTER POINT**
3. Remain in your marshalling area until advised to leave that area or return to work by Emergency personnel or Council Manager



FIELD LAYOUT



**Glen Willow Major Events Traffic Management – EGRESS
DRAFT AS AT 11/04/18**





4 MEDIA FACILITIES

Mid-Western Regional Council's media and communications team is available to assist with local knowledge and contacts, and has demonstrated the successful promotion of previous major events at Glen Willow.

Previous events have seen the Channel 9, Fox Sports and ABC broadcast and production teams use the facilities seamlessly.

The main grandstand at Glen Willow includes excellent facilities for filming games held on the main playing field.

Facilities available include:

- Media and broadcast rooms located in main grandstand
- Centrally located Announcers Box with full view of main playing fields
- PA system (including siren) installed in the announcers box covers all fields
- Adequate open space for production and outside broadcast
- Temporary structures may be erected for the duration of an event if filming is required on additional fields





5 LOCAL MEDIA INVOLVEMENT AND CO-OPERATION

Mid-Western Regional Council has strong connections with local media and a proven record of successful co-operation to promote and supply media coverage and facilitate public relations opportunities for events.

MEDIA AND COMMUNICATIONS

Council's media and communications team has a wealth of local knowledge and contacts, and can work closely with event organisers to ensure your event is a success.

Newspapers

- Mudgee Guardian
- The Land Newspaper
- Discovery magazine
- Central Western magazine
- Mudgee Mudmap

Radio

- 2MG Radio
- Real FM
- ABC Western Plains

Television

- Win Television
- Prime 7 Television
- Nine Fox Sports

MWRC Community News

A Community Newsletter produced by Mid-Western Regional Council.

Online and Social Media

- Mid-Western Regional Council website
- Facebook
- Twitter
- Instagram

Promotional Signage

Street Banners are available for use in the Mudgee town centre. Council's events team can work with you to organise this.

PROMOTIONAL PARTNERS

Council's media and communications team is available to assist with local knowledge and contacts, and has demonstrated successful promotion of previous events.

Potential Event and Promotional Partners include:

- Mudgee Regional Tourism Inc.
- Mudgee Guardian
- Mudgee Fine Foods Group
- Mudgee Chamber of Commerce
- Mudgee Wine and Grape Growers Association
- NSW Country Rugby League
- Group 10 Rugby League
- Mudgee Dragons Rugby League Club Inc.
- Mudgee Gulgong Wolves Football Club
- Mudgee Wombats Rugby Union Club
- Mudgee Touch Football Association



6 MEDICAL FACILITIES

MEDICAL ROOM

- Permanent first aid room in main grandstand and amenities building to treat injured players
- AEDs x 2 (main stadium and netball)

AUSTRALIAN SPORTS ANTI-DOPING AUTHORITY

- Ability to create separate area for Australian Sports Anti-Doping Authority testing

EMERGENCY CONTACT DETAILS

- Mudgee Police Station – **6372 8599**
- Mudgee Ambulance Service – **1300 360 455**
- Mudgee Hospital – **6372 6222**
- Mudgee Medical Centre – **6372 1333**
- Southside Medical Centre Mudgee – **6372 4355**

AMBULANCE ACCESS

- Ambulance access directly onto field of play available via gates at northern end of grandstand

LOCAL FIRST AID PROVIDERS

- St John Ambulance – **1300 360 455**
- NSW First Aid – **6372 3888**
1/5 Industrial Avenue, Mudgee (Karl Fletcher)



7 ADDITIONAL FACILITIES

FACILITIES FOR TRAINING AND COACHING CLINICS

Mudgee has a number of training and coaching facilities that can be made available to teams in the preparation and lead up to game day.

TRAINING FIELDS

Venue	No. fields	Lighting
Glen Willow	6*	on all fields
Jubilee Park	1	Yes
Cahill Park	1	Yes
Walkers Oval	1	No
Victoria Park	1	Yes

* 2 competition grade

NETBALL COURTS

The \$2 million netball complex has 20 courts and amenities:

- Courts 1-4 are surfaced with cushioned acrylic plexicushion material, bringing it up to professional standards

- Courts 5-8 are coated with durable acrylic/latex plexipave material, developed to the unique requirements of netball
- Courts 9-12 have painted asphalt surfaces
- There are an additional 8 grassed courts
- Courts 1 – 8 have flood lights for night competition and training

Facilities include:

- Control room
- First Aid room
- Change room
- Canteen
- Club room
- Public toilets
- Playground

Netball is Mudgee's biggest participation sport, and Council hopes to eventually double the number of sealed courts to provide the complex with the facilities needed to host a State carnival.

SOCCKER/TOUCH FOOTBALL

Soccer/Touch Football The Glen Willow sporting complex features multi-use fields which are widely utilised by clubs and school groups and is also home to our local Football (Soccer) Club the Mudgee-Gulgong Wolves and the Mudgee Mudcrabs, our local Touch Football Club.

Facilities include:

- 4 full size fields with flood lights for night time play
- Club house and canteen facilities
- Change rooms
- First Aid room
- Public toilets
- Kitchen
- Storage facilities
- Playground facilities
- BBQ facilities

FITNESS CENTRES

All fully equipped local fitness centres are open to negotiation for exclusive use or alternatively , publicity opportunities.

- **Country Fit** – 36-42 Short Street, Mudgee
6372 3955
- **PCYC** –50 Market Street, Mudgee
6372 1367
- **Anytime Fitness** – 96b Mortimer Street, Mudgee
6372 6387
- **F45** – Shop 1, 102 Church Street, Mudgee
0402 390 523
- **Funk Fitness** – 12 Industrial Avenue, Mudgee
0417 804 040
- **Stride Health** – 98 Market Street, Mudgee
6372 6907

POOLS

- **Mudgee Swimming Pool** – 2 Short Street, Mudgee |
0429 301 484
- **PCYC** – 50 Market Street, Mudgee
6372 1367





8 CORPORATE FUNCTIONS

CORPORATE PACKAGES

From golf days to race meetings and winery tours there are many opportunities to entertain your corporate partners.

Mudgee boasts one of the most celebrated race clubs in Australia and a picturesque racecourse overlooking Glen Willow and vineyards, a lush 18-hole golf course and some of the best locally produced and marketed wine and artisan produce in NSW.

FUNCTION VENUES

The Region has a variety of function venues and suppliers suitable to host premium team dinners, sportsman's dinners and other corporate functions.

These venues are capable of catering for all tastes and requirements with the ability to host small groups (10-20 people) to very large events (1,000 people).

For more information on function venues visit:
www.visitmudgeeregion.com.au

GAME DAY FUNCTIONS

Corporate hospitality options are available at Glen Willow with the option to erect marquees within the facility, providing catering, VIP options and unique offerings for your guests.

SUPPLIERS – CATERING

- **Dad's Deli** – 6372 7450
- **Mudgee Bakery** – 6372 3986
- **Mudgee Corner Store** – 6372 1441
- **Milnes of Mudgee** (milnesofmudgee.com.au)
- **Mudgee Catering Co** – 0427 791 059
- **Mudgee Made** – 6372 9109
- **Outside the Square** – 6372 4260

SUPPLIERS – EVENTS

- **Domayne Events** – 0428 679 358



“

As well as regular local sports competitions, Glen Willow has successfully hosted a number of major regional sporting events.”

”

9 MAJOR SPORTING EVENT EXPERIENCE

YEAR	EVENT	CROWD
2019	2019 SUFC Shute Shield: Sydney Uni v Eastwood	2,900
2019	Westfund Charity Shield	9,133
2019	NRL Telstra Premiership Round 10: Dragons V Knights	9,267
2018	Westfund Charity Shield	9,133
2018	NRL Telstra Premiership Round 11: Dragons V Raiders	8,962
2018	A-League: Western Sydney Wanderers V Brisbane Roar	5,067
2017	Waratahs V Brumbies Rugby Union	6,375
2017	NRL Country V City Origin	8,322
2013	NRL Premiership Match Round 11: Eels V Titans	9,132
2012	NRL AAMI Country V City Origin	8,621

Other sporting events held at Glen Willow include:

EVENT	CROWD
Under 12 NSW Junior Soccer Championships	1,000
Hornets Touch Championships	1,000
Final 8 NSW High School Touch Championships	600
Mid-Western Region Schools Touch Gala Day	500
Grassroots Rugby Festival	600
Western NSW Mariners	160



“

The Mudgee region hosts a number of events and festivals annually, which draw large crowds of locals and tourists.

”

10 MUDGEE REGION ANNUAL EVENTS

FLAVOURS OF MUDGEE

For one evening every September the Mudgee CBD overflows with flavours of the Mudgee region for the feature event of the Mudgee Wine and Food Festival. Organised by Mid-Western Regional Council, visitors enjoy dinner in the street and taste local wine, food and produce in a festival atmosphere with the famous clock tower and Market Street as the backdrop.

MUDGEE WINE AND FOOD FESTIVAL

One of the most anticipated events on the Mudgee events calendar is the annual Mudgee Wine and Food Festival. Held during September the region comes alive with celebrations showcasing the regions local wine and food industry.

The event is a major draw card for tourism with visitors travelling from across New South Wales and interstate.

MUDGEE SMALL FARM FIELD DAYS

For 36 years Mudgee has been home to the Mudgee Small Farm Field days with the event growing in strength each year. The event showcases an array of industries and attracts visitors from all over the state. The Mudgee Small Farm Field Days celebrates the essence of country living.

MUDGEE RUNNING FESTIVAL

Well known as a sporting region the Mudgee running festival organised by the Mudgee Triathlon Club attracts athletes from all over the state to compete in what is said to be one of the most picturesque marathons in Australia.

MUDGEE CUP

The feature event held at Mudgee Racecourse is undoubtedly the Mudgee Cup hosted in early December each year. The Races attract tourists from across the region and is a popular social event for Sydney-siders looking for a weekend of fun in the country.



11 GLEN WILLOW – TESTIMONIALS

A-LEAGUE FOOTBALL

"I haven't seen a pitch like this in Australia, since I have been here. It's a credit to Mudgee. I didn't expect it. It was great to play on and that's probably why you saw such good football being played."

John Aloisi – Brisbane Road Coach

NRL MATCHES

"I would like to commend Mid-Western Regional Council on showing the initiative to bring a NRL Competition game to the town. These games bring the feel of City footy to the bush, and allow Country people the ability to watch their heroes live. Not only is it beneficial for Rugby League in the area but the influx of supporters to the town of Mudgee and surrounds is great for tourism and local business, allowing Mid-Western Regional Council to show off the fantastic facility they have."

Terry Quinn – CEO, Country Rugby League

"The week was Mudgee's time to shine, and it did so brilliantly. Take a bow Mudgee - your warm country hospitality and unbridled enthusiasm will long be remembered."

Andrew Gee MP – Member for Orange

TRANS TASMAN TOUCH FOOTBALL COMPETITION

"Touch Football Australia is thrilled with the result (of the 2012 Open Trans Tasman Test Series) and Mudgee has

certainly set the benchmark on community engagement.... Once again thank you, Touch Football Australia looks forward to a bright future for the sport of Touch Football in the Mudgee community."

Colm Maguire – CEO, Touch Football Australia

2014 NSW COUNTRY RUGBY CHAMPIONSHIPS

"On behalf of New South Wales Country Rugby Union I would like to congratulate you and the members of the Mudgee Rugby Club on the staging of the 2014 NRMA NSW Country Rugby Union Championships.... you have set an unbelievable level of excellence in hosting the event."

The facilities at the Glen Willow Regional Sports Stadium are second to none of any sporting facility in Regional and Rural New South Wales, and the Mid Western Regional Council are to be congratulated on foresight and initiative to construct such a wonderful facility."

Terry Woodward

Executive Officer, NSW Country Rugby Union

"The Glen Willow Stadium facilities are truly impressive and are a wonderful community facility."

The organisation, hospitality and hard work put in by the volunteers from your club also created an event which I am sure will be talked about in glowing terms for a long time."

Kim Rickards

President, Central West Rugby Union



12 TRANSPORT

BY CAR

From Sydney

Approximately 3.5 hours via the Great Western Highway (through the Blue Mountains) or the Bells Line of Road (through Windsor/Richmond).

From Newcastle

Approximately 4 hours via the Bylong Valley Way (through Bylong) or the Golden Highway (through Merriwa).

From Canberra

Approximately 5 hours via Cowra/Wellington or Cowra/Bathurst .

BY BUS

The Mudgee Region has a number of bus companies that are available for private charter, or for game day shuttle services

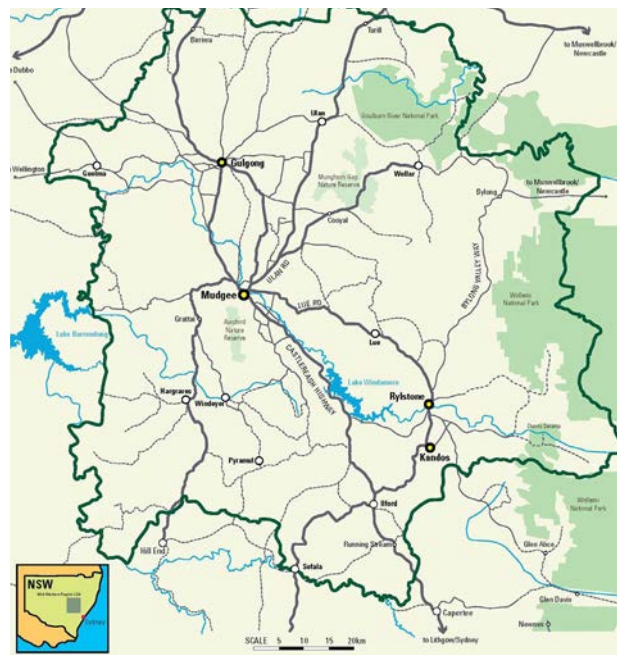
- **East End Buses**
0488 741 079
- **Eggtranz**
6373 4985
- **Ogden's Coaches**
6372 2489

BY AIR

FlyPelican operates between Mudgee and Sydney with a short flight time of approximately 40 minutes. They are also available for private charter services.

Mudgee Airport is located approximately 5km from town.

- **FlyPelican**
02 4965 0111





13 ACCOMMODATION

The Mudgee region has a wide range of accommodation options available to cater for different accommodation preferences and budgets. The total number of beds in existing/permanent accommodation facilities across the region is over 3,200.

For more information on accommodation visit:

www.visitmudgeeregion.com.au

6372 1020

CEO – Cara George



DESCRIPTION	NUMBER OF ROOMS	MAXIMUM CAPACITY
Bed and breakfast option	122	262
Boutique hotel	25	52
Caravan park	166	528
Dormitory style	3	120
Hotels	74	160
Motels/Motor Inn	416	1,251
Self contained	268	715
Serviced apartments	46	158
Total	1,120	3,246



14 FEES AND CHARGES

Please refer to Council's fees and charges document on its website:

http://www.midwestern.nsw.gov.au/council/Rates_fees_payments/

15 BOOKING FORM

Please refer to Council's casual application form and conditions of hire on its website:

<http://www.midwestern.nsw.gov.au/council/council-documents/Forms2/glen-willow-casual-booking-form/>

www.midwestern.nsw.gov.au

⋮ 86 Market Street MUDGEE
⋮ 109 Herbert Street GULGONG
⋮ 77 Louee Street RYLSTONE

⋮ Ph: 1300 765 002 or (02) 6378 2850
⋮ Fax: (02) 6378 2815
⋮ email: council@midwestern.nsw.gov.au